



# Ridgid R82005 Housing Assembly Replacement

This is a sequence guide to changing out the outer case cover of the Ridgid R82005 drill.

Written By: Alex Cominos



## INTRODUCTION

A damaged housing assembly will impede the users ability to properly insert the battery and undermines the drills durability in harsh working environments. Switching out the drill's housing assembly requires a Hex 2.0 Screwdriver to remove the seven M3 X 14mm screws.



### TOOLS:

- [54 Bit Driver Kit](#) (1)  
*2mm Hex Screwdriver*
- [iFixit Opening Tools](#) (1)



### PARTS:

- [Ridgid Housing Assembly R82005](#) (1)

## Step 1 — Housing Assembly



- Eject the battery from the drill.
- Unscrew the seven M3x15.3mm screws, with the 2mm hex screwdriver bit, that secures the Housing Assembly.

## Step 2



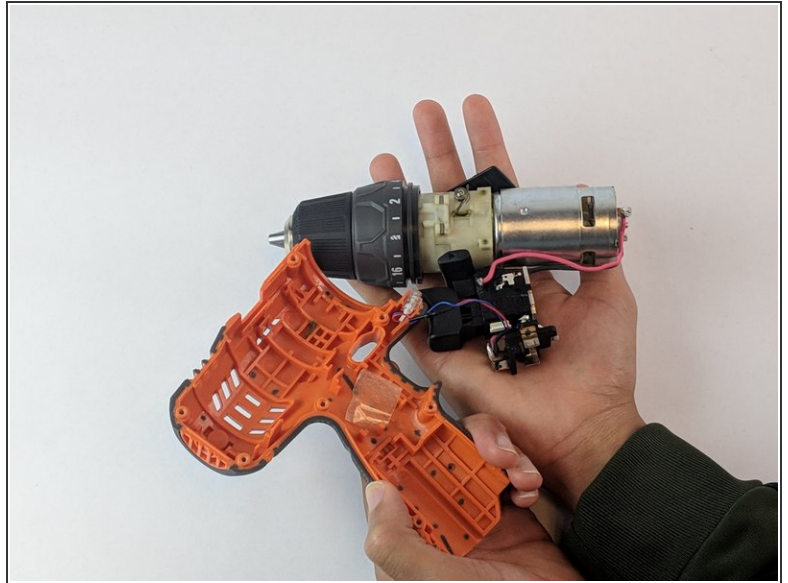
- Push the metallic Housing Connecting clip out with flat side of the plastic opening tool.
- ⓘ Eject battery before attempting this step.

## Step 3



- Remove the top half of the Housing Assembly.

## Step 4



- Grasp carefully the top and bottom of drill components.
- ⚠ LED light needs to be manually removed.
- Lift and transfer, as a whole, the drill components from the old housing assembly to the new housing.
- ⚠ Make sure all drill components fit properly in the grooves of new Housing Assembly.

To reassemble your device, follow these instructions in reverse order. Also reinsert the battery to make sure the drill has power.