



Ridgid R82005 LED Light Replacement

This is a sequence guide to replacing the LED light in your Ridgid R82005 drill.

Written By: Andrew McPherson





TOOLS:

- [54 Bit Driver Kit](#) (1)
2mm Hex Screwdriver
- [iFixit Opening Tools](#) (1)
- [Tweezers](#) (1)

Step 1 — Housing Assembly



- Eject the battery from the drill.
- Unscrew the seven M3x15.3mm screws, with the 2mm hex screwdriver bit, that secures the Housing Assembly.

Step 2



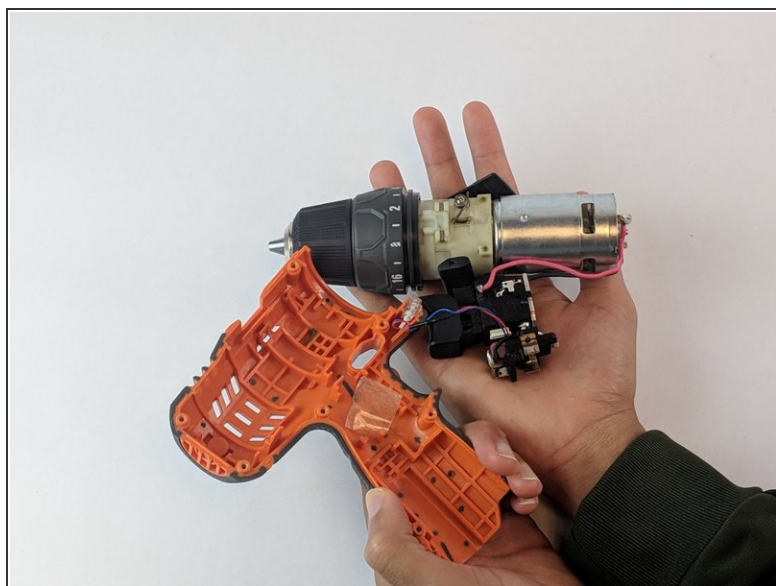
- Push the metallic Housing Connecting clip out with flat side of the plastic opening tool.
- ⓘ Eject battery before attempting this step.

Step 3



- Remove the top half of the Housing Assembly.

Step 4



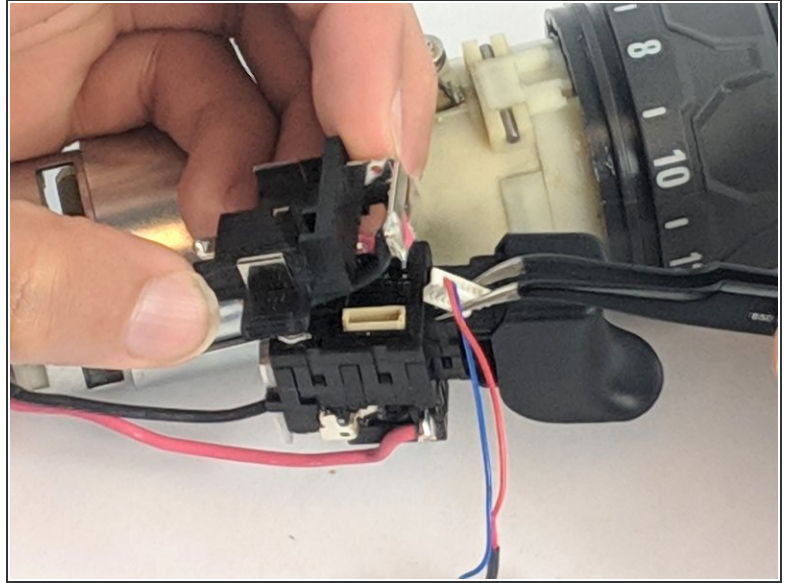
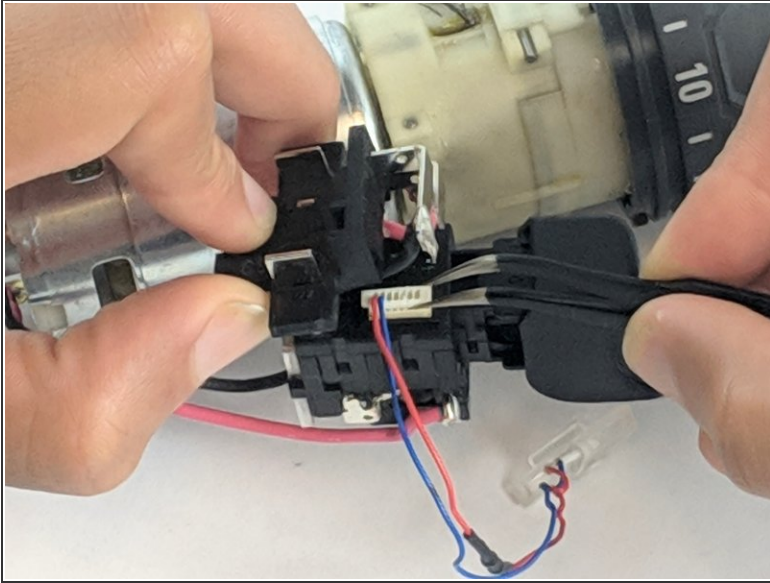
- Grasp carefully the top and bottom of drill components.

⚠ LED light needs to be manually removed.

- Lift and transfer, as a whole, the drill components from the old housing assembly to the new housing.

⚠ Make sure all drill components fit properly in the grooves of new Housing Assembly.

Step 5 — LED Light



- Unplug the LED connector gently.

To reassemble your device, follow these instructions in reverse order.