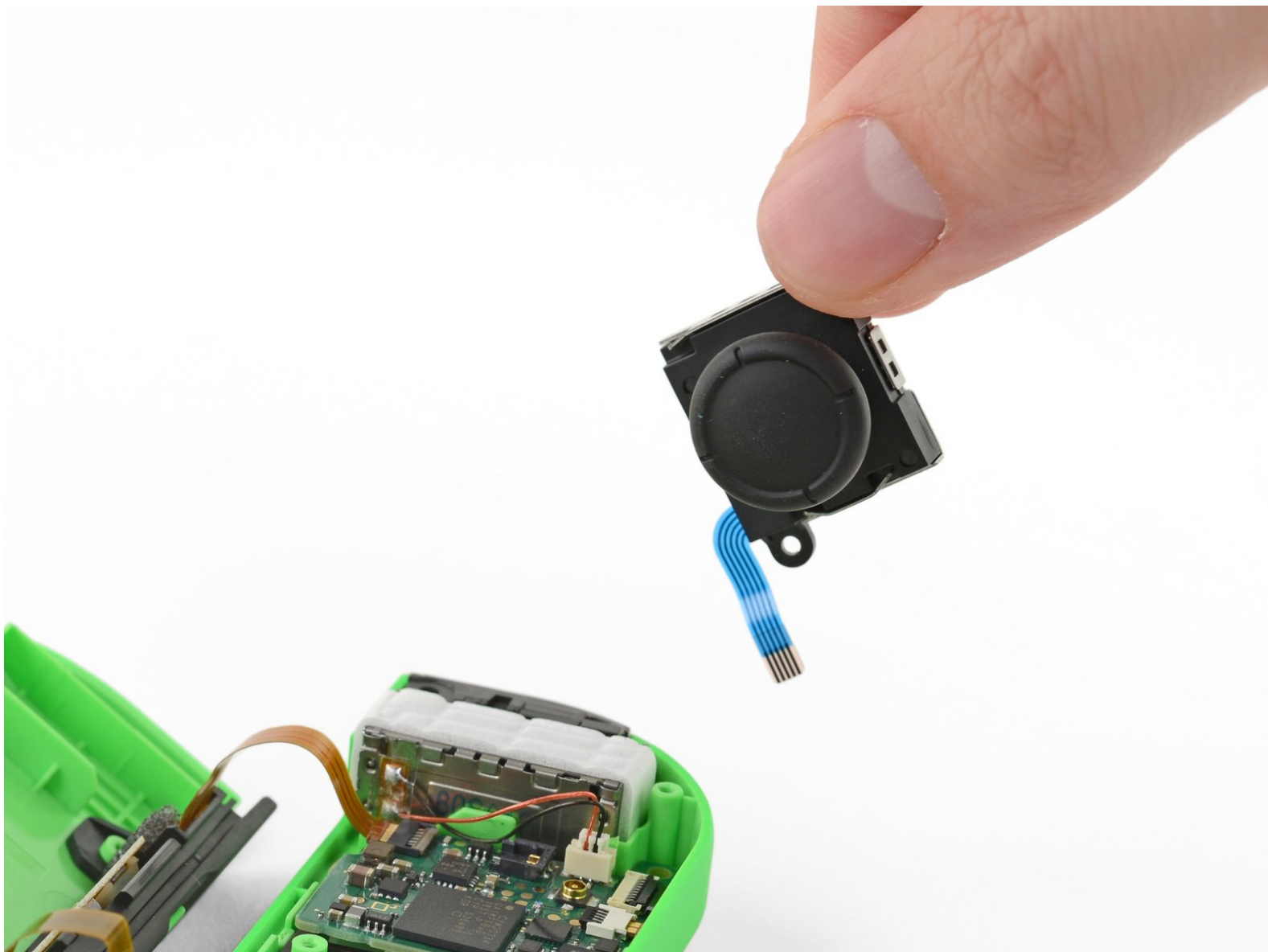




Right Joy-Con Joystick Replacement

Replace the joystick on the right Joy-Con for the Nintendo Switch. This repair fixes the notorious "Joy-Con drift" issue.

Written By: Kyler Saunders



INTRODUCTION

The Nintendo Switch comes with two Joy-Con controllers. This guide will show you how to replace the joystick of the **right** Joy-Con. The procedure for [repairing the left Joy-Con](#) is different, so be sure to follow the correct set of instructions for your controller.

Please note that this repair does not have the same steps as the left Joy-Con. If you are looking to replace the left Joystick, please follow my other guide with the specific details.



TOOLS:

- [Spudger](#) (1)
- [Tweezers](#) (1)
- [1 x Opening Picks](#) (1)
- [Tri-point Y00 Screwdriver](#) (1)
- [Phillips #00 Screwdriver](#) (1)



PARTS:

- [Nintendo Switch Joy-Con Joystick](#) (1)

Step 1 — Right Joystick



- Remove the four tri-point Y00 screws from the back panel of the Joy-Con.
- ⓘ These screws are each 6.2 mm long, but it's still a good idea to [keep them organized](#) and make sure they go back in their proper holes!

Step 2



- Insert an opening pick under the lower side of the back panel (opposite the R and ZR buttons).
- Slide the flat edge of an opening pick up the side of the Joy-Con.
- ⓘ Be careful not to slide the opening pick too far inside the Joy-Con. This may damage the inner components. The back panel loosens fairly easily, so not much pressure is needed.

Step 3



- Open the the Joy-Con like a book, with the charging rail facing away from you.

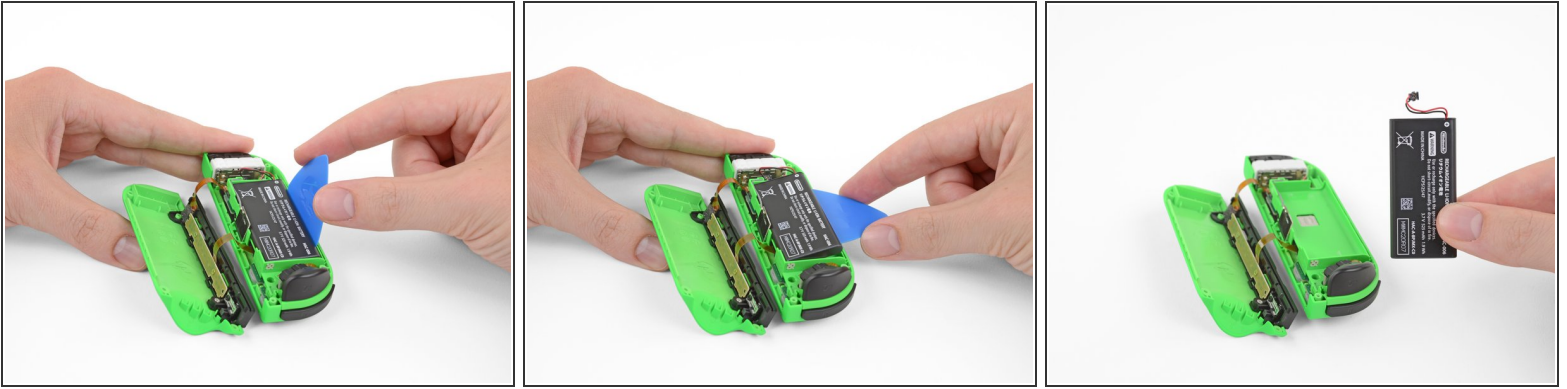
⚠ Don't try to fully remove the back panel yet. There are still two cables connecting the charging rail to the motherboard.



Step 4



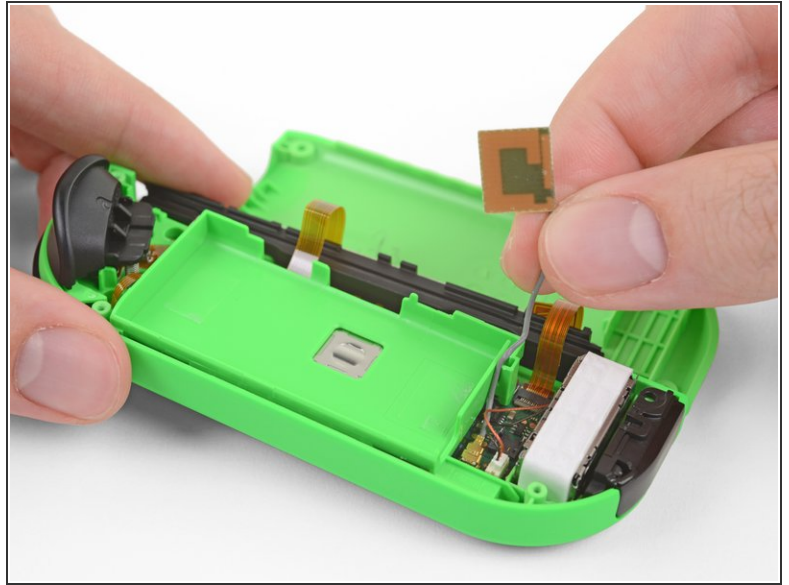
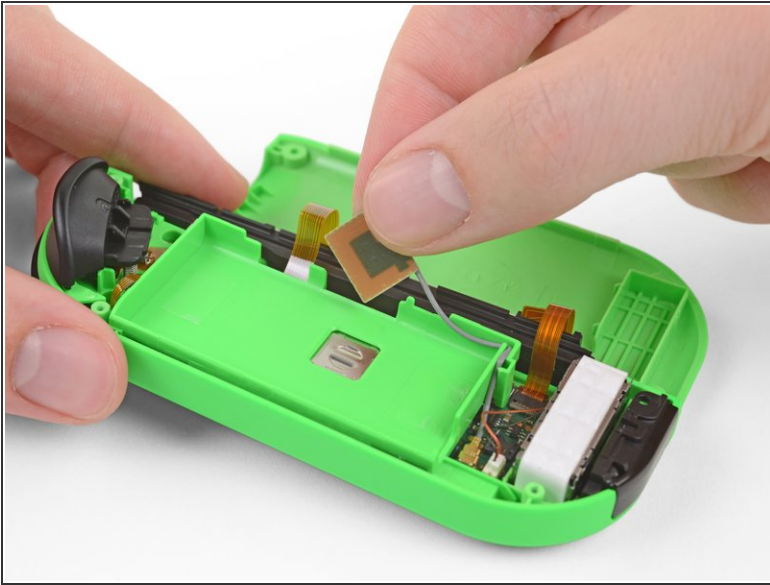
- Use a spudger to gently pry the battery connector from its socket on the motherboard. This will keep the Joy-Con from powering on during the repair.
- ⚠ Be extremely careful while you pry up the battery connector. If it does not come up easily, try gently pulling on the wires to disconnect it.

Step 5



-  The following two steps show the removal of the battery and the coaxial antenna cable from the midframe. **These two steps make for a less cluttered repair, but are not essential.** If you want, you can leave the battery and the grey coax cable in place here and proceed to [step 7](#).
- Insert an opening pick between the battery and the Joy-Con housing. Gently pry out the battery, which is lightly taped in place.
-  Be careful not to deform or puncture the battery—it can catch fire or explode if damaged.

Step 6



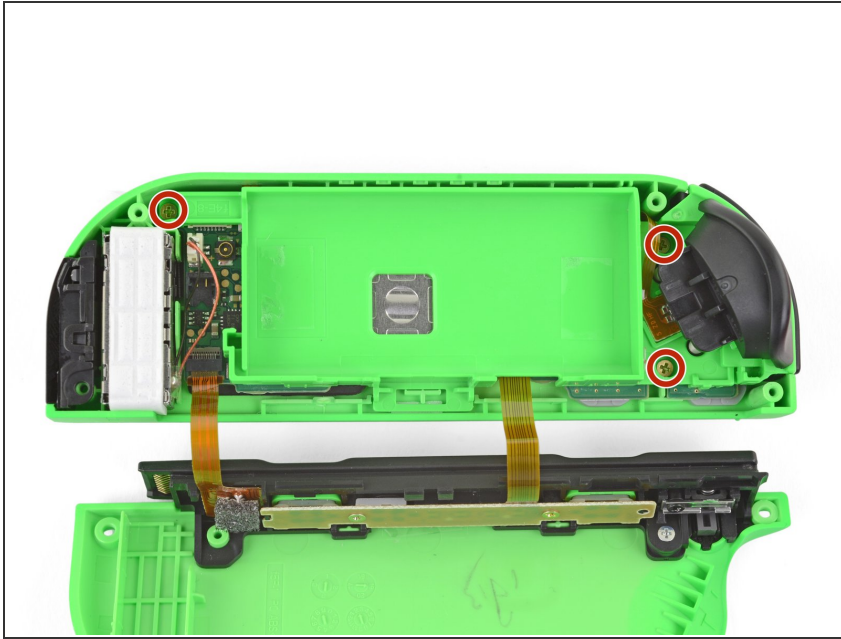
- i** Before you perform this step, take note of how the antenna cable and its PCB are seated for proper reassembly later.
- Carefully de-thread the upper half of the grey antenna cable out of the battery cavity.

Step 7




- Pry up with the pointy end of a spudger to disconnect the antenna cable's [coaxial connector](#) from the motherboard.
- Remove the grey antenna cable.
- ☑ During reassembly, reconnect the antenna cable, then make sure it is routed through the battery cavity in the midframe as it was before you took it out.

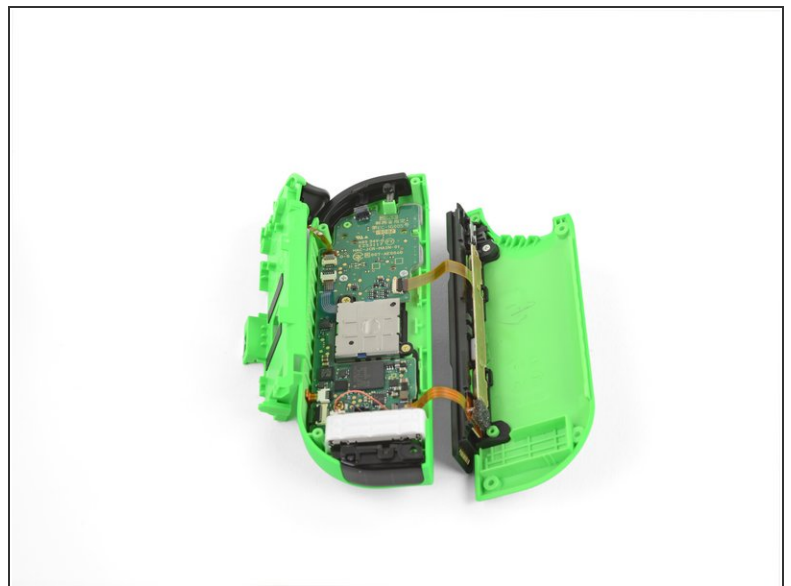
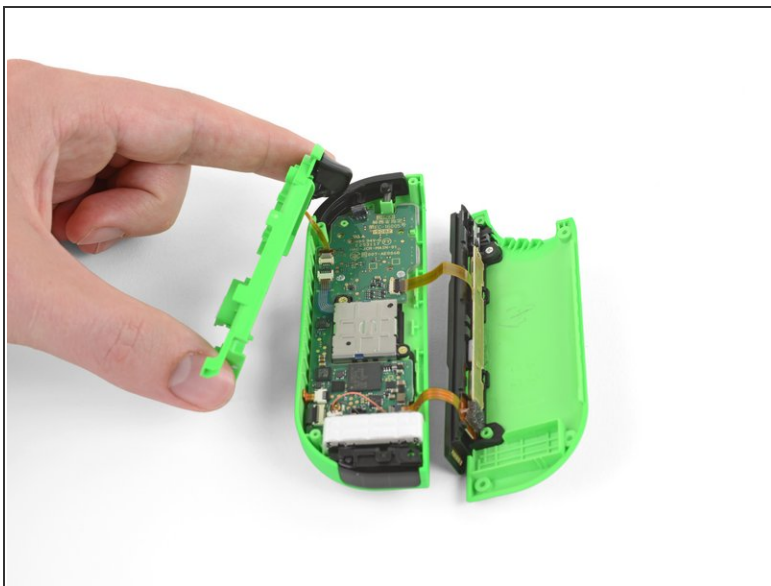
Step 8



- Remove the three 3.5 mm Phillips #00 screws on midframe.

 **Do not attempt to remove the midframe yet.** There is a fragile cable that still connects the ZR button on the midframe to the motherboard underneath.

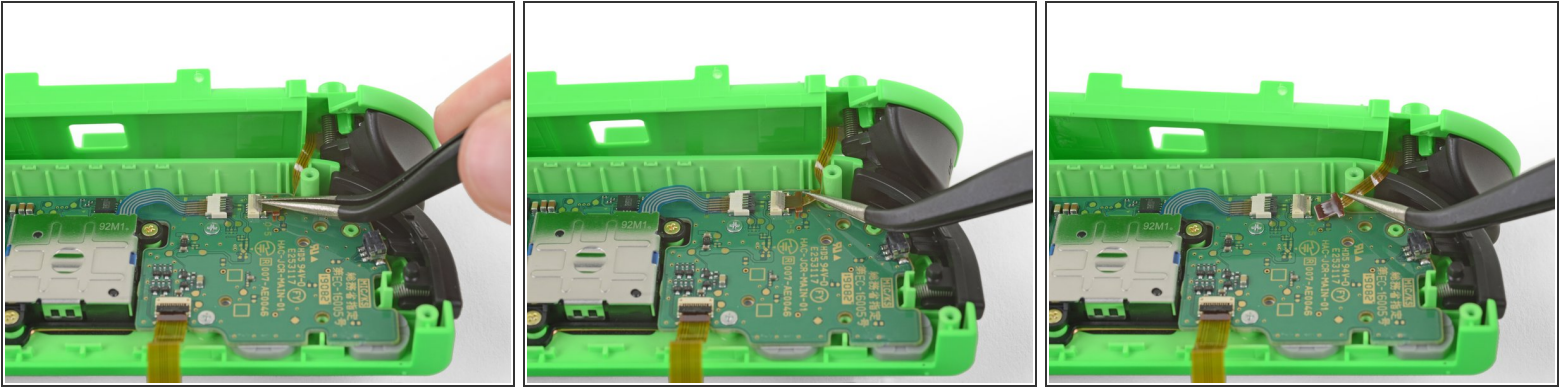
Step 9



- Carefully flip the midframe over and away from the motherboard.

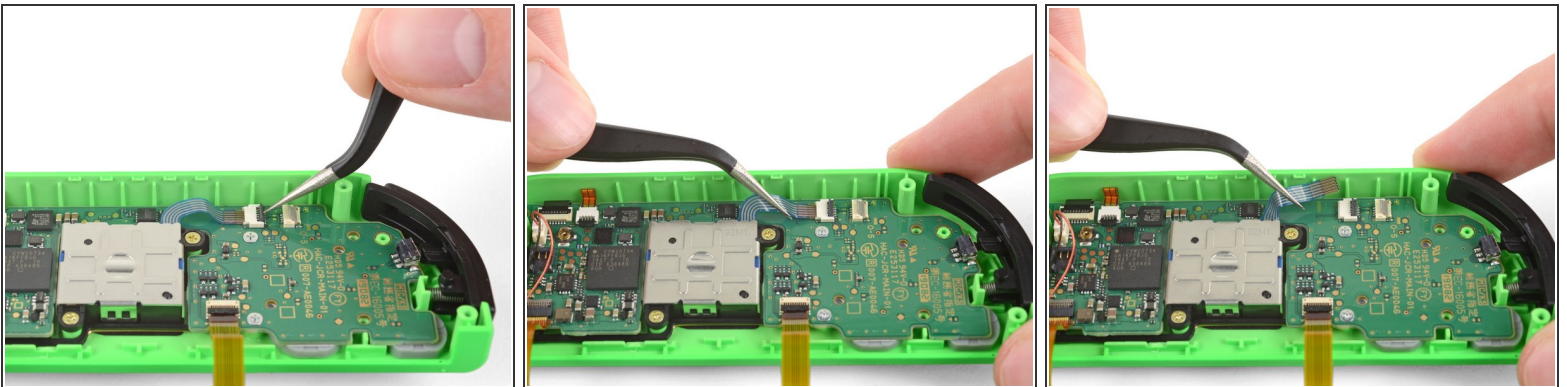
 Do your best not to stress the short ribbon cable attached to the ZR button during this step.

Step 10



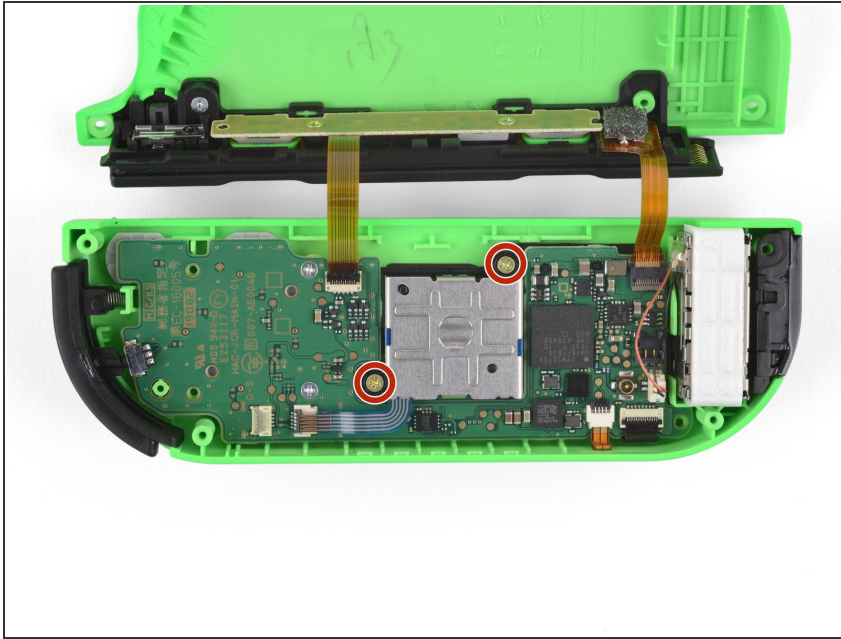
- The ZR button cable is locked in place by a small [ZIF connector](#) on the motherboard. Use tweezers or a spudger to flip up the ZIF connector lock.
- Use tweezers to gently pull the ZR button flex cable out of the ZIF connector socket. The midframe is now disconnected and can be removed.

Step 11



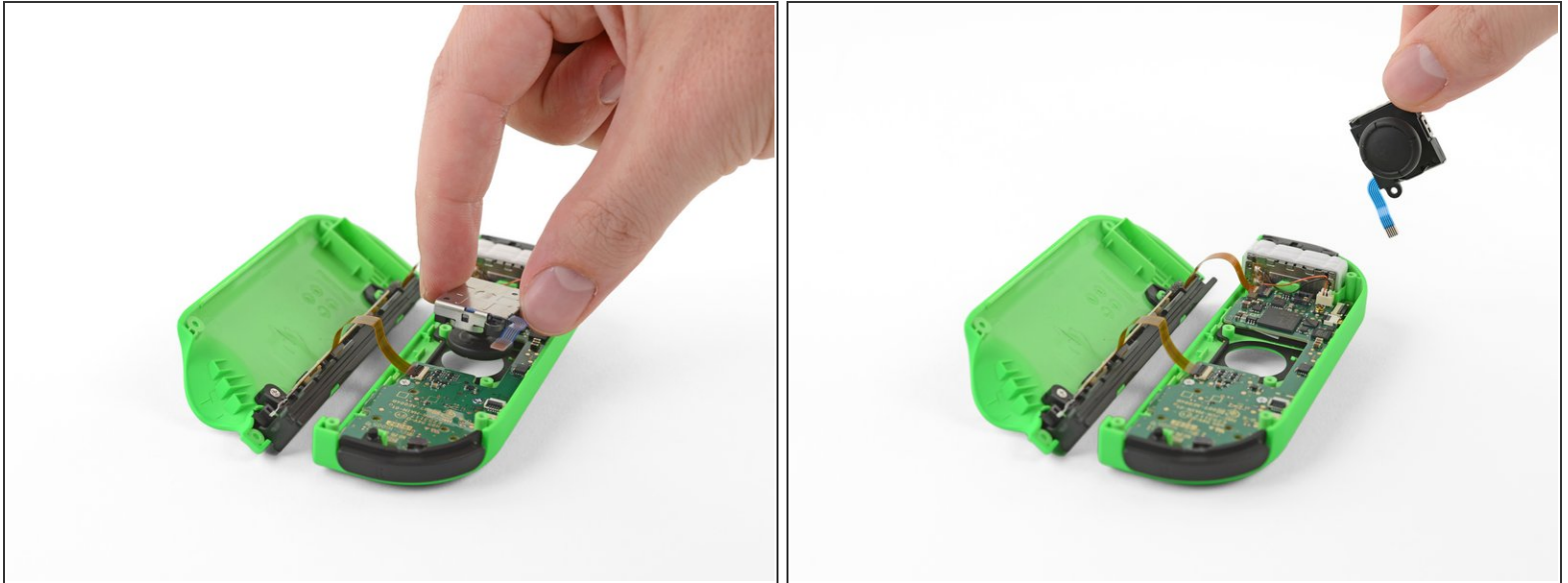
- The joystick cable is also locked into place by a ZIF connector. Use tweezers or a spudger to flip the ZIF lock upward and carefully disconnect the cable.

Step 12



- Remove the two 3.5 mm Phillips #00 screws from the joystick.

Step 13



- Carefully remove the joystick from its housing.
- i There is a thin black gasket around the hole where the joystick pokes through the Joy-Con. Do your best not to disturb this gasket as you remove the joystick!
- ★ Once the Joy-Con is fully reassembled, connect it to your Nintendo Switch and [calibrate the new joystick](#).

To reassemble your device, follow the above steps in reverse order.

Take your e-waste to an [R2 or e-Stewards certified recycler](#).

Repair didn't go as planned? Check out our [Answers community](#) for troubleshooting help.