



Ring Doorbell Battery Replacement

Pictorial guide for how to open and replace the battery Electrostatic Discharge precautions recommended.

Written By: Greg Beeblebrox



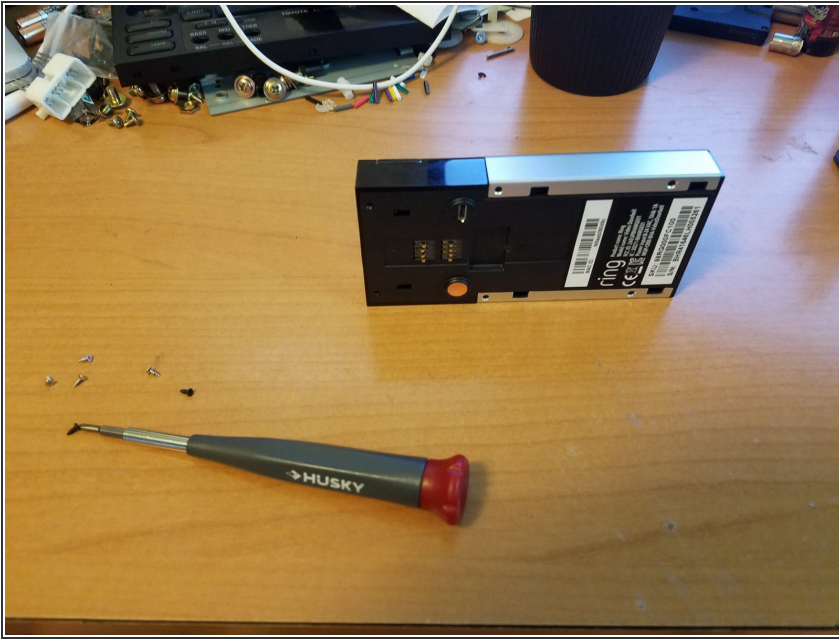
INTRODUCTION

This guide is to show how to open the Ring Doorbell to replace the battery. This is only for the 1st gen ring doorbells as newer versions do not have a battery and require full time power.

TOOLS:

- [iFixit Opening Tools](#) (1)
 - [Phillips #00 Screwdriver](#) (1)
 - [2.5 mm Flathead Screwdriver](#) (1)
-

Step 1 — Battery



- Start by removing the 8 screws. the 4 black ones are hidden by the aluminum plate.

Step 2



- Pry the aluminum cover carefully off- this will reveal the 4 black screws underneath. You will need a micro phillips screwdriver to remove these tiny screws.

Step 3



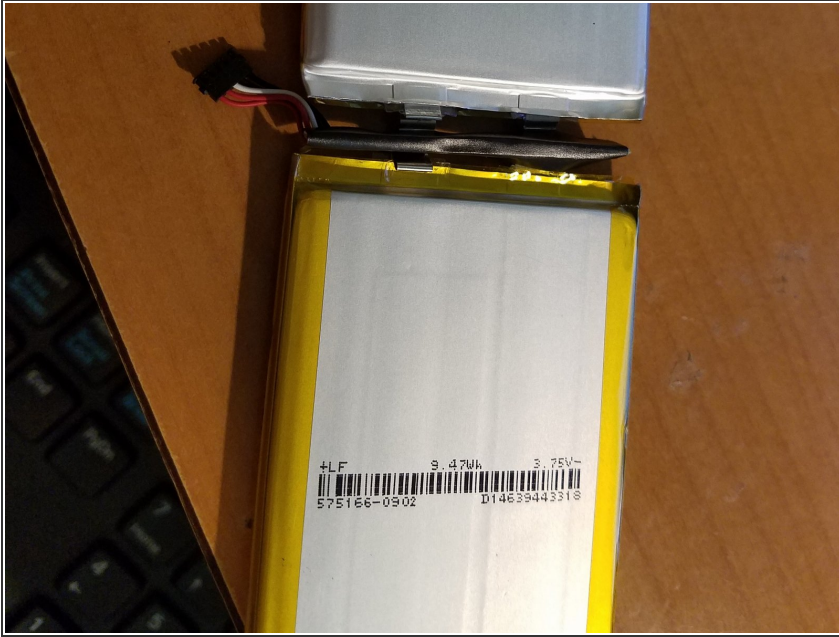
- Carefully pry the plastic with a plastic pry tool to pop the insert out- watch the micro usb port that is sticking out...

Step 4



- carefully pull directly up on the connector. The battery MAY still be attached to the plate-so be careful.

Step 5



- This battery is two Lithium polymer batteries connected in parallel to the regulator. The batteries are back to back and are rated at 9.47wh @ 3.75v each...I have yet to find this battery but assume it is available somewhere in raw form.

Step 6



- assembly is pretty straight forward- just reassemble in reverse order- good luck!

To reassemble your device, follow these instructions in reverse order.