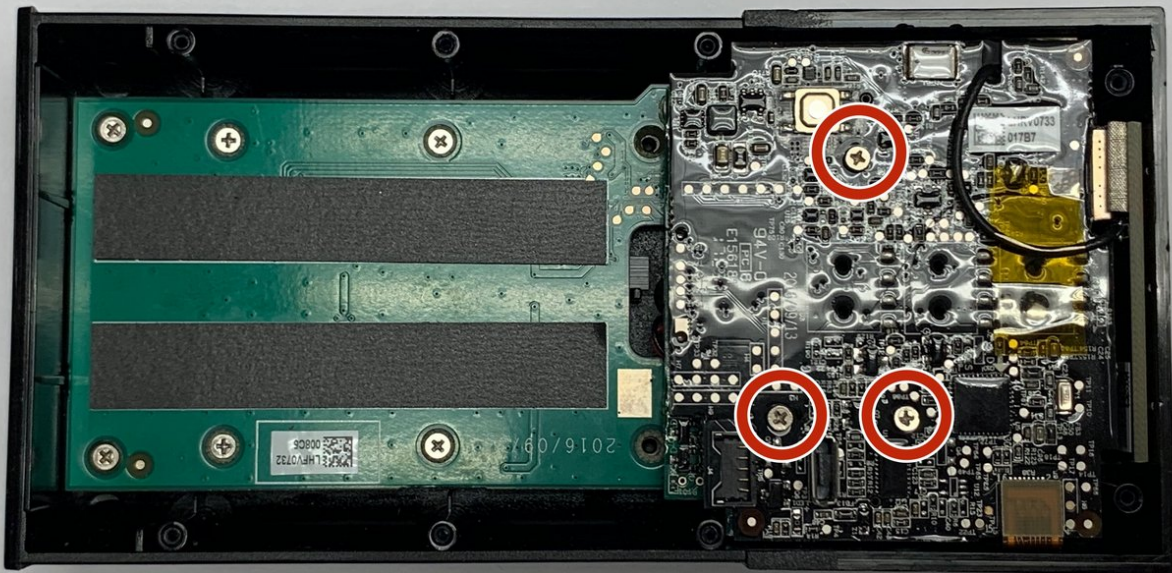




Ring Stick Up Cam Camera Replacement

A guide for replacing the camera in a Ring Stick Up Cam

Written By: Ao Li



INTRODUCTION

In this guide, we will show you how to replace the camera in a Ring Stick Up Cam. You will need a Phillips #00 screwdriver and a plastic opening tool.

TOOLS:

- [Phillips #00 Screwdriver](#) (1)
 - [iFixit Opening Tools](#) (1)
-

Step 1 — Battery



- Remove the six 6mm Phillips #00 screws from the back of the device.

Step 2



- Pry off the aluminum plate using a plastic opening tool.

Step 3



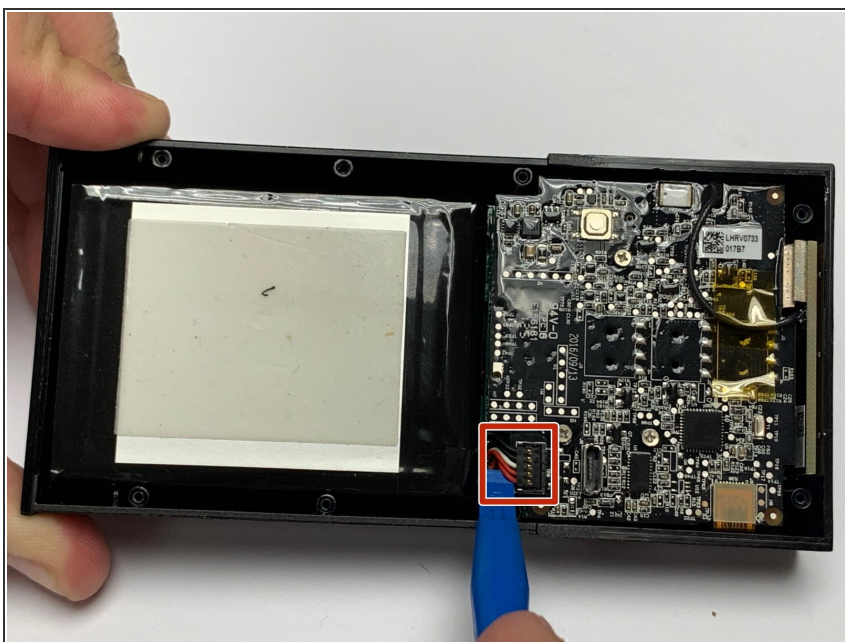
- Remove the two 6mm Phillips #00 screws that were under the aluminum plate.

Step 4



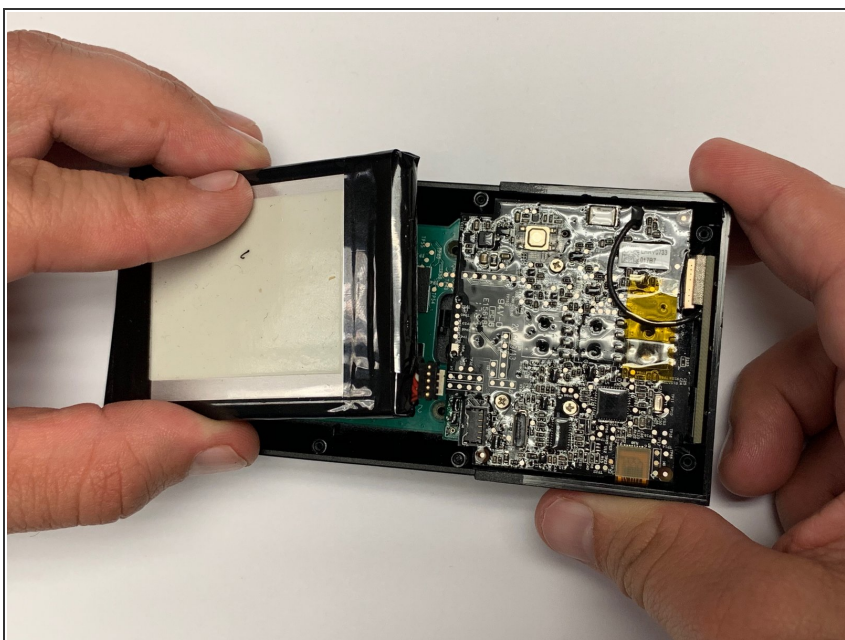
- Pry off the back cover using a plastic opening tool.

Step 5



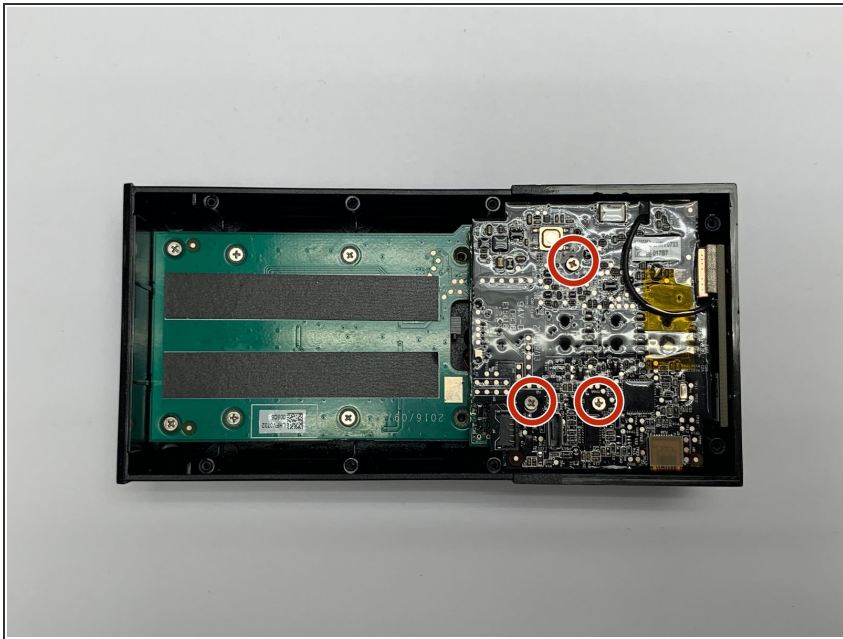
- Disconnect the battery power leads using a plastic opening tool.

Step 6



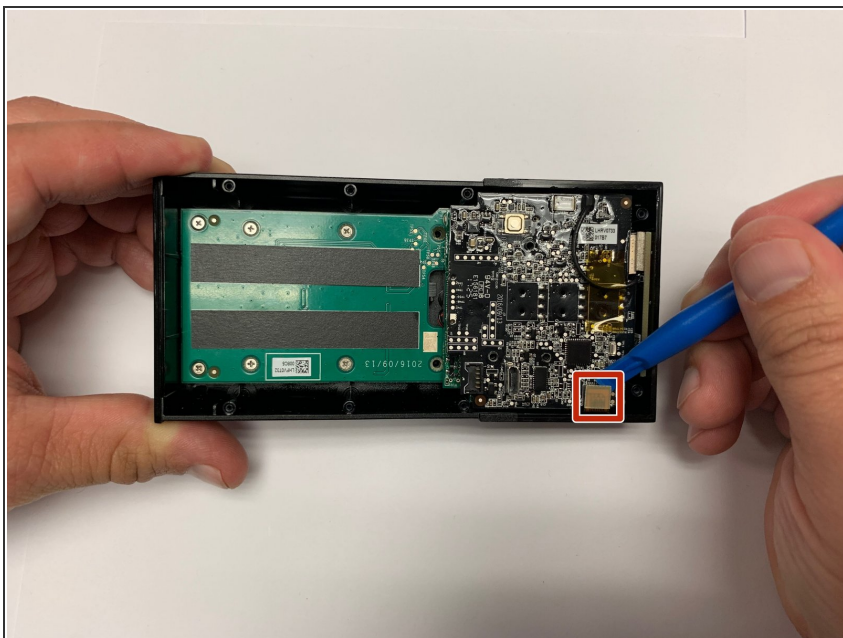
- Use a plastic opening tool to loosen the adhesive holding the battery in place and remove the battery by hand.

Step 7 — Camera



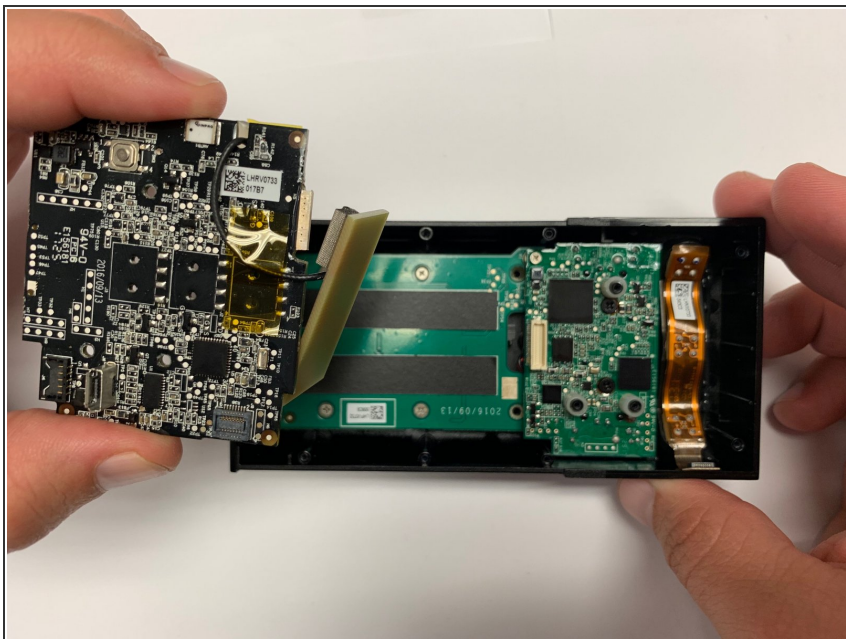
- Remove the three silver 6mm Phillips #00 screws holding the motherboard in the device.

Step 8



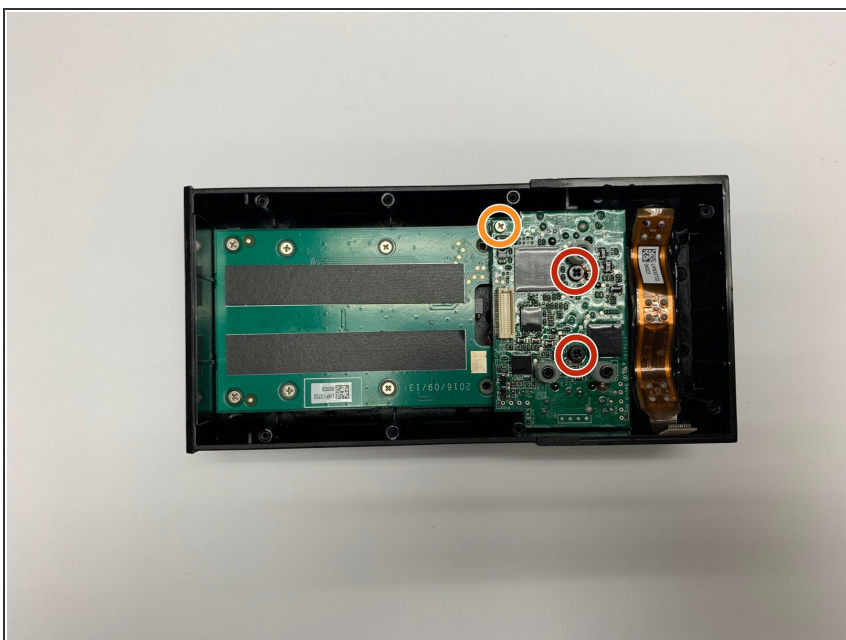
- Disconnect the ribbon connector shown in the photo.

Step 9



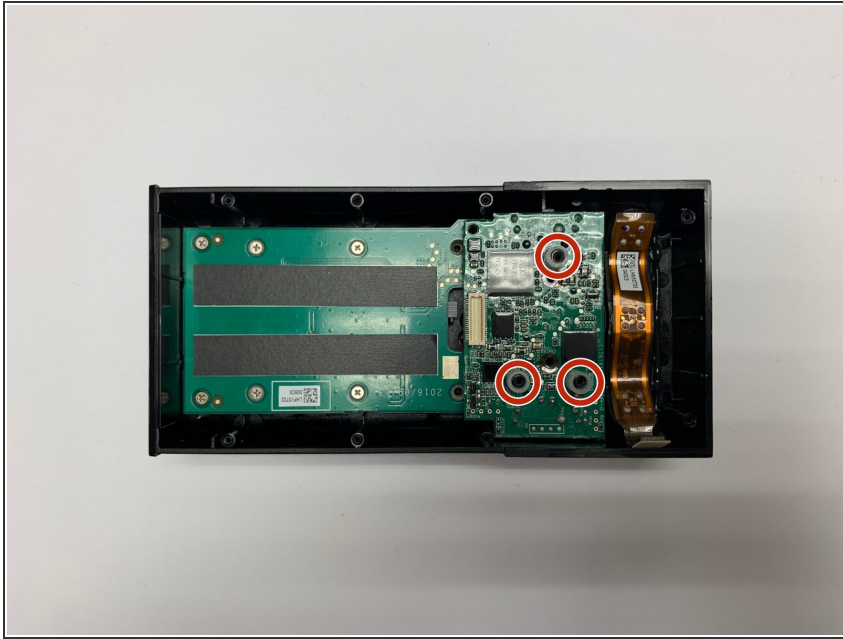
- Remove the motherboard from the device by hand.

Step 10



- Remove the two black 5mm Phillips #00 screws holding the camera board into the device.
- Remove the single silver 10mm Phillips #00 screw holding the camera board into the device.

Step 11



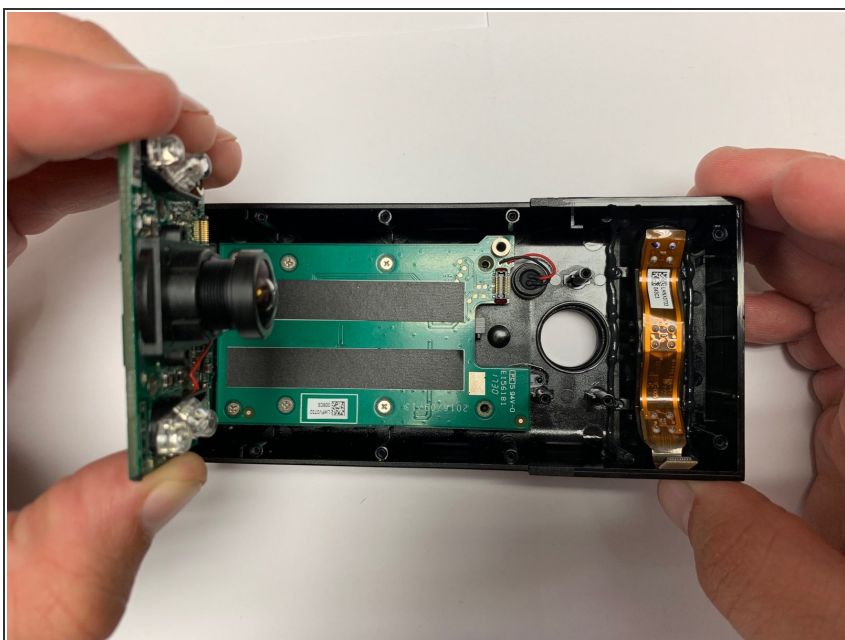
- Remove the three plastic spacers shown in the photo by hand.

Step 12



- Carefully disconnect the camera board from the daughterboard by sliding a plastic opening tool between the camera board and the daughterboard.

Step 13



- Lift the camera board out of the housing using your hand.

To reassemble your device, follow these instructions in reverse order.