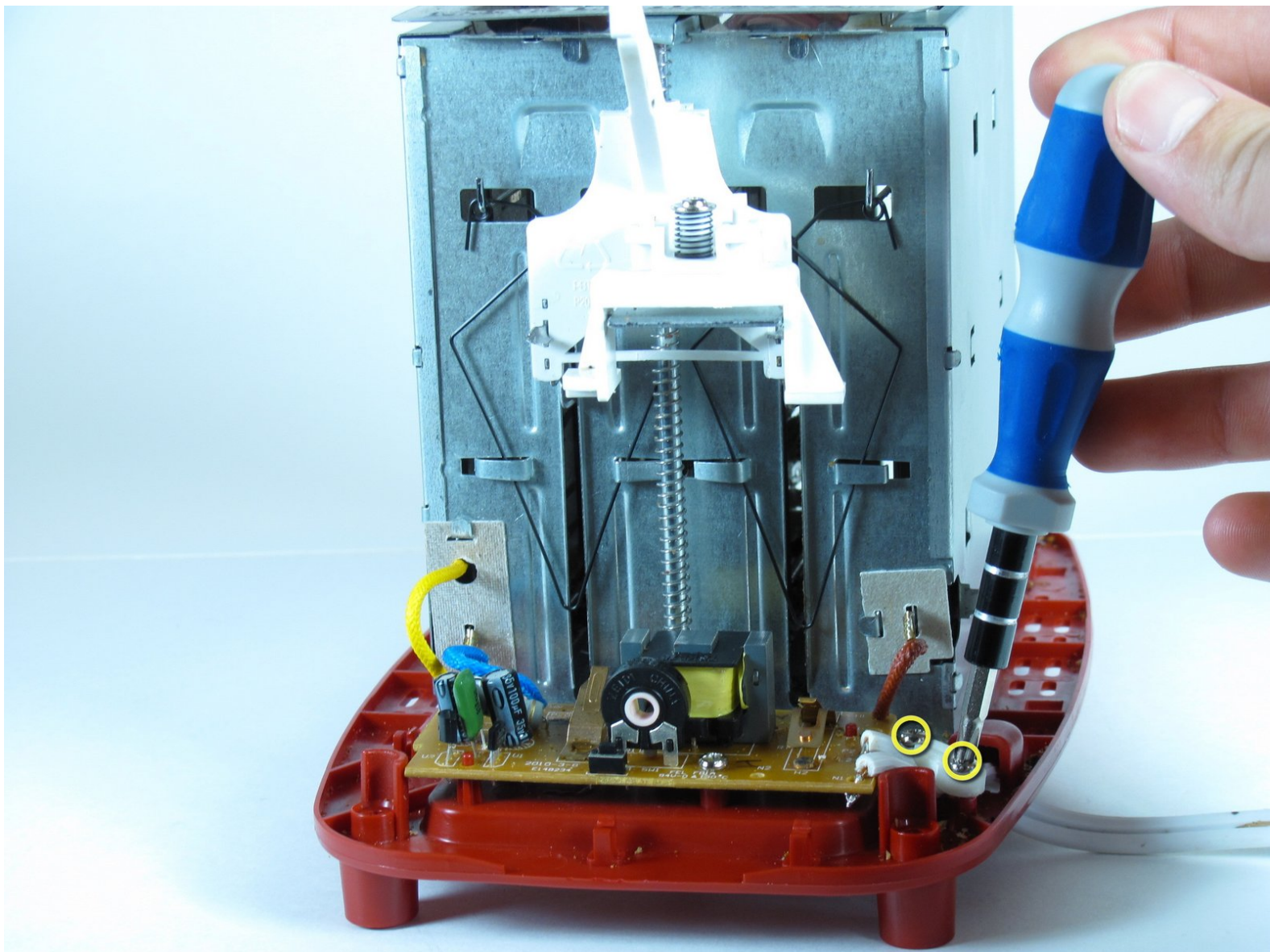




Rival 16131 Toaster Power Wire Repair

This guide will show the points where the wire connects to the circuit board.

Written By: Grant Haug





TOOLS:

- [Solder](#) (1)
 - [Soldering Iron](#) (1)
-

Step 1 — Shell Removal



⚠ Make sure the toaster is unplugged before starting.

- Turn the toaster upside down and remove the rubber feet.

Step 2



- Using a #2 Phillips head screwdriver, remove the four 12mm screws that attach the toaster shell.

Step 3



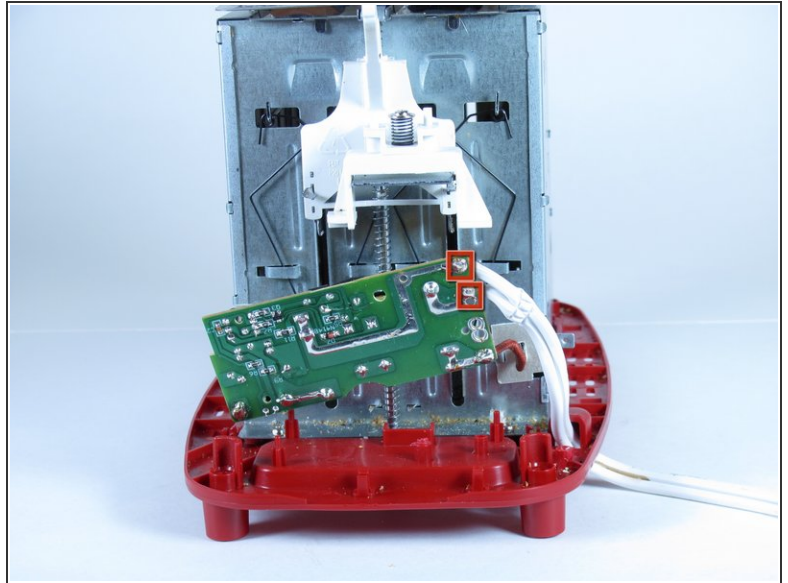
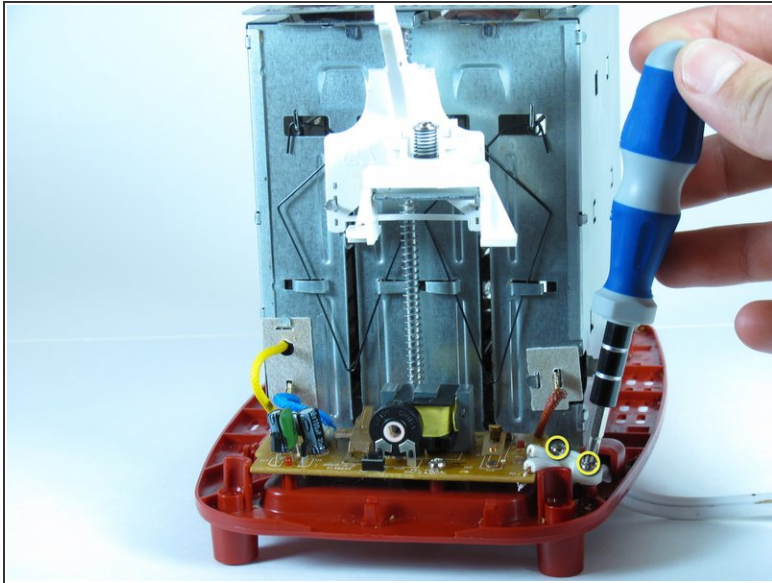
- With the dial facing you, push the toaster base up and away until the base is just over the lip of the shell. This will disconnect the browning dial from the rest of the toaster.
- ⓘ When reassembling the toaster, make sure that the back of the dial lines up with the slot both in position and orientation (the dial and slot are not perfect circles - they have a notch).
- The only object holding the shell onto the toaster now is the grey part of the lever.

Step 4



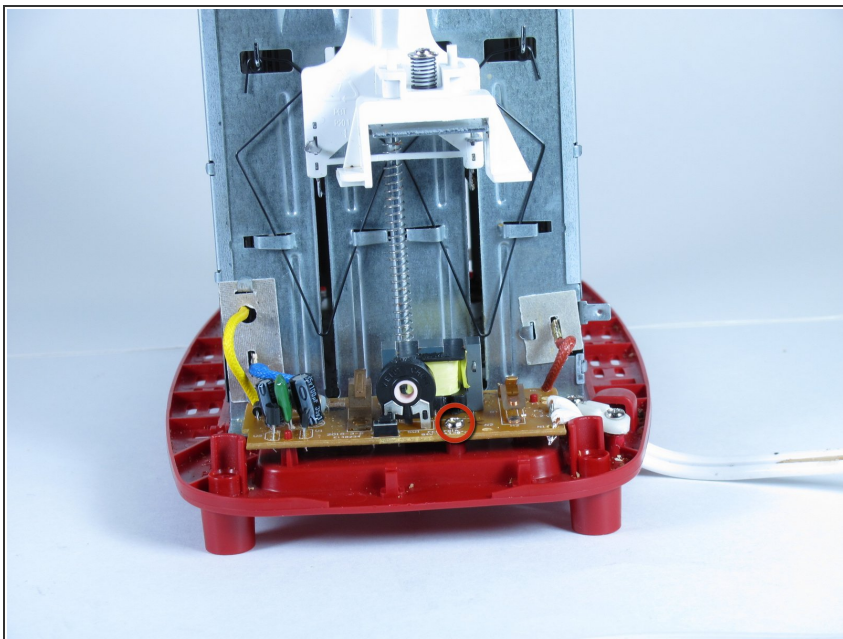
- Reach under the shell and grab the back, white part of the lever.
- Grab the grey lever between your index finger and your middle finger and pull.
- ⚠ Pulling too hard will break the mechanism that holds the grey handle onto the white lever.
- Remove the shell.

Step 5 — Rival 16131 Toaster Power Wire Repair



- The power wire connects to the toaster in the area highlighted.
- To free the wire, unscrew the two .5 inch screws, and remove the white brace.

Step 6



- To solder the the wire, the circuit board has to be released.
- To do this, unscrew the .5 inch screw located in the middle of the board.
- Slowly lift the board up off the toaster, making sure that the red pegs that hold the board in place do not break.

Step 7



- To reattach the wire, follow this solder guide.
- [Solder Guide](#)

To reassemble your device, follow these instructions in reverse order.