



Rival CM4015 Base Plate Replacement

Prerequisite Only

Written By: Jacob Hanson

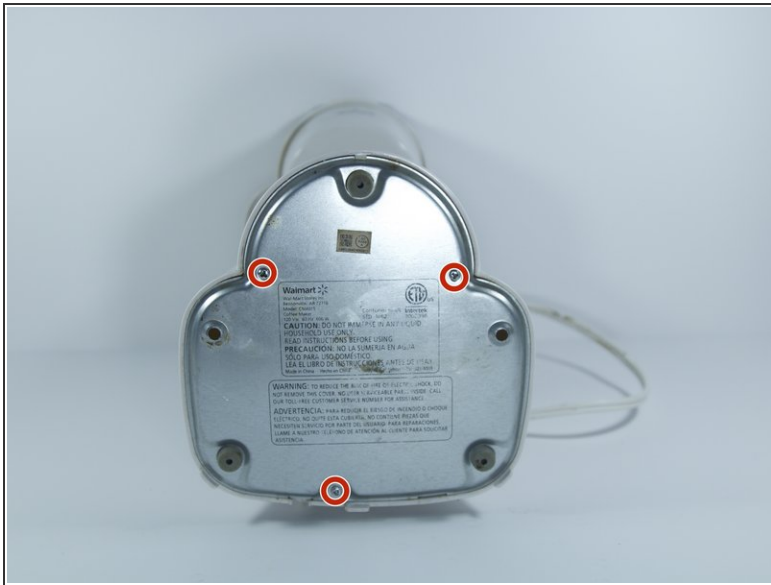




TOOLS:

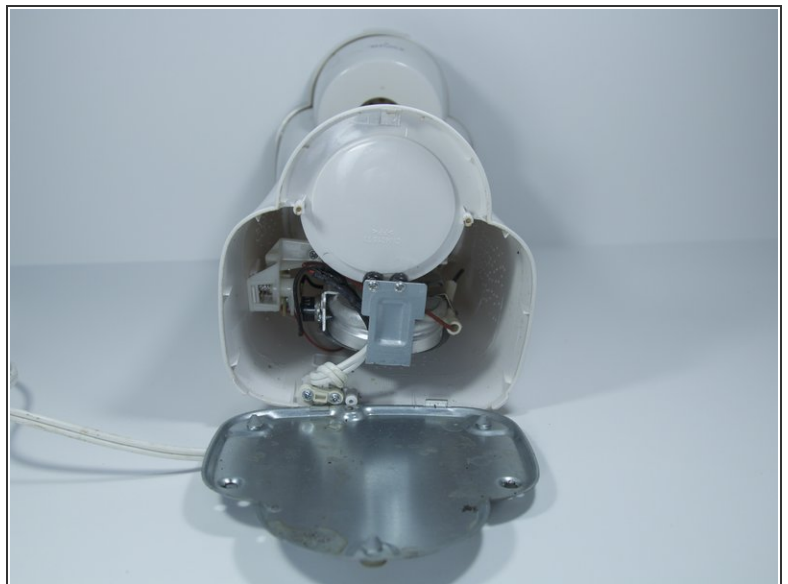
- [Tri-point Y0 Screwdriver](#) (1)
-

Step 1 — Base Plate



- Remove the three 16 mm tri-point screws from the base plate.

Step 2



- Remove the base plate by pressing the plastic body away from the metal plate with your thumbs.

To reassemble your device, follow these instructions in reverse order.

This document was generated on 2019-10-30 02:49:35 PM (MST).