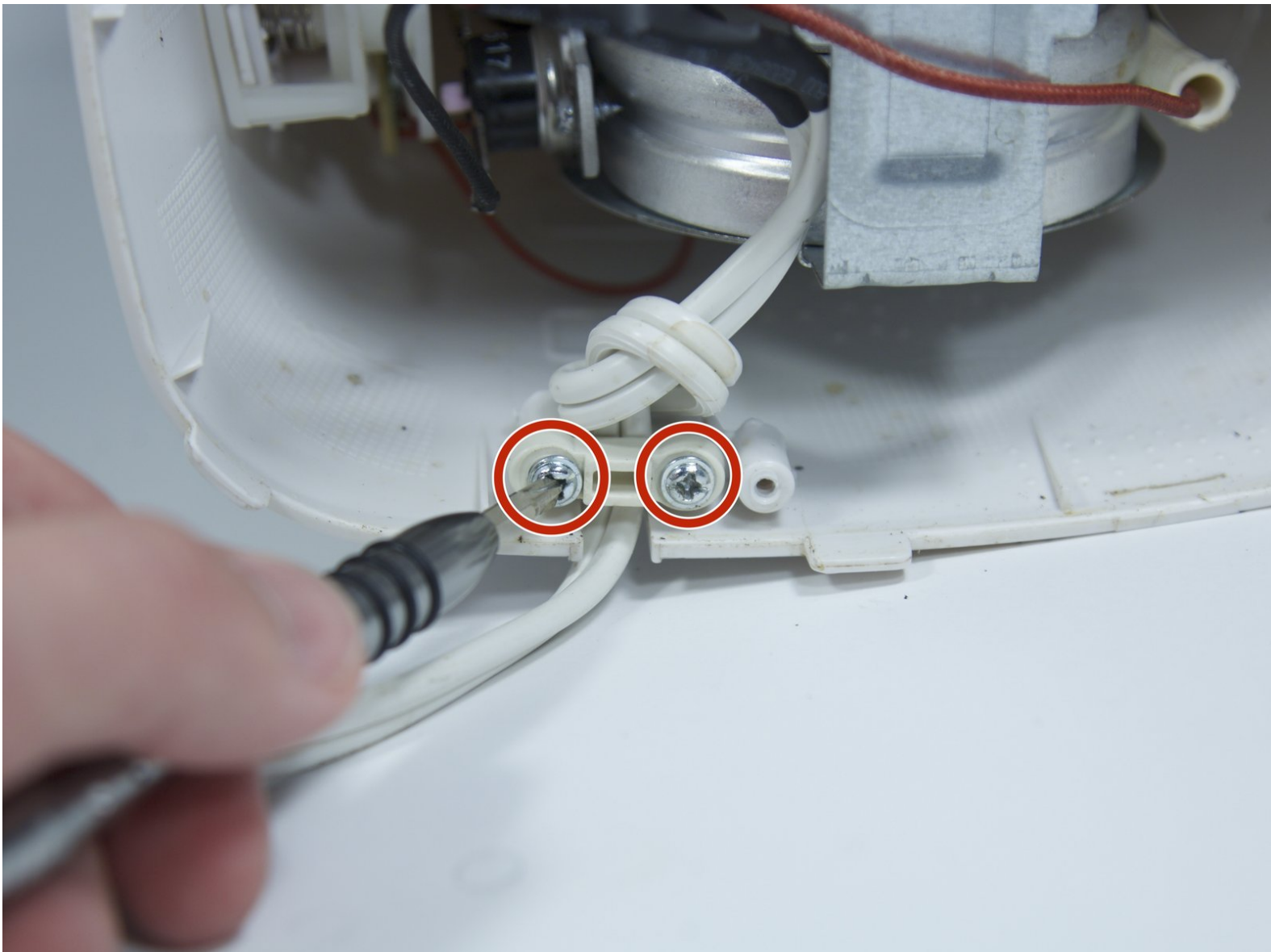




Rival CM4015 Heating Element Replacement

Replace the heating element if the water in the coffee maker does not heat up.

Written By: Michael Murdock



INTRODUCTION

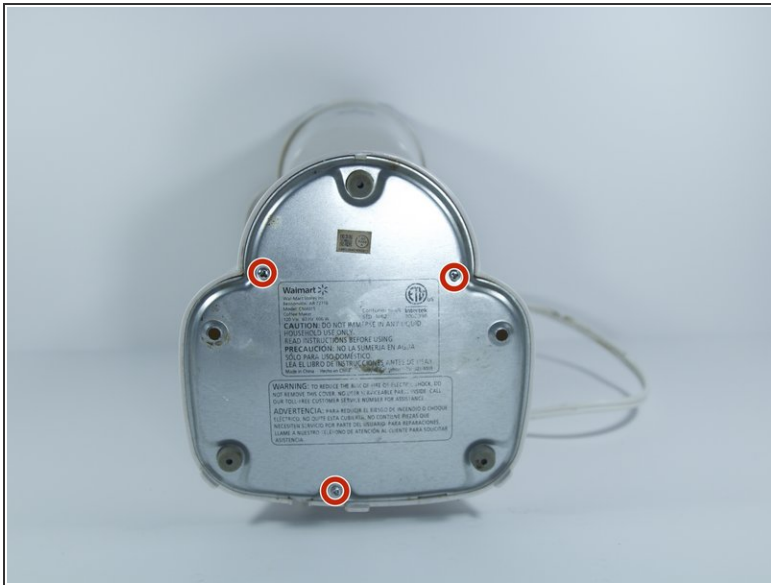
The Rival single cup coffee maker has a heating element that is prone to breaking. If the device is left on for too long, the heating element can over heat and stop working.



TOOLS:

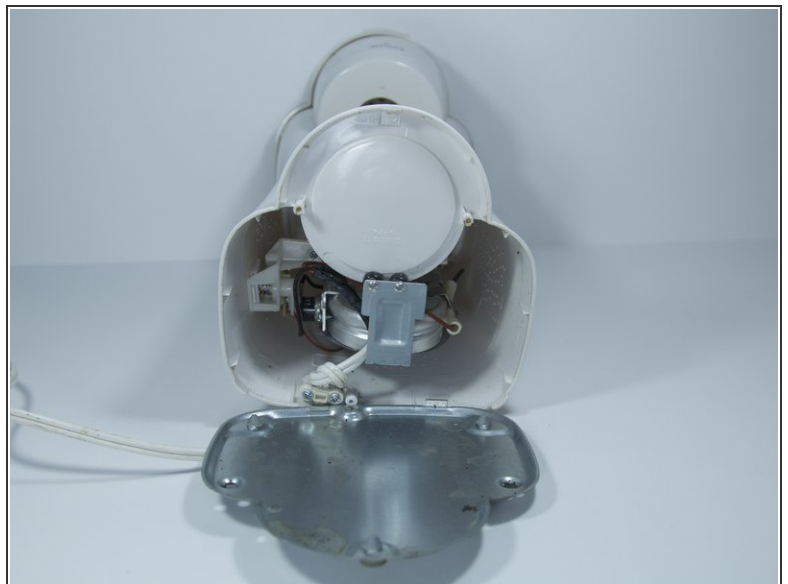
- [Phillips #0 Screwdriver](#) (1)
 - [Flathead 3/32" or 2.5 mm Screwdriver](#) (1)
 - [Tri-point Y0 Screwdriver](#) (1)
-

Step 1 — Base Plate



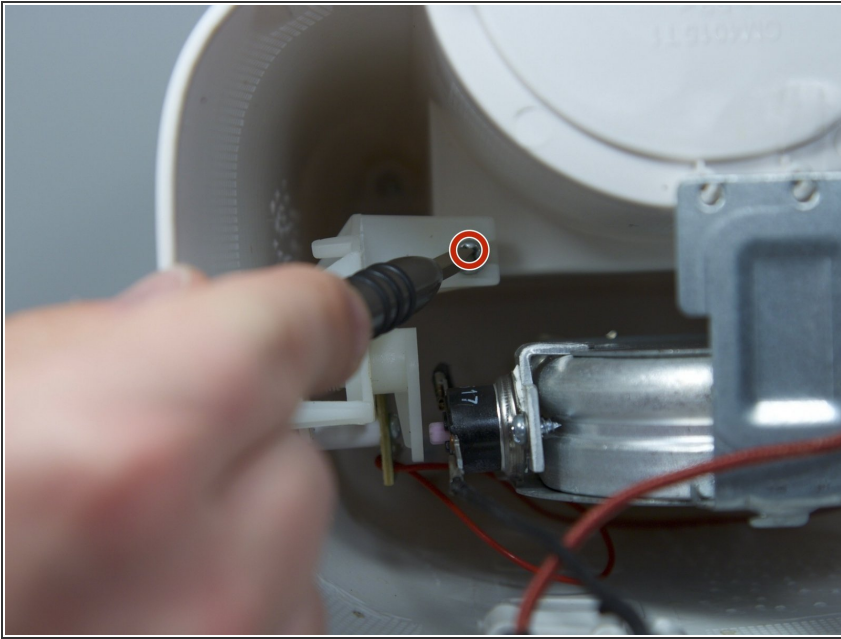
- Remove the three 16 mm tri-point screws from the base plate.

Step 2



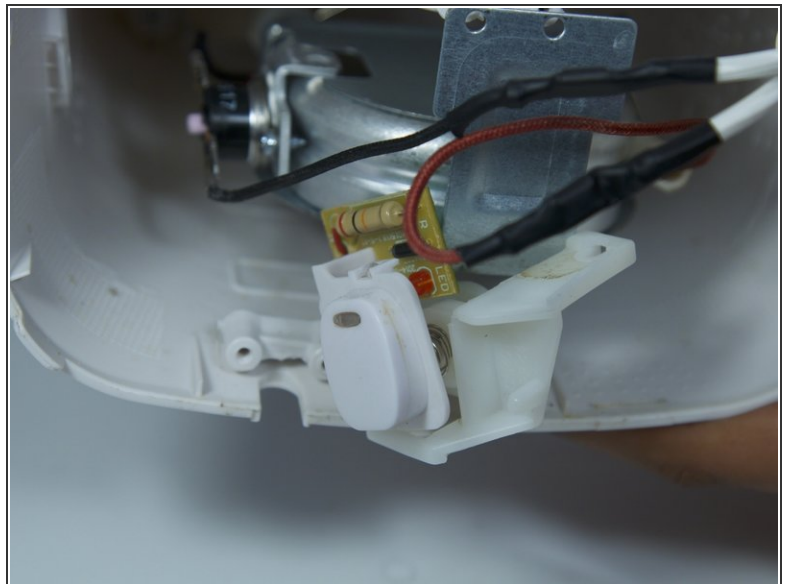
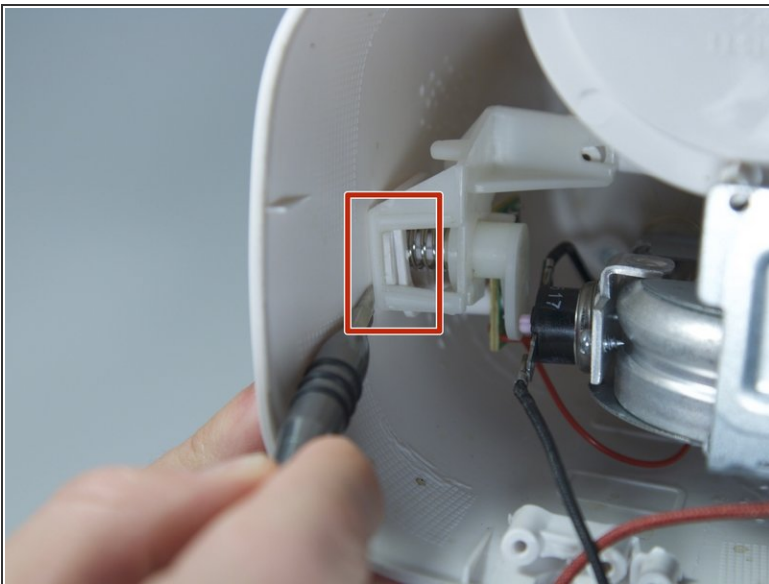
- Remove the base plate by pressing the plastic body away from the metal plate with your thumbs.

Step 3 — Power Button



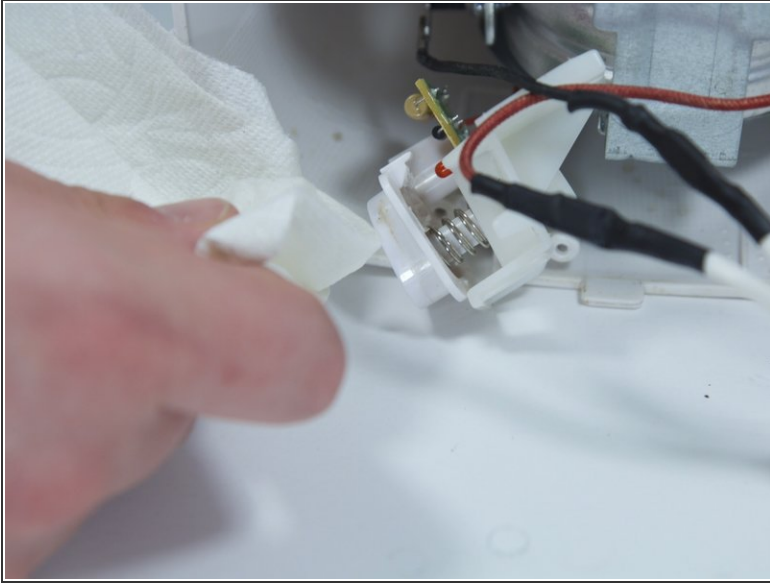
- Remove the 8mm Phillips screw that attaches the power button to the inside of the coffee maker.

Step 4



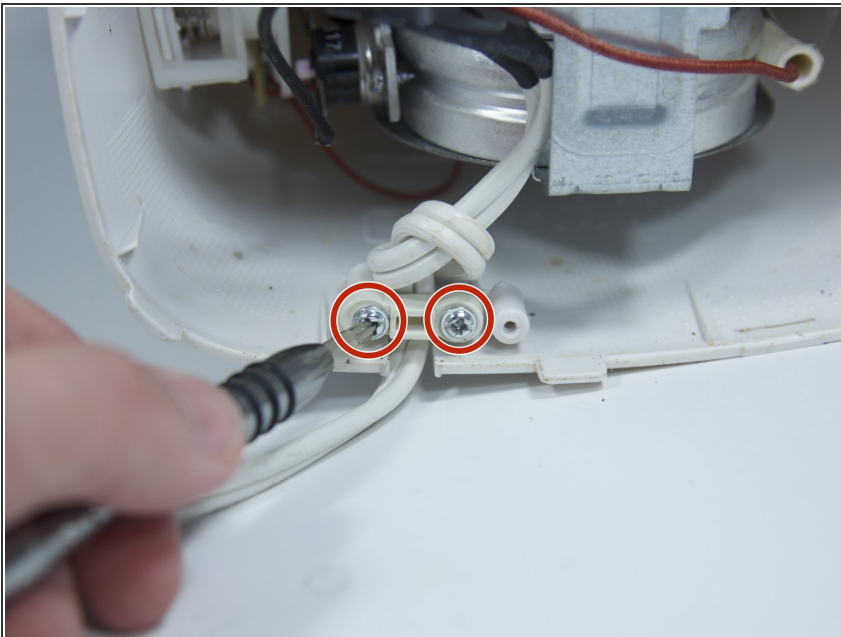
- Use a flat head screwdriver to pry the power button from its slot in the body of the device.
- ⓘ Make sure the tool is pressed securely under the plastic clip, in order to not break it.

Step 5



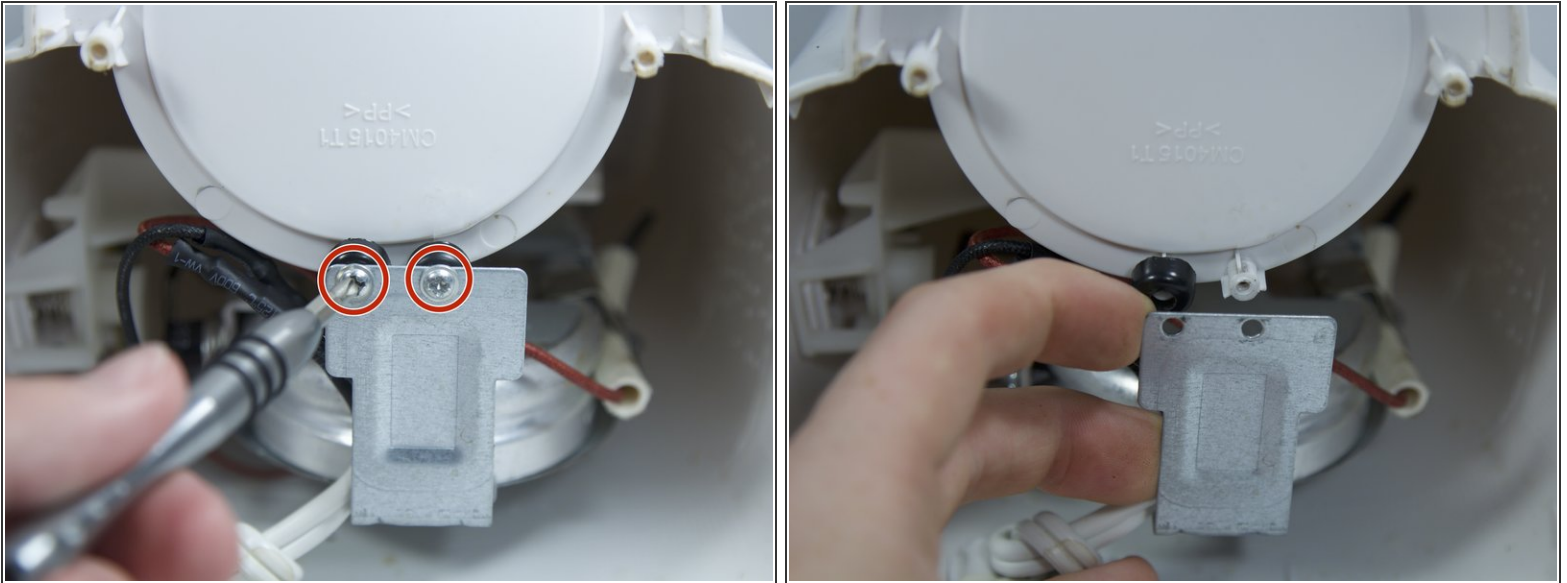
- Clean both the button and its slot before replacing the power button.

Step 6 — Heating Element



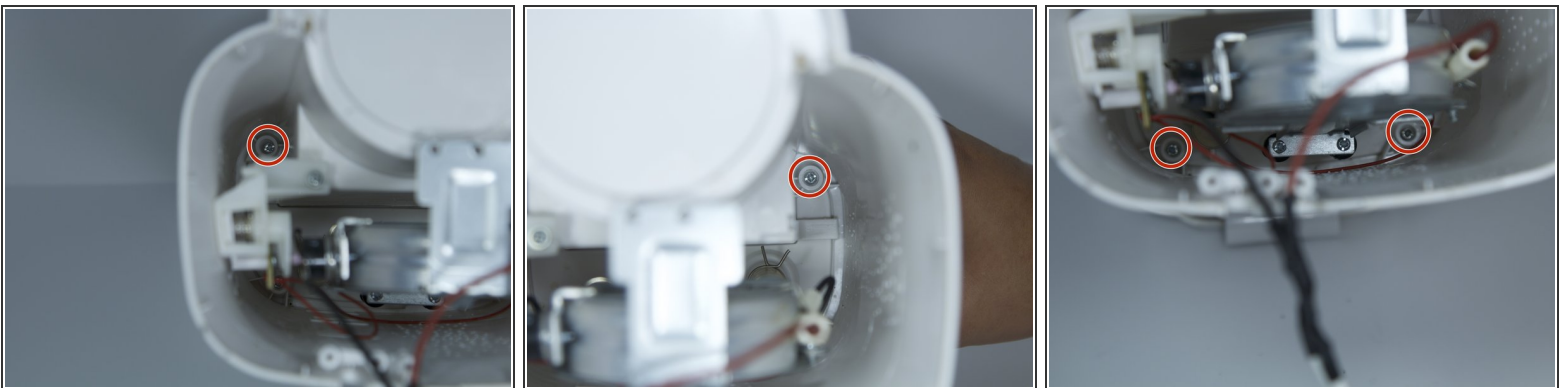
- Remove the two 8 mm Phillips screws from the plastic body.

Step 7



- Remove the two 8 mm Phillips screws from the chassis of coffee maker.
- Pull back the metal backing from the plastic body.

Step 8



- Remove the four 8 mm Phillips screws from the inner plastic body.
- ⓘ You will need a long, thin Phillips screw driver to get this deep into the device.

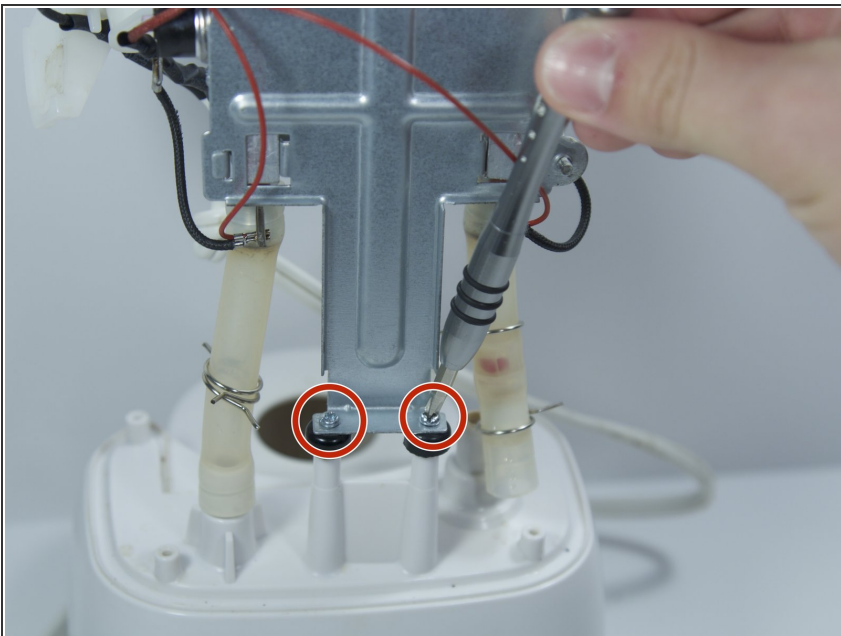
Step 9



- Flip the device upside down and remove the outer plastic body from the device by pulling straight up.

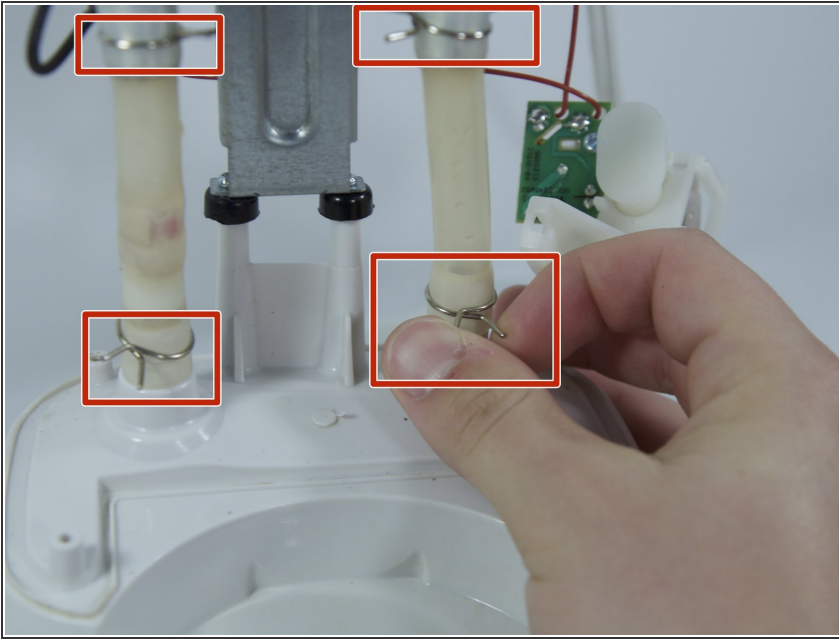
⚠ Take your time to make sure the thin cables within the device don't tear.

Step 10



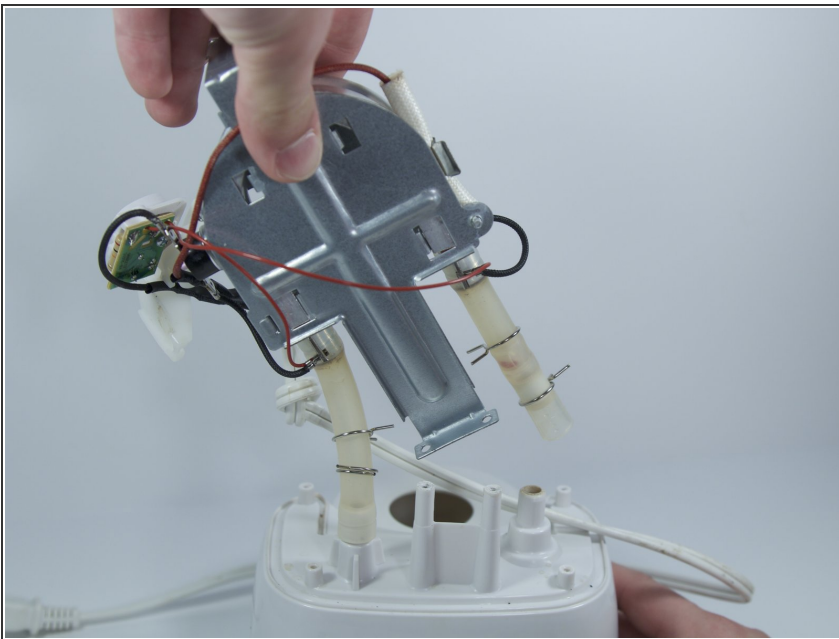
- Remove the two 8 mm Phillips screws from the metal backing.

Step 11



- Remove the 4 springs holding the water tubes by squeezing the 2 prongs together.
- ⓘ You may also use pliers for this step if the springs are too strong.

Step 12



- Bend the heating element back and forth to wiggle the water tubes loose from the plastic.

To reassemble your device, follow these instructions in reverse order.