



Rival CM4015 Lid Replacement

Replace the lid to allow you to cover the coffee grounds in your coffee maker.

Written By: Connor Tustin



INTRODUCTION

The Rival single cup coffee maker has a plastic lid that is prone to breaking. The plastic hinges can easily break if the lid is pushed too far back. The lid is held in place by plastic clips and plastic tabs that act as a hinge.

Step 1 — Lid



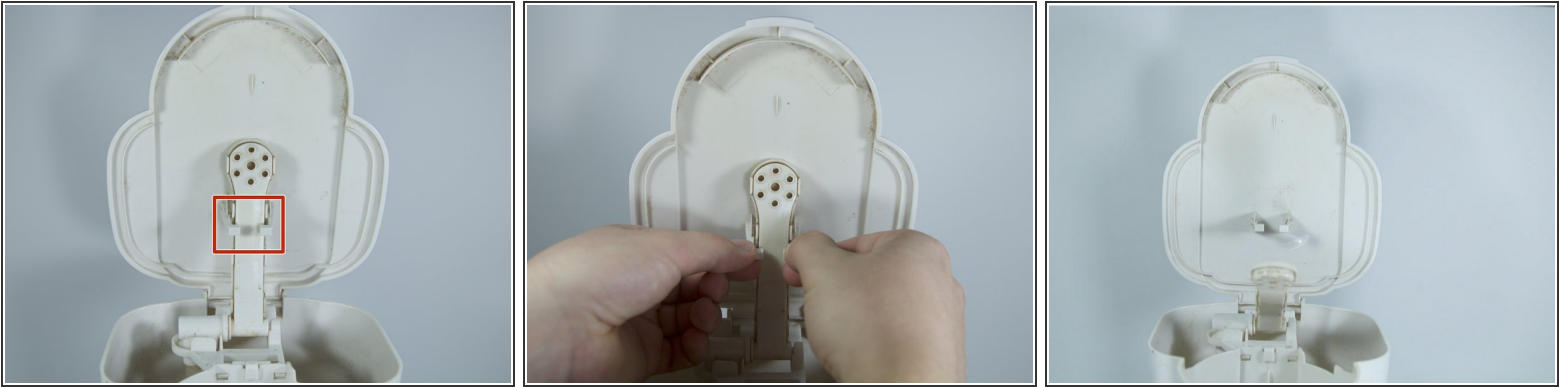
- Lift lid up to an open position.

Step 2



- Remove the coffee filter by lifting the filter up and out of the device.

Step 3



- Locate the plastic clips keeping the lid in place.
- Pull the clips apart to free the lid.

Step 4



- Lift the lid up in order to separate it from the coffee maker.
- ⓘ It may take some force to detach the lid.

To reassemble your device, follow these instructions in reverse order.