



# Rival CM4015 Power Button Replacement

This guide is to help you replace the power button on your Rival CM4015 coffeemaker to solve your problem with the device not powering on or the power button getting stuck.

Written By: Connor Tustin



## INTRODUCTION

First, make sure that the device is unplugged from the socket. Before replacing the power button you must unscrew the metal base plate. After doing this all you need to do is unscrew the button on the inside of the device and pry it out of the slot on the body of the device. Pry with enough force to detach the button but not so much that it breaks the plastic button.



### TOOLS:

- [Tri-point Y0 Screwdriver](#) (1)
- [Phillips #0 Screwdriver](#) (1)
- [Flathead 3/32" or 2.5 mm Screwdriver](#) (1)

## Step 1 — Base Plate



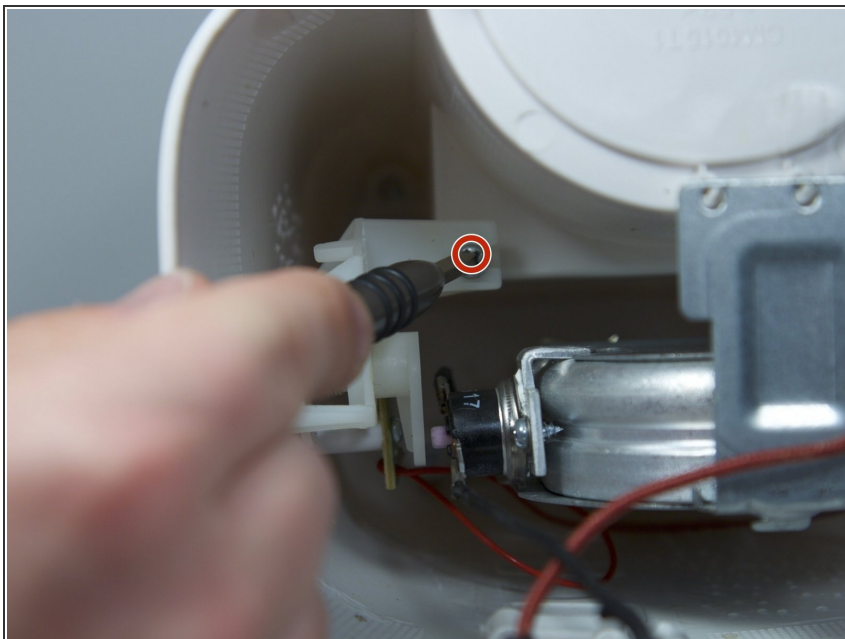
- Remove the three 16 mm tri-point screws from the base plate.

## Step 2



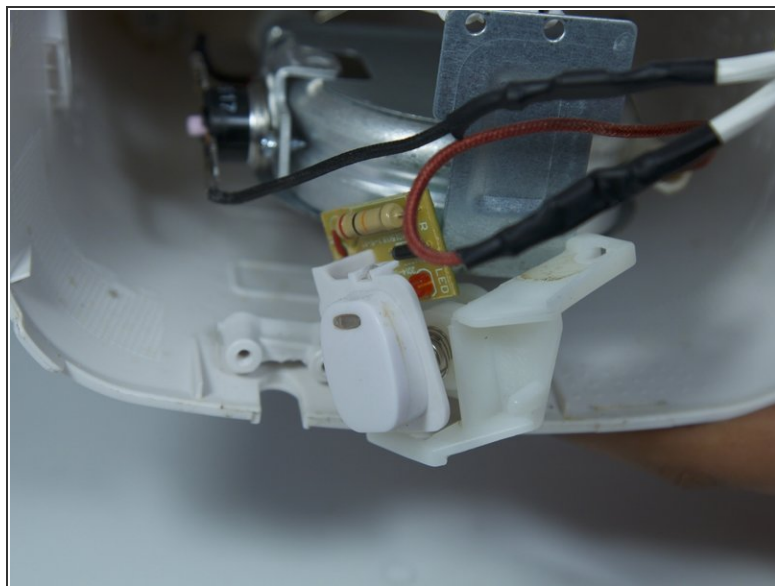
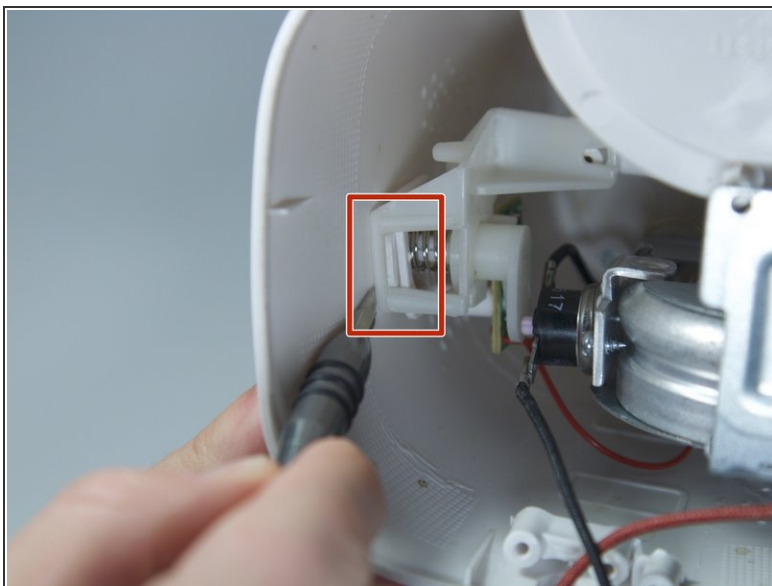
- Remove the base plate by pressing the plastic body away from the metal plate with your thumbs.

### Step 3 — Power Button



- Remove the 8mm Phillips screw that attaches the power button to the inside of the coffee maker.

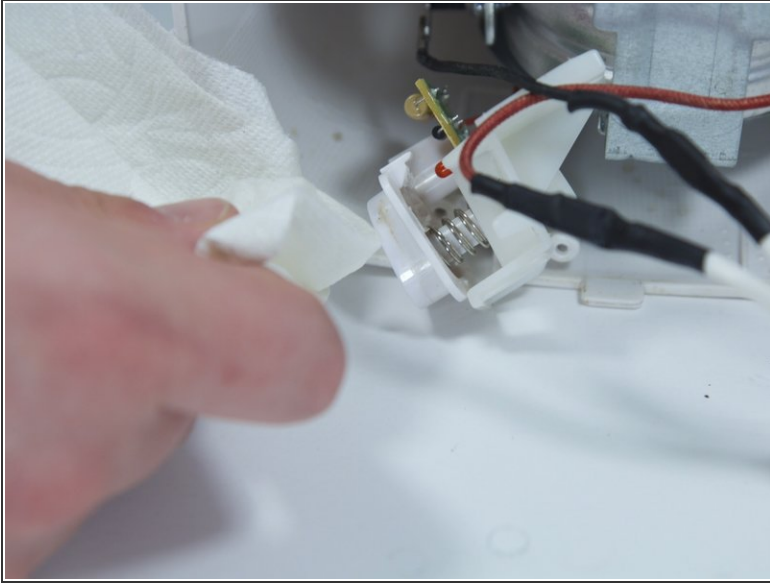
### Step 4



- Use a flat head screwdriver to pry the power button from its slot in the body of the device.
- ⓘ Make sure the tool is pressed securely under the plastic clip, in order to not break it.



## Step 5



- Clean both the button and its slot before replacing the power button.

To reassemble your device, follow these instructions in reverse order.