



Rocketfish RF-WHTIB-A Receiver LED Light Chip Replacement

This guide will help Rocketfish RF-WHTIB-A users replace a faulty LED light chip in the receiver.

Written By: Caitlin Charlton



INTRODUCTION

An LED light not working on the Rocketfish RF-WHTIB-A receiver does not necessarily mean the entire device is broken. It could indicate a problem with the LED light chip inside the device, which controls the LED light function. This guide will direct users step by step to replacing a faulty LED light chip.



TOOLS:

- [Phillips #1 Screwdriver](#) (1)
 - [Tweezers](#) (1)
-

Step 1 — How to Open the Rocketfish RF-WHTIB-A Receiver



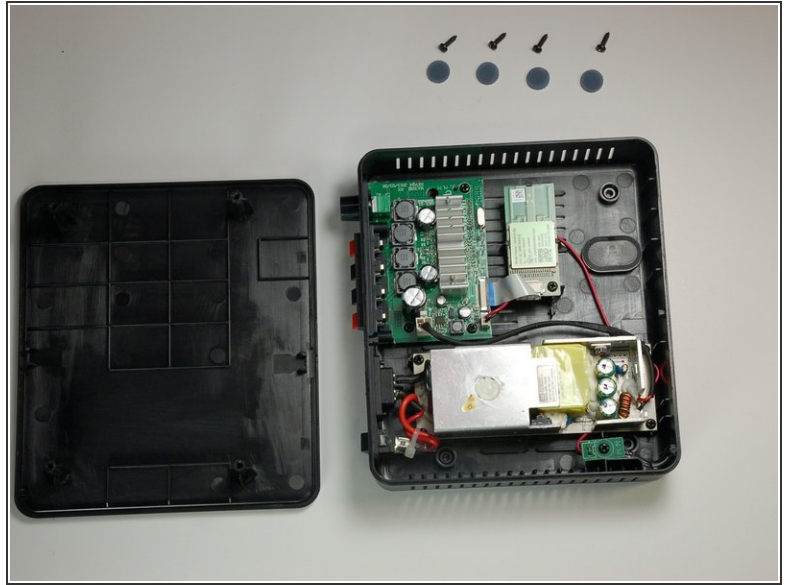
- Remove the 4 rubber tabs on the bottom side of the receiver.

Step 2



- Unscrew the four 12 mm screws on the bottom side of the receiver.
- ⓘ Use a Phillips #1 screwdriver for this step.

Step 3



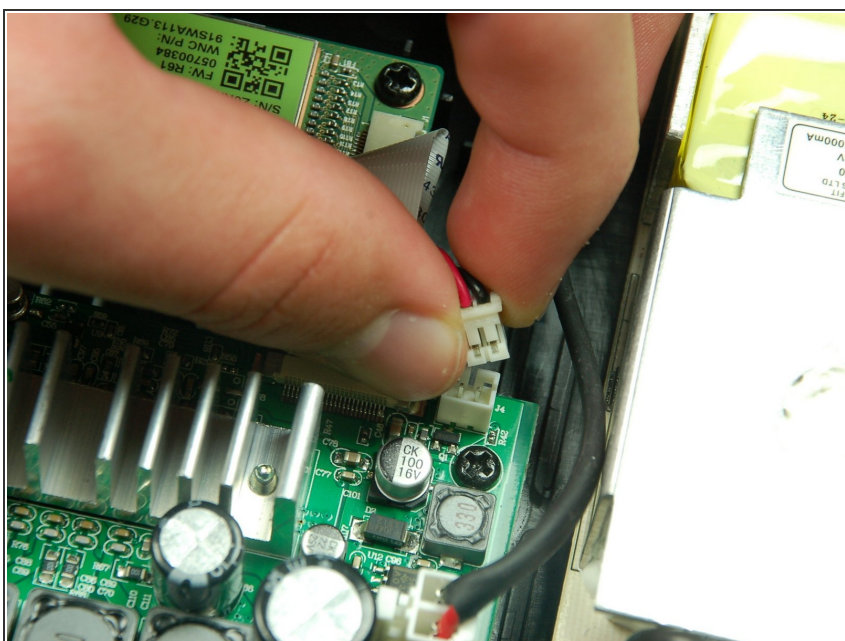
- Remove top casing from the receiver.
- ⓘ The receiver top casing is difficult to remove. Internal clasps may have to be broken in order to remove the top casing (this will not effect the device's function)

Step 4 — Receiver LED Light Chip



- One 10 mm screw is securing the LED 14.14 chip.
 - Unscrew the chip.
- i** Use a Phillips #1 Screwdriver for this step.

Step 5



- Using your fingers, gently pull the LED plug out of the mother board.

Step 6



- Gently feed the LED wire under the power supply to completely remove it from the sender.
- Remove the faulty LED 14.14 chip from the receiver.
- ⓘ *You may want to use the tweezers to help pull the LED wire out from beneath the power supply.*

To reassemble your device with the new LED light chip, follow these instructions in reverse order.

Once the receiver has been put back together, plug in the device and initiate the connection mode between the sender and receiver to ensure the new LED light chip has been properly assembled.