



Rocketfish RF-WHTIB-A Sender Speaker Input Terminal Replacement

This guide will help Rocketfish RF-WHTIB-A replace a faulty speaker's input terminal within the sender.

Written By: Caitlin Charlton



INTRODUCTION

If the speakers connected to the Rocketfish RF-WHTIB-A system are not producing sound or if the sound is unclear, it could indicate that you have an issue with the sender's speaker input terminal. This guide will show the users a step-by-step on how to remove and replace a faulty speaker's input terminal within the sender.



TOOLS:

- [Phillips #1 Screwdriver](#) (1)
- [Tweezers](#) (1)
- [Solder](#) (1)
- [Soldering Iron](#) (1)
- [Desoldering Braid](#) (1)
- [Staples](#) (1)

Step 1 — How to Open the Rocketfish RF-WHTIB-A Sender



- Remove the four rubber tabs from the bottom of the sender.
- ⓘ Pull hard to peel off the rubber tabs, as they are attached with adhesive.

Step 2



- Use a Phillips #1 screwdriver to unscrew the four 12 mm screws on the bottom of the device.

Step 3



- Flip the device over and remove the top casing from the sender.

Step 4 — Sender Wireless Audio Module Chip



- Use a Phillips #1 screwdriver to unscrew the 10 mm screw, securing the wireless audio module chip.

Step 5



- Use a Phillips #1 screwdriver to unscrew the 10 mm screw, securing the motherboard.

Step 6



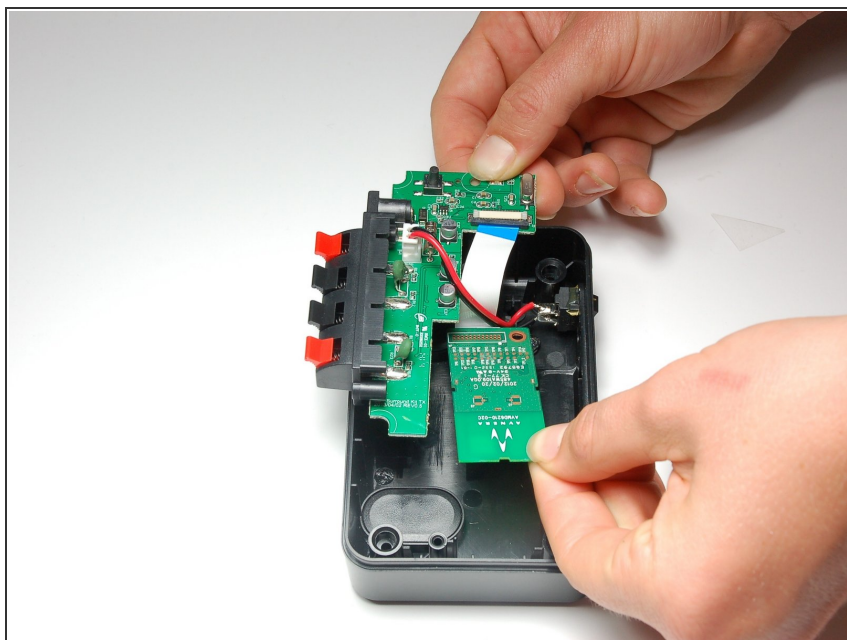
- Use a Phillips #1 screwdriver to unscrew the two 10 mm screws located on either side of the speakers.
- Secure the front speaker input terminal to release the motherboard.

Step 7



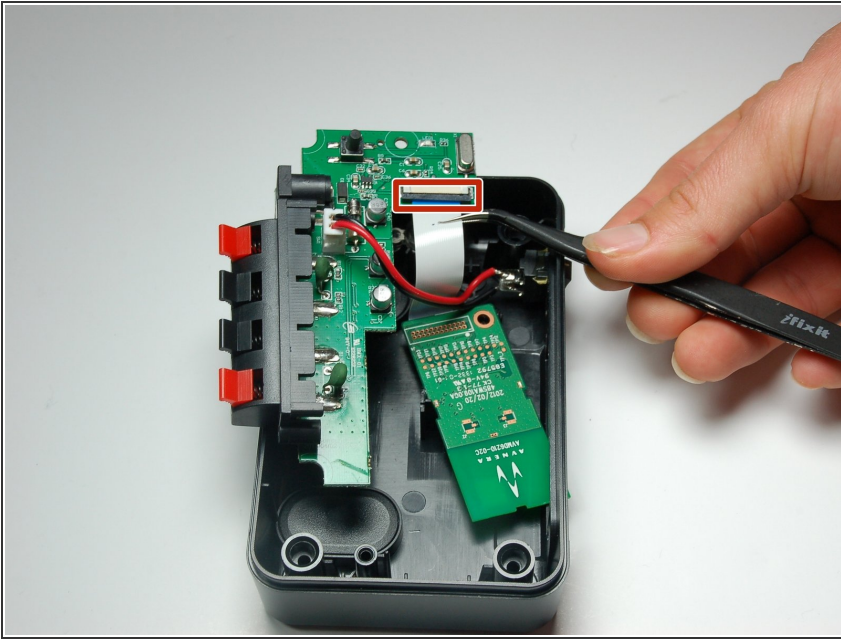
- Using both thumbs, push the front speaker input terminal back towards the inside part of the device.

Step 8



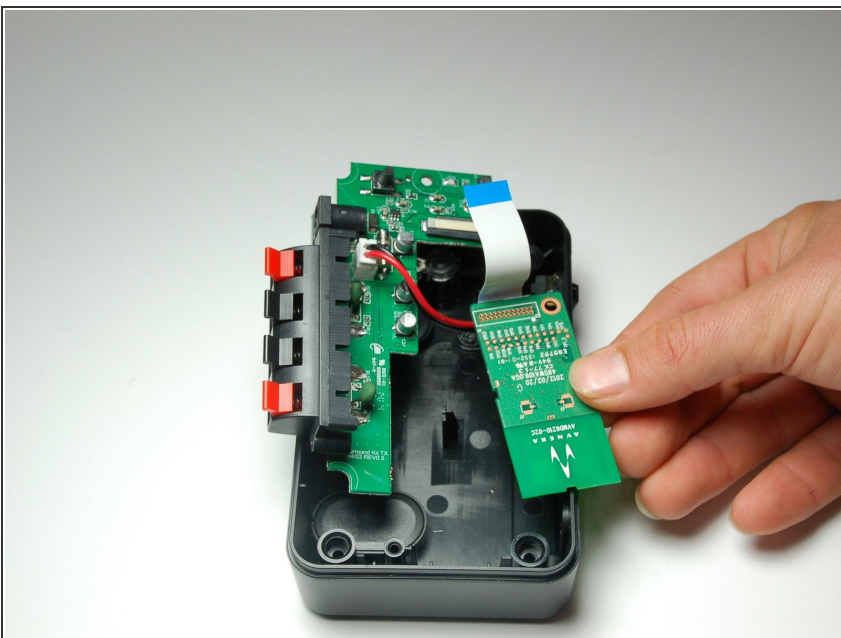
- Flip over the motherboard and wireless audio module chip.

Step 9



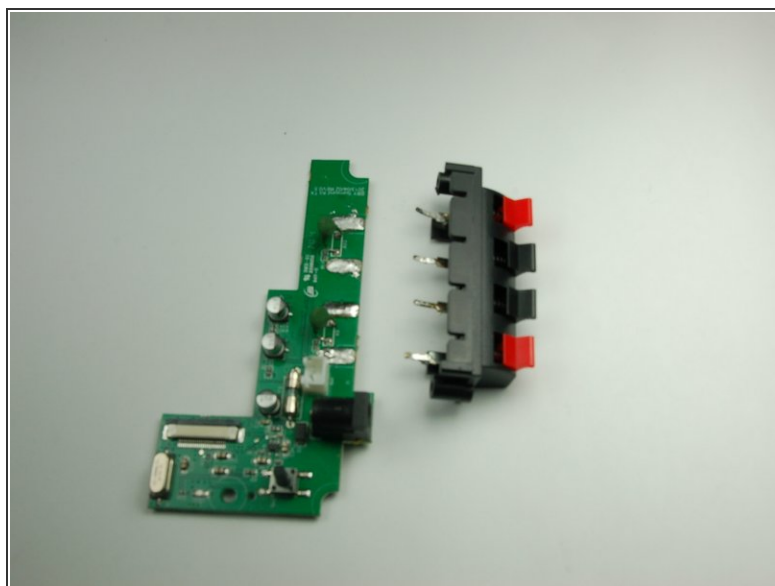
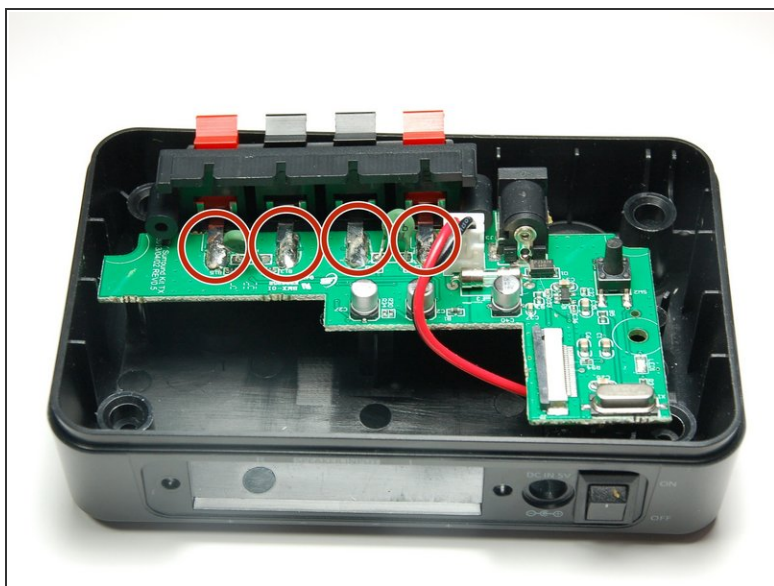
- Gently slide the black retaining flap back, securing the ribbon wire gently away from the white bar.
- ❗ There should only be a small separation between the white bar and the black retaining flap.
- ❗ Tweezers are recommended for this step.

Step 10



- Using your fingers, pull the ribbon wire out from the black retaining flap in order to completely disconnect the wireless audio module chip.

Step 11 — Sender Speaker Input Terminal



- Desolder the four metallic clasps that attach the panel to the motherboard.

ⓘ For soldering techniques, follow the step in [iFixit's soldering guide](#).

⚠ Do not attempt to solder if you are inexperienced.

To attach a new speaker input terminal, follow these instructions in reverse order.