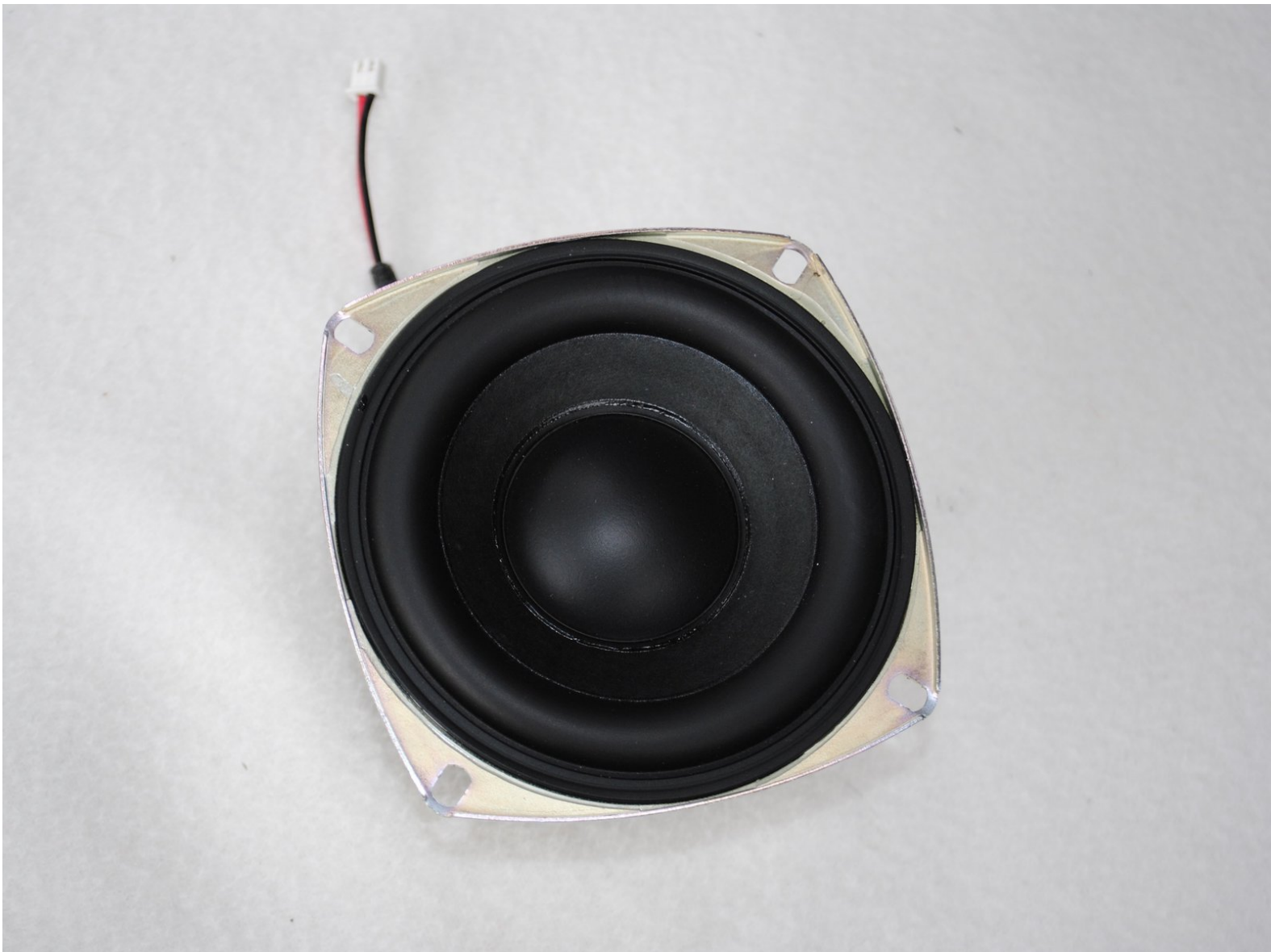




# Rocketfish RF-WSP313 Speaker Replacement

This guide will allow you to replace the speaker component.

Written By: Kara Falknor



---

## INTRODUCTION

This guide will show you how to remove the components of the product necessary to access the bluetooth speaker, remove it, and replace it with a new one.

---

### TOOLS:

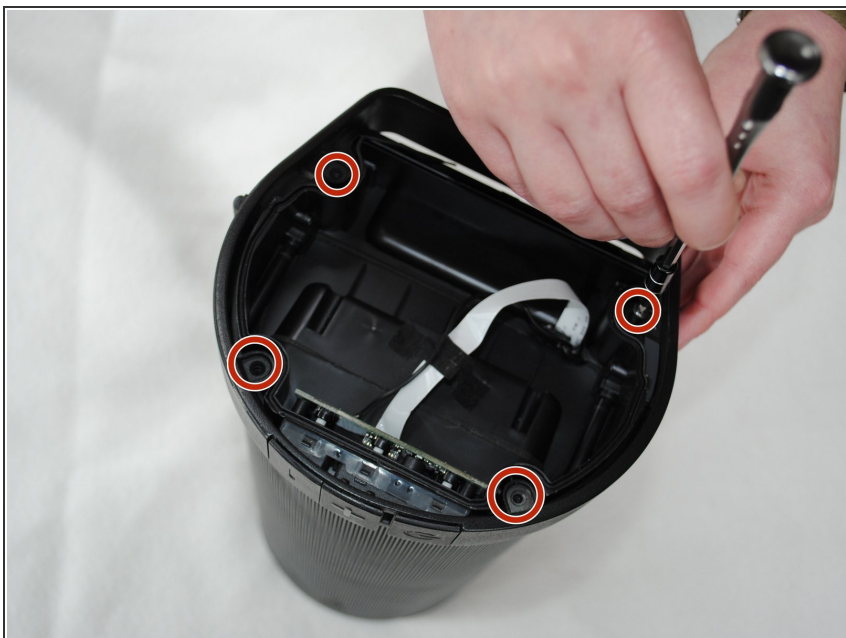
- [Phillips #1 Screwdriver](#) (1)
  - [Metal Spudger](#) (1)
  - [ESD Safe Tweezers Blunt Nose](#) (1)
-

## Step 1 — Speaker



- Using the metal spudger, remove the outer cap from the top of the device.

## Step 2



- Using a Phillips # 1 screwdriver, remove the four 1.1 cm flathead screws attaching the metal ring to the top of the device.

### Step 3



- Remove the ring and set aside.

### Step 4



- Using the metal spudger, remove the cap from the bottom of the device.



## Step 5



- Using a Phillips # 1 screwdriver, remove the four 1.1 sm screws attaching the metal ring to the bottom of the device.

## Step 6



- Remove the ring and set aside.

## Step 7



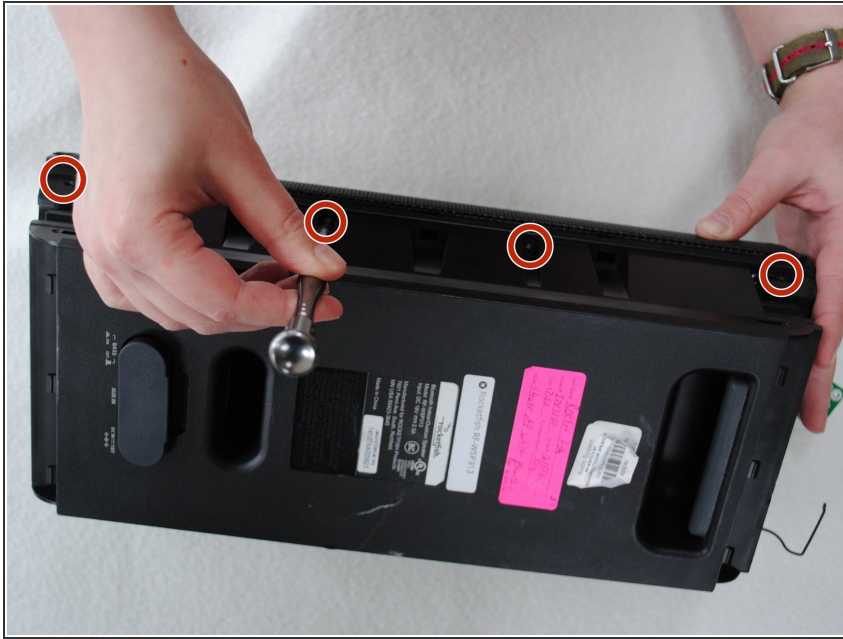
- Using a Phillips # 1 screwdriver, remove the four 1 cm screws from the outside panel. You will do this for each panel; it does not matter which side you start with.

## Step 8



- Using the metal spudger, pry off the side panel. Repeat this step on the other side panel.

## Step 9



- Using a Phillips #1 screwdriver, remove the four 1.1 cm flathead screws from the side of the device. Repeat this step on the other side of the device.

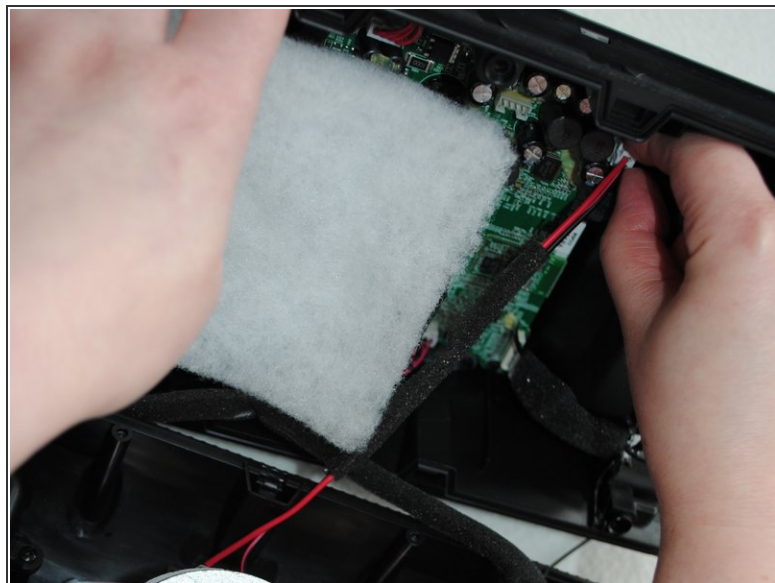
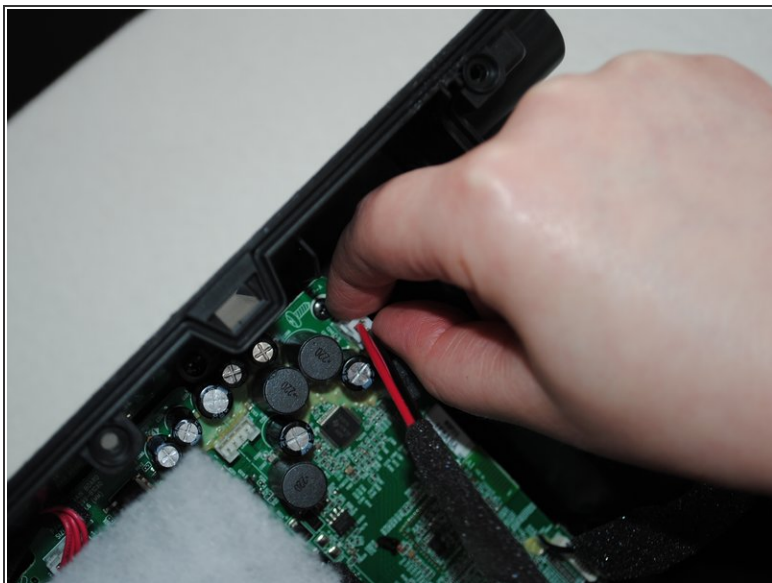
## Step 10



- Using the metal spudger, open the device.



## Step 11



- Using your fingers (or a pair of tweezers), disconnect the speaker cord from its socket.

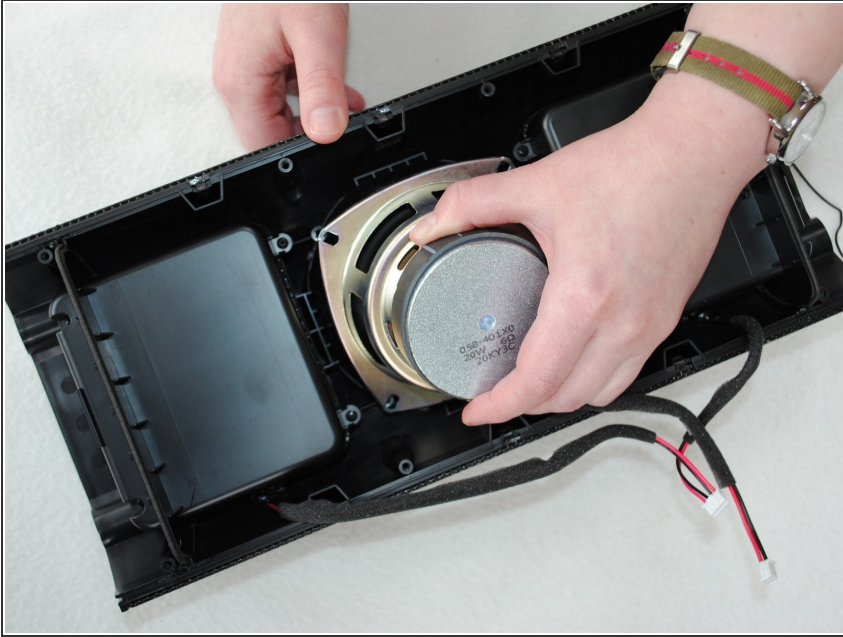
## Step 12



- Using a Phillips #1 screwdriver, remove the four 1.2 cm pan head screws surrounding the speaker.



## Step 13



- Remove the speaker from the device.

To reassemble your device, follow these instructions in reverse order.