



Roku 2 Case Replacement

This guide will demonstrate device disassembly, and how to replace the device case.

Written By: Eric Rawls



INTRODUCTION

Replace the case of the device.



TOOLS:

- [iOpener](#) (1)
 - [Phillips #000 Screwdriver](#) (1)
 - [iFixit Opening Tools](#) (1)
-

Step 1 — Case



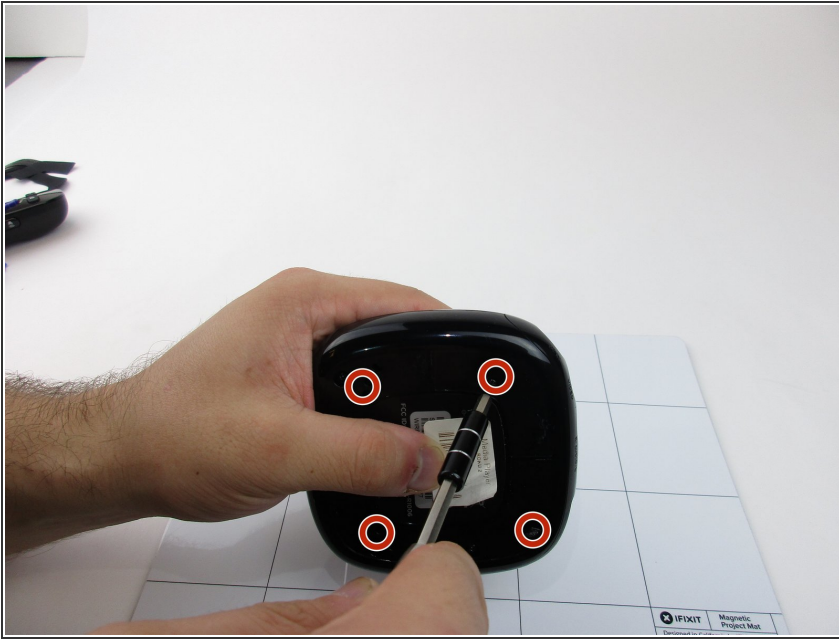
- Heat up the iOpener for 30 seconds in the microwave and place across rubber pads on the back of the device.
- Note: It may take several heats, left for a minute at a time, to loosen the glue.

Step 2



- Gently use the plastic opening tool to pry the rubber pads off.

Step 3



- Use the 000 phillips to remove the screws found under all four of the rubber pads.

Step 4



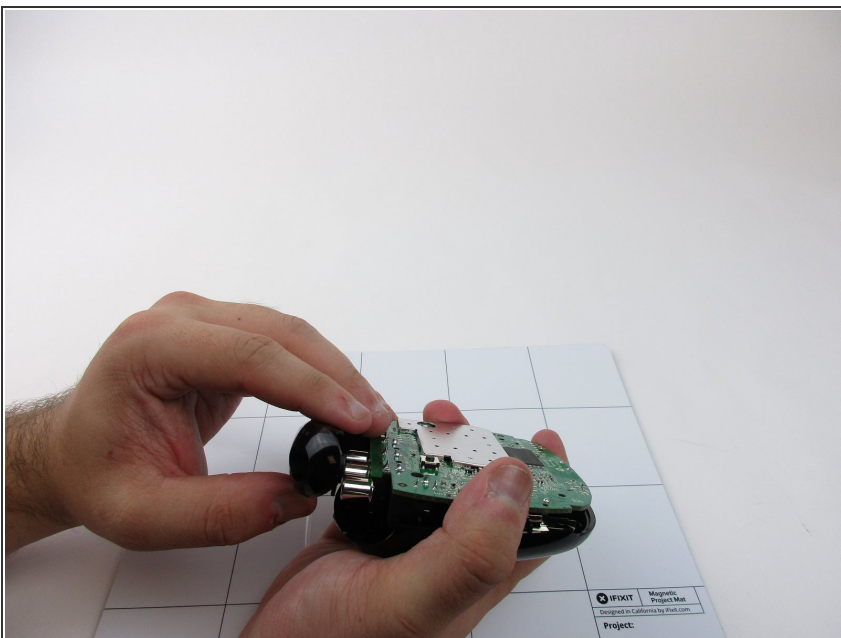
- Gently remove the under side of the device.

Step 5



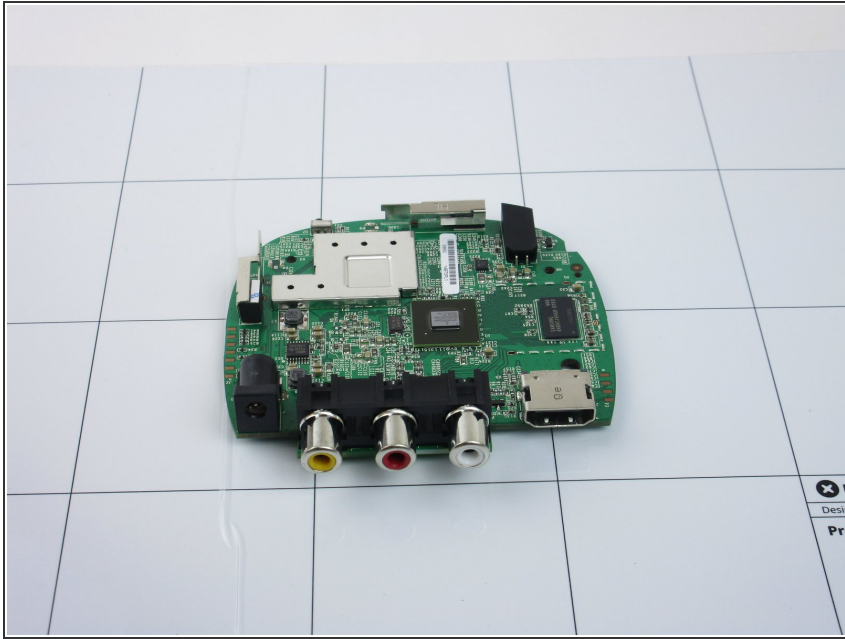
- Remove the middle component that is held in place by the top and bottom of the device.

Step 6



- Remove the cover over the A/V ports on the front of the device.

Step 7



- Remove the board from the plastic enclosure and put the board into the replacement enclosure.

To reassemble your device, follow these instructions in reverse order.