



# Roku 3 Motherboard Replacement

Replace the motherboard in your Roku 3.

Written By: Samantha Miller



---

## INTRODUCTION

All individual parts can be replaced on the motherboard as well. Please see additional guides if needed.



### TOOLS:

- [Screwdriver Hex 1.3 Head](#) (1)
-

## Step 1 — Motherboard



- Place the Roku 3 on the table face down and orient it so you can correctly read the writing.

## Step 2



- Pull back the rubber protection in the top right corner to locate the screw.
- Repeat with the bottom right corner and bottom left corner.

## Step 3



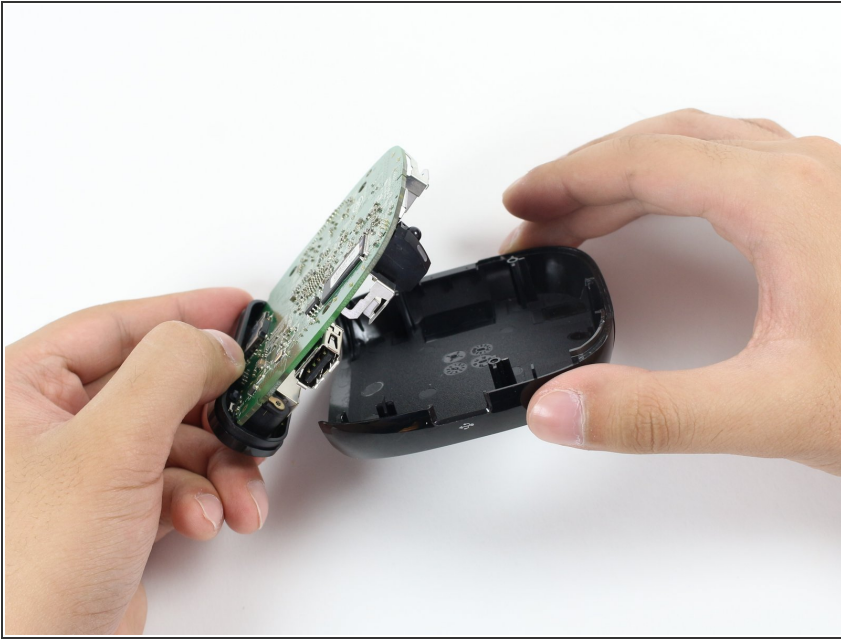
- Remove the 9 mm screws from the three corners with a Hex 1.3 Screwdriver.

## Step 4



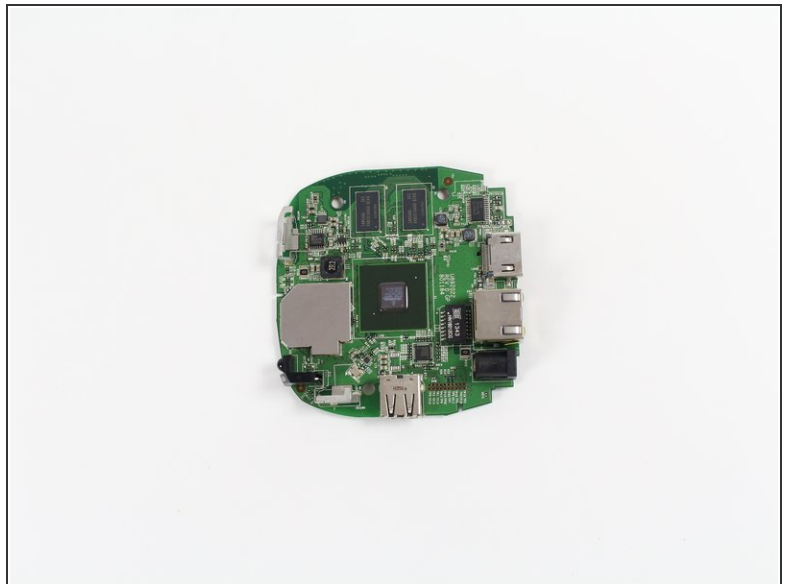
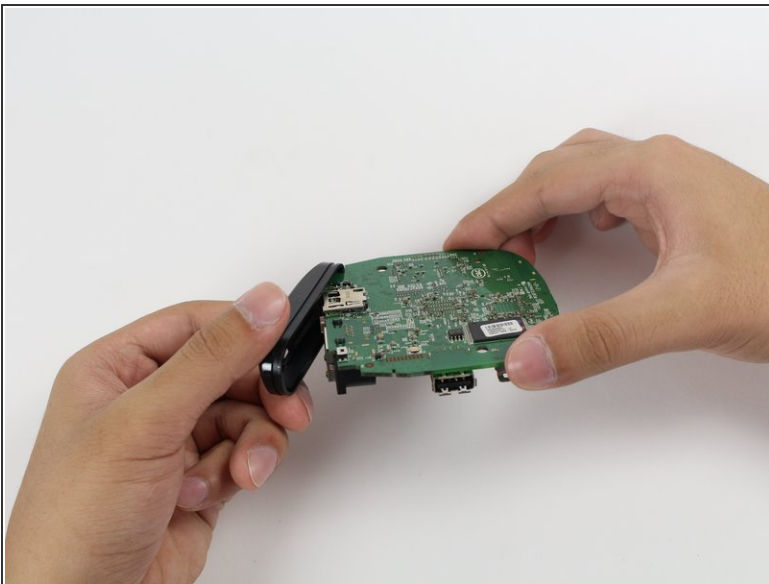
- Open the device by gently lifting the bottom half away from the top half of the device.

## Step 5



- Use your fingers to carefully lift the motherboard from the top half of the device.

## Step 6



- Pull away the IO shield from the motherboard using your hands.

To reassemble your device, follow these instructions in reverse order.