



# Roku N1000 Motherboard Replacement

This guide will show a disassembly of the main body to the motherboard.

Written By: Ryan Foley



---

## INTRODUCTION

A Philips Head screwdriver and a prying tool will be required. Tweezers are optional, but helpful. Opening the inside of the Roku does come with risk of damaging the clips holding the bottom of the case together



### TOOLS:

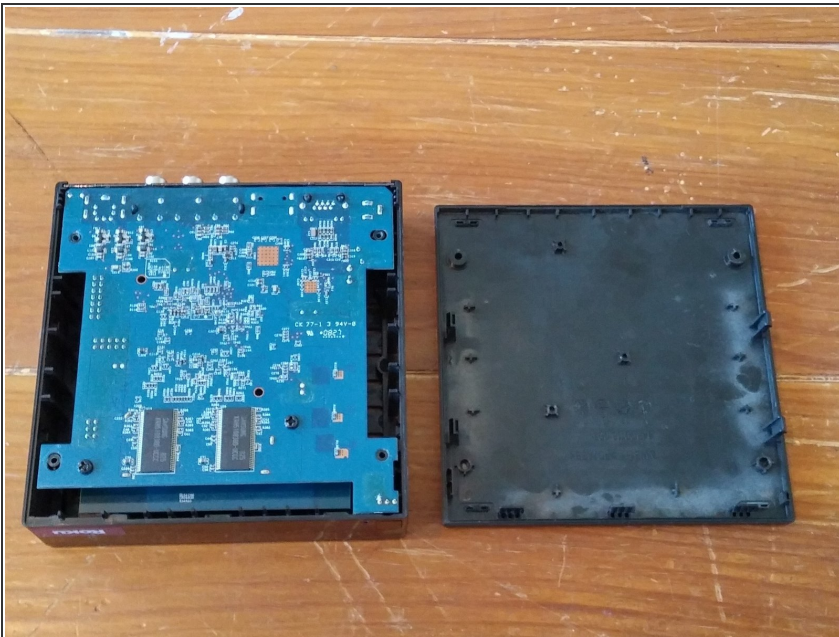
- [iFixit Opening Tools](#) (1)
  - [Phillips #0 Screwdriver](#) (1)
-

## Step 1 — Remove Bottom Screws



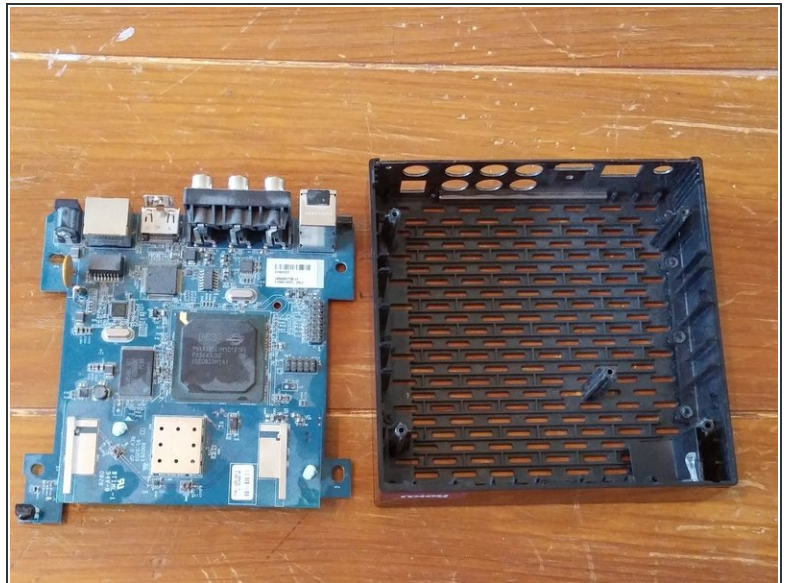
- Remove the Philips head screws on the bottom side of the Roku box.

## Step 2 — Bottom Half of Case



- Starting from the back of the box, begin to remove the bottom of the Roku box using the prying tool.
- Inside the Roku box on the bottom portion of the case, there are two tabs on both the left and right side.
- Carefully pop the tabs out and lift the side with the prying tool.

## Step 3 — Removing the Motherboard



- Remove the two Philips screws on the motherboard and the screw on the back panel of the Roku box.
- Carefully lift the Motherboard out of the Roku box.

To reassemble your device, follow these instructions in reverse order.