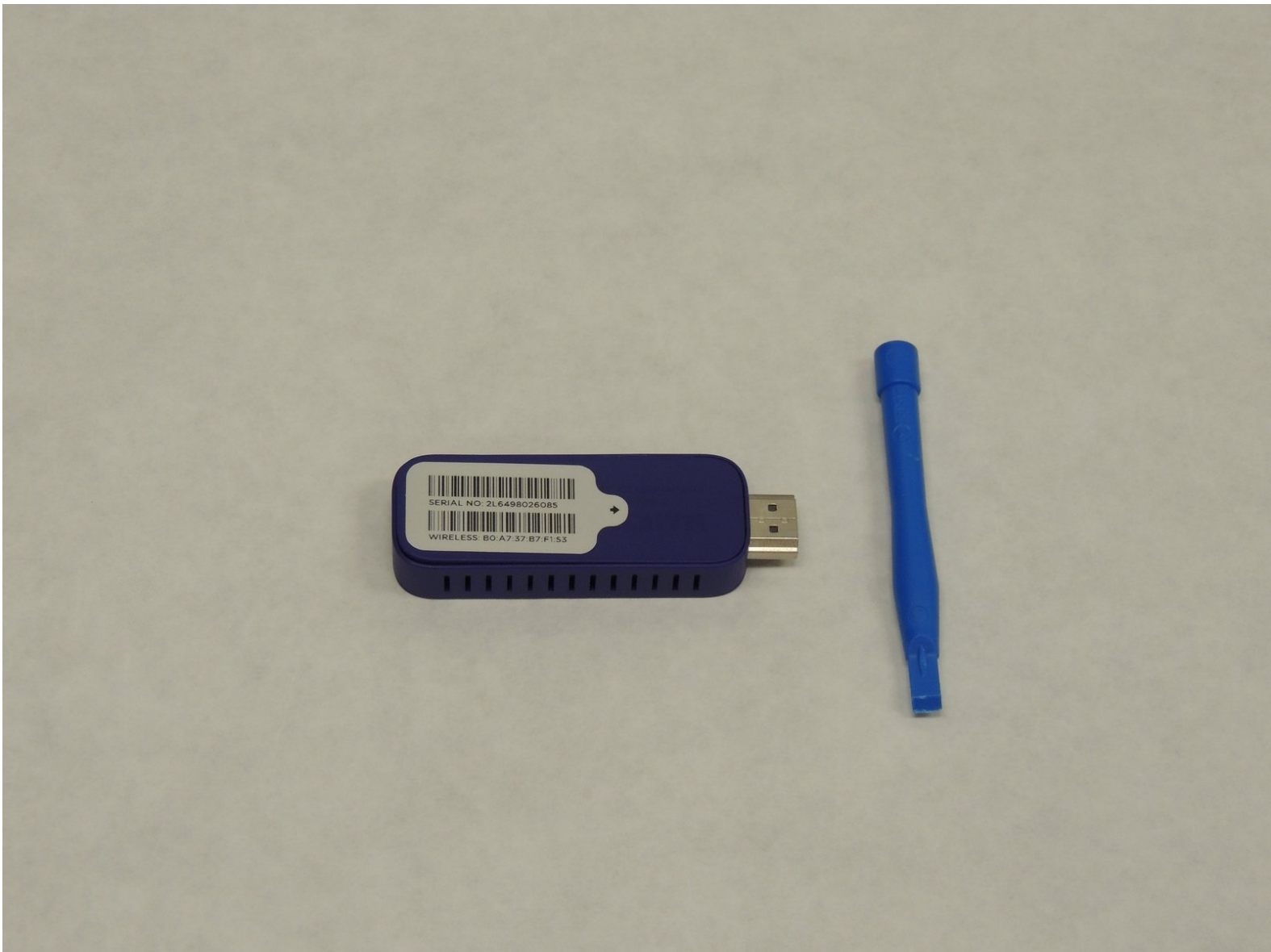




Roku Streaming Stick Motherboard Port replacement

This guide will allow you to replace the HDMI and Micro USB ports on the motherboard of the Roku Streaming Stick.

Written By: Andy Miller



INTRODUCTION

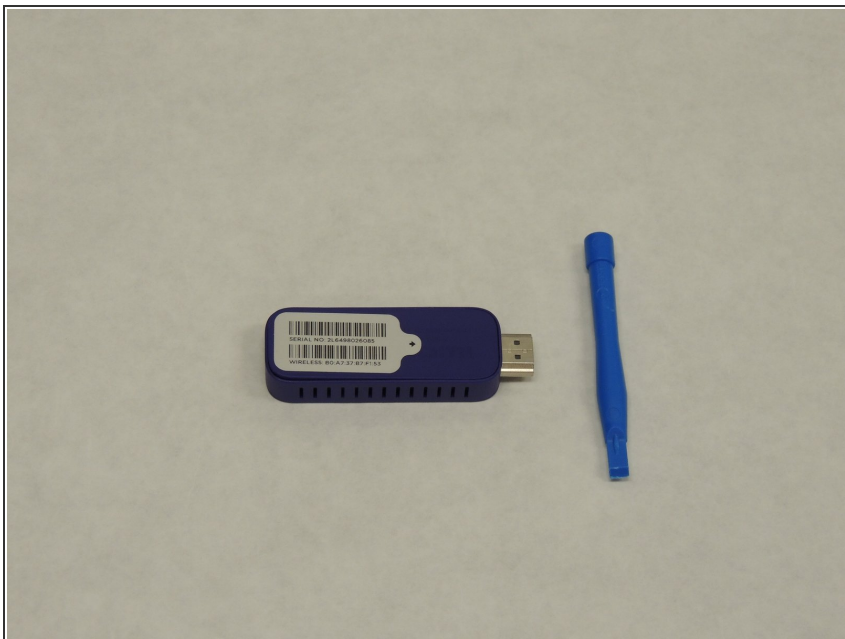
There were over 10 million Roku Streaming Sticks sold in 2014 within the United States alone when it was released. This guide will show you how to repair and replace the ports on one of these devices.

As a precaution, this guide will require a soldering iron or gun.

TOOLS:

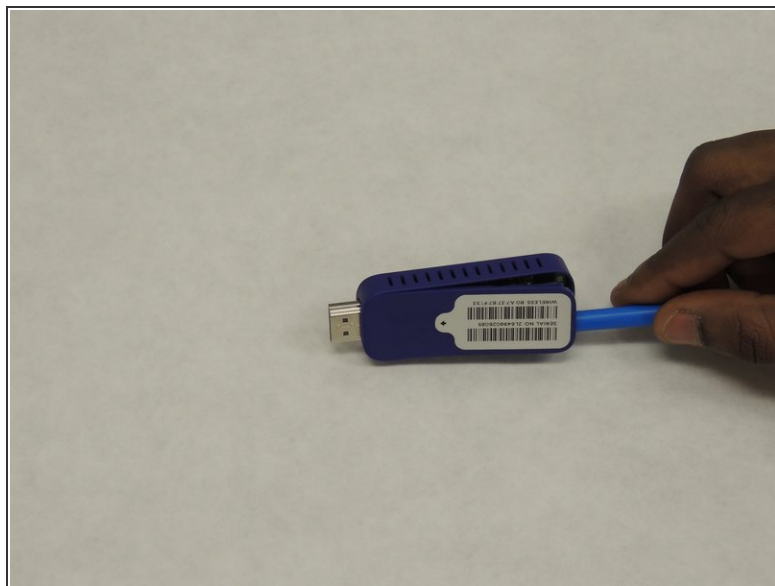
- [Soldering Iron](#) (1)
 - [iFixit Opening Tools](#) (1)
 - [Tweezers](#) (1)
-

Step 1 — Roku Streaming Stick Motherboard Port



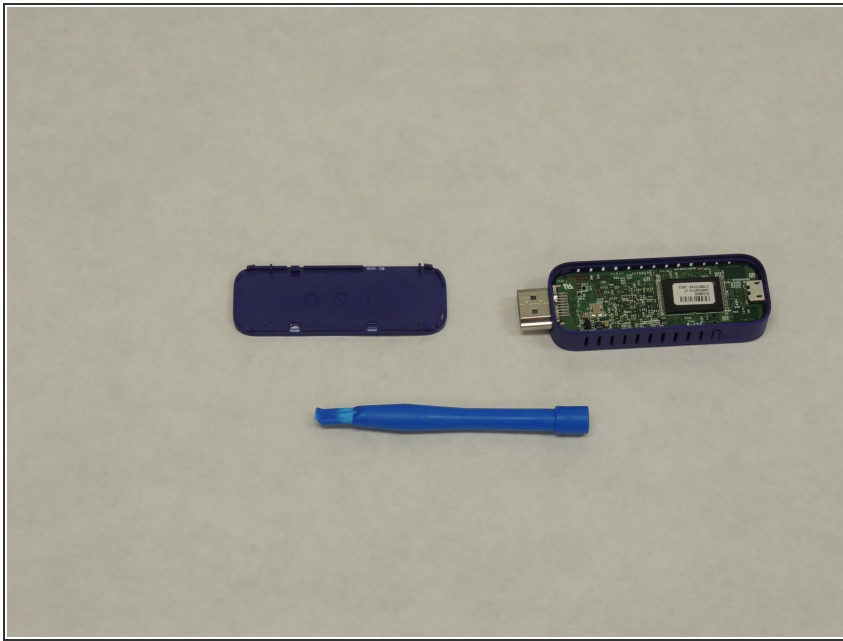
- Grab the blue plastic opening tool to open the Roku Streaming Stick 3500R.

Step 2



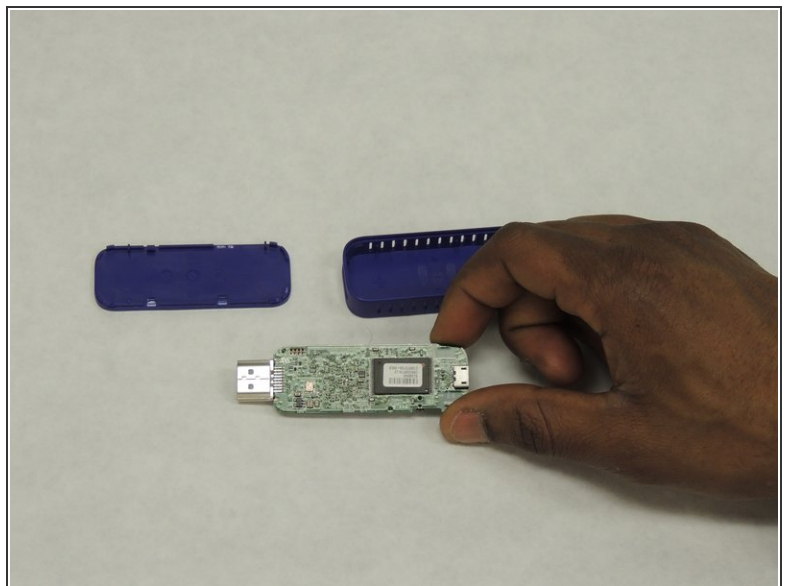
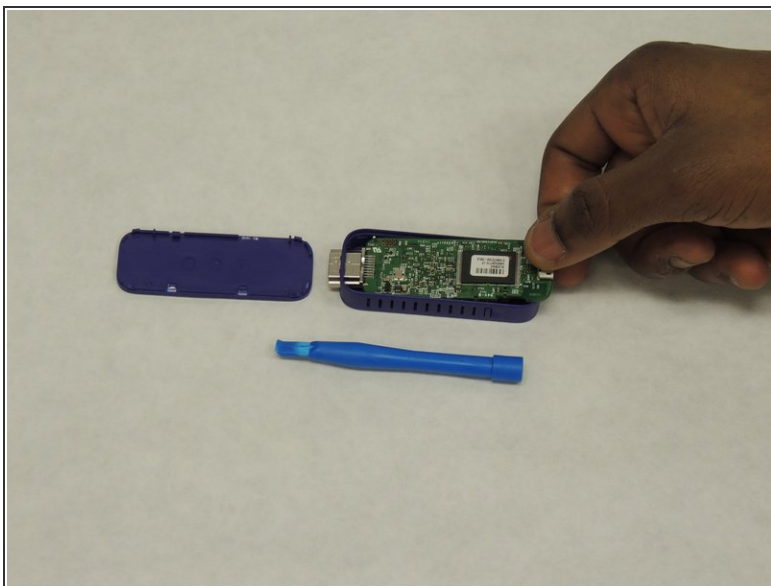
- Place the blue plastic opening tool into one of the cracks on the back of the Roku to pop open the Roku Streaming Stick 3500R. Be careful not to break anything while removing the back.

Step 3



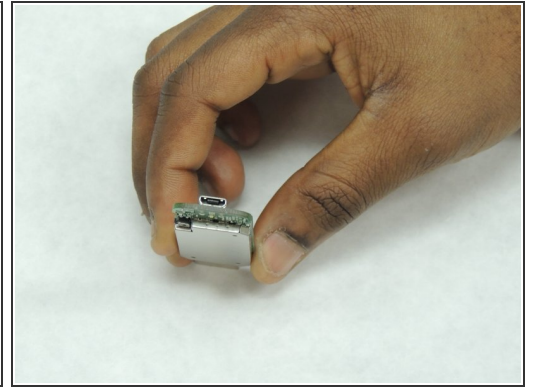
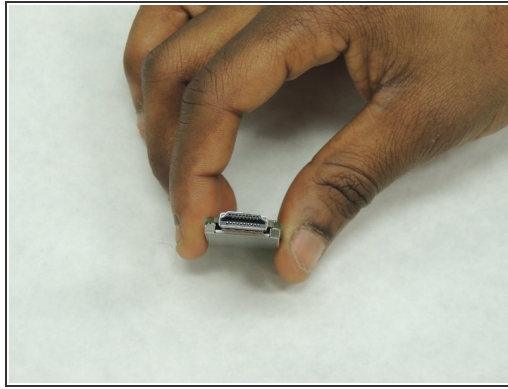
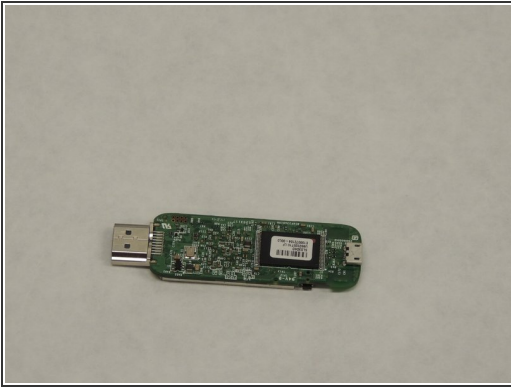
- Once you have removed the cover, you can now access the motherboard of the Roku Streaming Stick.

Step 4



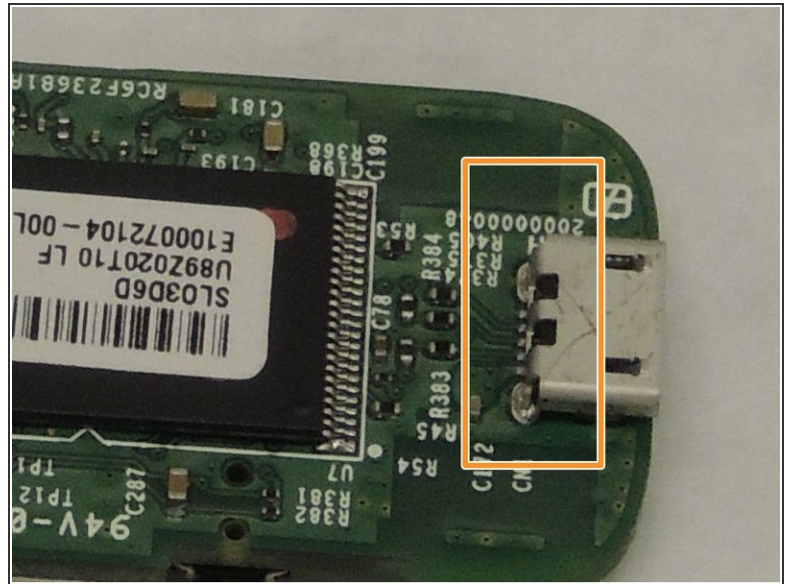
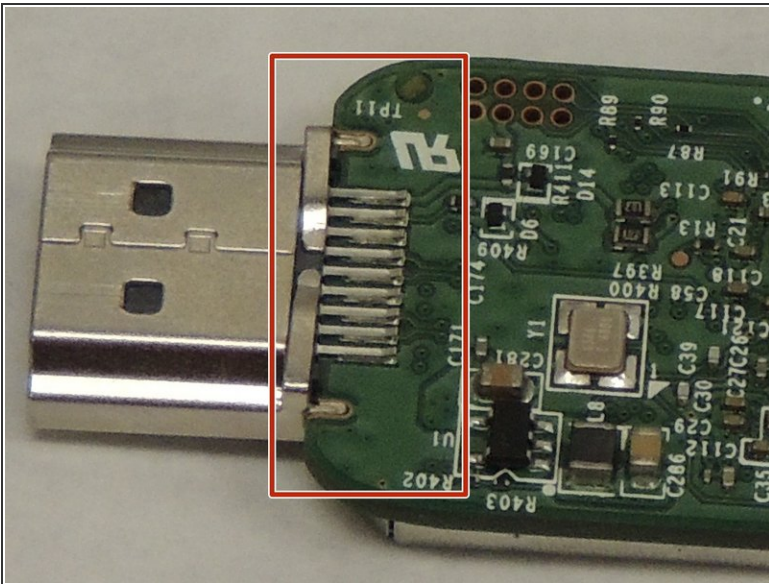
- Remove the motherboard by grabbing a hold of the micro-usb port, or you can also use tweezers to grab a hold of it and pull it out. But be careful with where you grab the motherboard.

Step 5



- Once you identify the HDMI port and the micro-usb port, you can investigate to see which port may be damaged.

Step 6



- Once you have identified the problem you can then desolder the points at the HDMI as highlighted, or at the micro-usb ports.

⚠ If the soldering gun, or iron is set too high you then run the risk of destroying the motherboard altogether, or even damaging the wireless antennas.

If the replacement of the motherboard does not work, another part may need to be replaced.

For reassembly, follow instructions in reverse order.