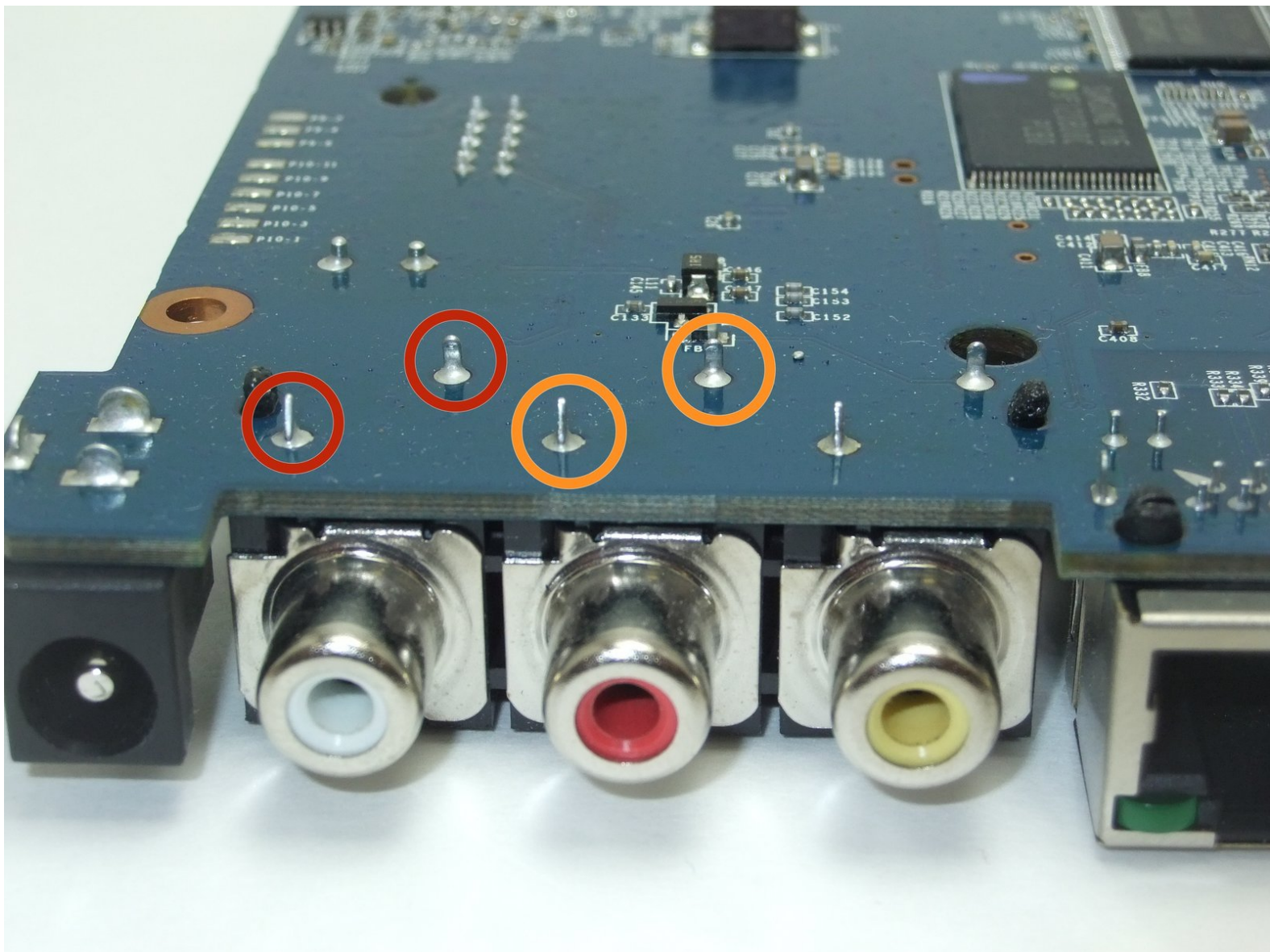




Roku XD 2050X Audio Port Replacement

Use this guide to replace the left or right audio ports in your Roku 2050X.

Written By: William



INTRODUCTION

Use this guide to replace a damaged or malfunctioning audio port on the Roku XD 2050X. To complete this guide, you will need to disassemble your device and use a soldering iron to replace the port.



TOOLS:

- [Phillips #1 Screwdriver](#) (1)
 - [Spudger](#) (1)
-

Step 1 — Case



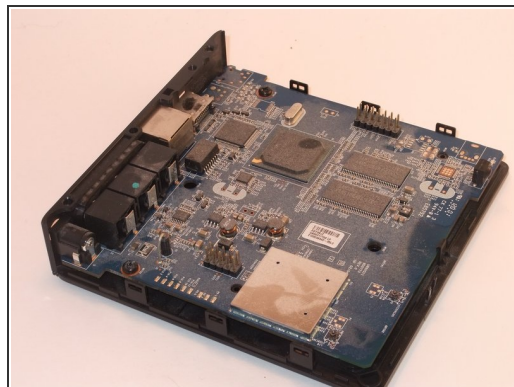
- ⚠ Ensure the Roku XD is unplugged.
- ⚠ Take care when handling components. Circuit boards, soldering points, and other areas may have sharp points.
- Turn the device upside down.
- Remove the two rubber pads using a plastic spudger.

Step 2



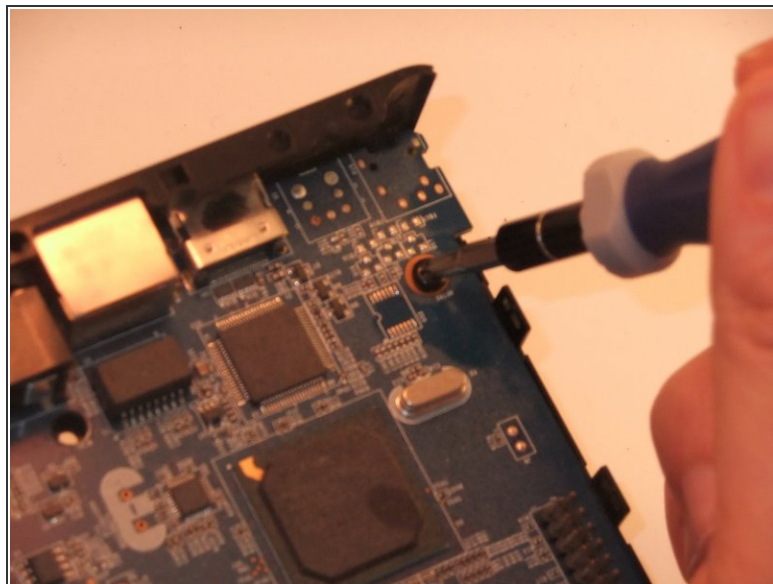
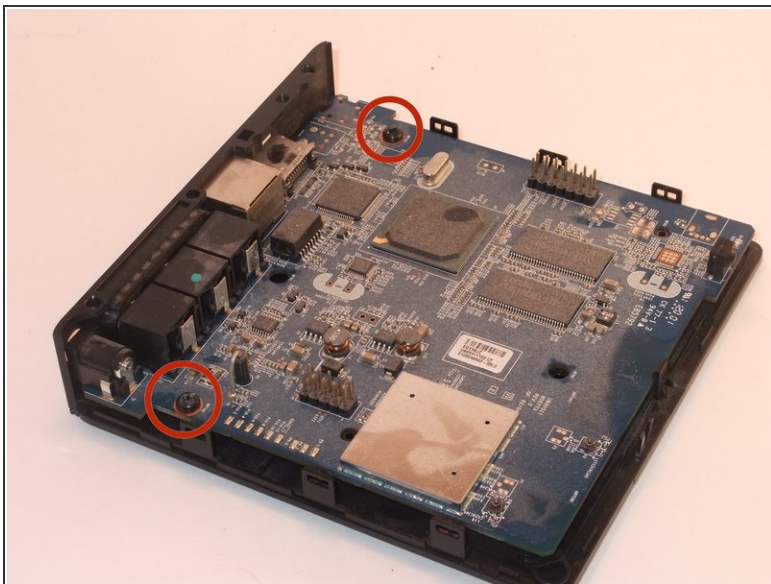
- Remove the two Phillips #1 9mm pan-head screws.

Step 3



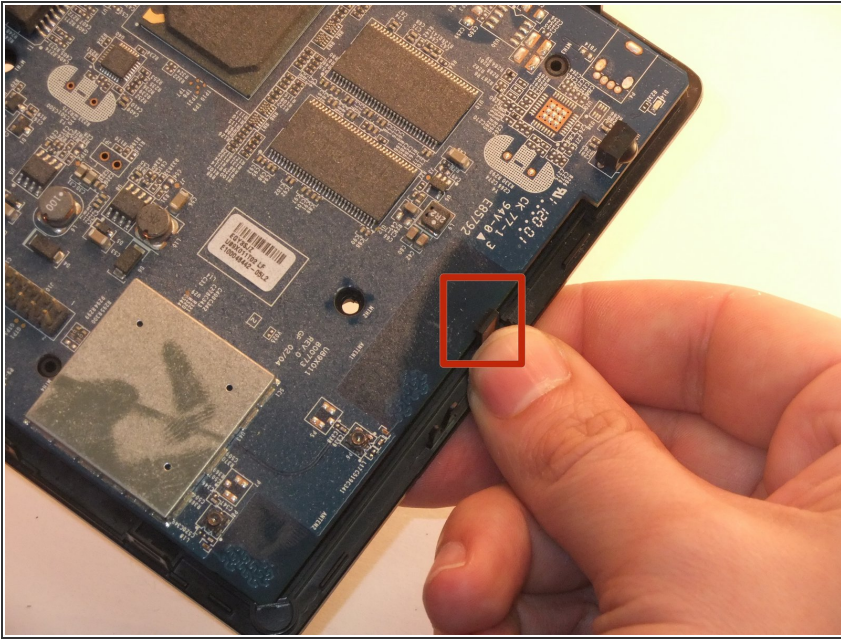
- Insert spudger between upper and lower frame underneath the port access.
- Guide spudger around to loosen upper and lower frame to pry frame apart.
- Gently remove upper frame.

Step 4



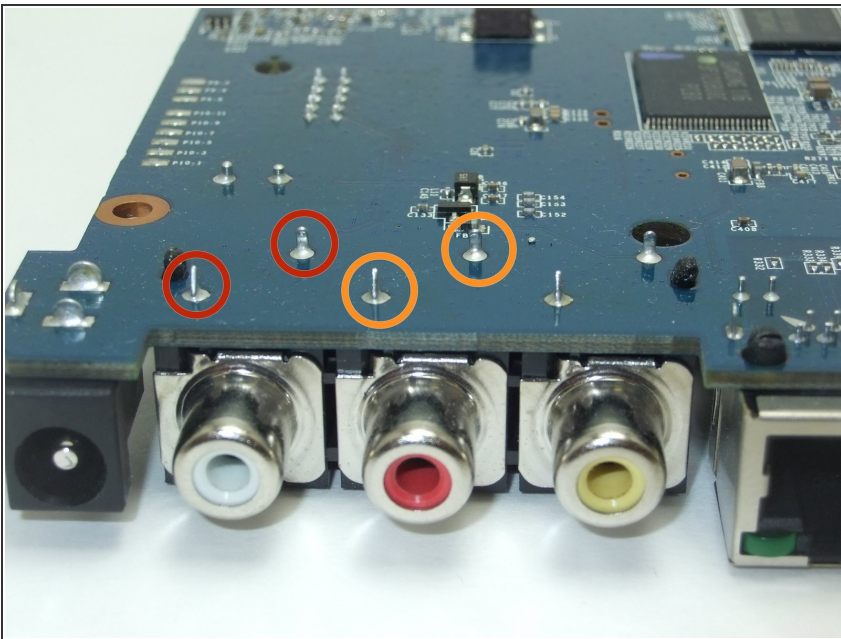
- Remove the two Phillips #1 8mm pan-head screws.

Step 5



- On the side of the board opposite the ports, find and tilt back the tab securing the board in place.
- Lift the motherboard out of the lower frame.

Step 6 — Audio Port



- Desolder the leads for the audio port that you wish to replace.
- Left audio port leads are circled in red.
- Right audio port leads are circled in orange.
- Remove the audio port from board.
- For help with soldering view the [iFixit soldering guide](#).

To reassemble your device, follow these instructions in reverse order.