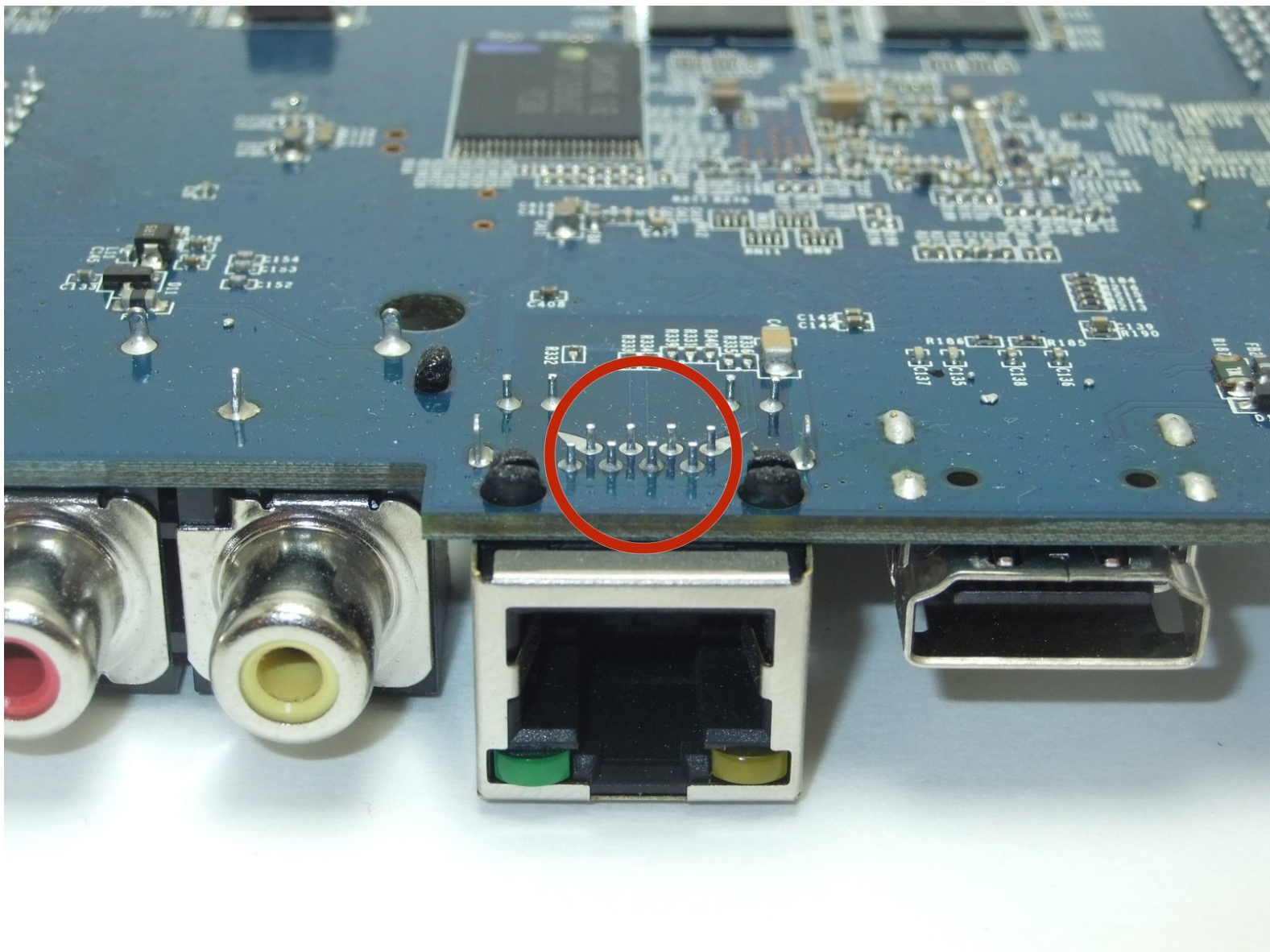




Roku XD 2050X Ethernet Port Replacement

Use this guide to replace the Ethernet port in your Roku 2050X.

Written By: William



INTRODUCTION

In this guide we will show you how to replace the Ethernet port on your Roku XD 2050X. To complete this guide, you will need to disassemble your device and use a soldering iron to replace the port.

TOOLS:

- [Small Needle Nose Pliers](#) (1)
 - [Phillips #1 Screwdriver](#) (1)
 - [Spudger](#) (1)
 - [Soldering Iron](#) (1)
-

Step 1 — Case



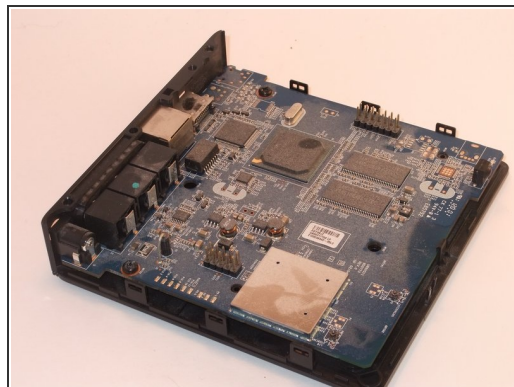
- ⚠ Ensure the Roku XD is unplugged.
- ⚠ Take care when handling components. Circuit boards, soldering points, and other areas may have sharp points.
- Turn the device upside down.
- Remove the two rubber pads using a plastic spudger.

Step 2



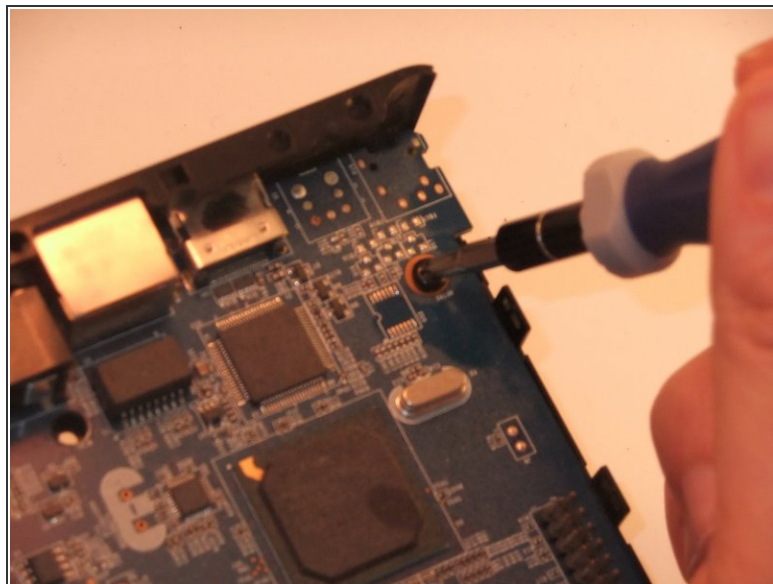
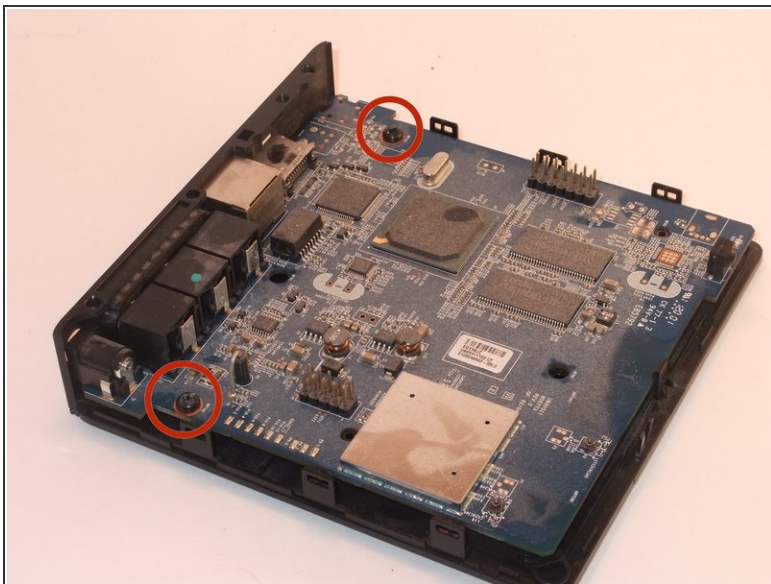
- Remove the two Phillips #1 9mm pan-head screws.

Step 3



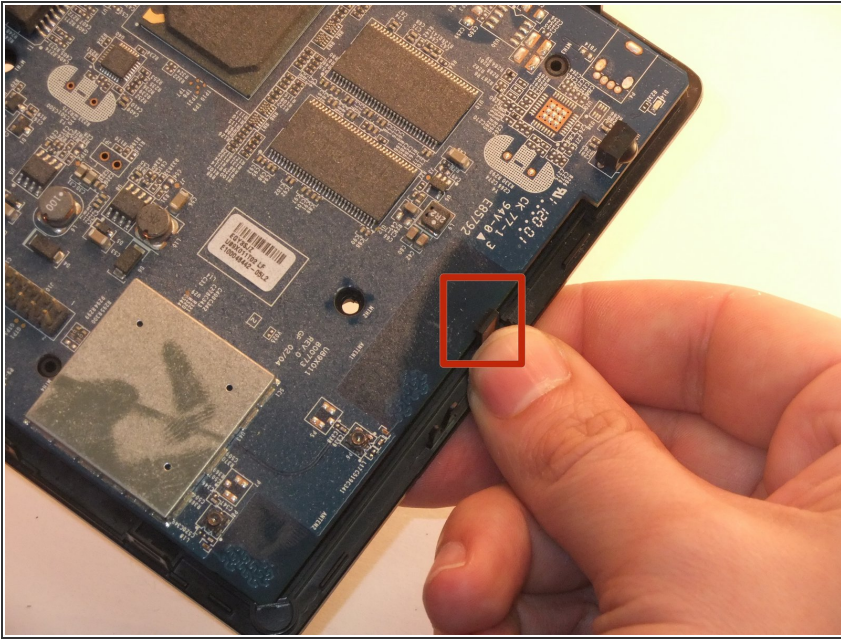
- Insert spudger between upper and lower frame underneath the port access.
- Guide spudger around to loosen upper and lower frame to pry frame apart.
- Gently remove upper frame.

Step 4



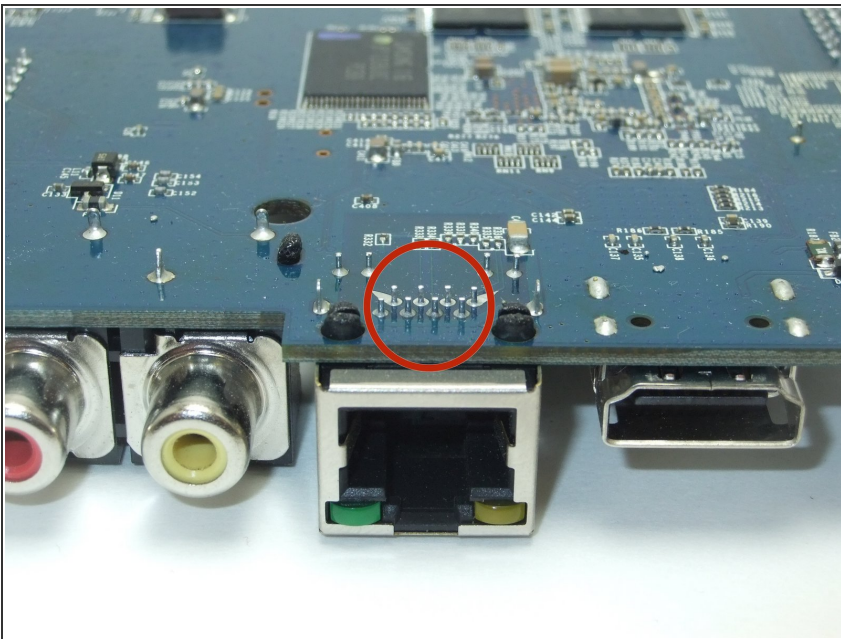
- Remove the two Phillips #1 8mm pan-head screws.

Step 5



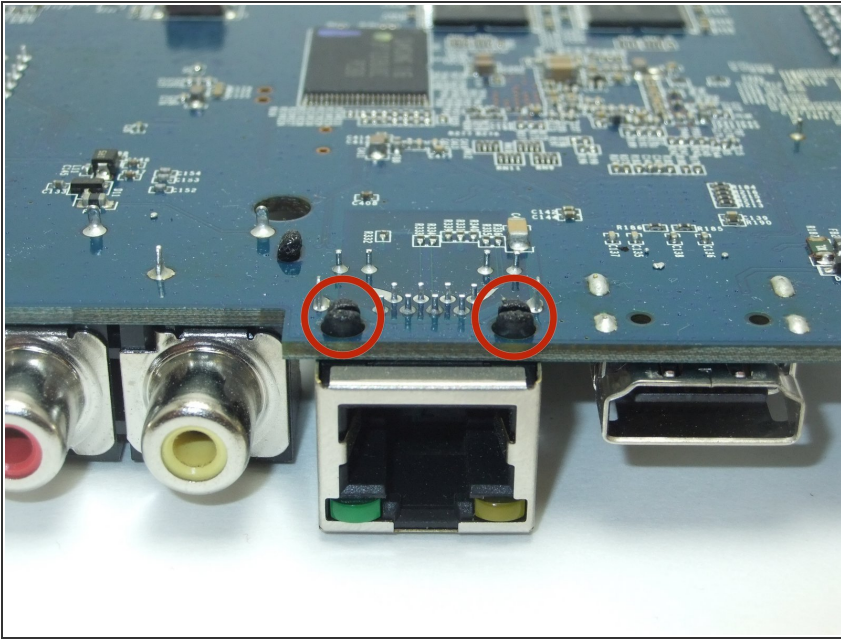
- On the side of the board opposite the ports, find and tilt back the tab securing the board in place.
- Lift the motherboard out of the lower frame.

Step 6 — Ethernet Port



- Desolder the 8 contact points.
- For help with soldering view the iFixit [soldering guide](#).

Step 7



- Use pliers to pinch the two anchor points and gently press them through the board to separate ethernet port.
- Remove the Ethernet port from board.

To reassemble your device, follow these instructions in reverse order.