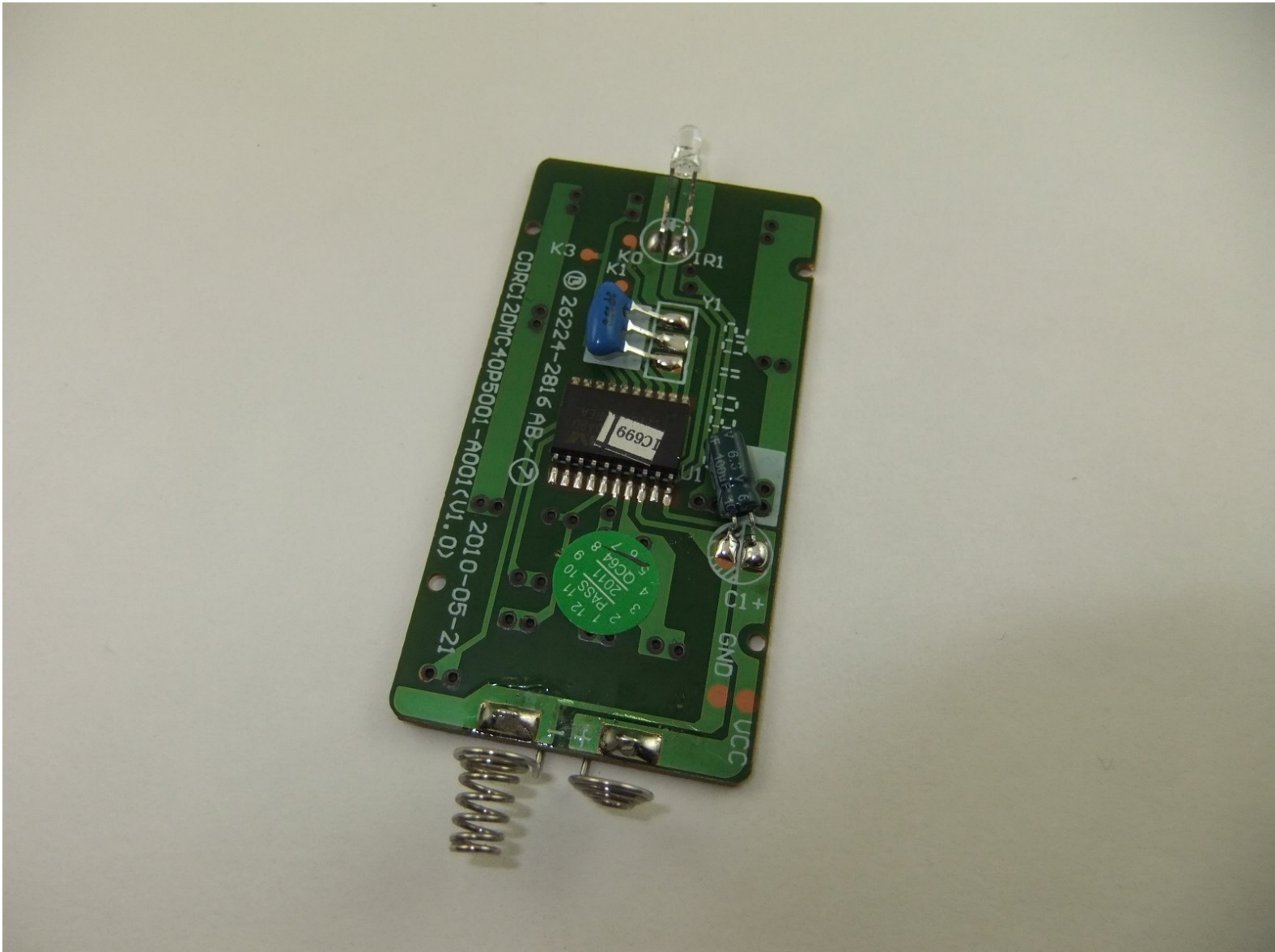




# Roku XD 2050X Remote Motherboard Replacement

Use this guide to replace the circuit board in your Roku 2050X remote.

Written By: William



---

## INTRODUCTION

In this guide, we will show you how to replace the circuit board inside your Roku XD remote control.

---




### TOOLS:

- [Spudger](#) (1)
-

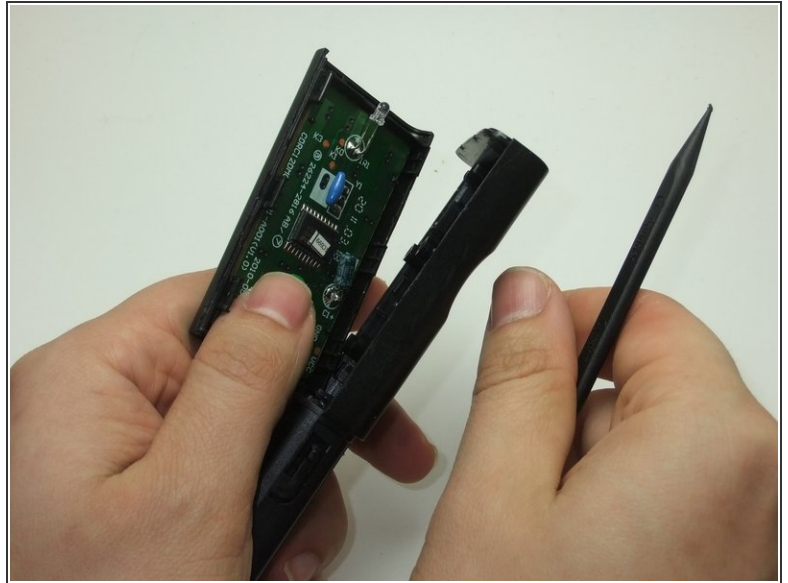
## Step 1 — Remote Control Casing



 Take care when handling components. Circuit boards, soldering points, and other areas may have sharp points.

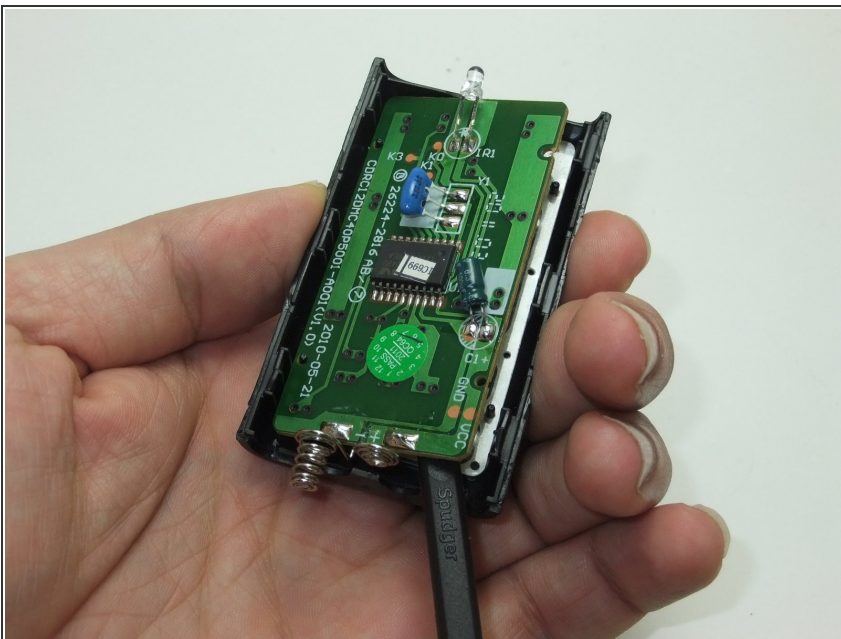
- Remove the battery cover.
- Remove the two AA batteries.

## Step 2



- Insert flat edge of spudger into seam between the top and bottom halves of the remote control.
- Gently twist the spudger to separate the top and bottom halves of the remote.

## Step 3



- Gently use the spudger to pry the circuit board loose.

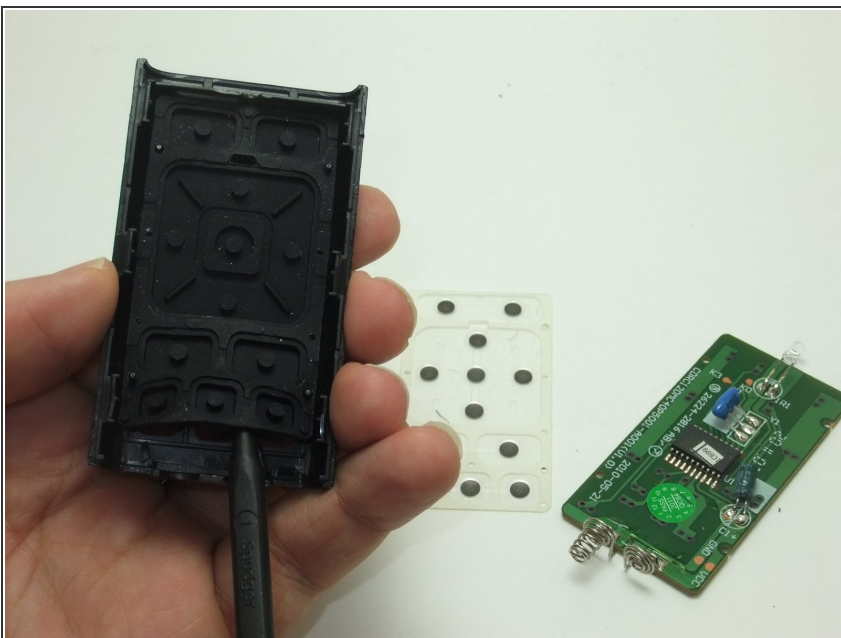


## Step 4



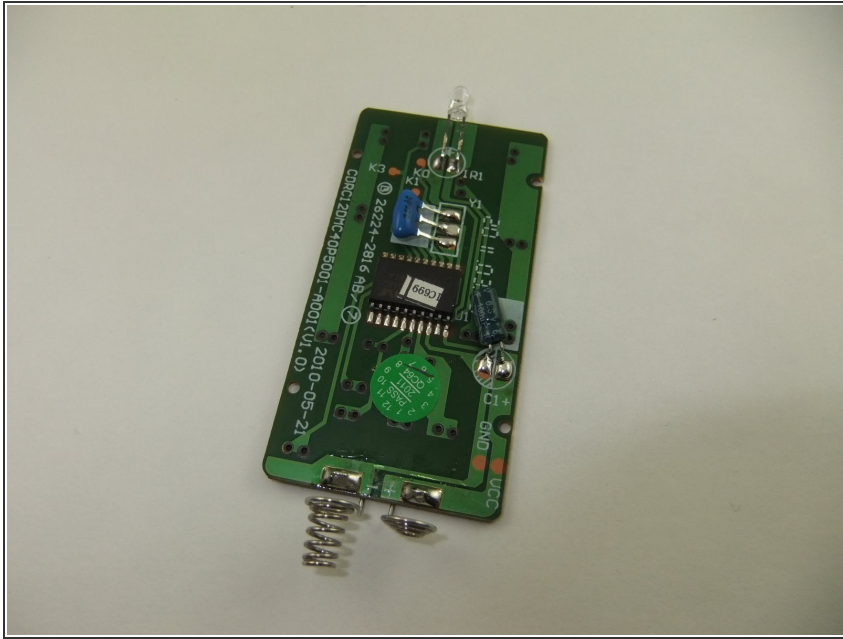
- Using either end of the spudger, gently lift and remove the clear keypad backing.

## Step 5



- Using either end of the spudger, lift and remove the rubber keypad.

## Step 6 — Remote Motherboard



- Now that the remote is disassembled, you simply need to reassemble the remote using the replacement circuit board.
- ☑ Be sure to dispose of the faulty circuit board properly. Recycle if possible!

To reassemble the remote once you've replaced the circuit board, return to the remote control disassembly page and follow the steps in reverse order.