



Roland G-800 Power Board Replacement

Remove the mains board board.

Written By: Andrew





TOOLS:

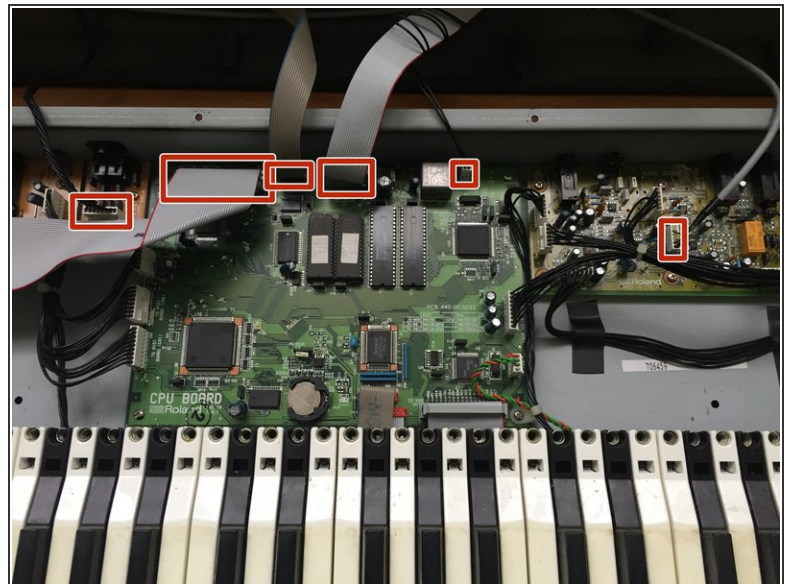
- [Flathead 3/32" or 2.5 mm Screwdriver](#) (1)
- [Phillips #2 Screwdriver](#) (1)

Step 1 — Top cover



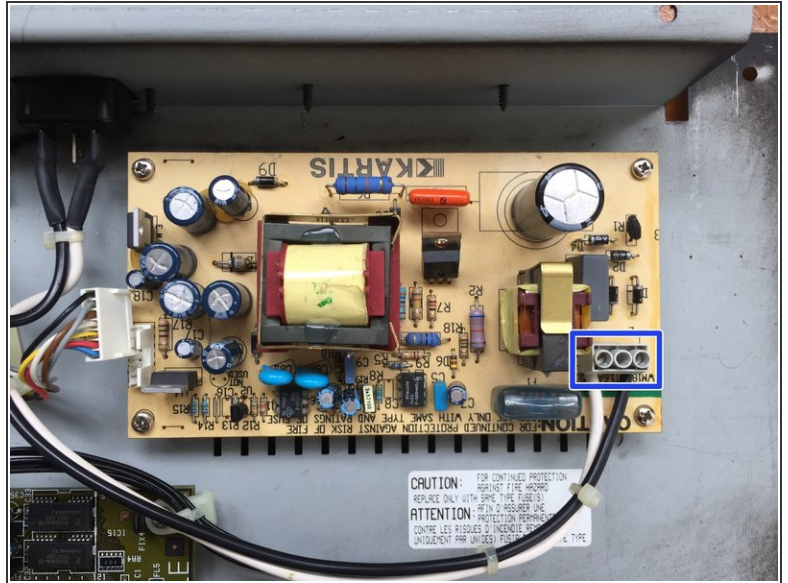
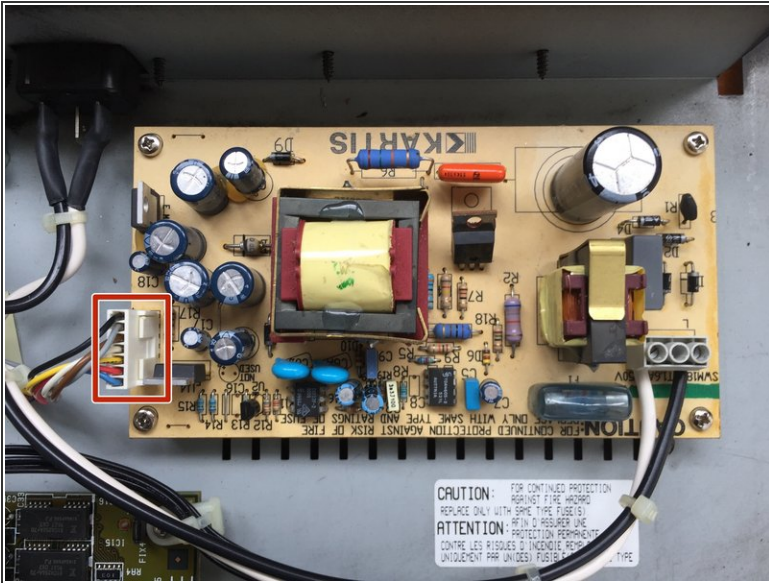
- Turn the keyboard upside down to access the screws
- Remove 15 Philips PH2 screws
- ❗ Don't worry about the other 16 screws, they hold the keys to the bottom case.

Step 2



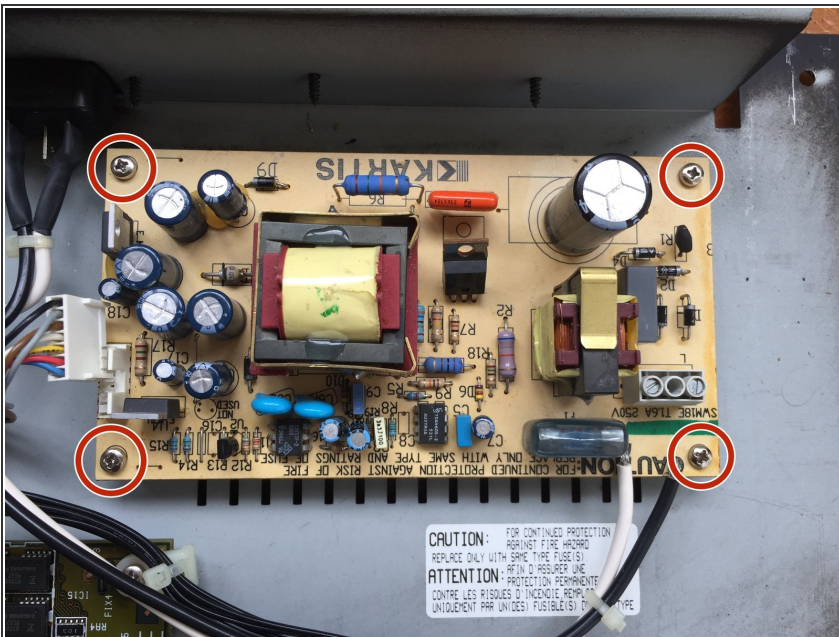
- Turn the keyboard upright again and lift the top cover from the front
- Remove 6 connectors

Step 3 — Power Board



- Remove the power output connector
- ⚠ Take note of the order of the wires here. In this case we have the white (neutral) wire on the left, but always double check when working with mains wiring.
- Loosen the two flathead screws holding the mains wires to release them

Step 4



- Remove 4 PH2 screws holding the board to the case.

To reassemble your device, follow these instructions in reverse order.