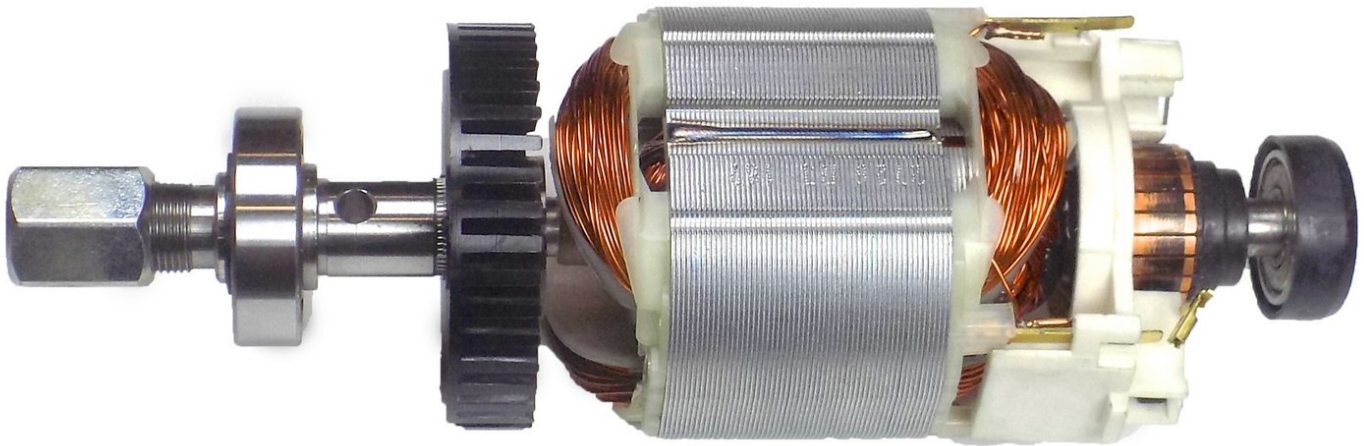




# RotoZip Rebel REB01 Type 2 Motor Replacement

Replacement guide for a damaged motor on the RotoZip.

Written By: Lauren Russell



---

## INTRODUCTION

If your motor is damaged you will have to replace the entire motor assembly. This guide will provide you with a step-by-step guide to replacing the motor assembly.




### TOOLS:

- [64 Bit Driver Kit](#) (1)
  - [Metal Spudger](#) (1)
  - [Tweezers](#) (1)
-

## Step 1 — Saw Casing



 Unplug the saw before attempting any of the replacement guides.

- Orient the saw so that the handle is closest to you and the saw end points towards the left.

## Step 2



- Push down on the grey lock on the right side of the handle to unlock it.
- Pull the handle to detach it from the saw.

### Step 3



- Lift the black lock at the tip of the saw to unlock the depth gauge.
- Pull the depth gauge to detach it from the saw.

### Step 4



- Rotate the device so that the bottom of the saw is facing upwards.
- Remove the six 20mm screws with a 6mm flathead screwdriver.

## Step 5



- Cut through the stickers on the right and left sides of the saw using a metal spudger.
- Pull off the top half of the casing.

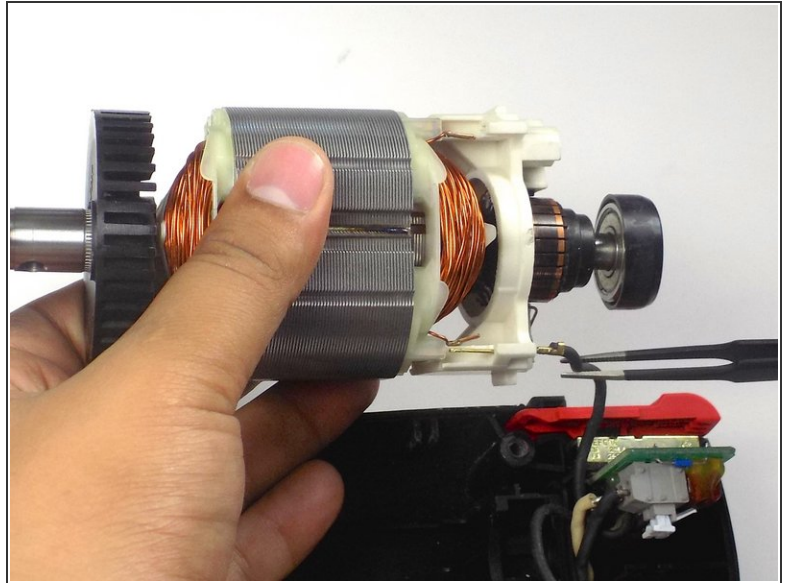
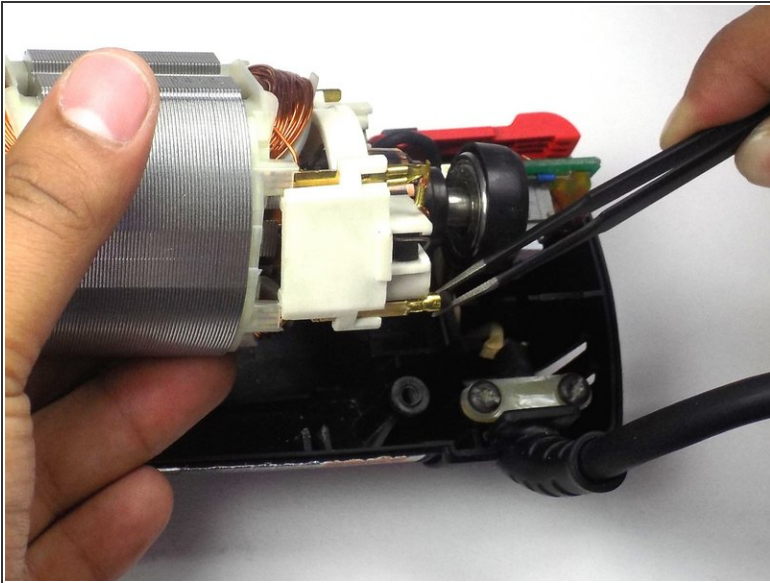
## Step 6 — Motor



- Lift the motor assembly out of the casing.
- ⓘ The white plastic piece connecting the wires and holding the motor brushes in place is fragile. Be careful to not break it when removing the motor assembly.



## Step 7



- Detach the wire connected to the bottom of the motor assembly.
- Rotate the motor away from you so that the second wire is visible, and detach that wire as well.

To reassemble your device, follow these instructions in reverse order.