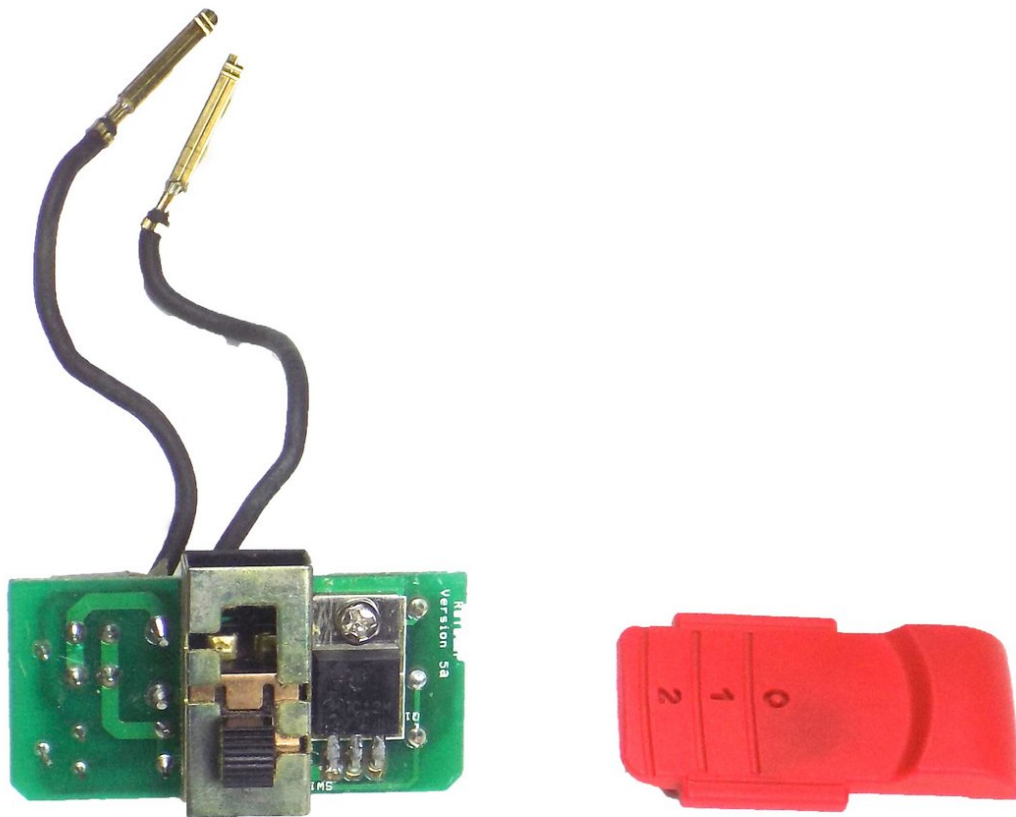




RotoZip Rebel REB01 Type 2 Switch Circuit Board Replacement

Replace a damaged power switch circuit board.

Written By: Lauren Russell



INTRODUCTION


If the power switch is stuck or not functioning anymore, you will need to replace the power switch circuit board. in order to replace the power switch circuit board you will need to remove the saw casing and motor assembly.

TOOLS:

- [64 Bit Driver Kit](#) (1)
 - [Metal Spudger](#) (1)
 - [Tweezers](#) (1)
-

Step 1 — Saw Casing



 Unplug the saw before attempting any of the replacement guides.

- Orient the saw so that the handle is closest to you and the saw end points towards the left.

Step 2



- Push down on the grey lock on the right side of the handle to unlock it.
- Pull the handle to detach it from the saw.

Step 3



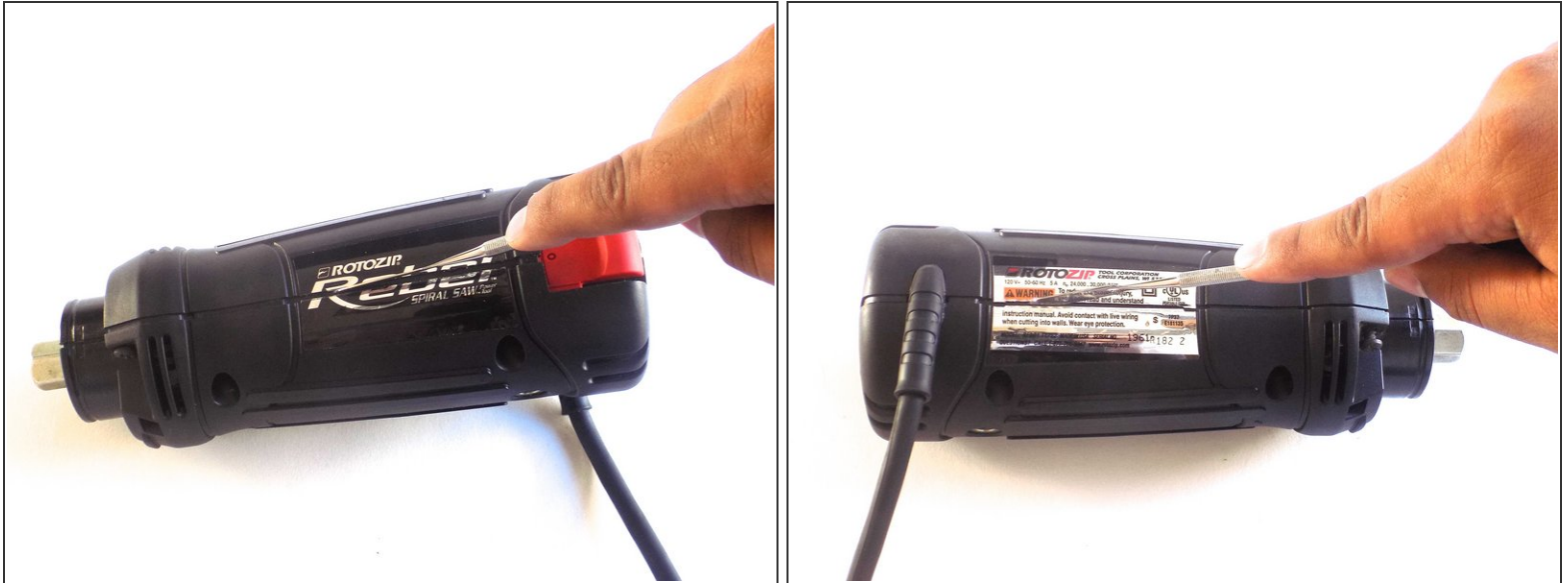
- Lift the black lock at the tip of the saw to unlock the depth gauge.
- Pull the depth gauge to detach it from the saw.

Step 4



- Rotate the device so that the bottom of the saw is facing upwards.
- Remove the six 20mm screws with a 6mm flathead screwdriver.

Step 5



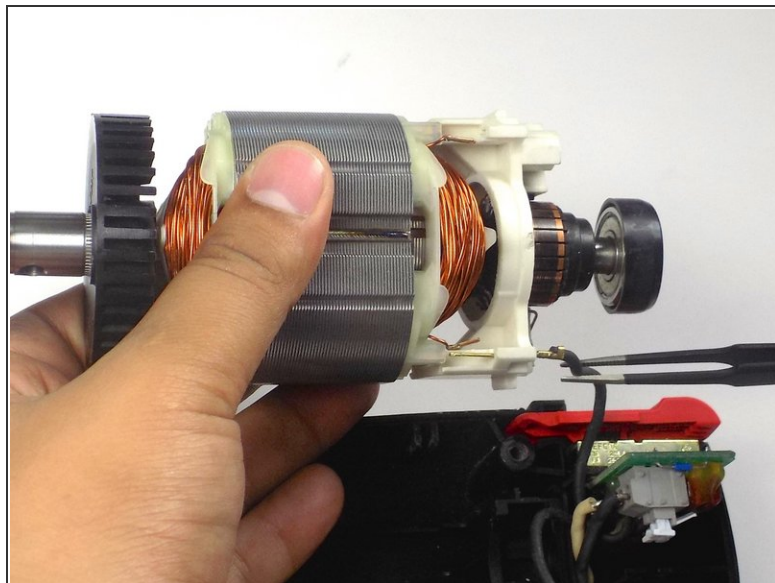
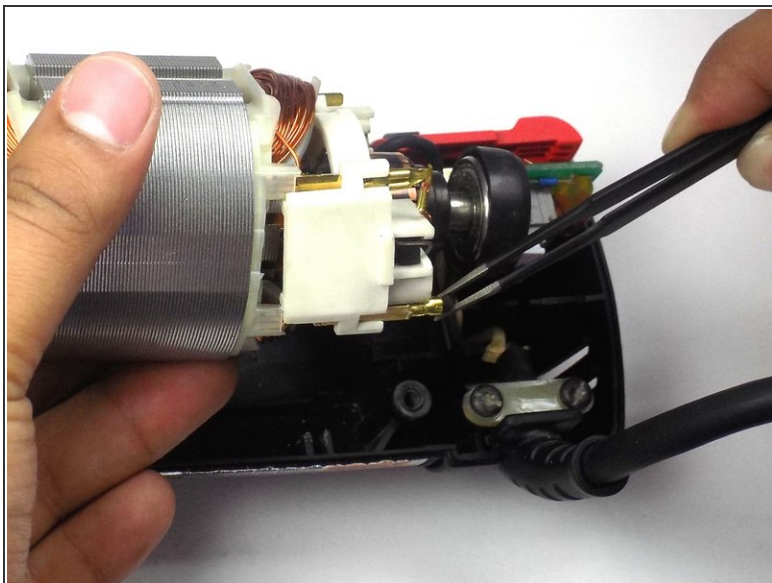
- Cut through the stickers on the right and left sides of the saw using a metal spudger.
- Pull off the top half of the casing.

Step 6 — Motor



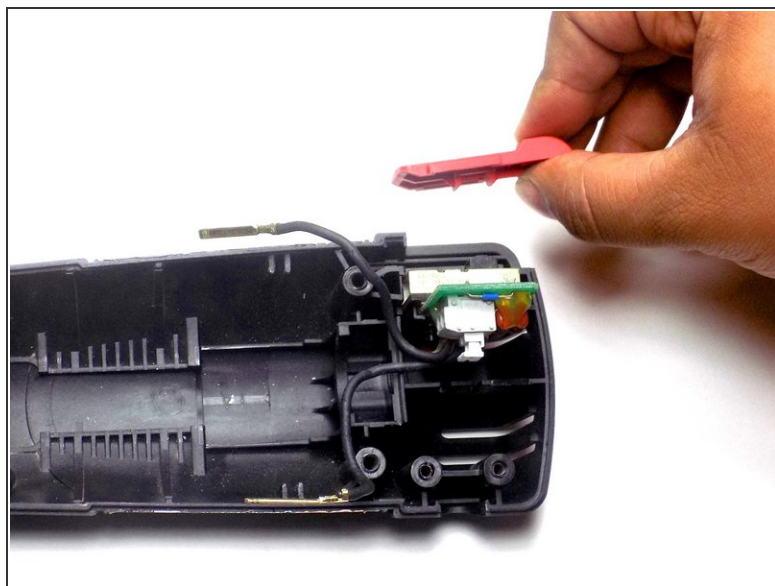
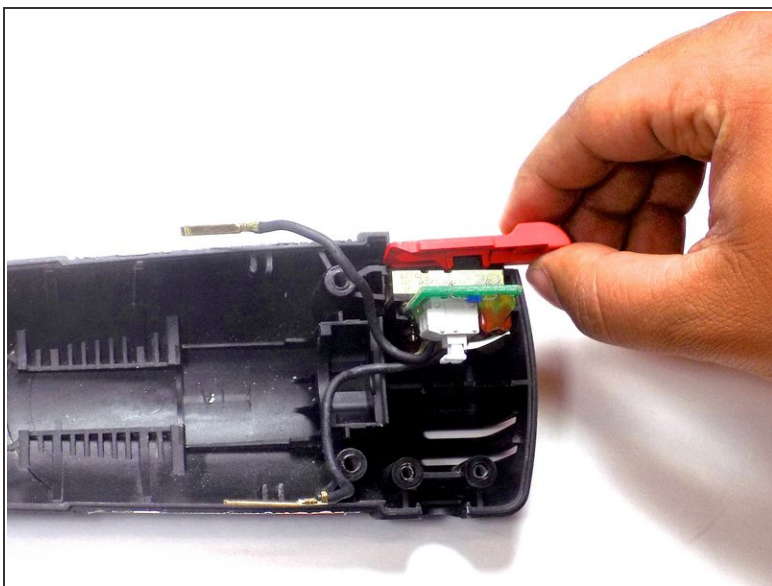
- Lift the motor assembly out of the casing.
- ⓘ The white plastic piece connecting the wires and holding the motor brushes in place is fragile. Be careful to not break it when removing the motor assembly.


Step 7



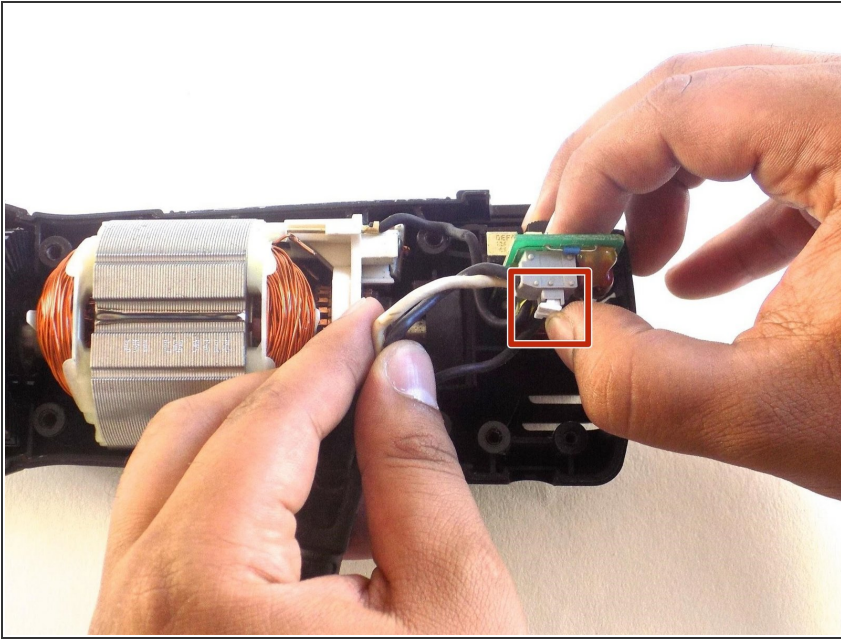
- Detach the wire connected to the bottom of the motor assembly.
- Rotate the motor away from you so that the second wire is visible, and detach that wire as well.

Step 8 — Power Switch Circuit Board



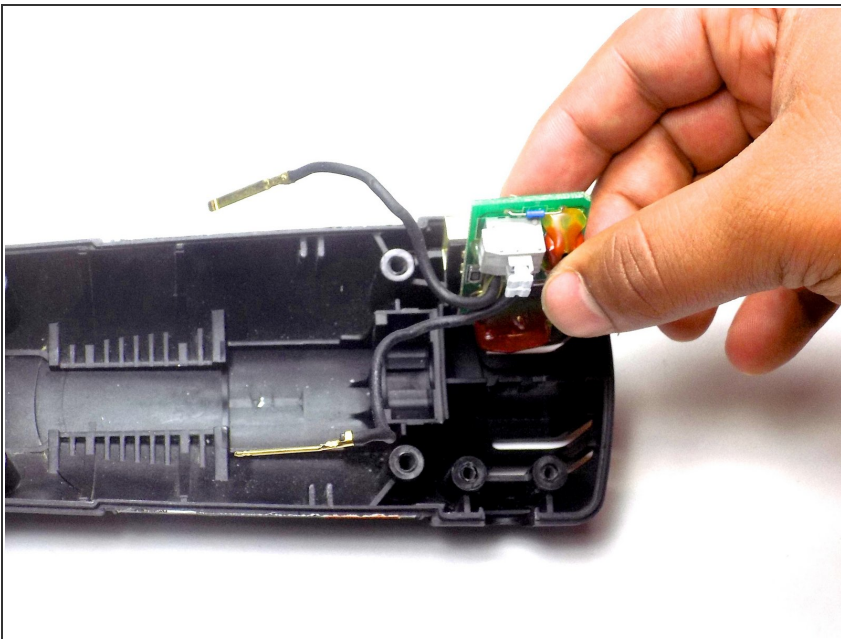
- Slide the red bumper switch off the casing.
-  The power cord is not shown, but does not need to be removed.

Step 9



- Pinch the two white clips with your thumb while simultaneously pulling the black and white wires.
- ⓘ The motor assembly is shown in this picture, do not worry about it since you have removed it in the previous steps.

Step 10



- Pull the circuit board upward to remove it from the casing.

To reassemble your device, follow these instructions in reverse order.