



Rowenta silent force extreme RO5931 main brush Teardown

The brush on the main head of this vacuum can wear with use or a inner-broken plastic piece may hinder the button of the brush to lower the brush properly.

Written By: David



INTRODUCTION

The push button did not lower the brush properly : a broken plastic inner-piece was hindering the lowering of the brush. This guide explains how to tear down the brush and put the broken piece away.



TOOLS:

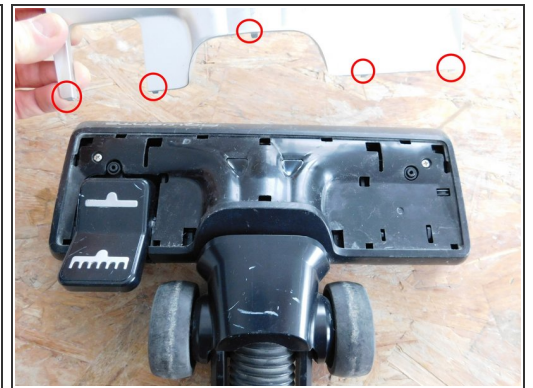
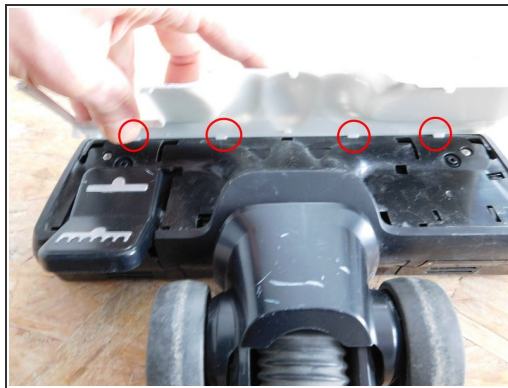
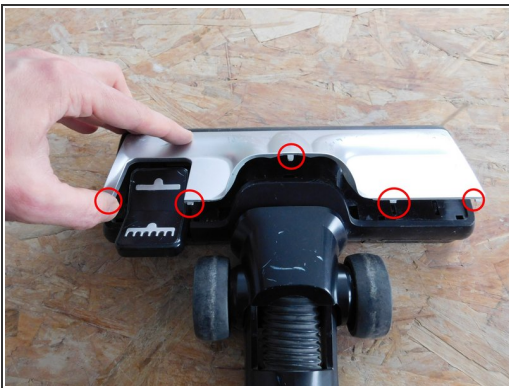
- [Phillips #00 Screwdriver](#) (1)
 - [TR10 Torx Security Screwdriver](#) (1)
 - [1.8 X 40 Slot Screwdriver](#) (1)
 - [Shop Towels](#) (1)
-

Step 1 — Unplug the vacuum cleaner



- Turn off the vacuum and unplug it from the outlet.
- Unmount the main brush head from the cleaner pipe.

Step 2 — Remove the top cover



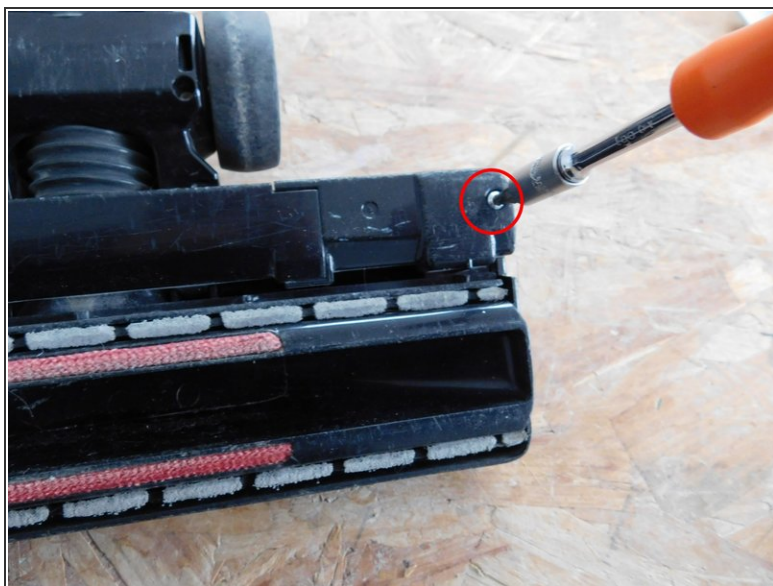
- Unsnap the clips of the top cover with a small slot screwdriver.
- Remove the top cover of the brush.

Step 3 — Unscrew the two top Philips screws



- Unscrew both Philips screws from the top of the brush.

Step 4 — Unscrew security torx screws



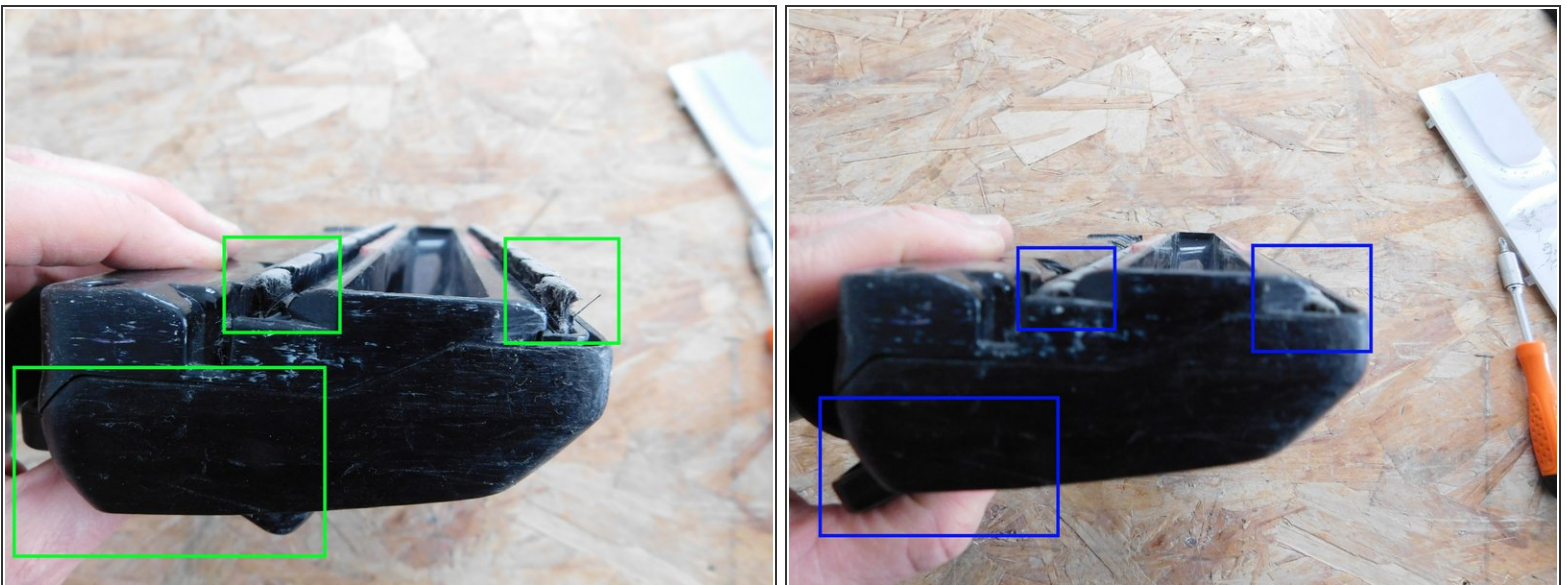
- Unscrew both security torx screws.

Step 5 — Remove the top of the brush head



- Smoothly and carefully take out the top of the brush head.
- Take some time to search for the defect.
- Remove broken pieces and repair if you can.
- Clean up the inner parts of the brush with a smooth cloth. Remove dust, grains that could damage the inner parts of the brush.

Step 6 — Check the handle of the brush retract is fixed



- Push the retract button : the brush must be lowered.