



# Rug Doctor Handle Replacement

Prerequisite guide only! Removes the handle from the body of the Rug Doctor.

Written By: Arthur Shi



---

# INTRODUCTION

Prerequisite guide only! Removes the handle from the body of the Rug Doctor.

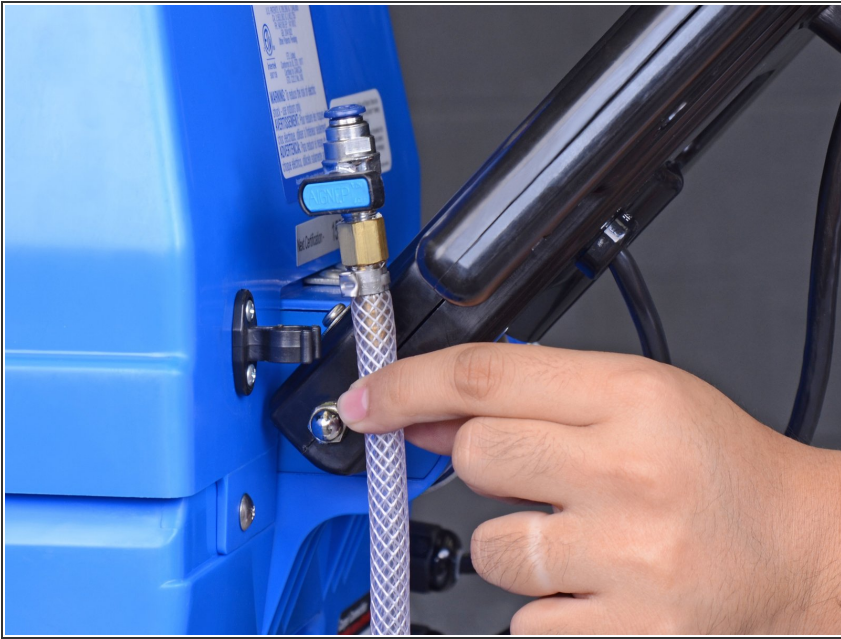
---



## TOOLS:

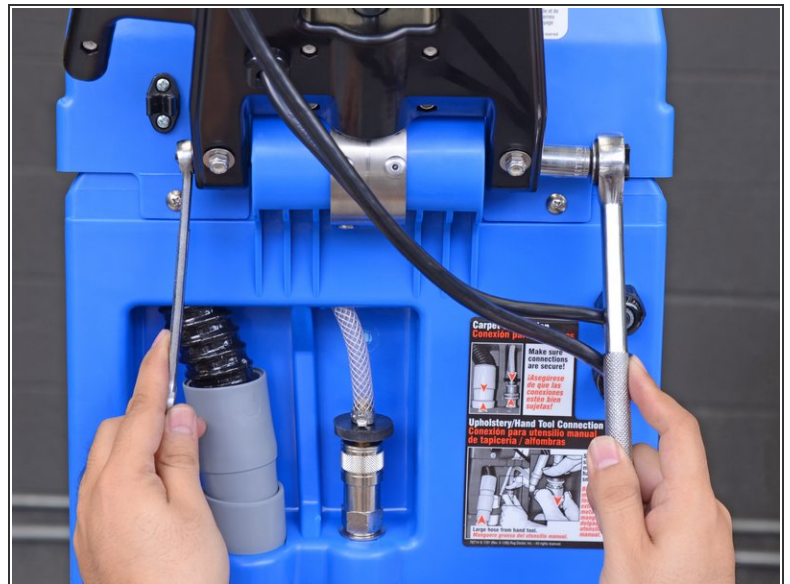
- [7/16" Socket](#) (1)
  - [7/16 Crescent Wrench](#) (1)
-

## Step 1 — Handle



- ❗ Before you begin disassembly, make sure that the Rug Doctor is not plugged in and that all reservoirs are empty of liquids.
- Unclip the clear hose from the back of the Rug Doctor.

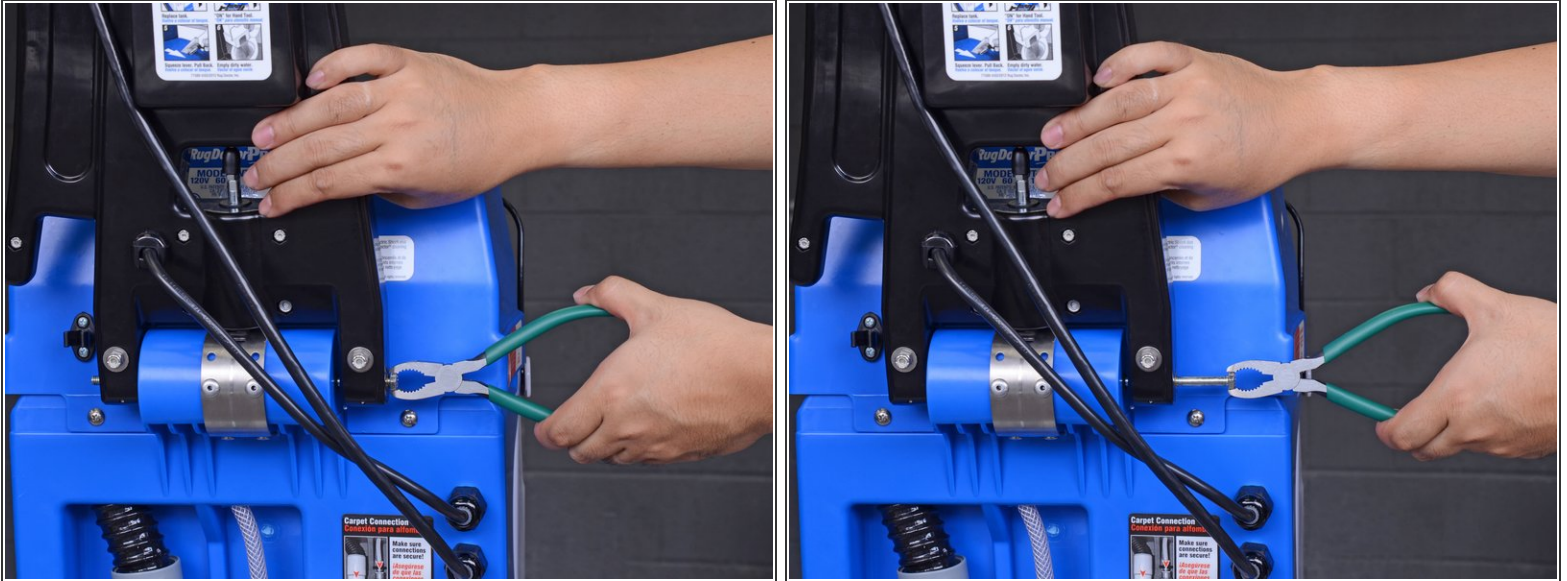
## Step 2



- Use a 7/16" (11 mm OK) wrench to hold the handle axle while you use a 7/16" socket to remove the cap nut securing the axle end.



### Step 3



- Support the handle with one hand. It will be loose after this step.
- Use fingers or pliers to pull out the handle axle.
- ⓘ If the axle feels hard to pull out, squeeze the handle release lever to release pressure on the axle.

### Step 4



- Detach the handle from the Rug Doctor and set it down.
- ⓘ If you need more cable slack, you can set the Rug Doctor on its side.

To reassemble your device, follow these instructions in reverse order.