



Ruton Mixer Gear Replacement

How to disassemble a RO 3105 Ruton mixer and replace the gears.

Written By: Tijdelijk anoniem



INTRODUCTION

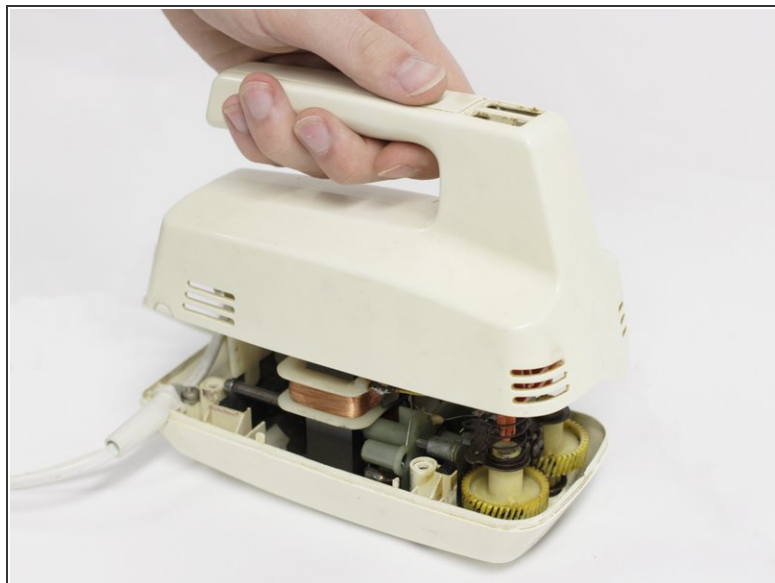
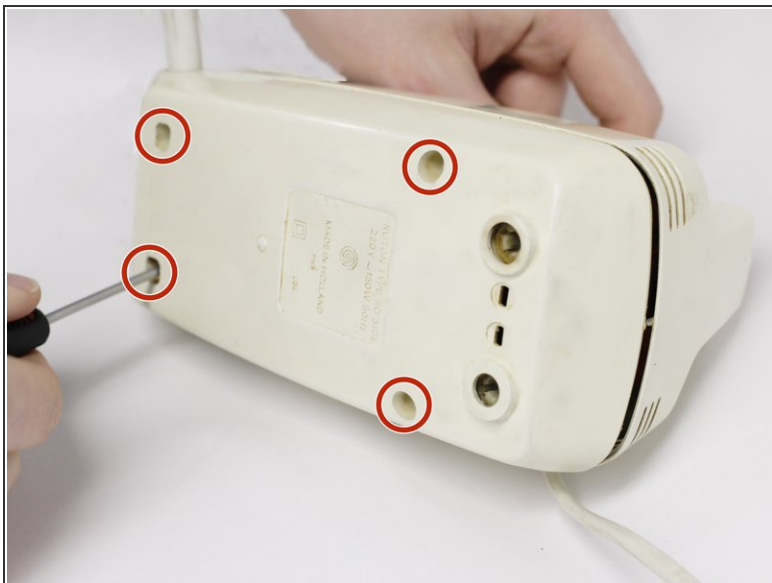
When the gears of a hand mixer are warped or damaged this can cause them block, effectively rendering your mixer useless. Fortunately, it is easy to replace them, making your mixer function as new. If the gears are not damaged but just don't run smoothly anymore, it's also possible to clean and lubricate them.



TOOLS:

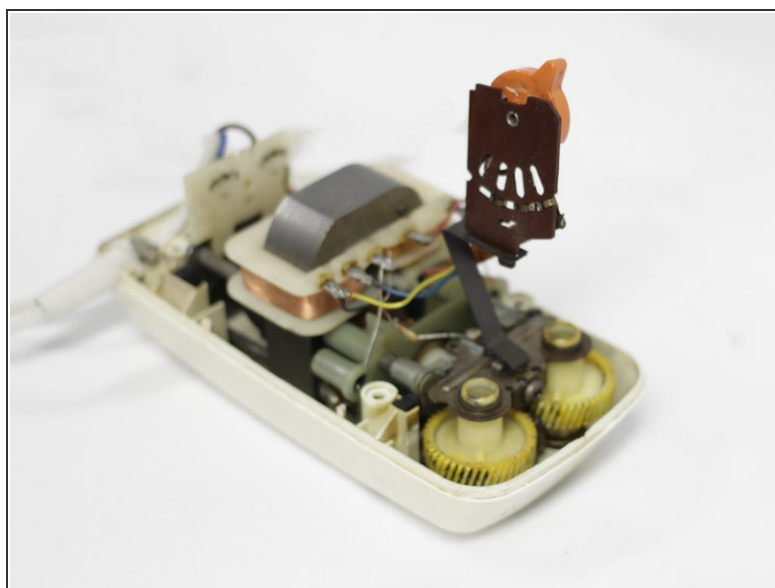
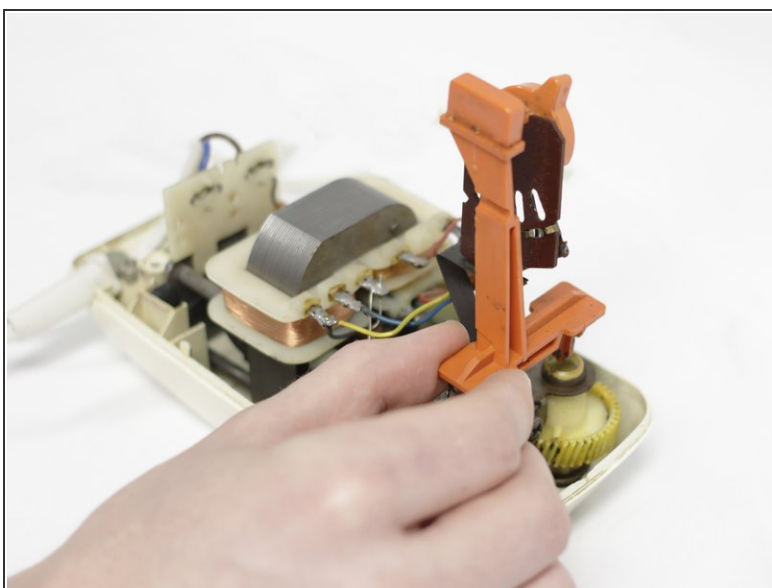
- [Phillips #1 Screwdriver](#) (1)
-

Step 1 — Gears



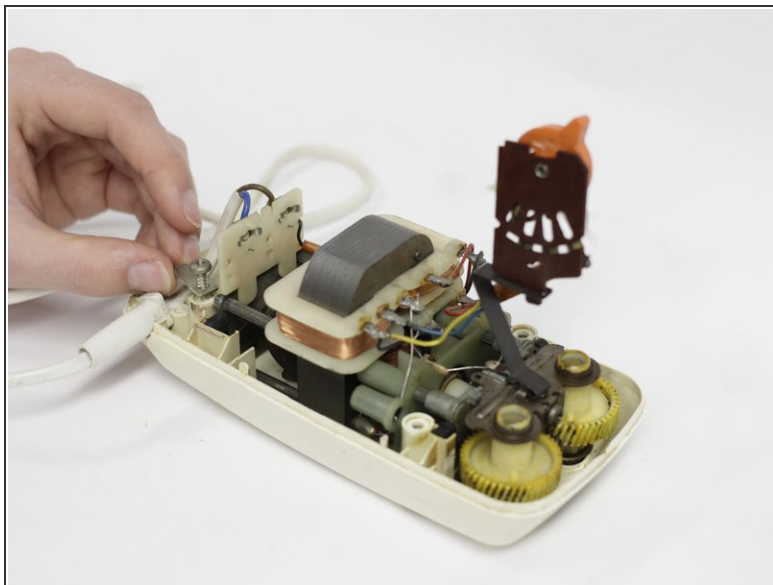
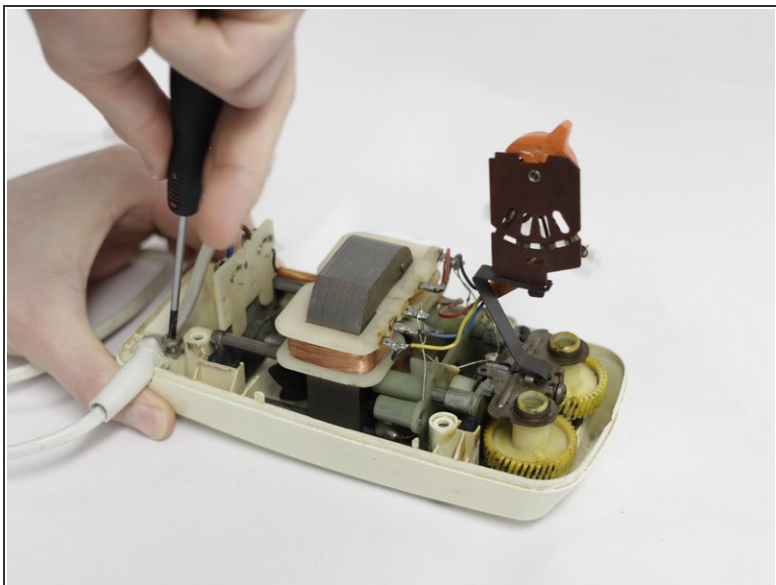
- Slightly loosen all four 2.54 cm Phillips #1 screws and remove them.
- Remove the top casing.

Step 2



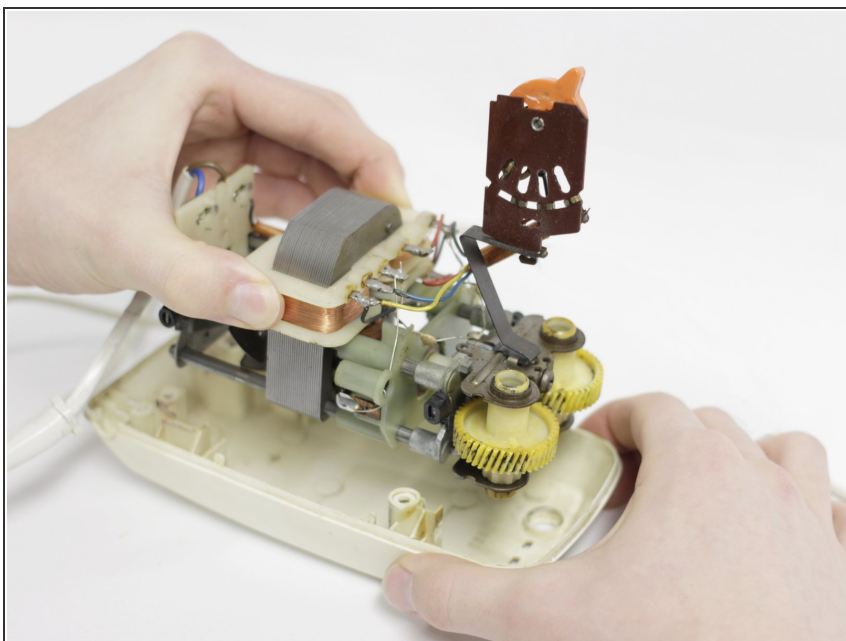
- Remove the button unit, including the spring.

Step 3



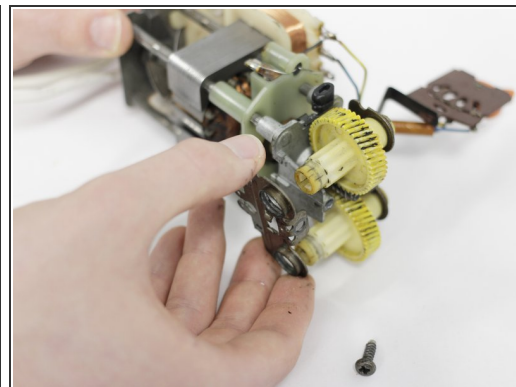
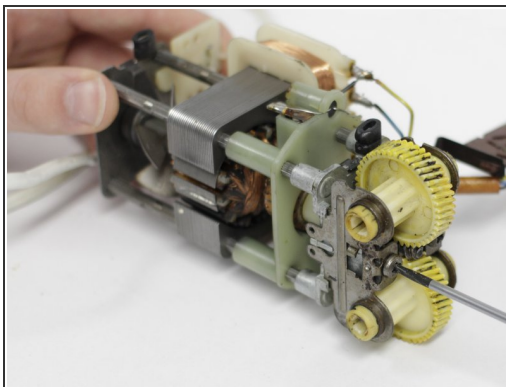
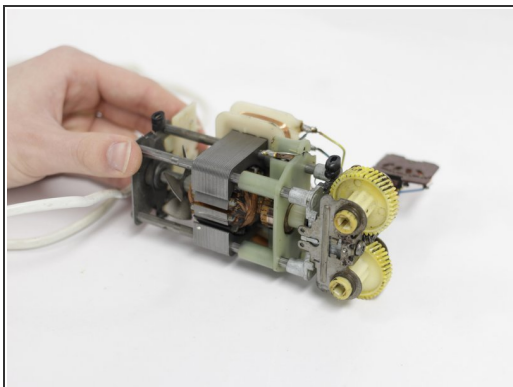
- Remove the 1.50 cm Phillips #1 screw that holds the cable clamp.
- Remove the cable clamp.

Step 4



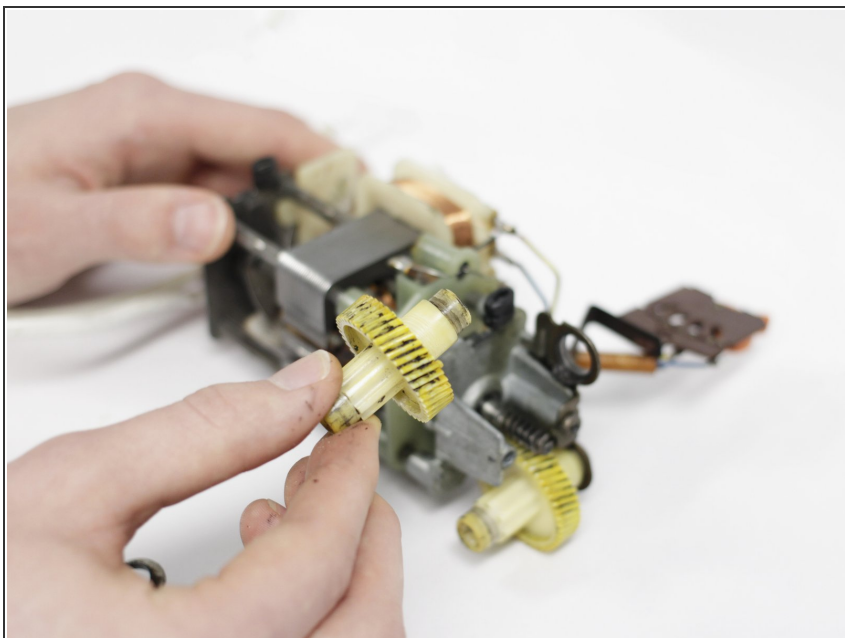
- Lift the product from the bottom casing.

Step 5



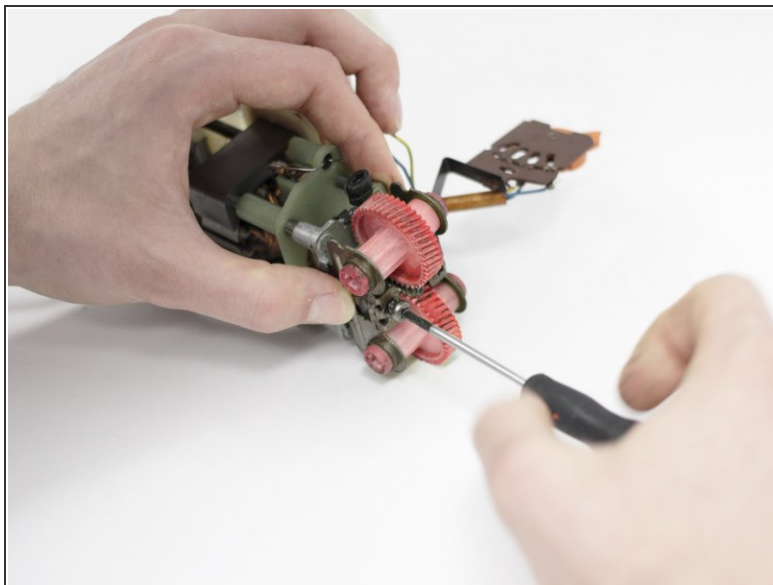
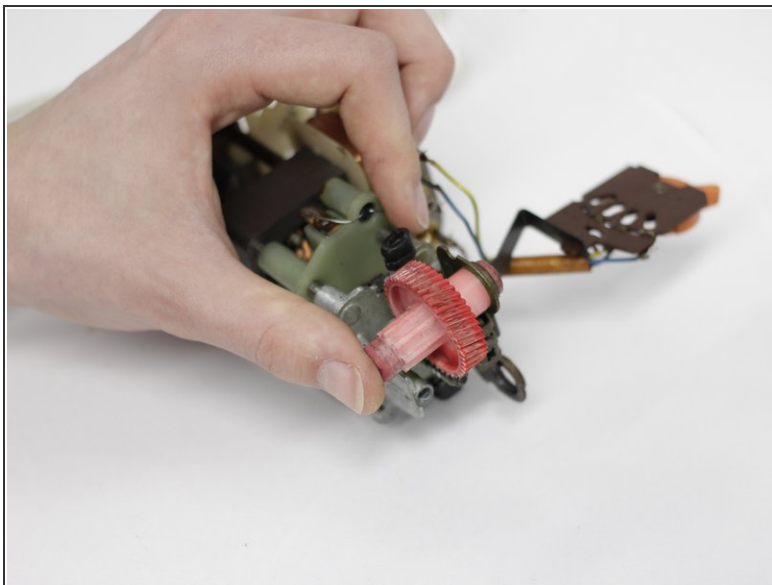
- Lay the product on its side and remove the 1.27 cm Phillips #1 screw holding the bottom metal plate in place.
- Remove the metal plate holding the gears in place.

Step 6



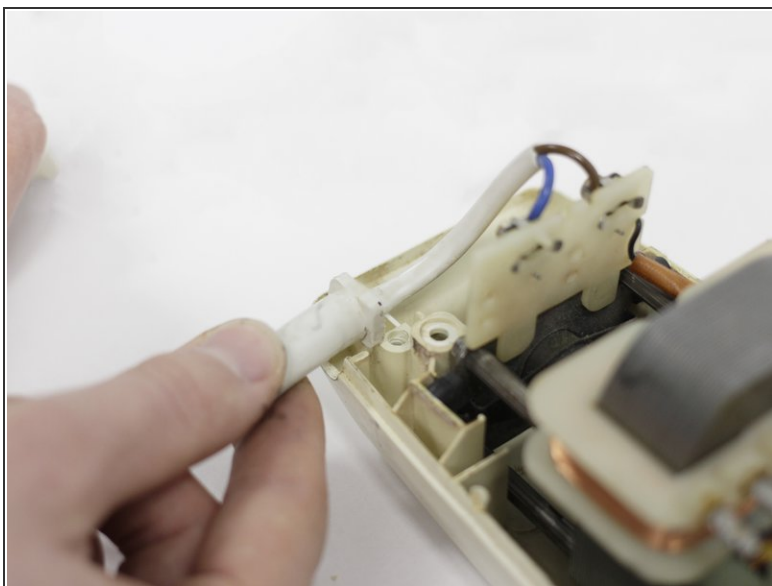
- Remove the gears.

Step 7



- Replace the gears with new ones.

Step 8



- Reassemble the mixer.
- ☑ Put the cable protection in the correct position before fastening the cable and reassembling the mixer.

To reassemble your device, follow these instructions in reverse order.