



Rydis H68 Pro Motherboard Replacement

Replace a defective Moneual RYDIS H68 Pro motherboard for a new one to ensure a long lasting machine.

Written By: Jessica Alimonti



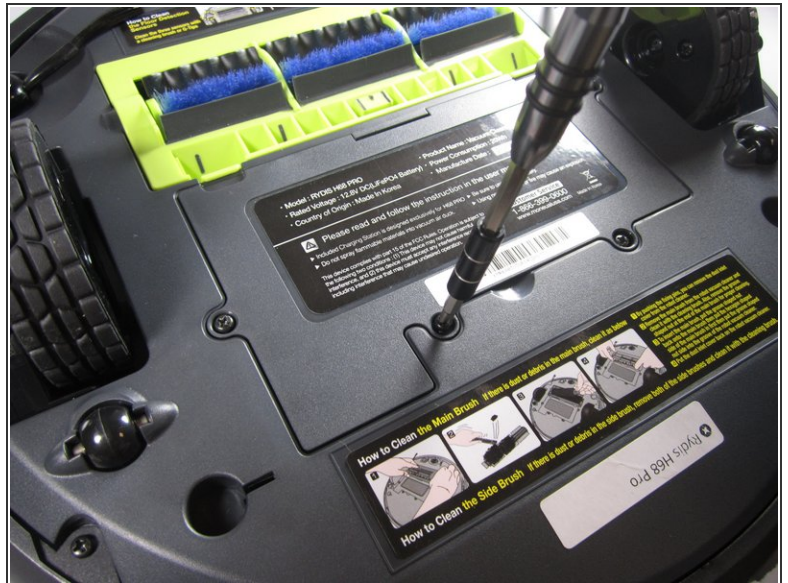
INTRODUCTION

Vacuum does not power on even after the battery has been replaced? The motherboard may be defective. Follow this guide on how to change it for a new one!

TOOLS:

- [Phillips #1 Screwdriver](#) (1)
 - [Metal Spudger](#) (1)
-

Step 1 — Battery



- Flip the vacuum over so that the wheels are facing you.
- Use a Phillips #1 screwdriver to remove the four 10mm screws that surround the battery cover.

Step 2



- Lift up the battery cover to reveal the battery.
- Remove the battery.

Step 3 — Bumper



- Remove the eight 10 mm Phillips #1 screws.

Step 4



- Hold the front bumper and pull it off.
- ⓘ It requires a lot of force to pull the bumper off.

Step 5



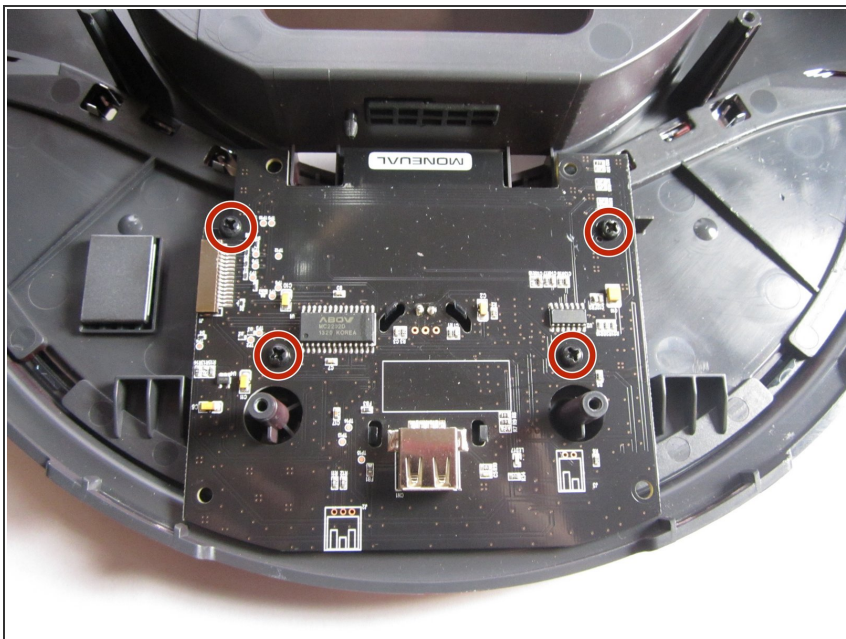
- Pry off the back bumper by going around the entire top of the bumper with the metal spudger.

Step 6 — Motherboard



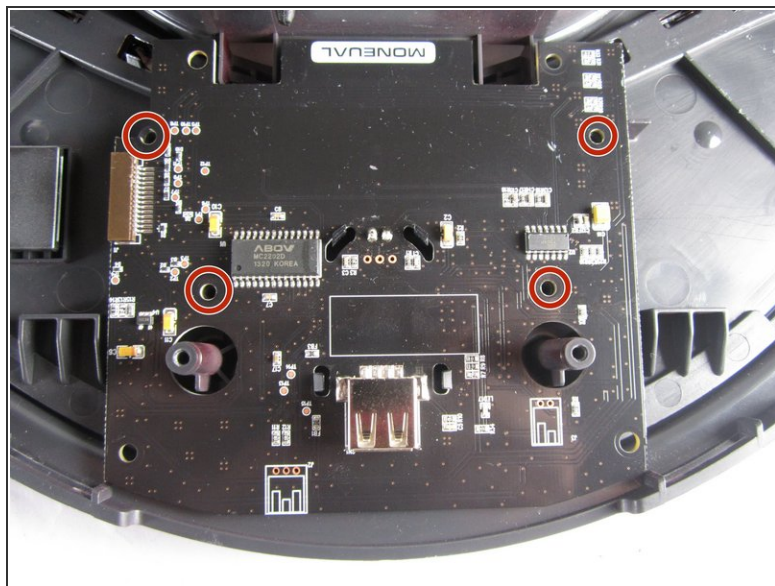
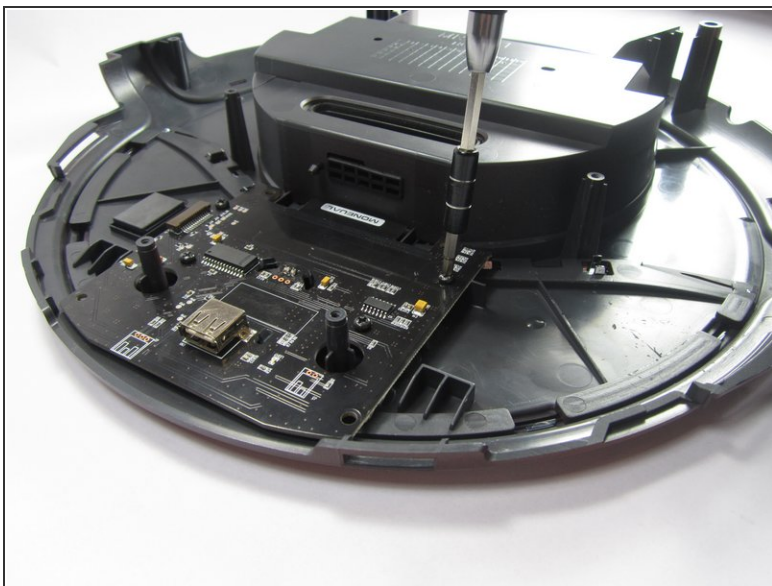
- To access the motherboard entirely, lift the top portion of the vacuum off.

Step 7



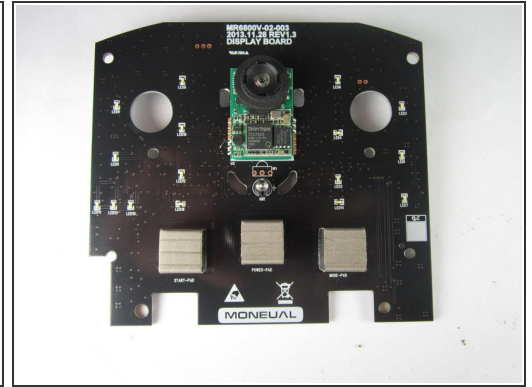
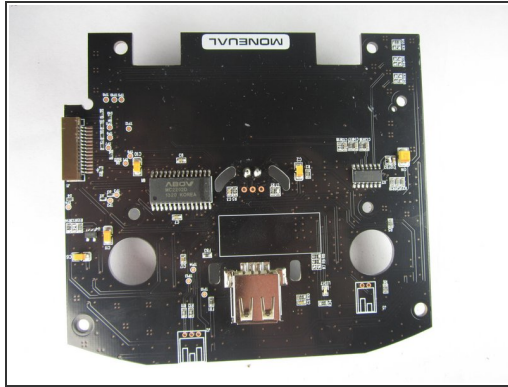
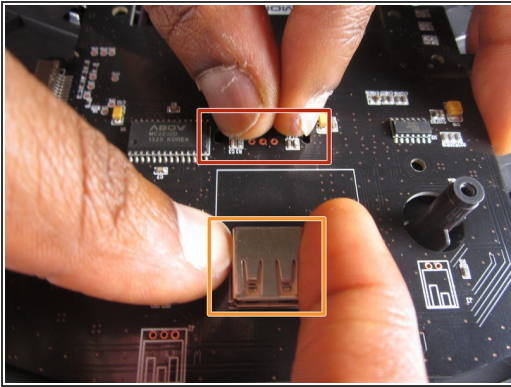
- Locate the four main 10mm screws on the underside of the motherboard.

Step 8



- Use a Phillip's #1 screwdriver to unscrew and remove the four 10 mm screws.

Step 9



- Pinch the two tabs together, shown here, to loosen the motherboard out of the vacuum.
- Lightly pull on the silver box shown to lift the motherboard out.

To reassemble your device, follow these instructions in reverse order.