



Ryobi CSB125 Motor Replacement

Use this guide to replace the motor on your Ryobi CSB125.

Written By: Curtis Melo



INTRODUCTION

This guide will show you how to properly access the internals to the motor housing to your Ryobi CSB125 circular saw. If you hear a humming noise when pressing the trigger, or while operating the saw smoke forms, then most likely the motor has gone bad. This [troubleshooting page](#) will help diagnose any potential problems occurring due to a faulty motor. In the event that a new motor is needed, this guide will show the steps to properly install a new one. The only tools you will need are a #2 Phillips screwdriver, a 7"/32 allen key, and a T20 torx screwdriver.


TOOLS:

- [Allen Wrench 7/32"](#) (1)
 - [T20 Torx Screwdriver](#) (1)
 - [Phillips #2 Screwdriver](#) (1)
-

Step 1 — Motor



- Place the saw on a flat surface with the blade facing up.

 Make sure that the saw is unplugged from any power source.

Step 2



- Remove the bumper by using the T20 torx screwdriver to loosen the M5 x 20mm screw.

Step 3



- Use the 7/32 allen key to loosen the 5/16-18 x 9/16 in. blade screw.

Step 4



- Remove the 5/16-18 x 9/16 in. blade screw, spring washer, the outer blade washer, the blade, and the inner blade washer.

Step 5



- Use the #2 Phillip screwdriver to remove the four M4x16mm screws shown.
- ⓘ You will need to rotate the protective shell around in order to access them.

Step 6



- Remove the lower blade guard support assembly from the rest of the saw.

Step 7



- Flip the saw over and place the saw down on a flat surface with the motor facing up.

Step 8



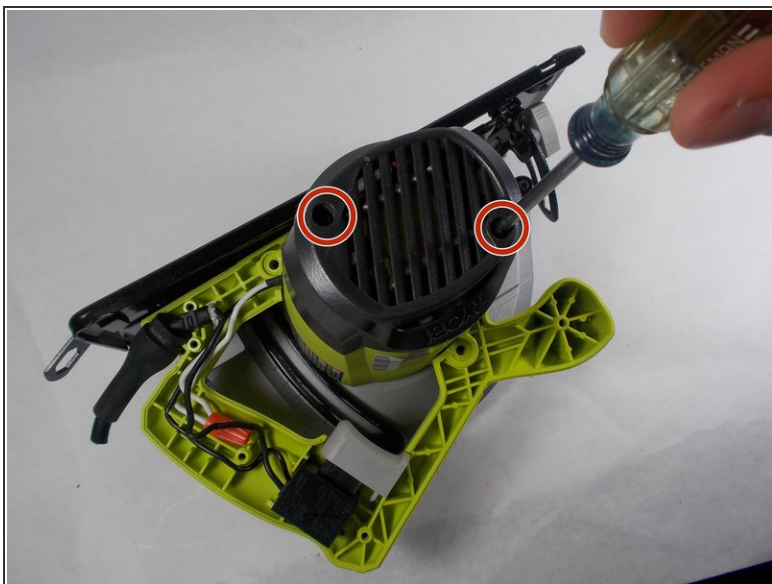
- Use the Phillips #2 screwdriver to remove the five M4x16mm screws.

Step 9



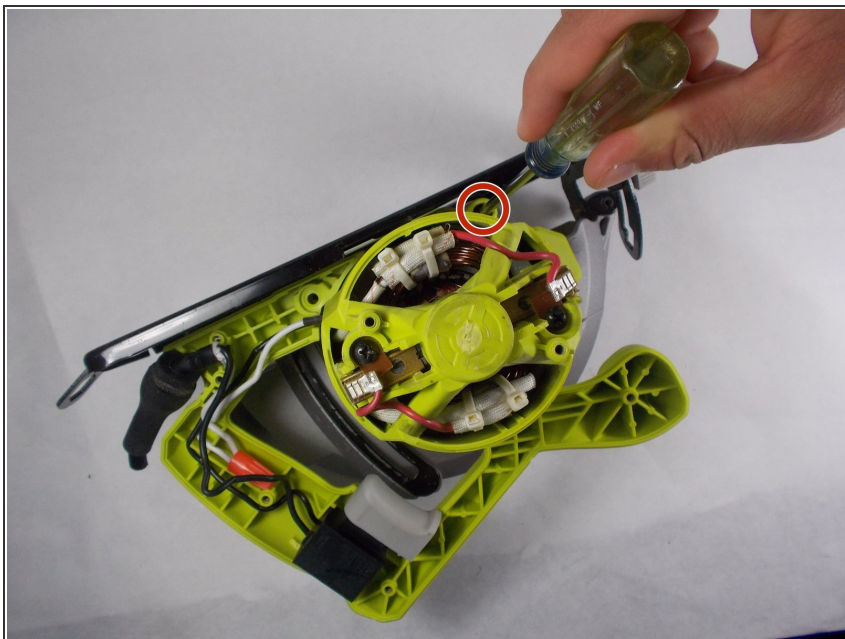
- Use the Phillips #2 screwdriver to remove the two M45x35mm screws.

Step 10



- Use the Phillips #2 screwdriver to remove the two M4x16mm screws holding down the end cover.
- Pull off the end cover.

Step 11



- Use the Phillips #2 screwdriver to remove the M45x35mm screw holding down the motor housing.

Step 12



- Remove the motor housing for access to the internal motor components.

To reassemble your device, follow these instructions in reverse order.