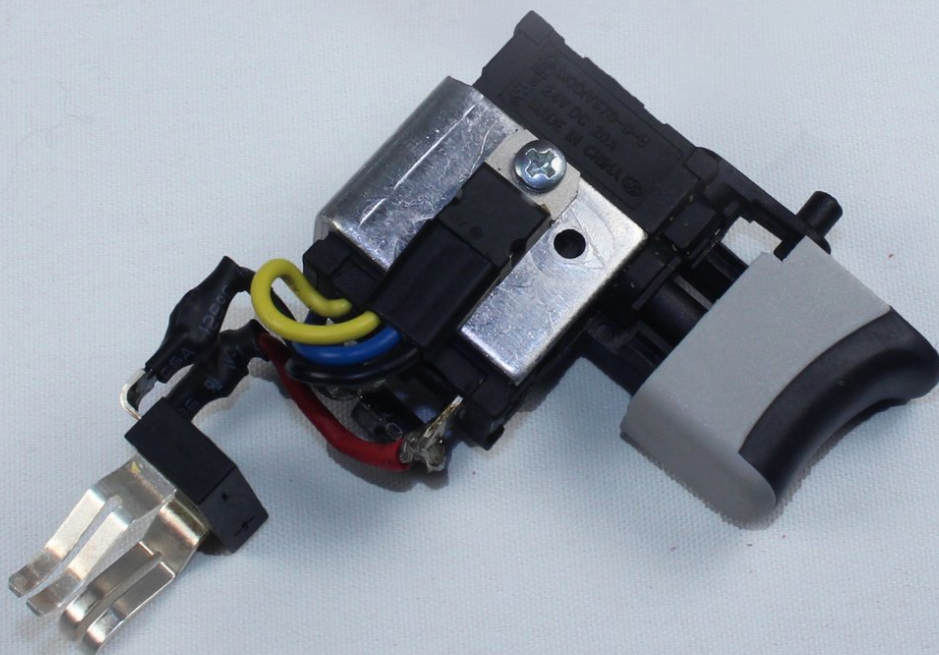




# Ryobi P202 Trigger Assembly Replacement

Replacement of the Ryobi P202 cordless drill trigger assembly.

Written By: Joseph Eckstein



---

## INTRODUCTION

This guide demonstrates how to replace the trigger assembly. This includes the trigger and the integrated circuit that controls the motor. It is necessary that the battery is removed before beginning to ensure that the drill is not receiving power when its electronics are removed. Some soldering experience is required.




### TOOLS:

- [T10 Torx Screwdriver](#) (1)
  - [Soldering Iron](#) (1)
-

## Step 1 — Battery



 The battery can shock you. Only touch plastic, non-conductive components.

- Detach the battery unit from the drill body by pressing the battery release buttons on both sides of the unit and pulling outwards.

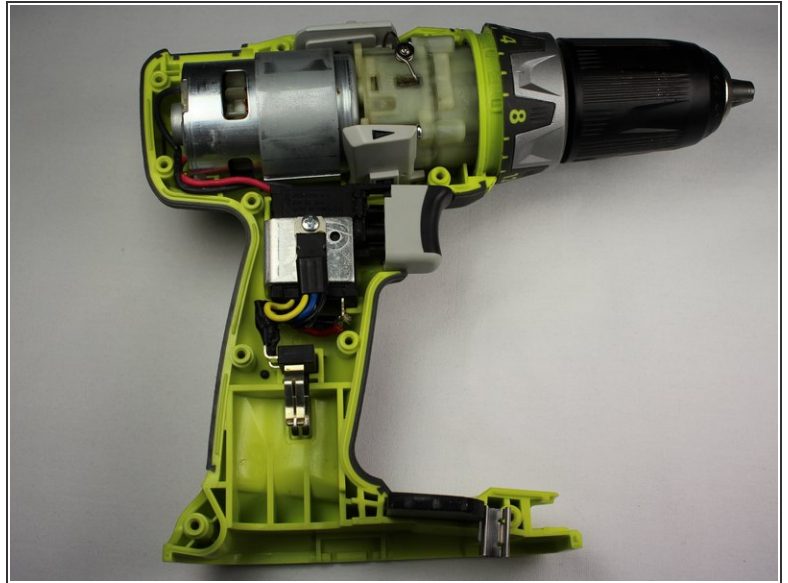
## Step 2 — Right Side Case



- Use a Torx T10 screw driver to unscrew all ten 13.5 mm screws from the drill casing to gain access to the interior.

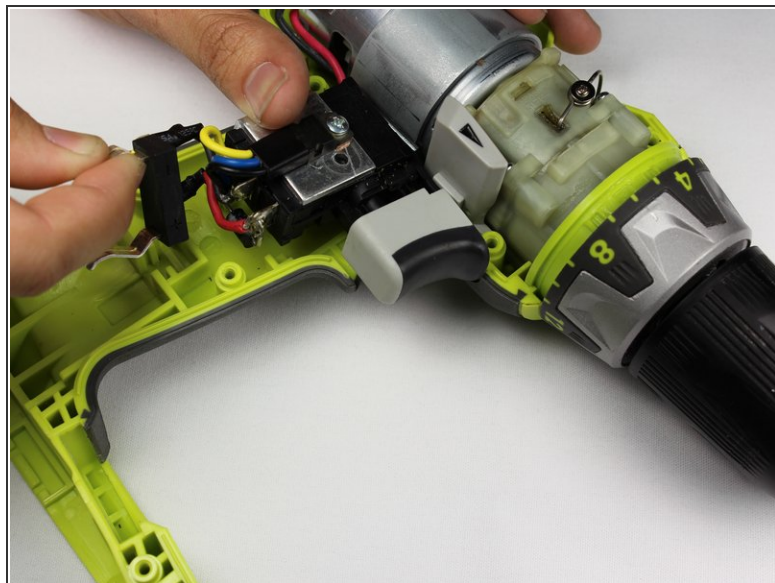
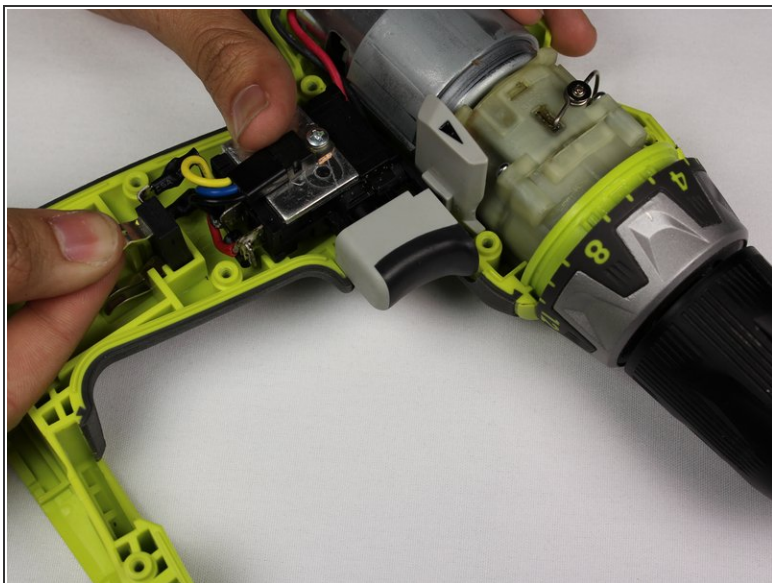


## Step 3



- Gently lift the casing from the drill body.
  - Take the casing completely off the drill body to gain access to the interior of the drill.
- i** The Ryobi P202 casing has Part #: 200690001

## Step 4 — Battery Contacts



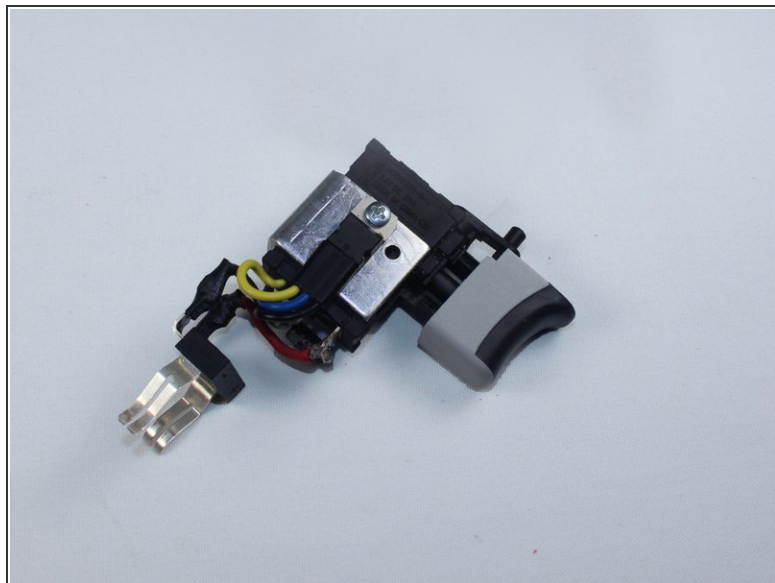
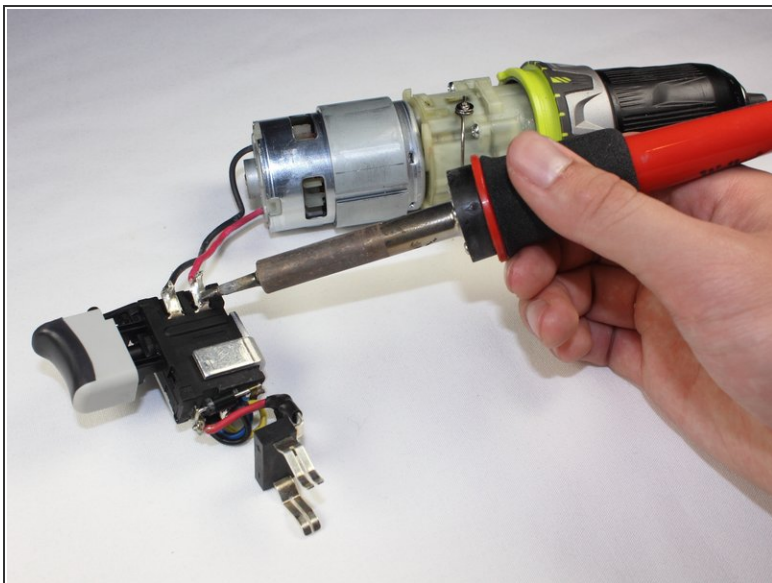
- Grip the battery clip and pull straight up to remove the metal battery contacts.
- You can now clean the metal battery contacts with isopropyl alcohol.

## Step 5 — Trigger Assembly



- Holding the direction select switch in place, grip both sides of the trigger assembly and lift it up and towards the base of the drill.

## Step 6



- To separate the trigger assembly from the motor, use a soldering iron to melt the solder and pull gently on the red and black wires from the trigger.

 Heating the solder may melt the plastic packaging. Prior experience with soldering is required.

 The trigger assembly is Part #: 270001392

To reassemble your device, follow these instructions in reverse order. You will need solder to reattach the wires to the trigger assembly.