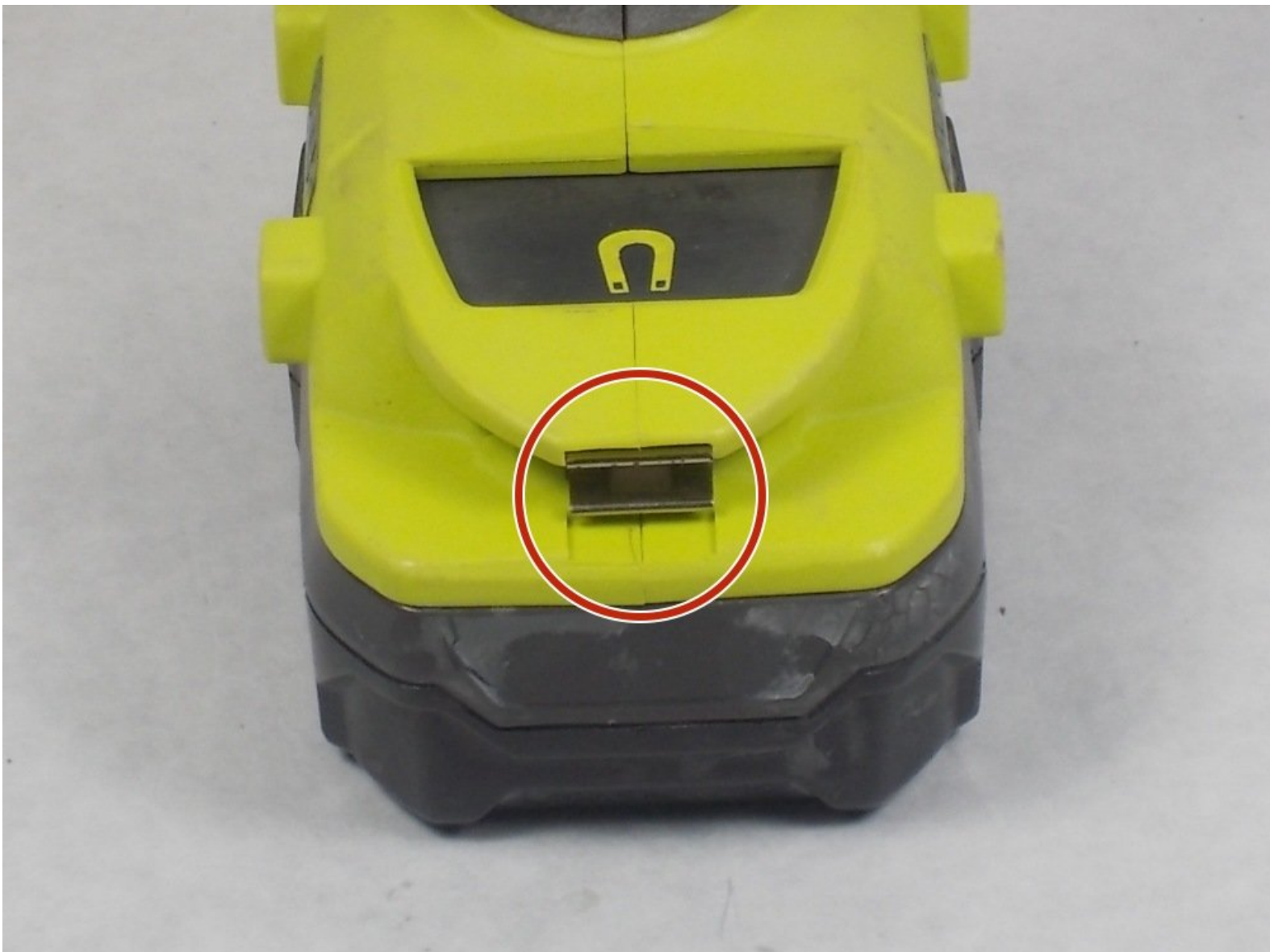




Ryobi P235 Bit-Holder Replacement

This guide will detail the replacement of the bit-holder of a Ryobi P235.

Written By: Paul Sousa



INTRODUCTION

The bit holder makes it easier to keep the bits you need close to your drill. This guide shows how to replace a missing or broken bit holder on your Ryobi P235.

TOOLS:

- [T20 Torx Screwdriver](#) (1)
 - [Phillips #2 Screwdriver](#) (1)
-

Step 1 — Battery



- Push in both push tabs on the battery at the same time.
- ⓘ They are located below the green housing and are in the middle on both sides of the battery.

Step 2



- Pull the battery away from the drill housing while holding in both tabs.

Step 3 — Bit-Holder



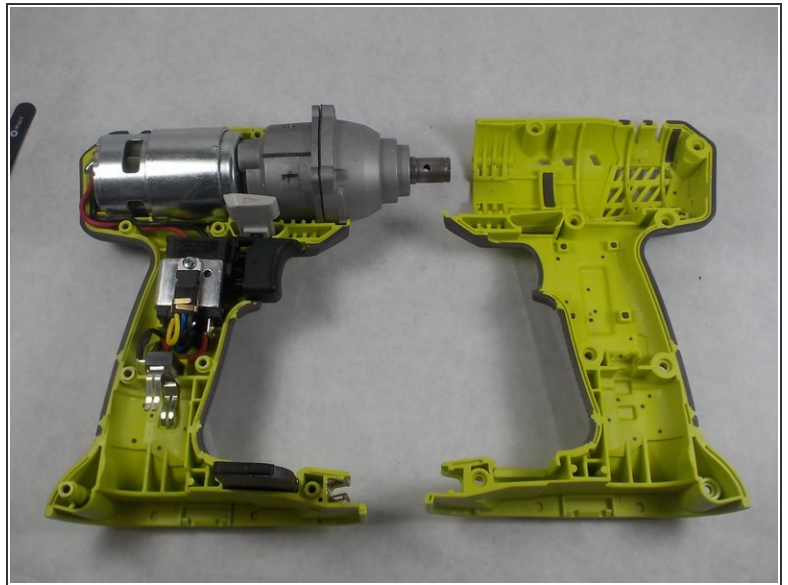
- Use a Phillips #2 screwdriver to remove the eight 16 mm screws that secure the housing.

Step 4



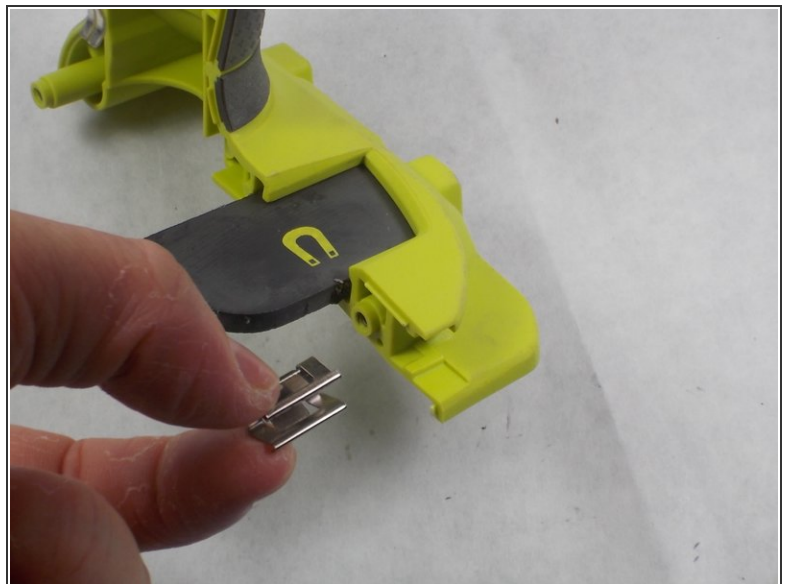
- Use a T20 Torx screwdriver to remove the four 25.4 mm screws that secure the front of the housing.

Step 5



- Open the housing with the data label facing up.

Step 6



- Remove the old bit holder.

To reassemble your device, follow these instructions in reverse order.