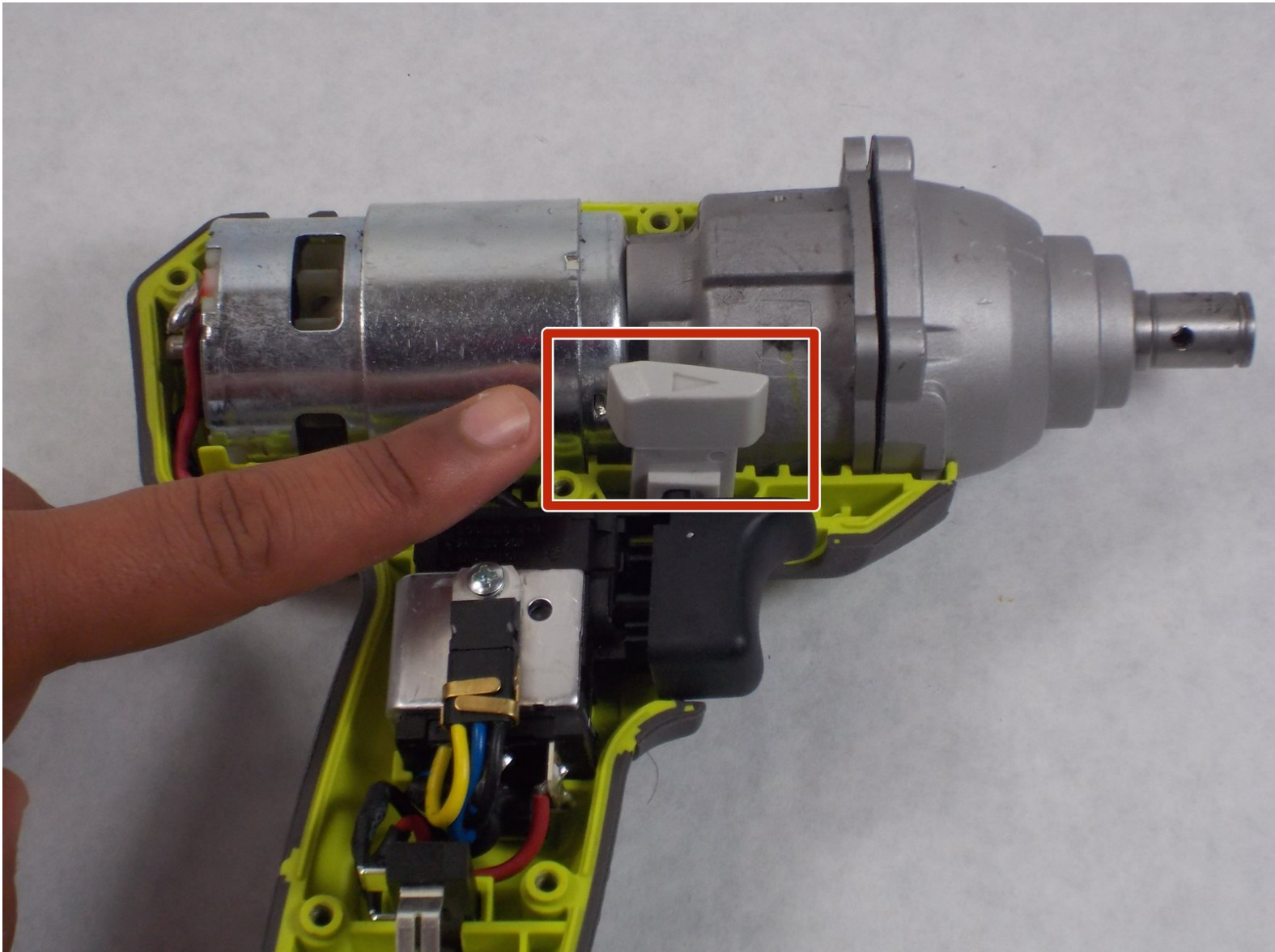




# Ryobi P235 Direction of Rotation Selector Replacement

How to replace a Ryobi P235 direction of rotation selector.

Written By: Justin Godleski



## INTRODUCTION

The direction of rotation selector may not work for multiple reasons.

- The gray plastic forward/reverse piece may be damaged.
- The toggle piece attached to the switch assembly may be damaged.

The drill has to be disassembled to diagnose the problem from the two possible causes. This guide will help to diagnose and solve both problems.



### TOOLS:

- [Phillips #2 Screwdriver](#) (1)
- [T20 Torx Screwdriver](#) (1)
- [Soldering Iron](#) (1)



### PARTS:

- [Battery](#) (1)
- [Direction of rotation selector](#) (1)
- [Switch assembly](#) (1)

## Step 1 — Battery



- Push in both push tabs on the battery at the same time.
- ⓘ They are located below the green housing and are in the middle on both sides of the battery.

## Step 2



- Pull the battery away from the drill housing while holding in both tabs.



### Step 3 — Direction of Rotation Selector



- Use a Phillips #2 screwdriver to remove the eight 16 mm screws that secure the housing.

### Step 4



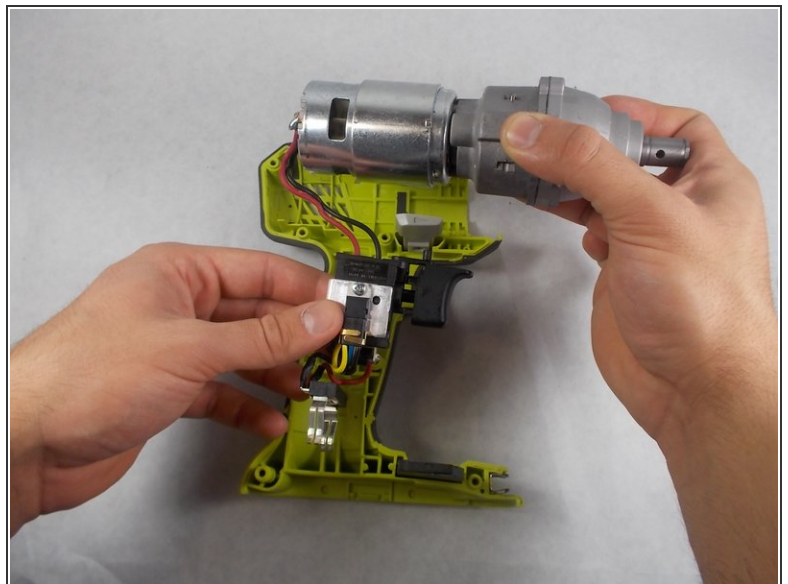
- Use a T20 Torx screwdriver to remove the four 25.4 mm screws that secure the front of the housing.

## Step 5



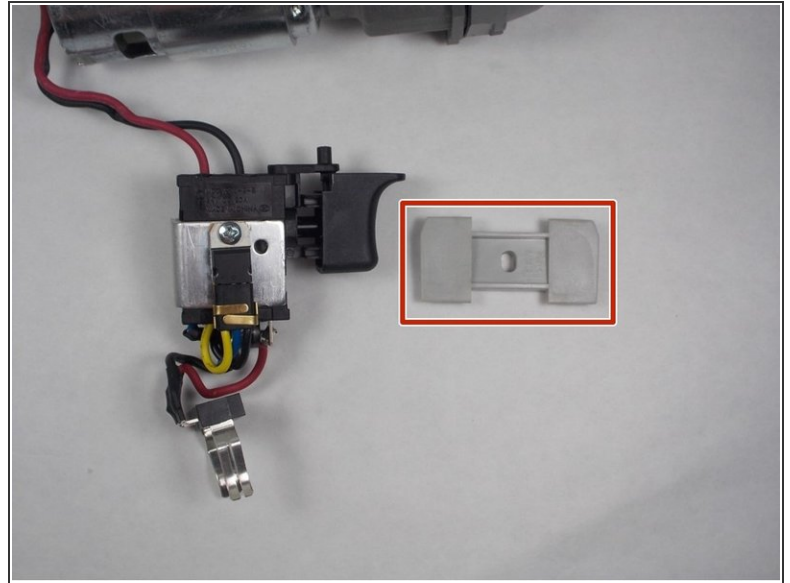
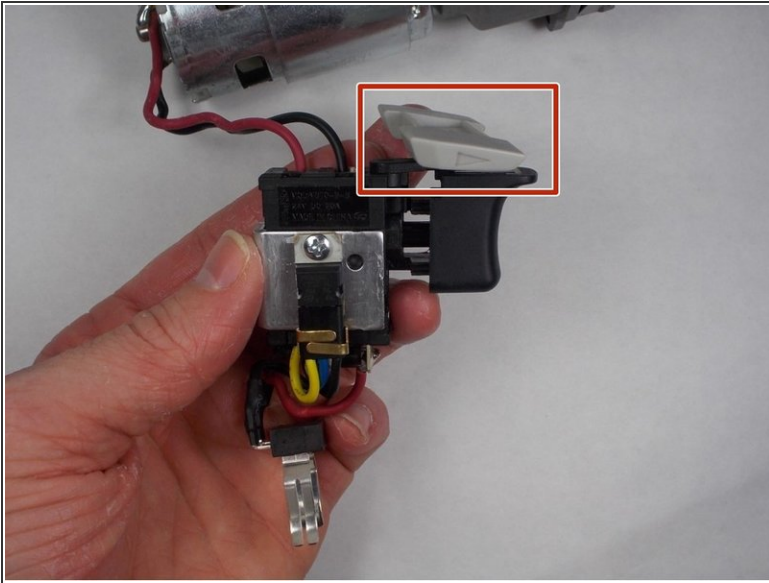
- Open the housing with the data label facing up.

## Step 6



- Lift the internal components out of the housing.

## Step 7



- Remove the gray plastic forward/reverse selector.

To reassemble your device, follow these instructions in reverse order.