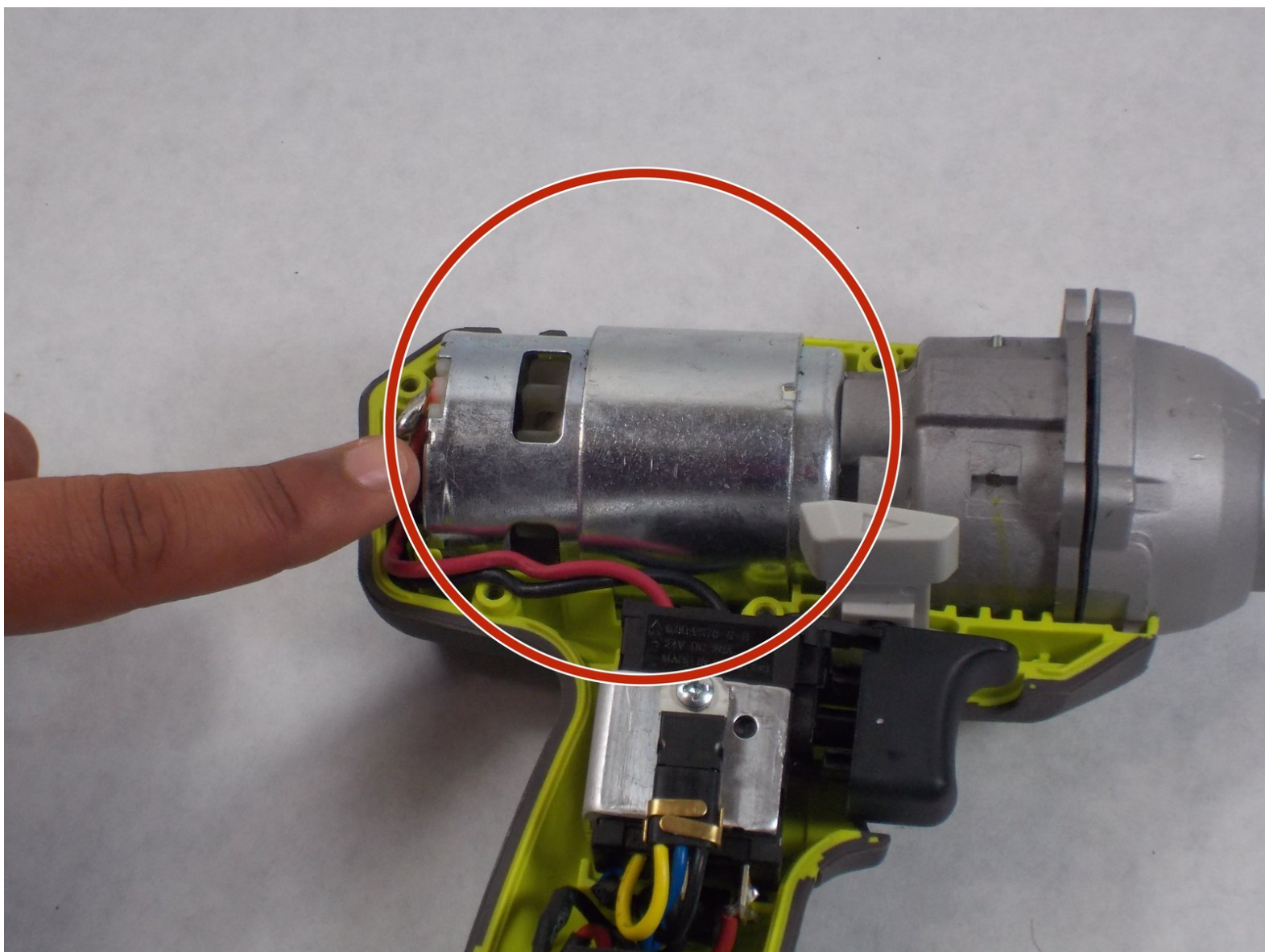




Ryobi P235 Motor Replacement

This guide will detail the replacement of the motor of a Ryobi P235.

Written By: Paul Sousa



INTRODUCTION

Use this guide to replace the motor in your Ryobi P235 impact driver if it is overheating or under powered when the battery is fully charged.

The motor is what converts the power stored in the battery to the physical power used to spin the cam shaft and hammer assembly. Since the motor requires the most steps and is the most difficult part to replace, it is important to keep an eye out for any cracked or broken components while taking apart your impact driver.

When you reach steps 12 and 13, the wires are soldered to the motor so a soldering iron will need to be used to disconnect them from the old motor and then reattach them to the new one.



TOOLS:

- [Phillips #2 Screwdriver](#) (1)
 - [T20 Torx Screwdriver](#) (1)
 - [Soldering Iron](#) (1)
-

Step 1 — Battery



- Push in both push tabs on the battery at the same time.
- ⓘ They are located below the green housing and are in the middle on both sides of the battery.

Step 2



- Pull the battery away from the drill housing while holding in both tabs.

Step 3 — Motor



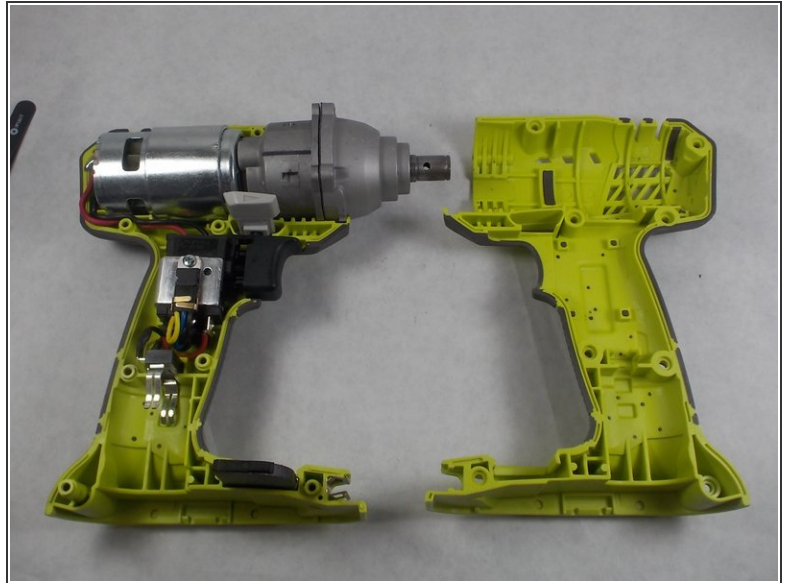
- Use a Phillips #2 screwdriver to remove the eight 16 mm screws that secure the housing.

Step 4



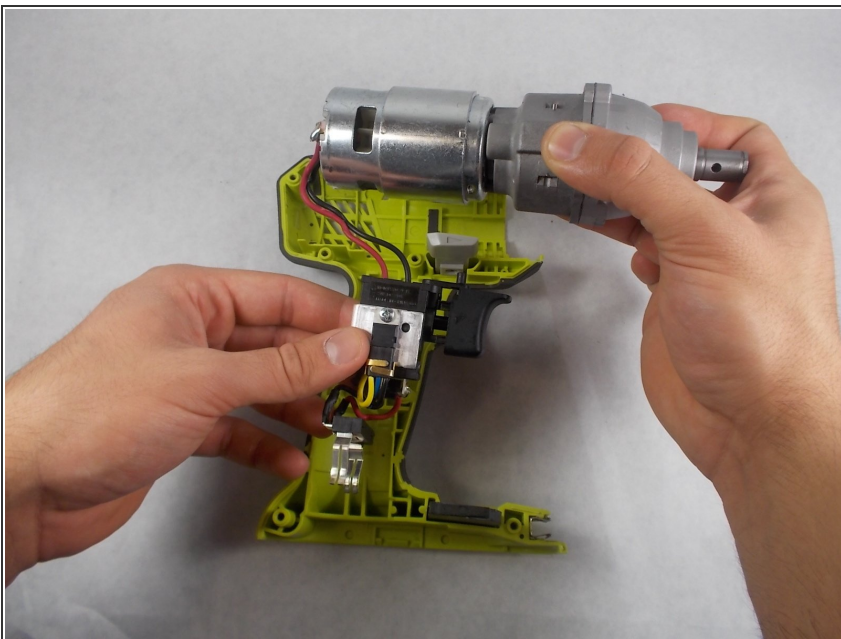
- Use a T20 Torx screwdriver to remove the four 25.4 mm screws that secure the front of the housing.

Step 5



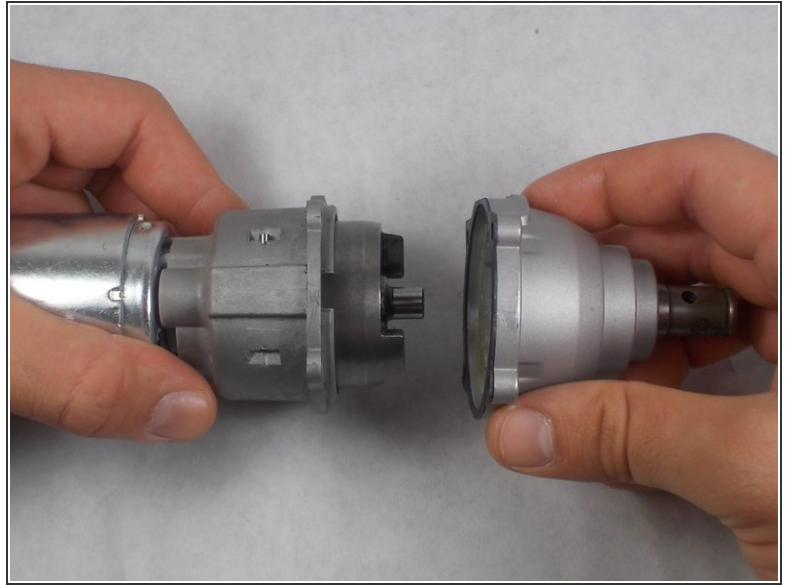
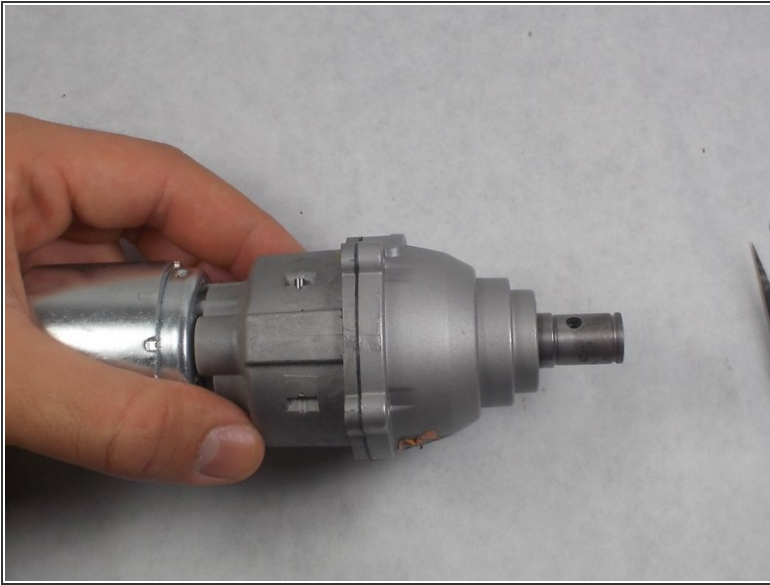
- Open the housing with the data label facing up.

Step 6



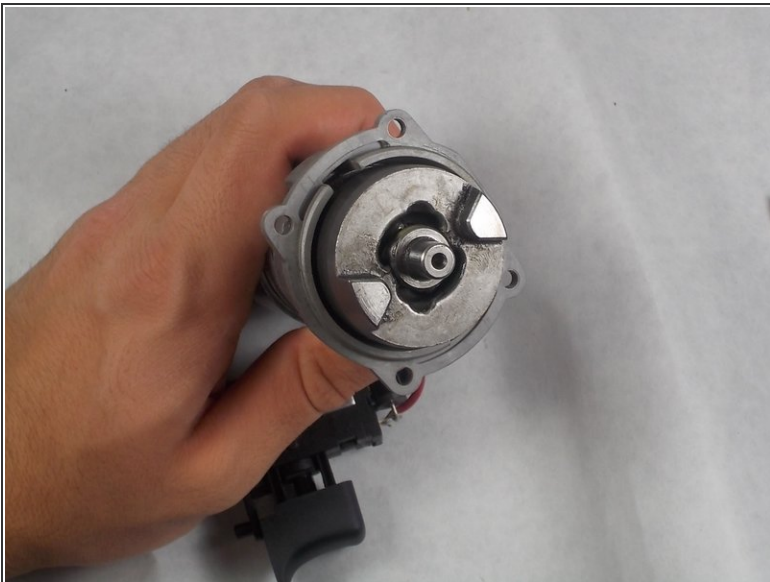
- Lift the motor and chuck assembly out of the housing.

Step 7



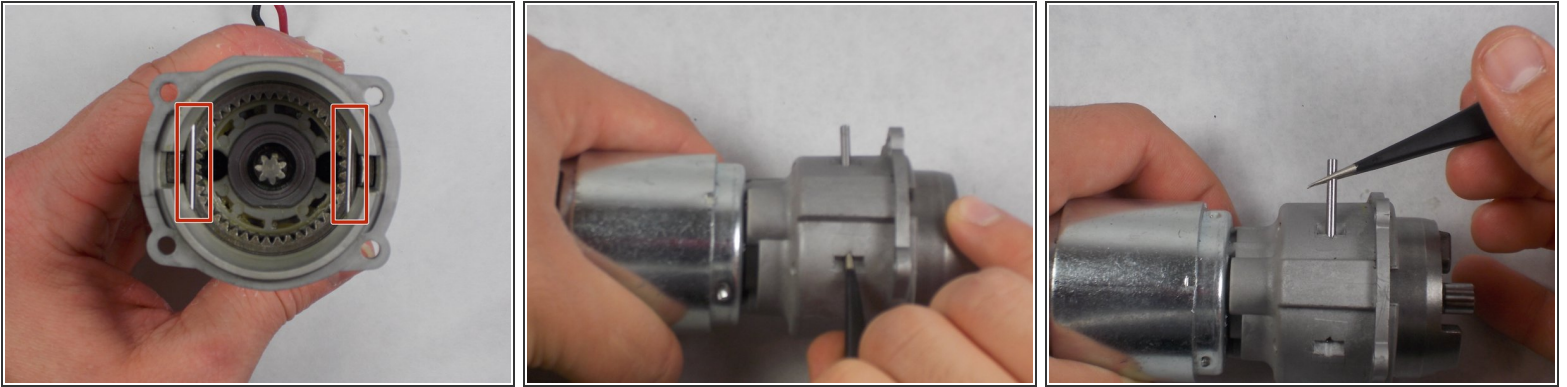
- Remove the gear case and sleeve bearing assembly from the inner case assembly.

Step 8



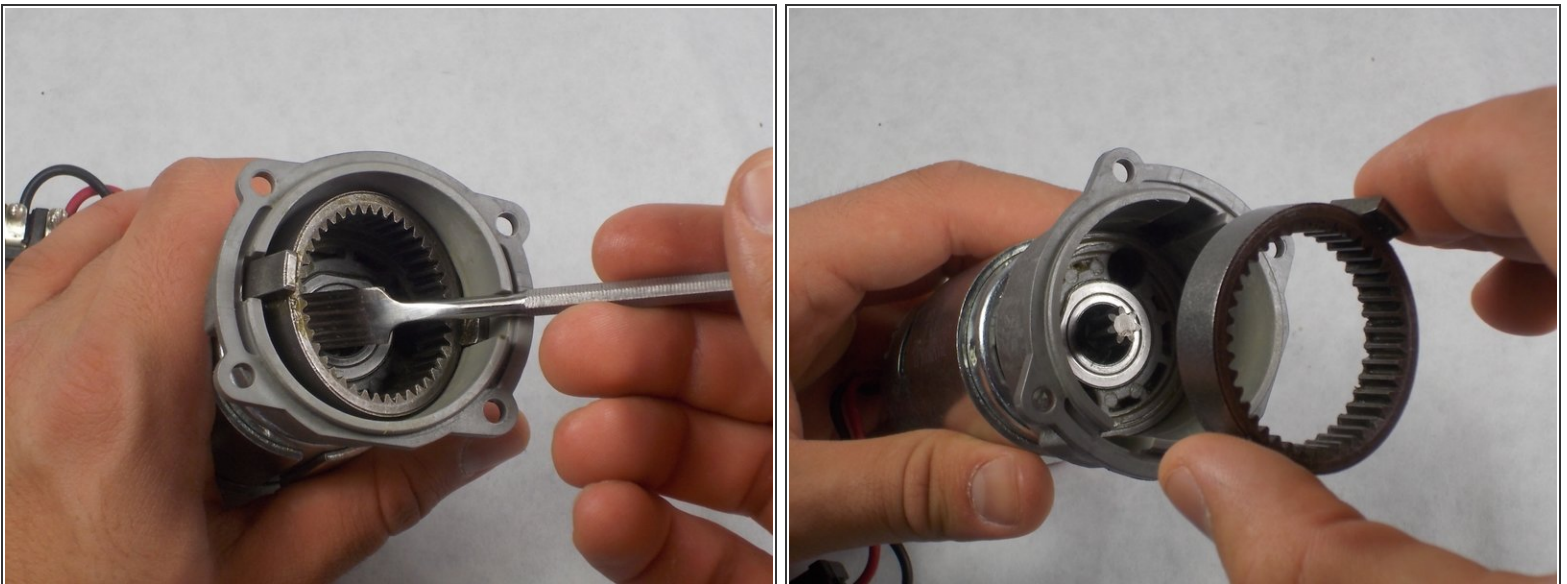
- Remove the cam shaft and motor assembly.

Step 9



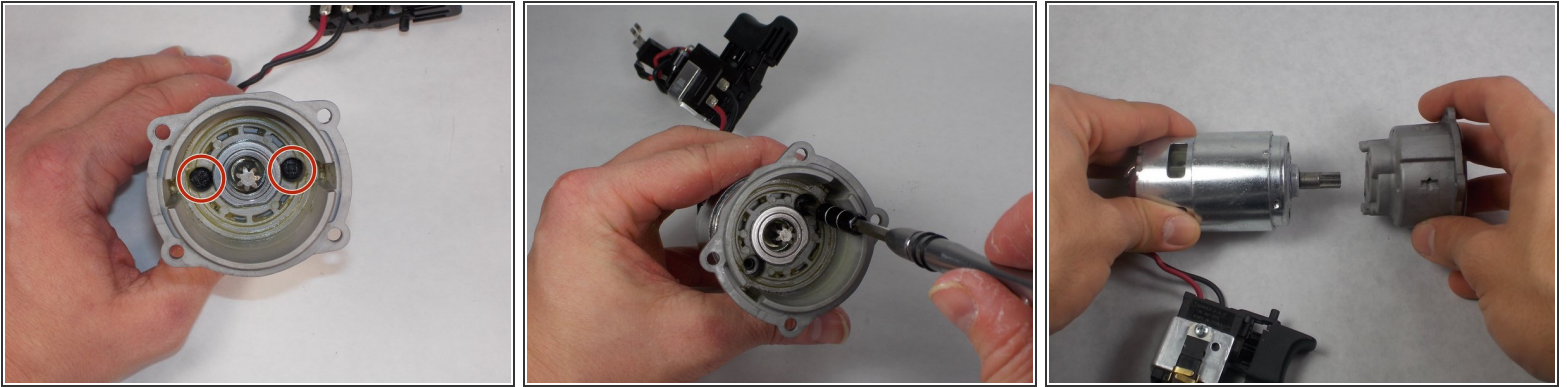
- Remove the metal pins on each side of the inner case assembly.
- i** It is easiest to push the pin through the opening from one side and once enough of the pin is through, grab it with the tweezers and pull it the rest of the way through.
- ✦** When reassembling, make sure the pin goes in straight and makes it out the other side, rather than going in diagonally and into the inner case assembly.

Step 10



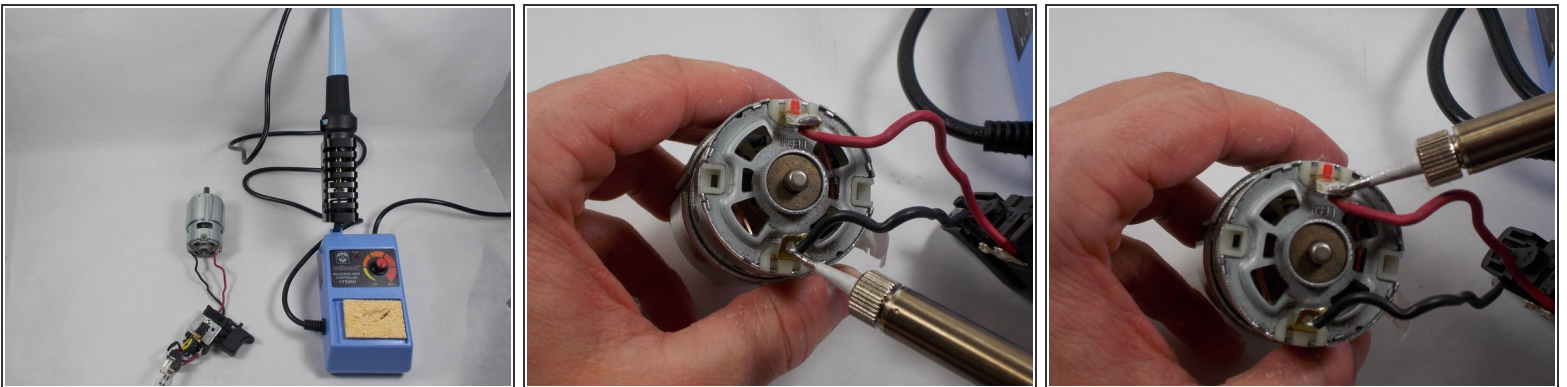
- Remove the ring gear.
- i** To help lift the ring gear out of the inner case assembly, wedge the spudger under one side, moving it up by a little, then switch to the other side and repeat until the gear ring is out.

Step 11



- Remove the two 8mm screws and spring washers connecting the motor to the inner case assembly.
- Separate the two parts.

Step 12



- Use a soldering iron to remove the black and red wires connecting the motor to the trigger assembly.
- ☑ Use the soldering iron to connect the new motor to the trigger assembly.
- ☑ Make sure the red wire connects to the lead with the red mark on it.

To reassemble your device, follow these instructions in reverse.