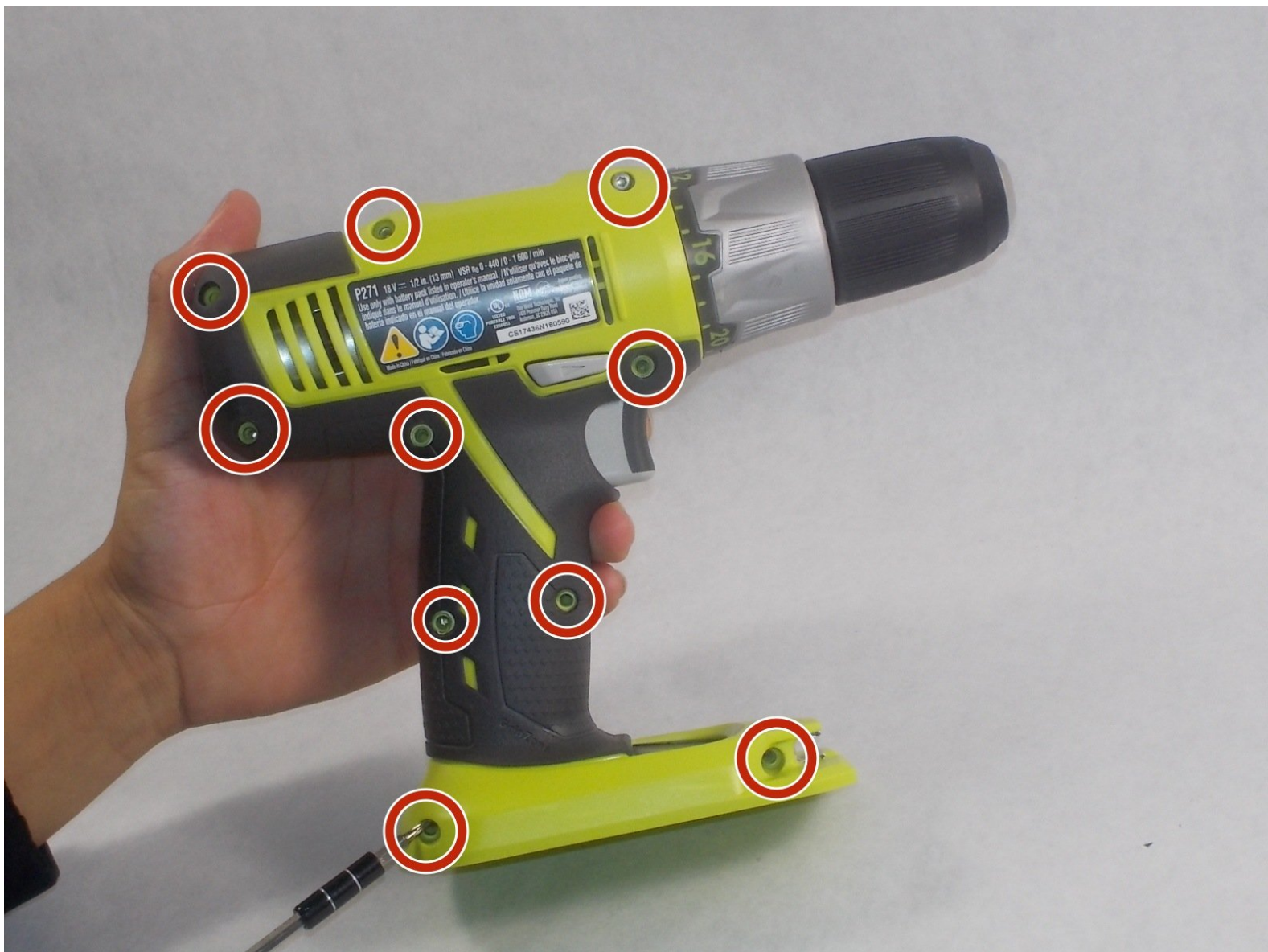




# Ryobi P271 Reverse Switch Replacement

This guide will assist the user in repairing a broken or obstructed reverse switch on the Ryobi P271 drill.

Written By: nathan krehbiel



---

## INTRODUCTION

This guide will help the user disassemble the drill, replace the broken or worn out reverse switch, and reassemble the drill.

---

### TOOLS:

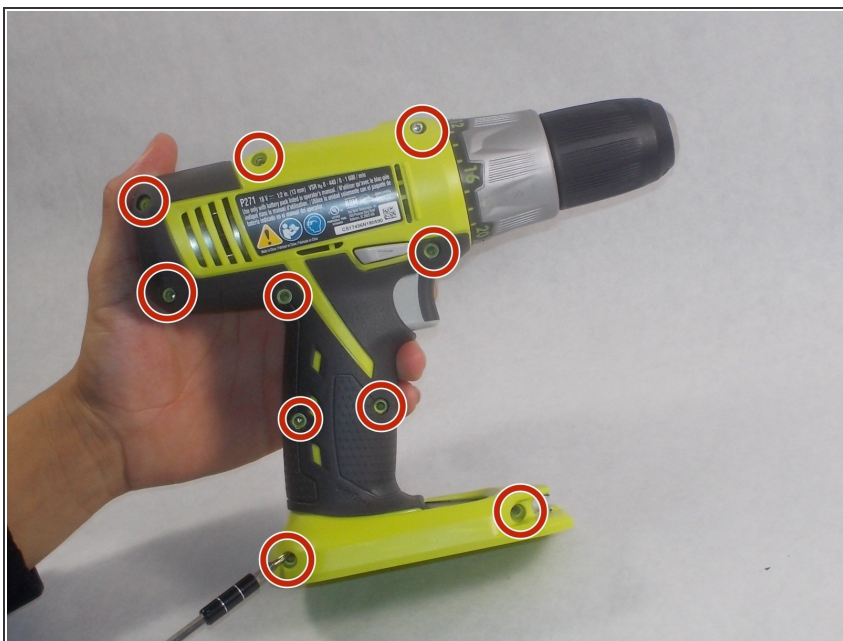
- [Essential Electronics Toolkit](#) (1)
-

## Step 1 — Battery



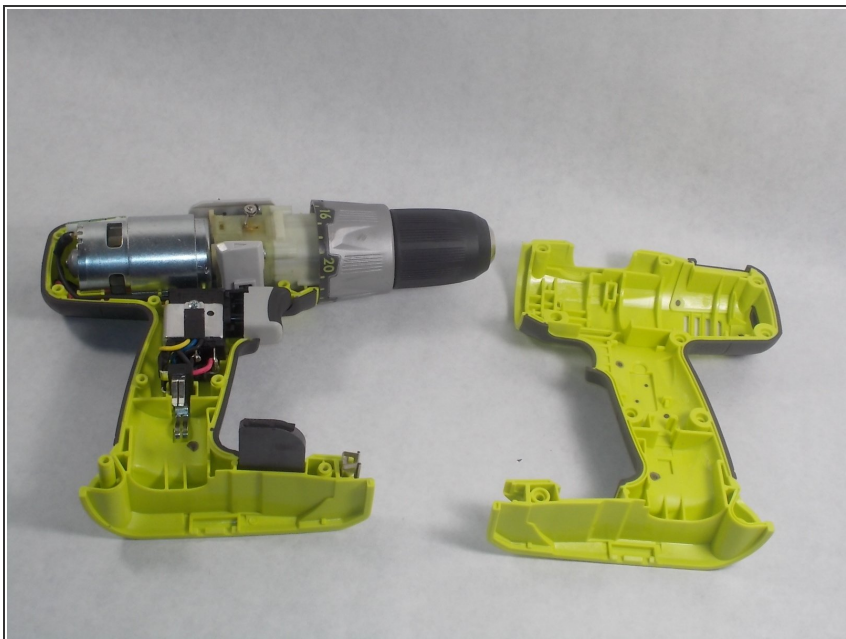
- Detach the battery unit from the drill body by pressing the battery release buttons on both sides of the unit and pulling outwards.

## Step 2 — Reverse Switch



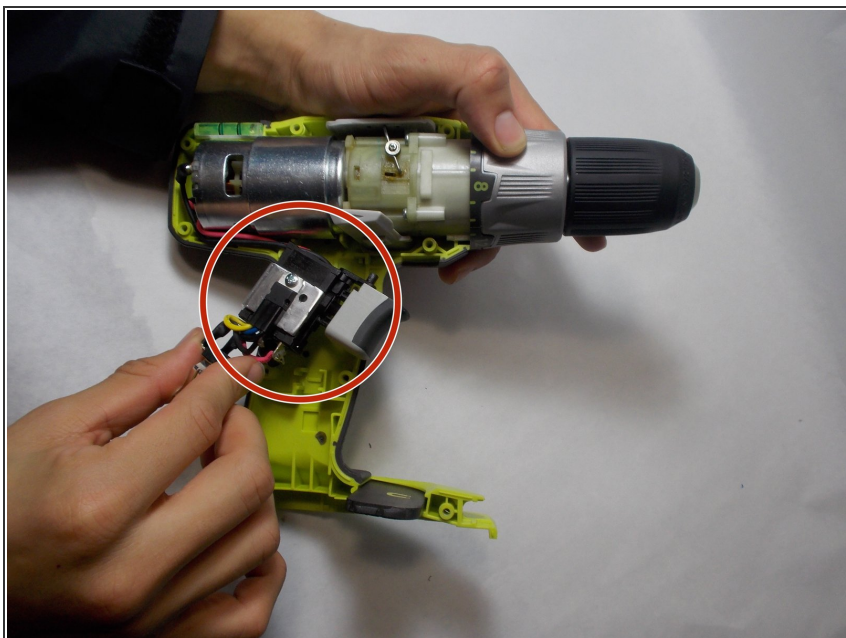
- Remove all ten Torx screws from the drill's case.

### Step 3



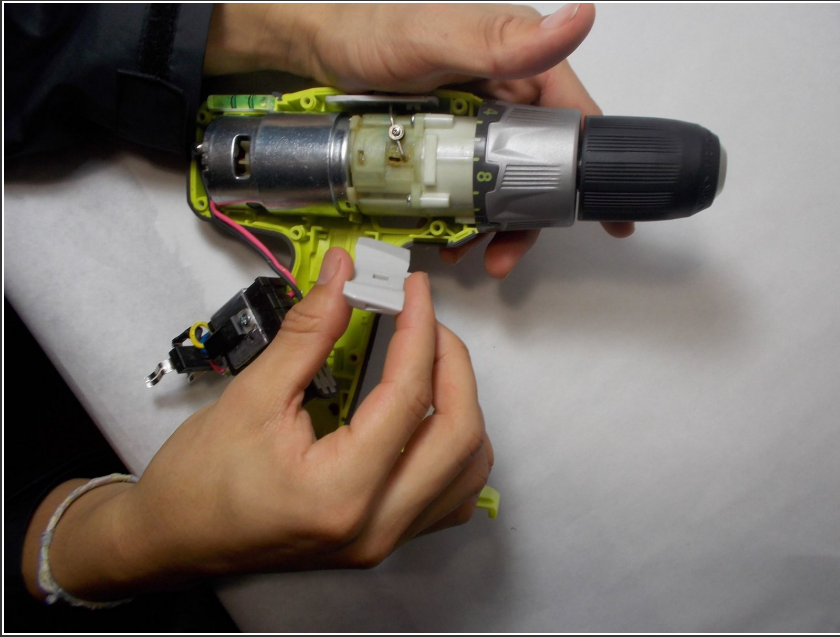
- Gently pull the casing apart.
- ⓘ Separating the casing too quickly could cause internals to become loose, and not easily seat together upon reassembly.

### Step 4



- Remove the trigger so that it can fully expose the reverse switch.

## Step 5



- Firmly grab the reverse switch and pull on it until it comes out of its socket.

To reassemble your device, follow these instructions in reverse order.