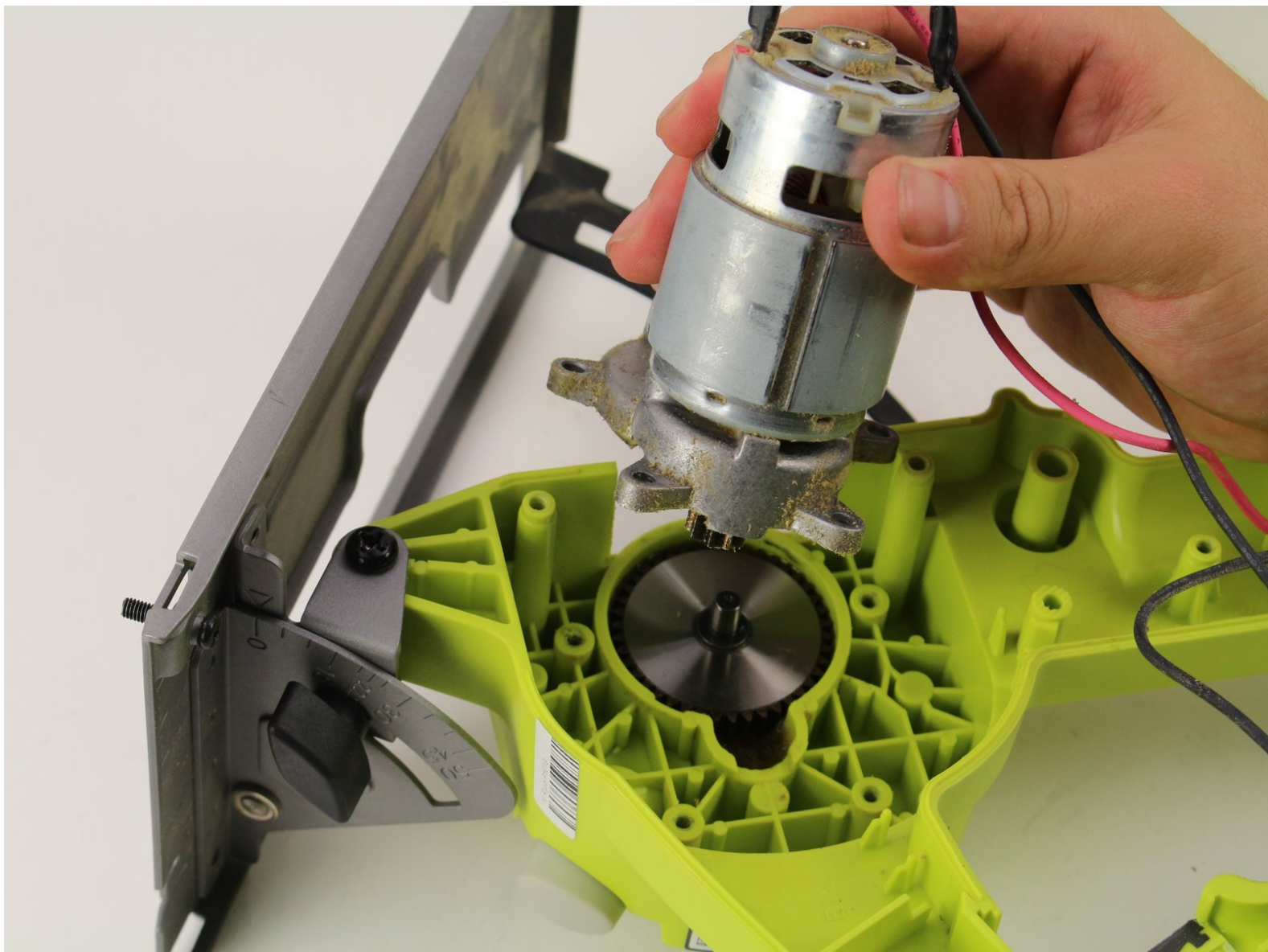




Ryobi P501G Motor Replacement

This guide will aid you in the process of changing out an old or no-longer-working motor and replacing it with a new one in your Ryobi P501G.

Written By: Sophia Arias



INTRODUCTION

Use this guide to replace the motor in your Ryobi P501G.



TOOLS:

- [T5 Torx Screwdriver](#) (1)
-

Step 1 — Motor



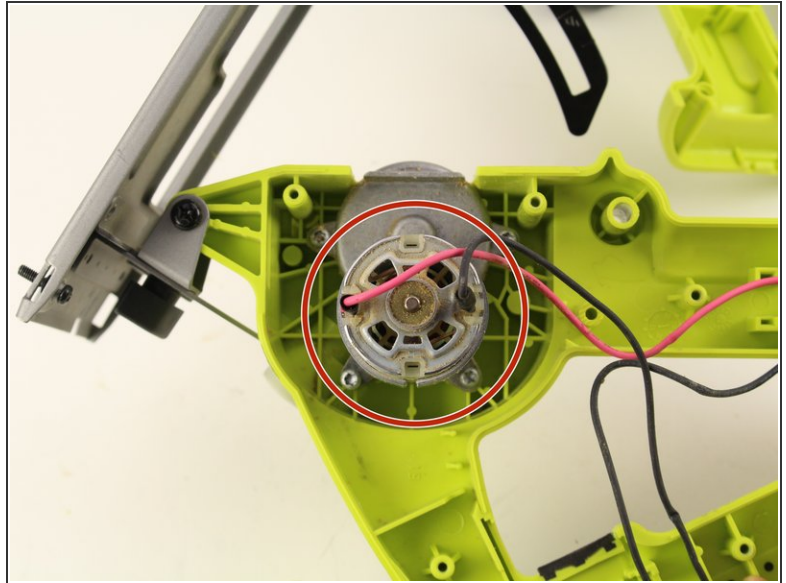
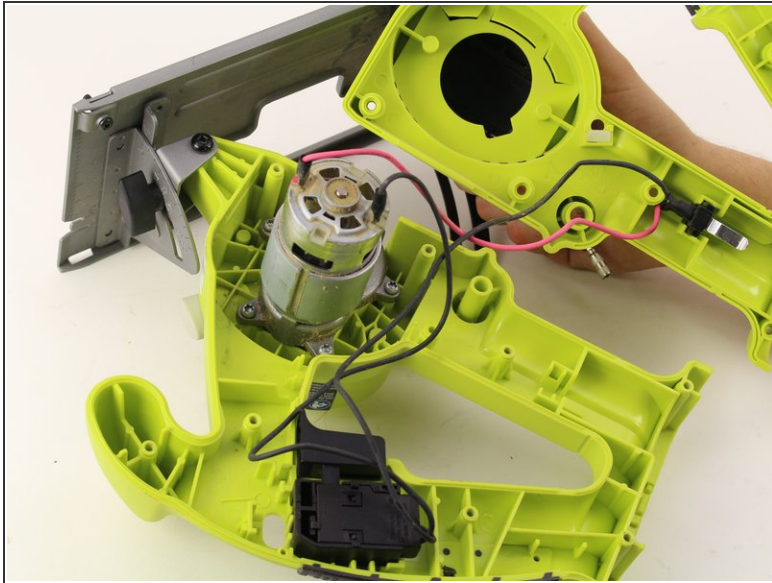
- Locate the screws at the top face of the saw, on the green plastic surface covering.

Step 2



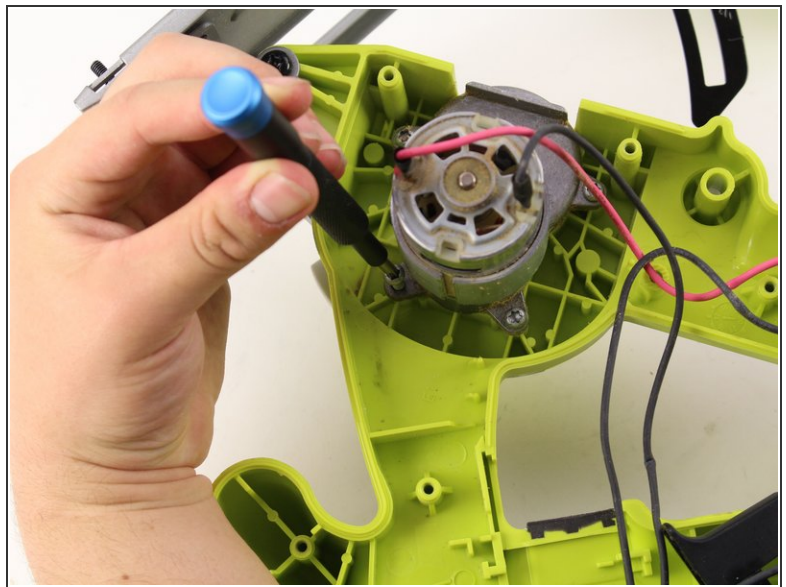
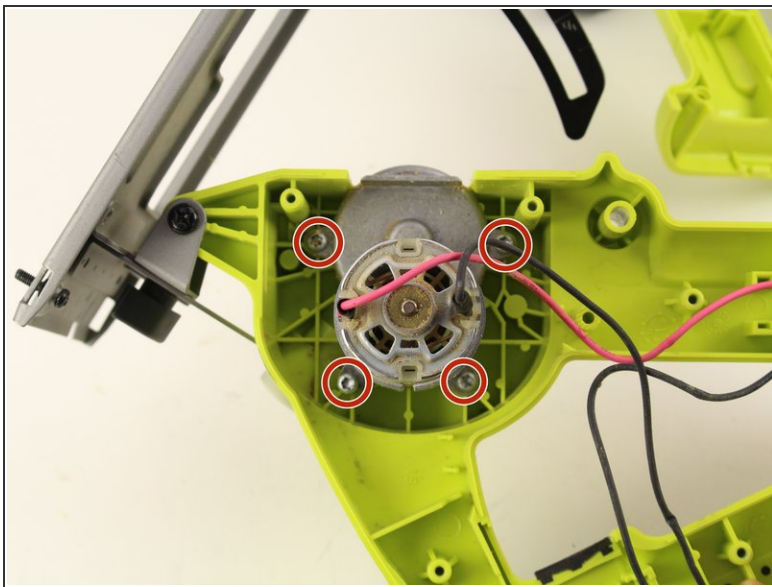
- Locate the eight outer screws of the plastic green encasement. They are marked in red in the picture.
- Using a T5 torx screwdriver, unscrew all the holes, taking care not to lose any!

Step 3



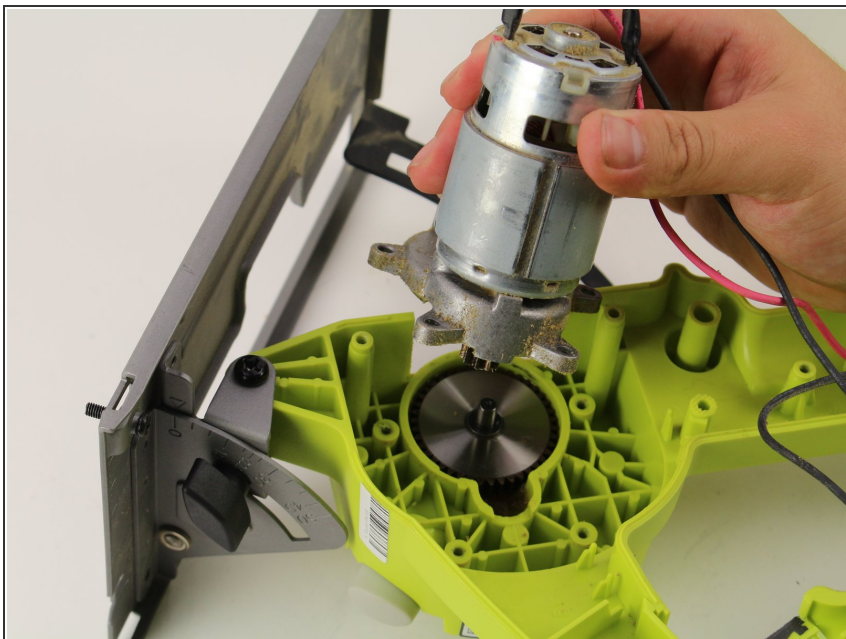
- Open up the top side of the encasement to reveal the internal parts of the saw.
- Locate the motor.

Step 4



- Using a standard screwdriver, unscrew all four of the screws to free the motor from the encasement.

Step 5



- Remove the motor and replace with a new one if needed.
- ⓘ Be careful when handling the motor- it may be very dirty/greasy. You might want to wear gloves for this step!

To reassemble your device, follow these instructions in reverse order.