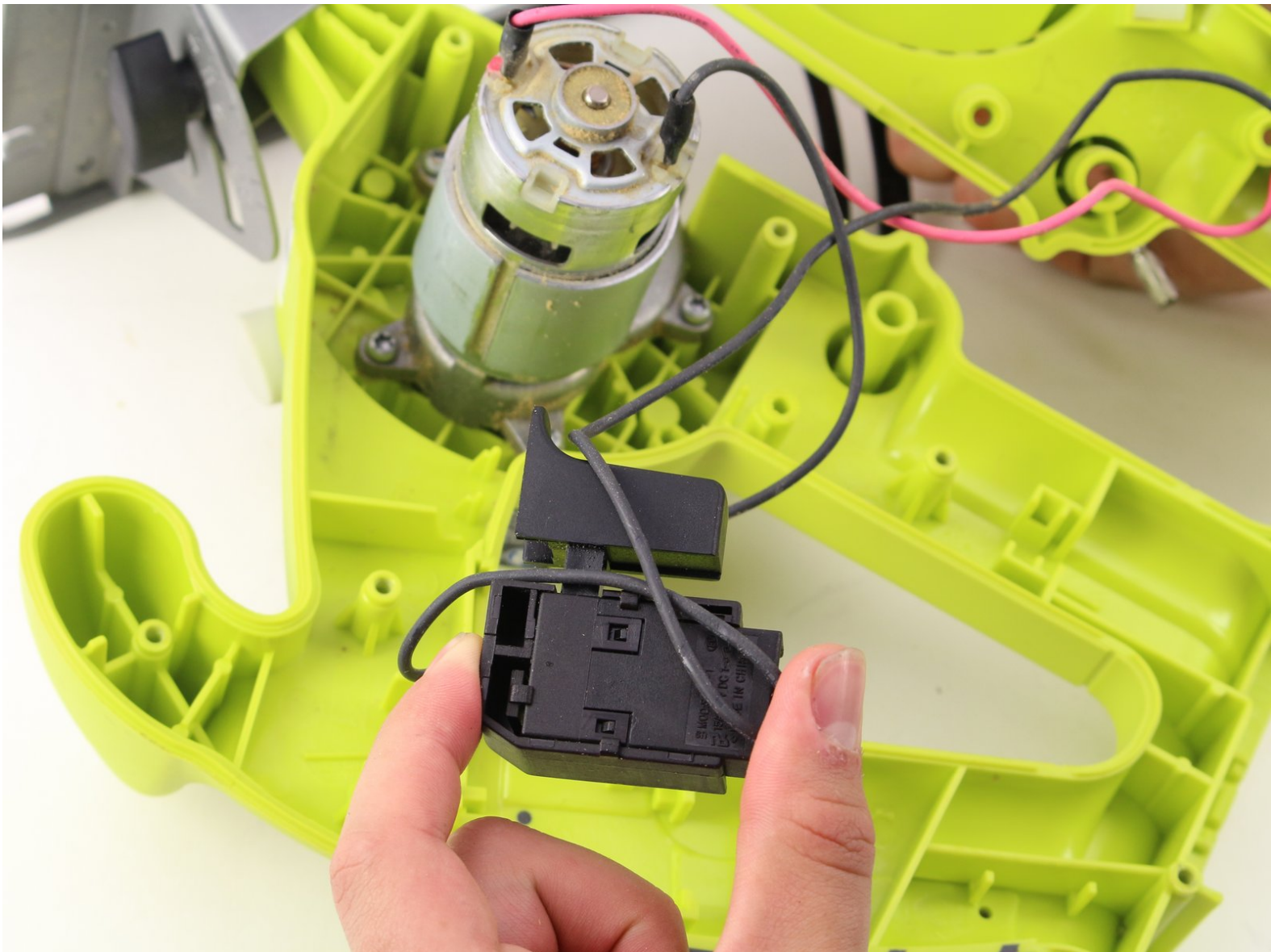




Ryobi P501G Trigger Replacement

How to replace the finger trigger in your Ryobi P501G.

Written By: Sophia Arias



INTRODUCTION

Use this guide to replace the finger trigger in your Ryobi P501G.



TOOLS:

- [T5 Torx Screwdriver](#) (1)
-

Step 1 — Shell



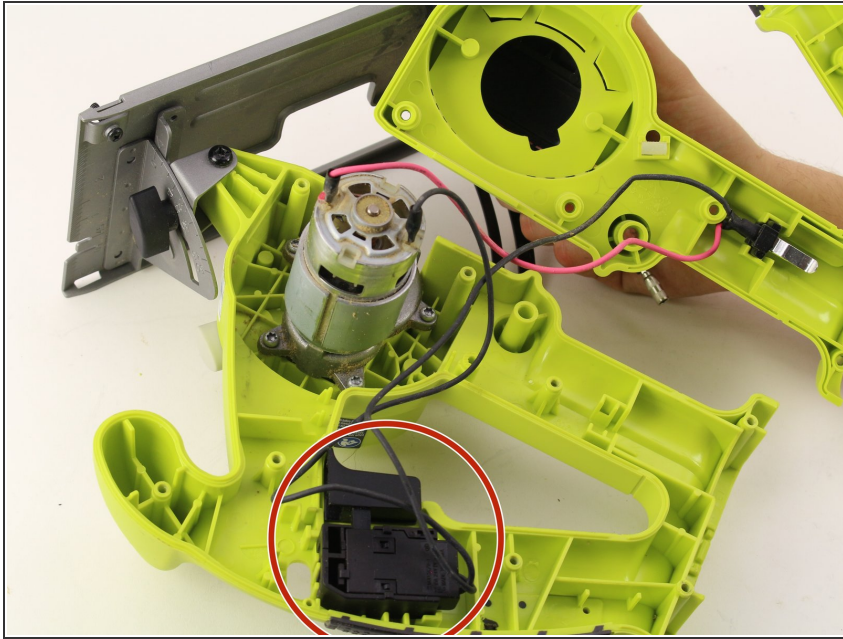
- Remove the three screws on the inside base of the metal casing of the blade.
- Pull the metal blade casing off of the Ryobi P501G body.

Step 2



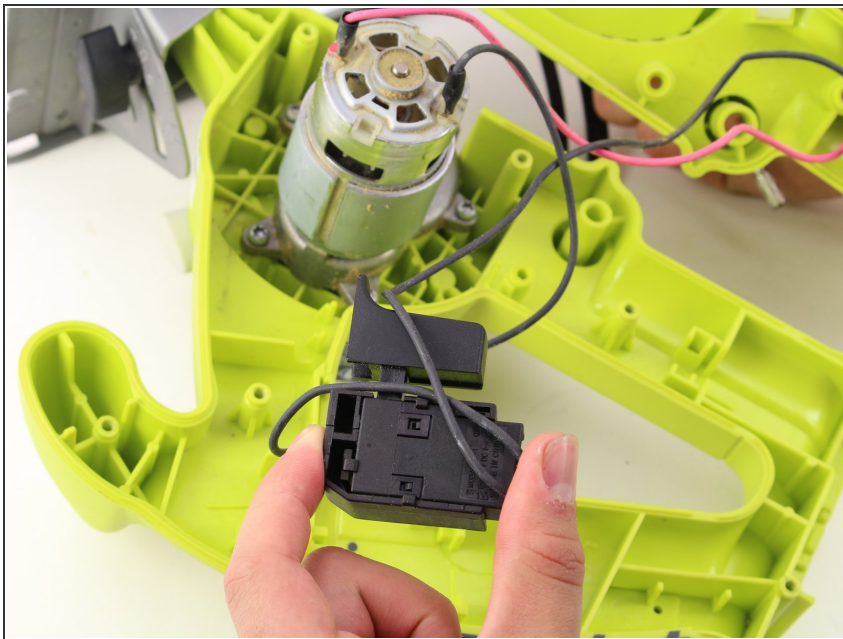
- Remove all of the screws located on the right side of the saw.
- Separate the right side of the saw from the left side by pulling away once all of the screws are removed.
- Pull back the shell to access the housed parts underneath.

Step 3 — Trigger



- After opening the shell, locate the black plastic trigger on the handle of the device.

Step 4



- Remove the black wiring and the trigger is free! Reposition it however you'd like or switch it out with a new one.
- ⓘ Make sure the trigger is snug and exactly where you want it. A dislodged trigger can be very dangerous in a power saw!

To reassemble your device, follow these instructions in reverse order.