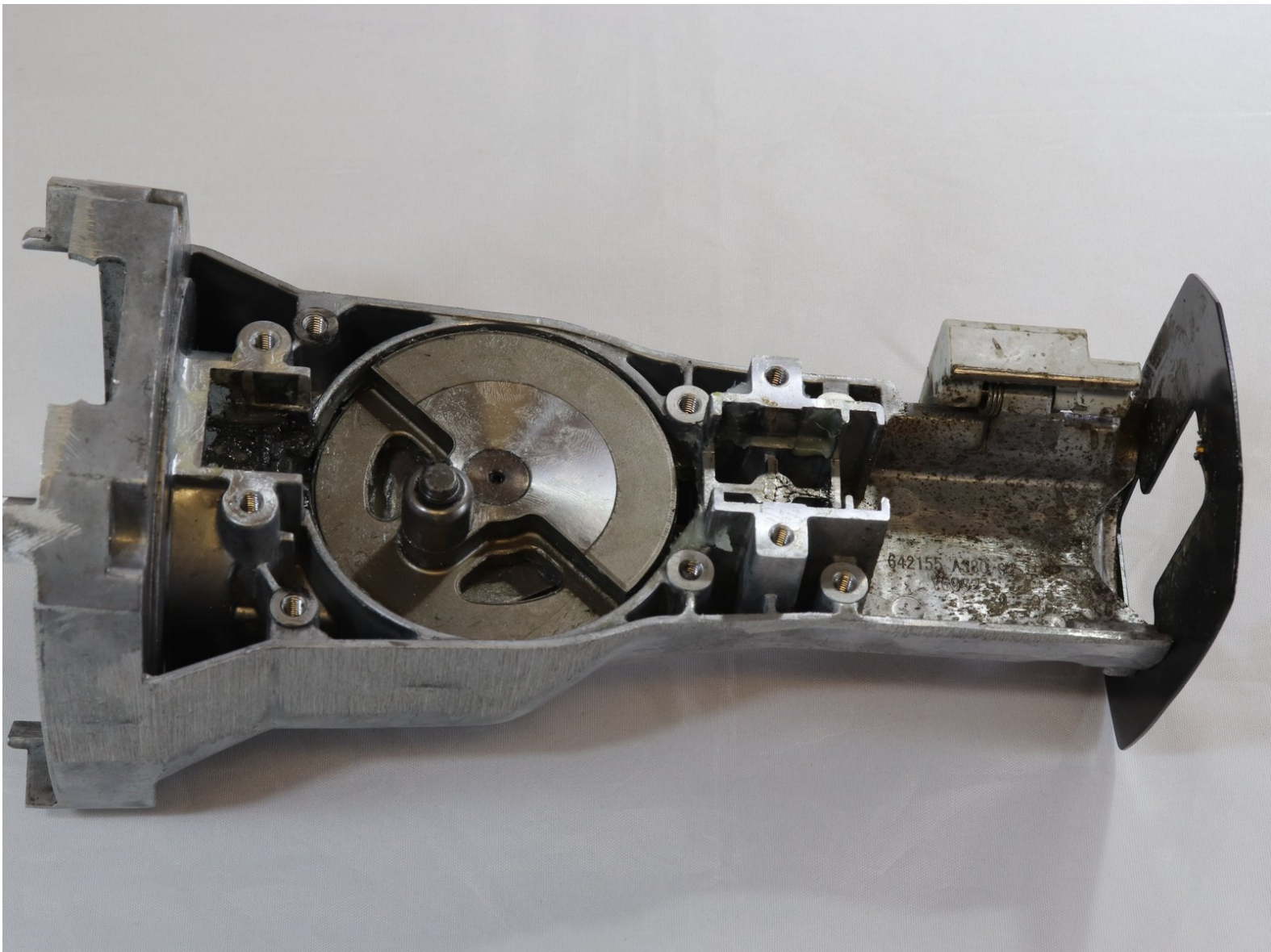




# Ryobi RJ1861V Assembly Bar Bearing Replacement

Over time the assembly bearing can become worn, cracked, or stuck, this guide shows users how to replace a bad bearing.

Written By: Morgan Doyle





## TOOLS:

- [T5 Torx Screwdriver](#) (1)
  - [Tweezers](#) (1)
-

## Step 1 — Saw Bar Assembly



- Unscrew the screw holding the shoe in on the back side:
- One 8 mm Torx T5 screw

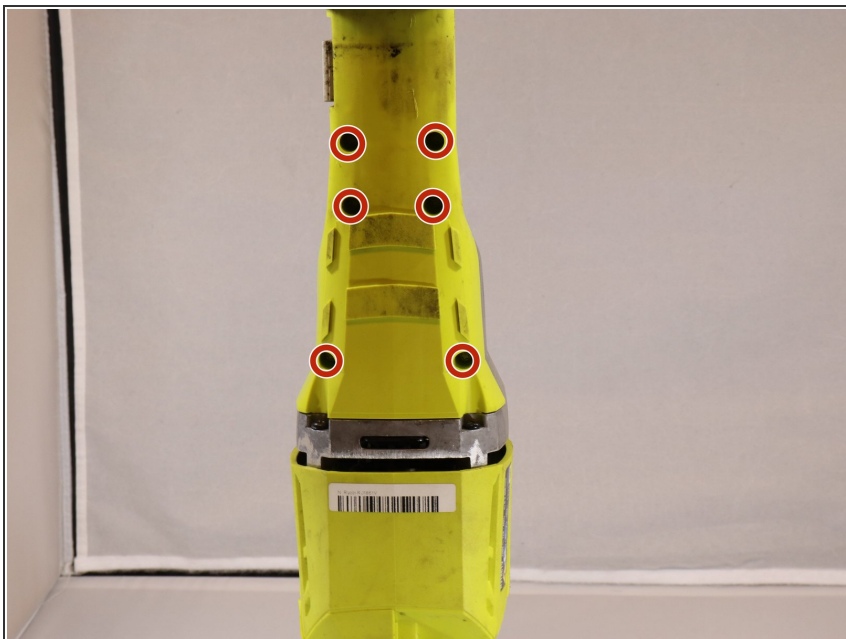
## Step 2



- Begin to remove rubber sleeve. You may have to use some force as it has a tight fit.
- Indicated in the photo below is the rubber sleeve removed.



### Step 3



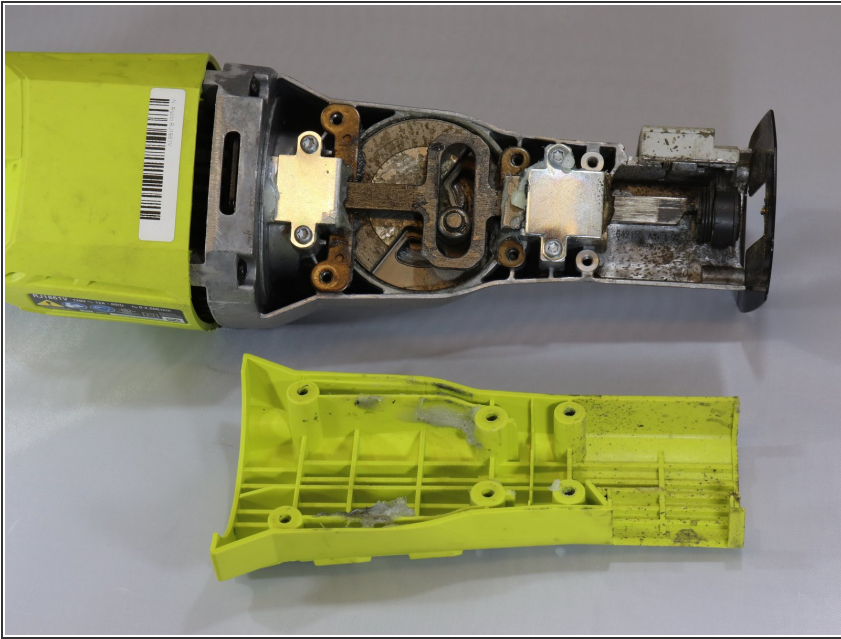
- After sleeve is removed begin to remove the six screws on the back of the device.
- Six Torx T5 Screws

### Step 4



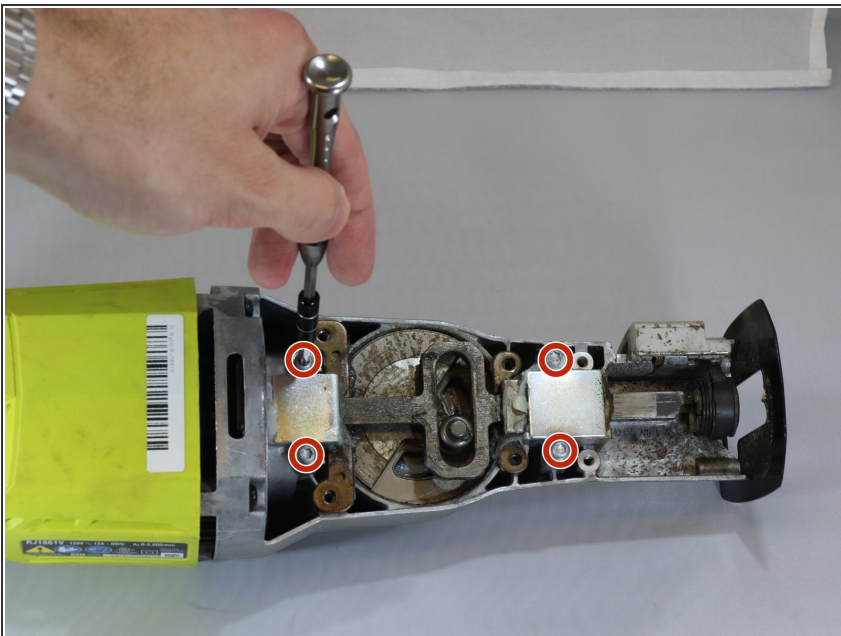
- Using a screw driver begin to unscrew the 4 screws on the top. There will be two screws on each side of the device.
- Four Torx T5 Screws

## Step 5



- Remove the backside panel to expose the internal components.

## Step 6



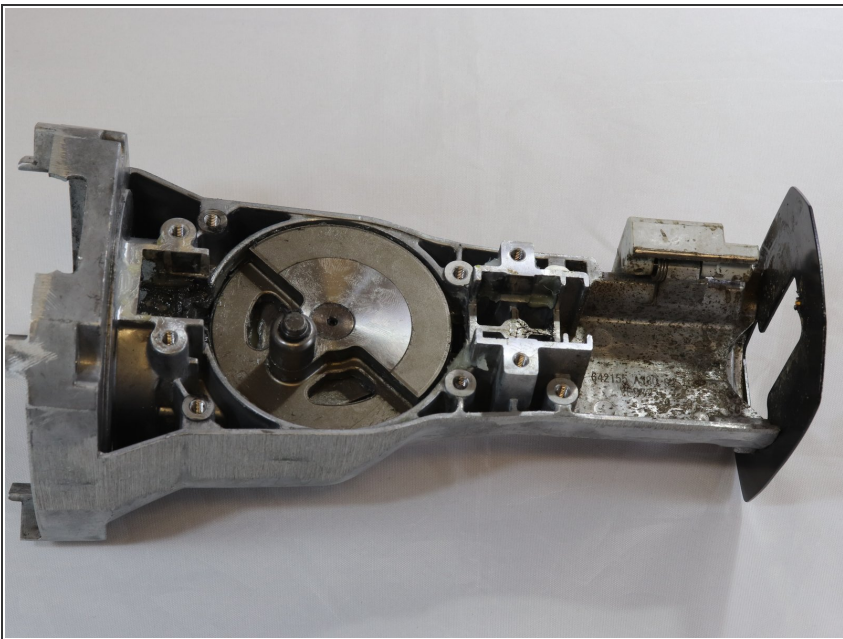
- Unscrew the four T5 Torx screws that are holding the assembly bar in place.

## Step 7



- After all screws removed, the assembly bar can be removed and replaced with ease.

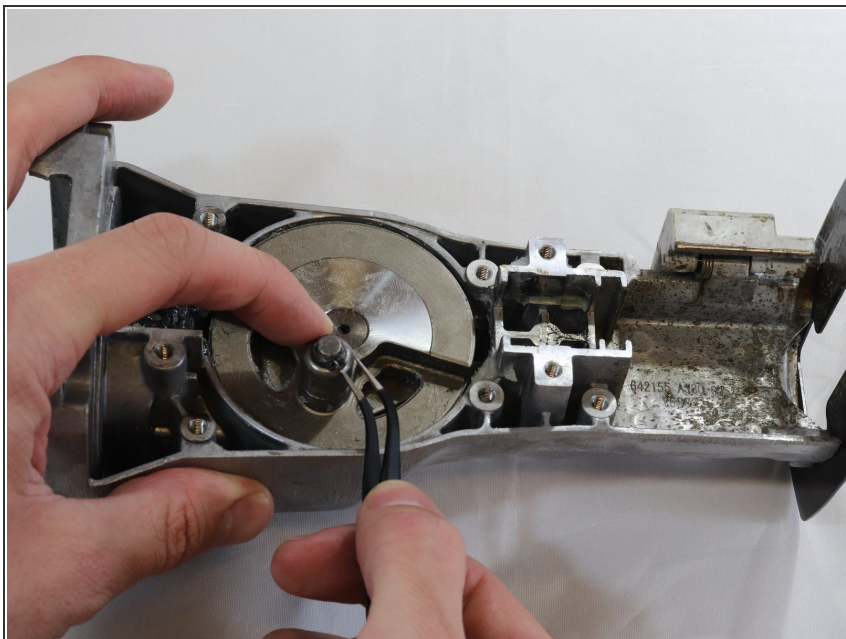
## Step 8 — Assembly Bar Bearing



- Begin with the top of the device facing up.

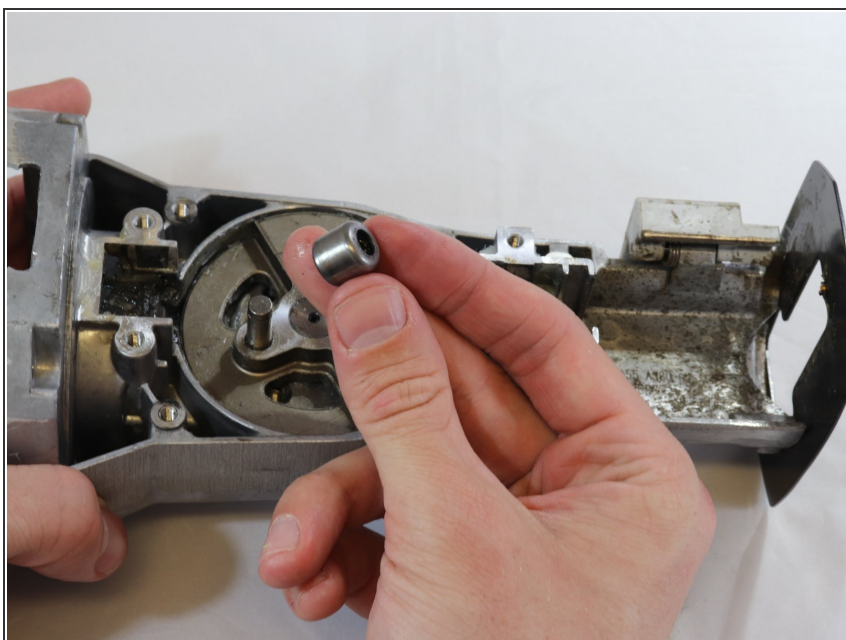


## Step 9



- Insert needle nose pliers to remove the retaining pin at the top of the bearing.

## Step 10



- Once the retaining pin has been removed, pull off the damaged bearing and insert a new one.

To reassemble your device, follow these instructions in reverse order.