



Ryobi RJ1861V Motor Housing Replacement

In the below guide we will provide a step-by-step replacement for the Ryobi RJ1861V motor housing.

Written By: Ryan Quinlivan





TOOLS:

- [T5 Torx Screwdriver](#) (1)
- [Tweezers](#) (1)



PARTS:

- [Motor Assembly Housing](#) (1)

Step 1 — Saw Bar Assembly



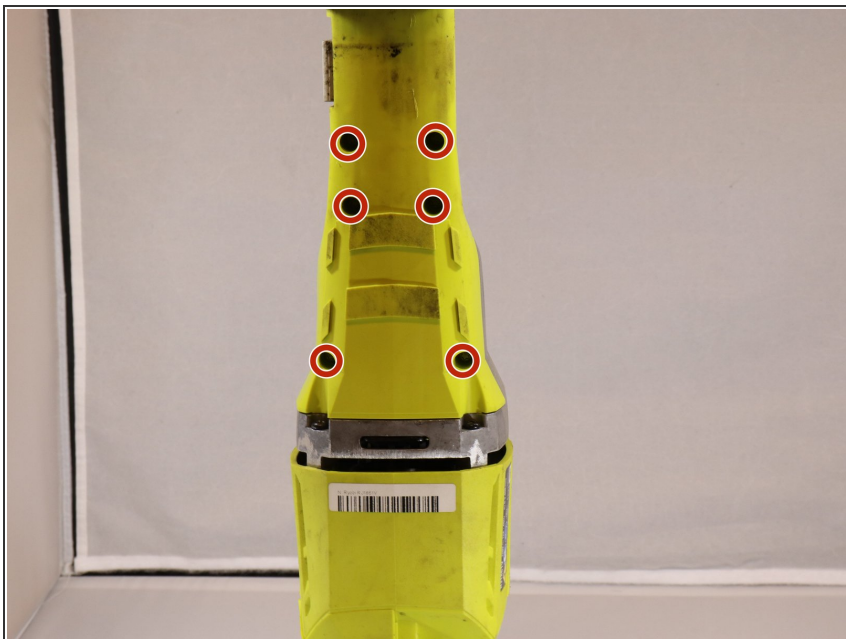
- Unscrew the screw holding the shoe in on the back side:
- One 8 mm Torx T5 screw

Step 2



- Begin to remove rubber sleeve. You may have to use some force as it has a tight fit.
- Indicated in the photo below is the rubber sleeve removed.

Step 3



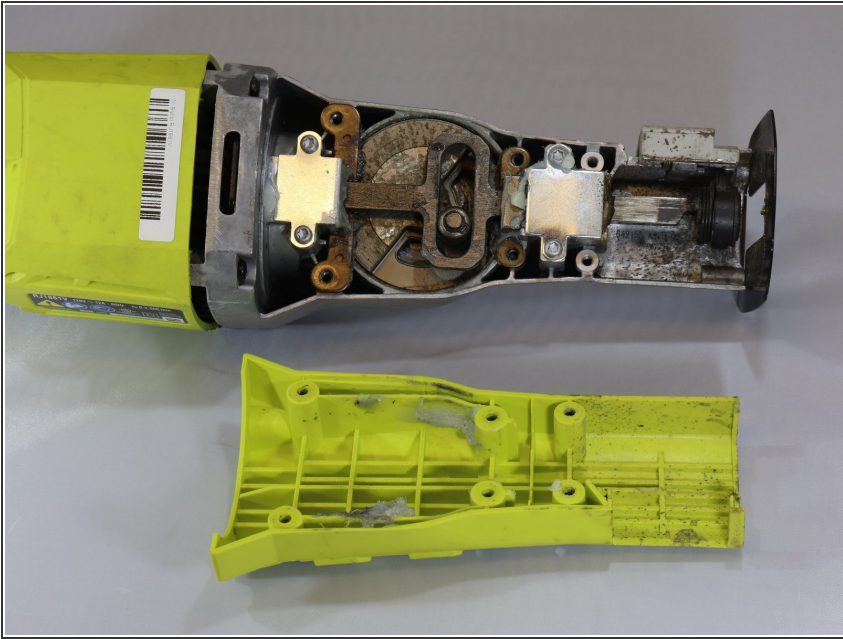
- After sleeve is removed begin to remove the six screws on the back of the device.
- Six Torx T5 Screws

Step 4



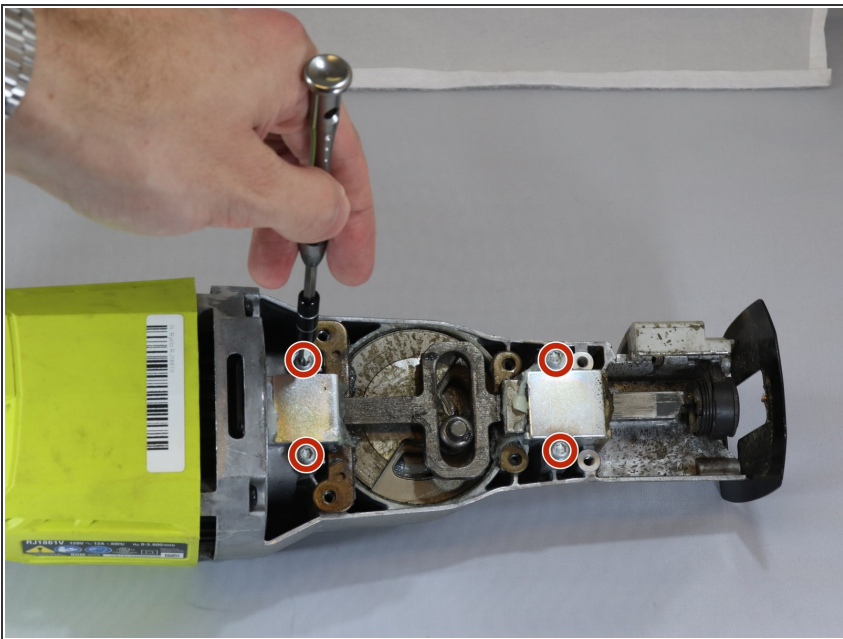
- Using a screw driver begin to unscrew the 4 screws on the top. There will be two screws on each side of the device.
- Four Torx T5 Screws

Step 5



- Remove the backside panel to expose the internal components.

Step 6



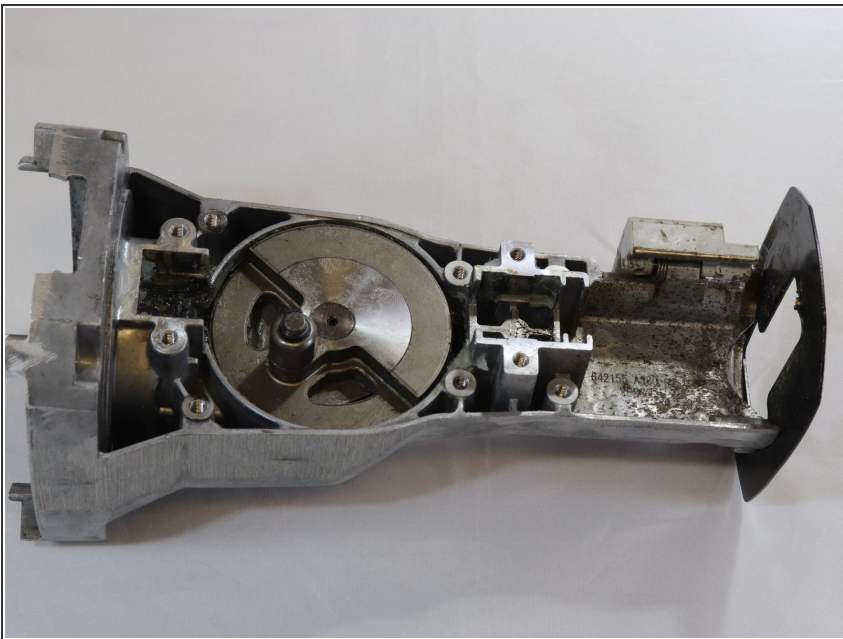
- Unscrew the four T5 Torx screws that are holding the assembly bar in place.

Step 7



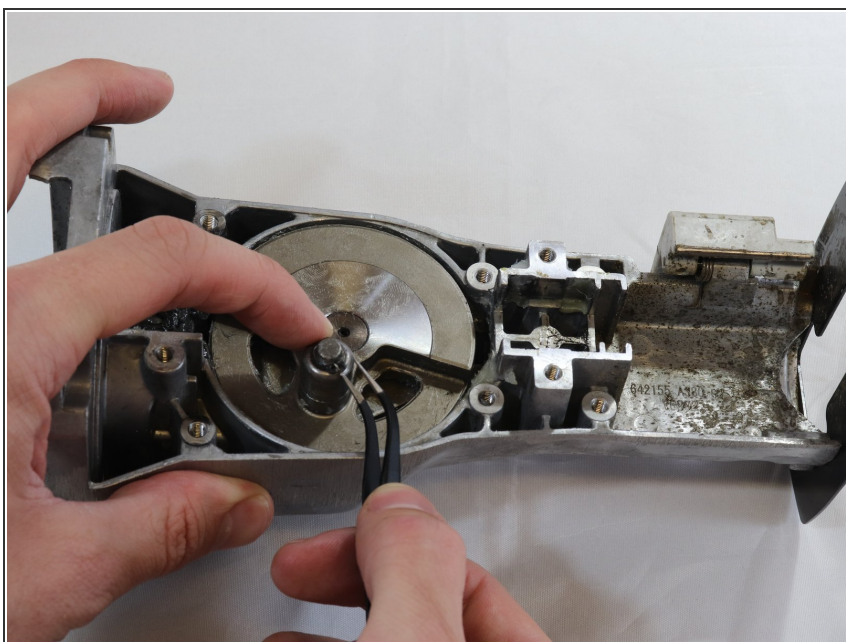
- After all screws removed, the assembly bar can be removed and replaced with ease.

Step 8 — Assembly Bar Bearing



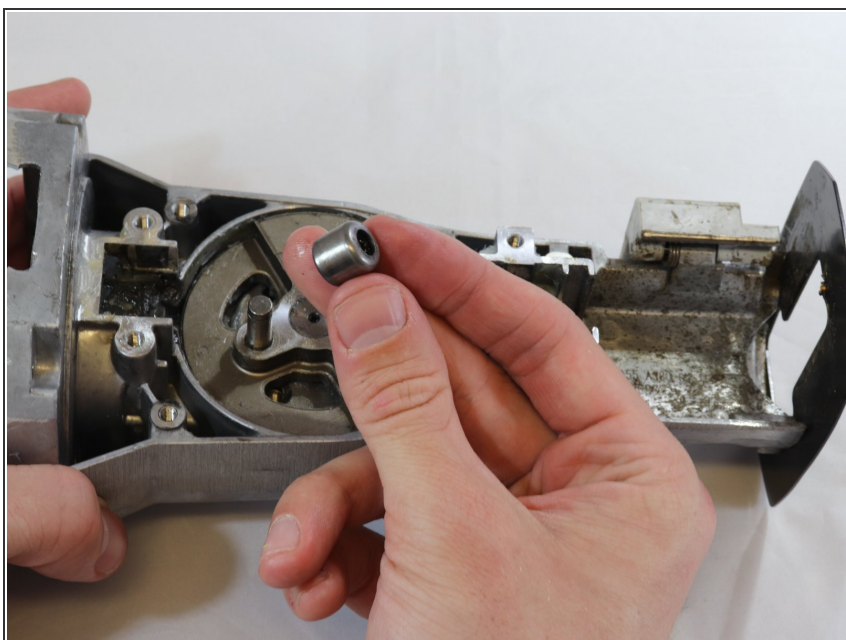
- Begin with the top of the device facing up.

Step 9



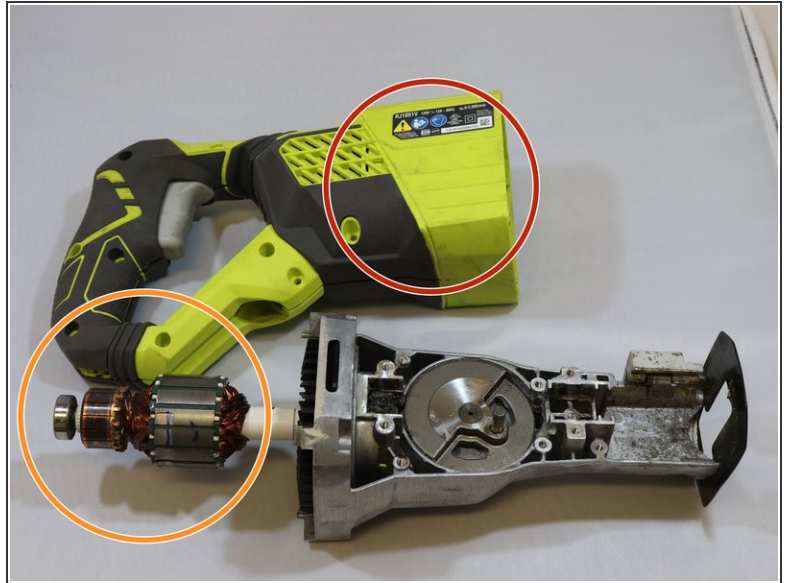
- Insert needle nose pliers to remove the retaining pin at the top of the bearing.

Step 10



- Once the retaining pin has been removed, pull off the damaged bearing and insert a new one.

Step 11 — Motor Housing



- After following prerequisite guides to get to the presented step, remove motor assembly from back housing.



Motor Assembly will be greasy

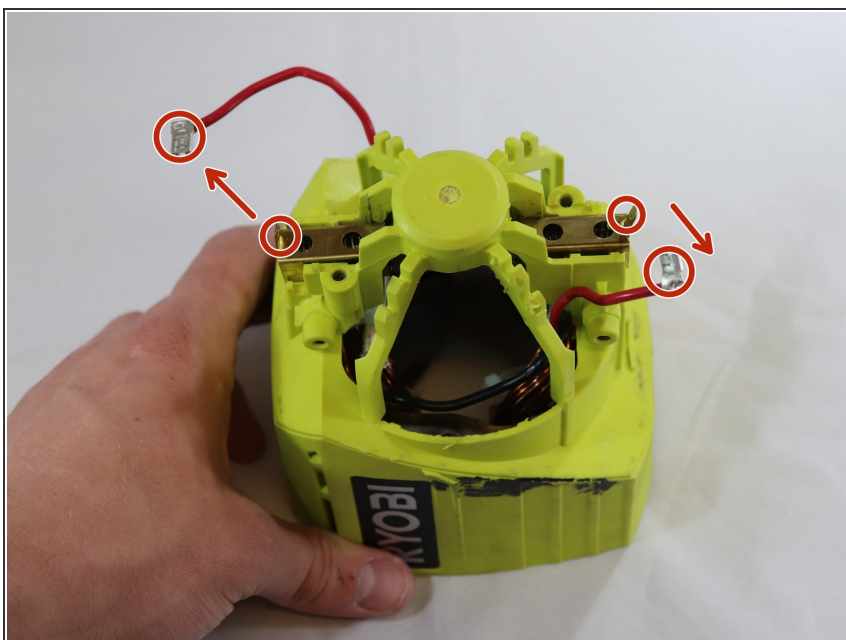
- Motor Assembly
- Motor Assembly Housing

Step 12



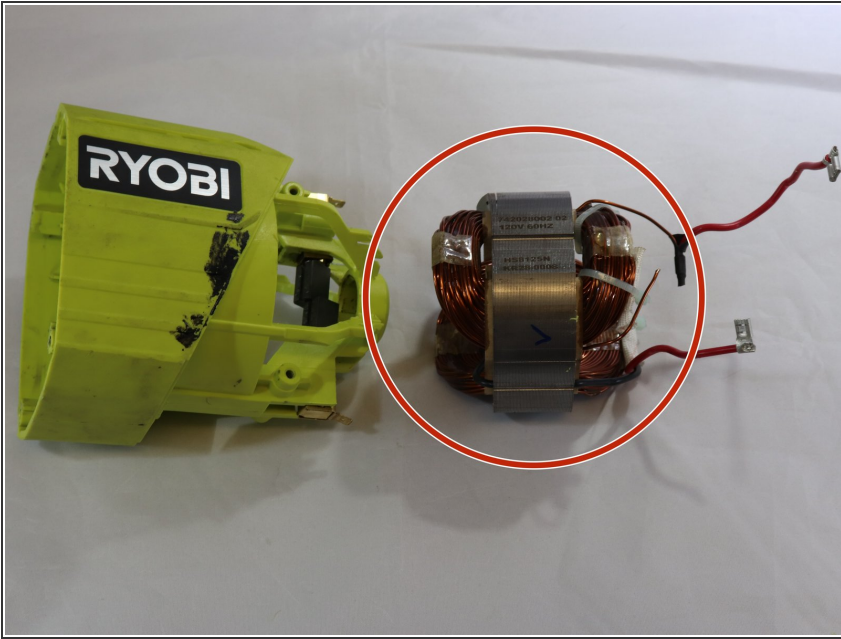
- Using pliers to grab onto the elongated aluminium exterior of the housing, begin to slowly wiggle the motor assembly housing until it comes loose.

Step 13



- Detach red wires from base of the back of the housing .

Step 14



- After the wires have been detached it should be relatively easy to remove and replace the Motor Assembly Housing
- Motor Assembly Housing

To reassemble your device, follow these instructions in reverse order.