



Ryobi RJ1861V Motor Replacement

How to replace a Ryobi RJ1861V. motor

Written By: Adrian Williams



INTRODUCTION

This replacement guide will show how to replace the motor in the Ryobi RJ1861V.



TOOLS:

- [Mako Driver Kit - 64 Precision Bits](#) (1)
-

Step 1 — Saw Bar Assembly



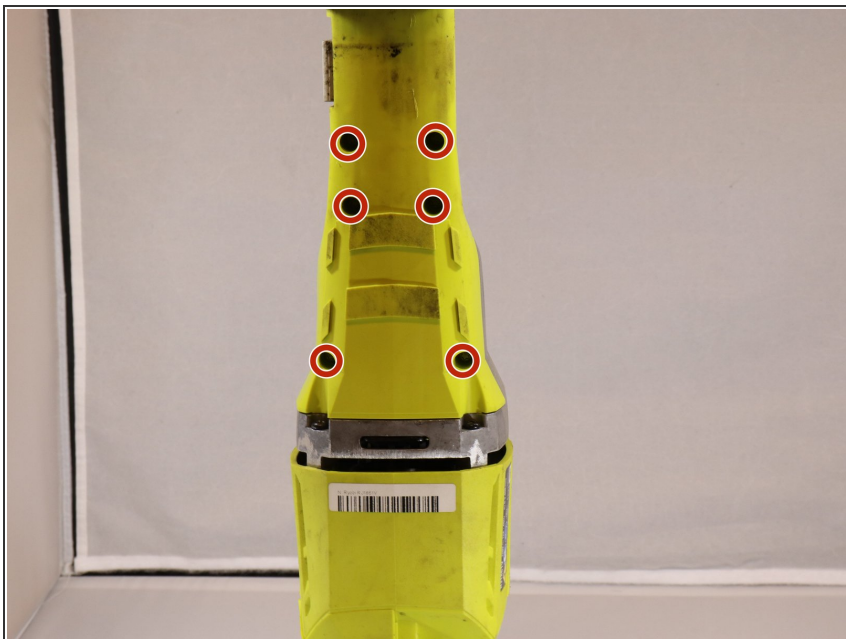
- Unscrew the screw holding the shoe in on the back side:
- One 8 mm Torx T5 screw

Step 2



- Begin to remove rubber sleeve. You may have to use some force as it has a tight fit.
- Indicated in the photo below is the rubber sleeve removed.

Step 3



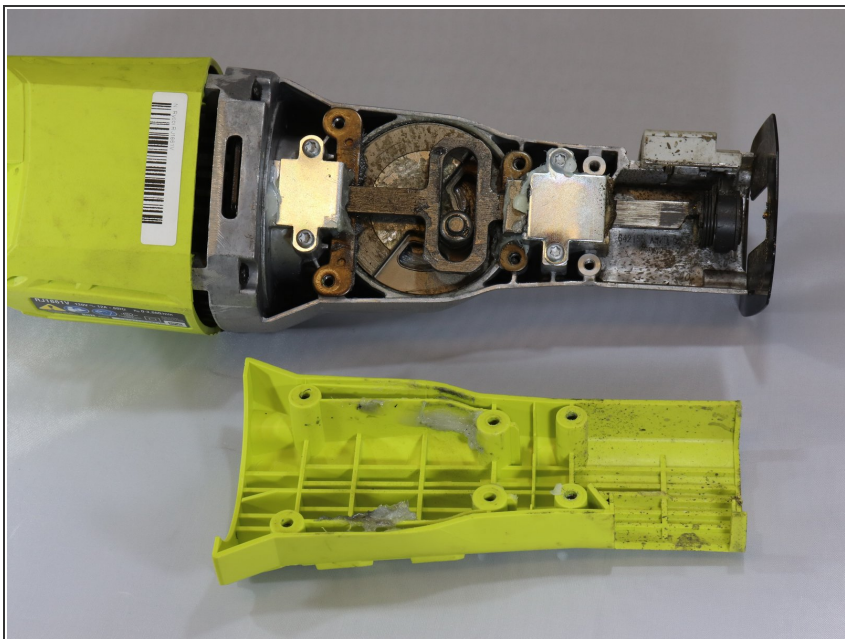
- After sleeve is removed begin to remove the six screws on the back of the device.
- Six Torx T5 Screws

Step 4



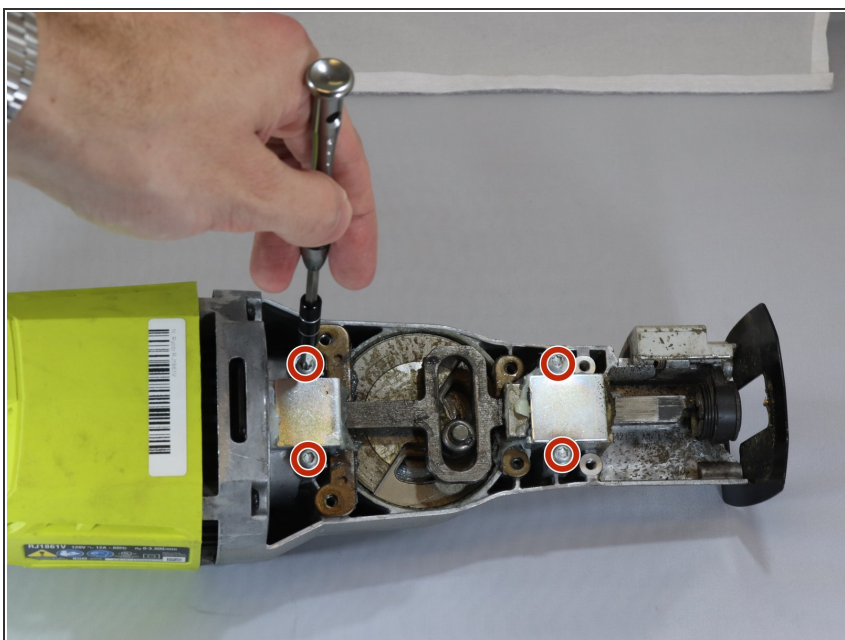
- Using a screw driver begin to unscrew the 4 screws on the top. There will be two screws on each side of the device.
- Four Torx T5 Screws

Step 5



- Remove the backside panel to expose the internal components.

Step 6



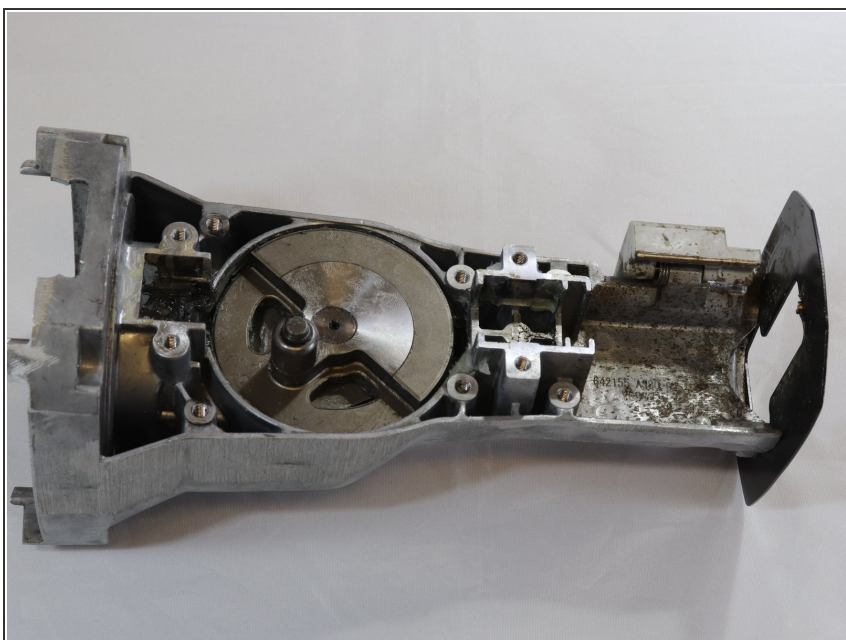
- Unscrew the four T5 Torx screws that are holding the assembly bar in place.

Step 7



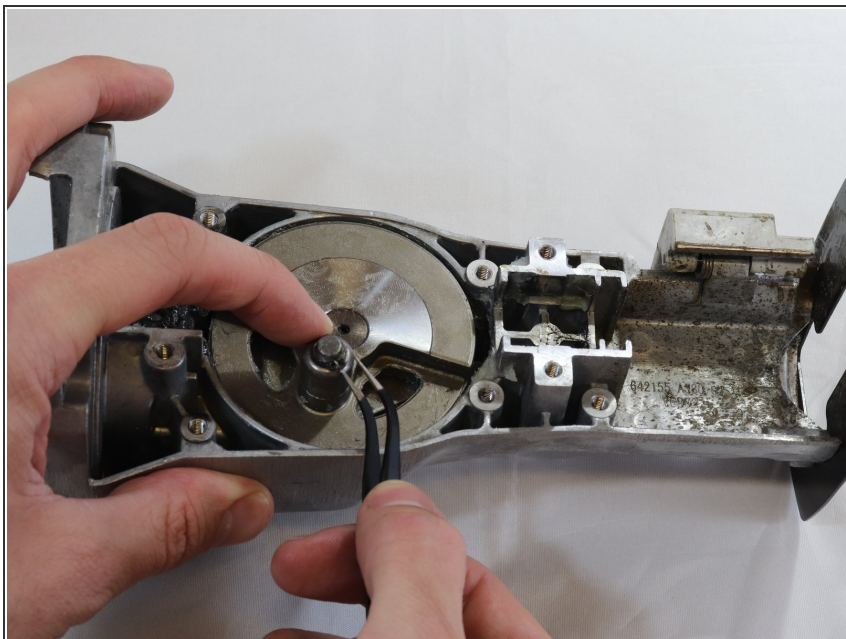
- After all screws removed, the assembly bar can be removed and replaced with ease.

Step 8 — Assembly Bar Bearing



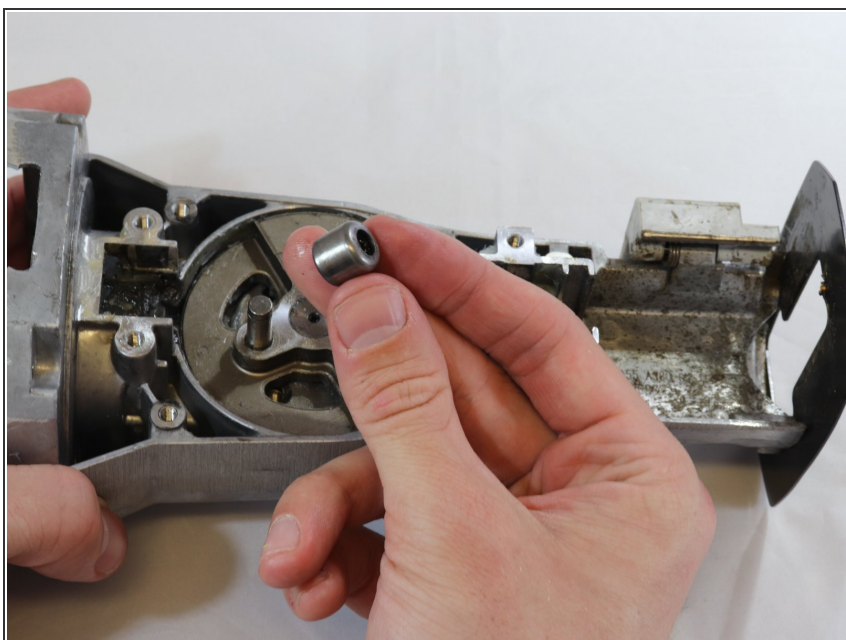
- Begin with the top of the device facing up.

Step 9



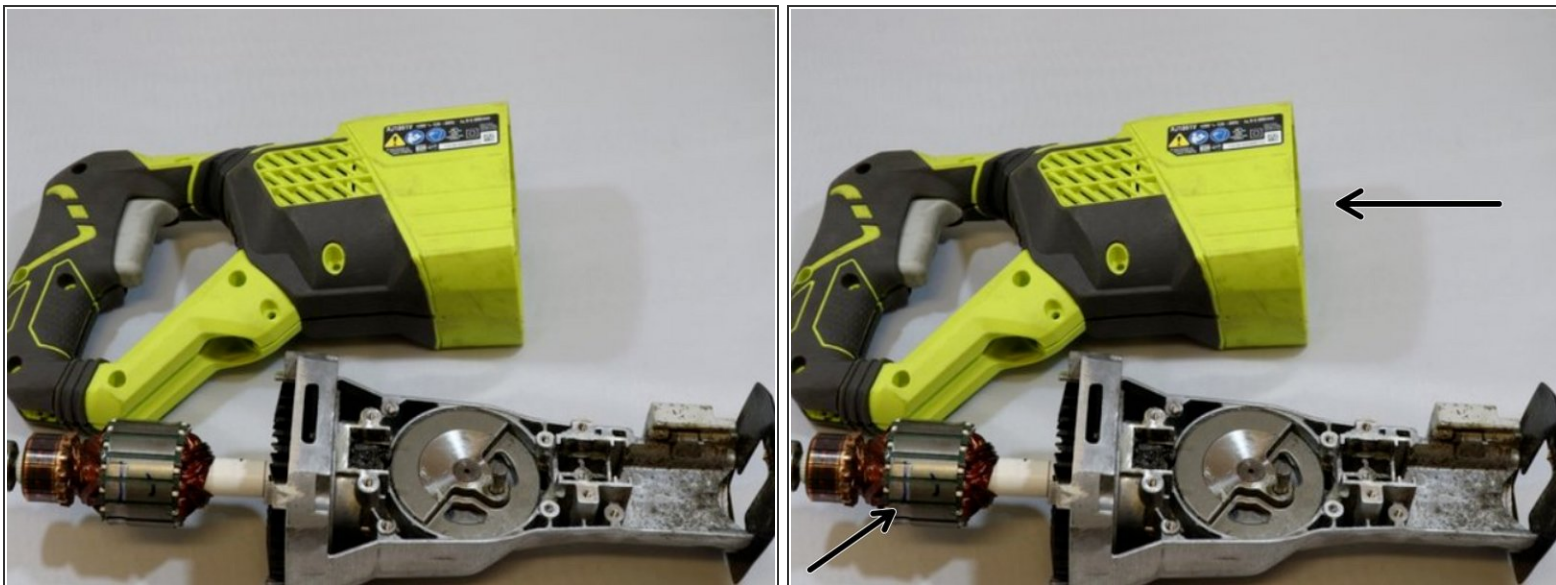
- Insert needle nose pliers to remove the retaining pin at the top of the bearing.

Step 10



- Once the retaining pin has been removed, pull off the damaged bearing and insert a new one.

Step 11 — Motor



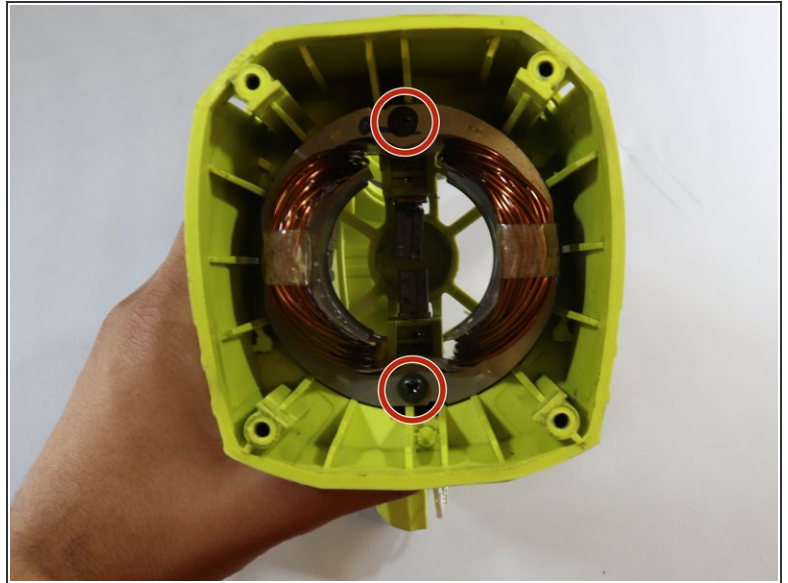
- The motor is divided into two section which are the back and front.
- The arrows indicate where the two motor locations .

Step 12



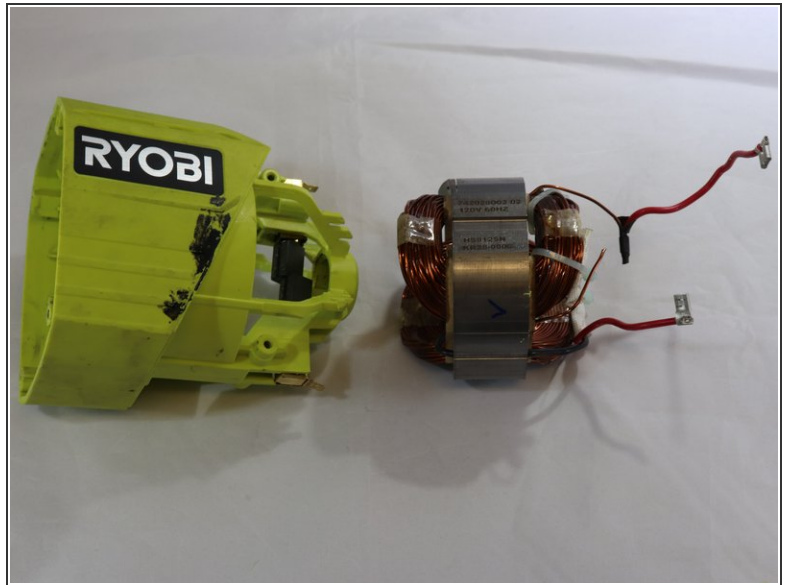
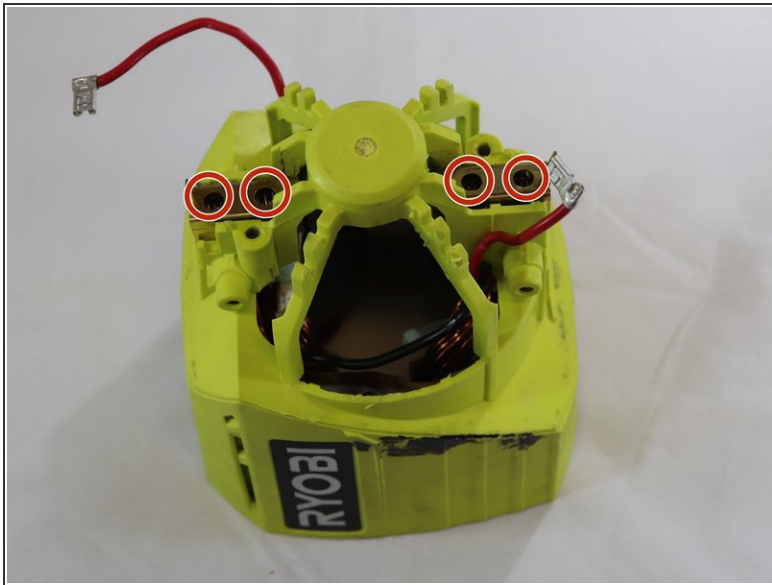
- Remove 4 screws that are located on the top of the Motor
- Four Torx T5 Screws

Step 13



- Remove two screws that are located inside of the motor case.
- 2 T5.0 Hex screws

Step 14



- Remove the four screws located on back of the motor
- Four Torx T5 Screws
- Then just pull the motor out of the case

To reassemble your device, follow these instructions in reverse order.