



Ryobi RJ1861V Saw Bar Assembly Replacement

In this replacement guide we show how to deconstruct the Ryobi RJ1861V to reach the Motor Assembly for replacement.

Written By: Ryan Quinlivan



INTRODUCTION

Use this guide to replace the assembly bar.



TOOLS:

- [T5 Torx Screwdriver](#) (1)
-

Step 1 — Saw Bar Assembly



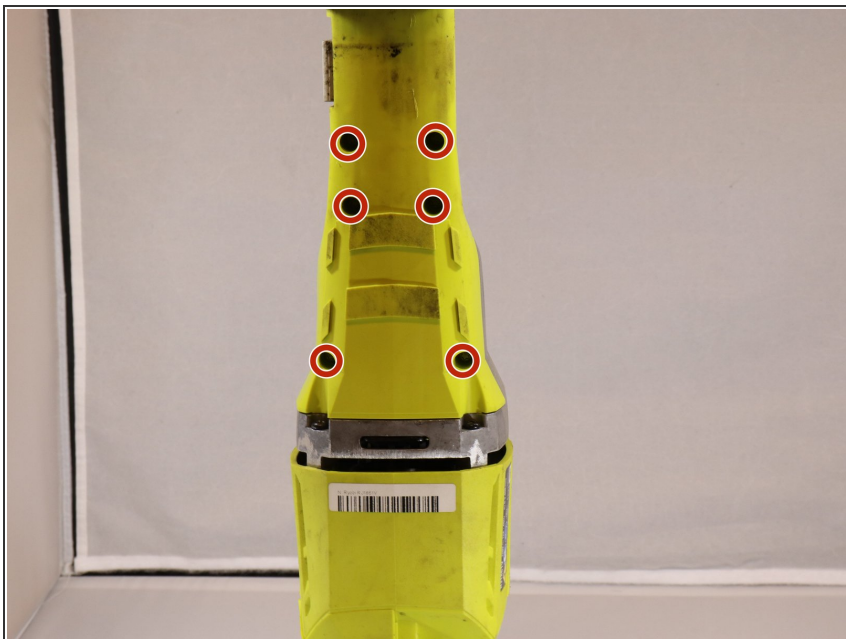
- Unscrew the screw holding the shoe in on the back side:
- One 8 mm Torx T5 screw

Step 2



- Begin to remove rubber sleeve. You may have to use some force as it has a tight fit.
- Indicated in the photo below is the rubber sleeve removed.

Step 3



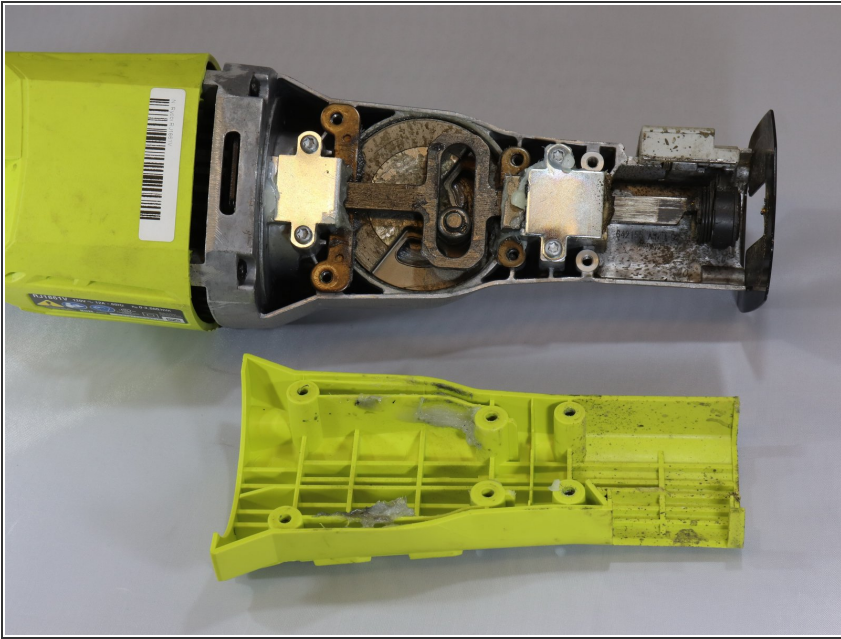
- After sleeve is removed begin to remove the six screws on the back of the device.
- Six Torx T5 Screws

Step 4



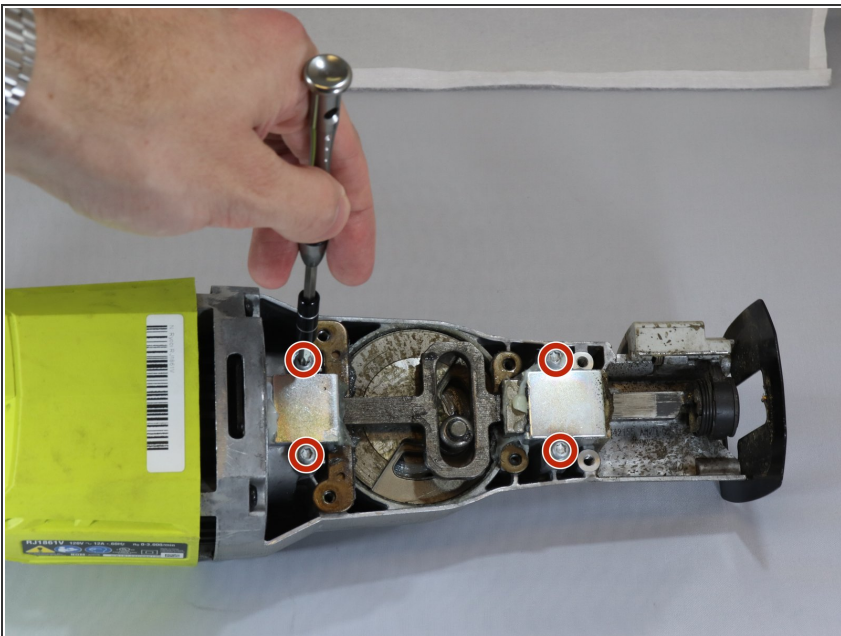
- Using a screw driver begin to unscrew the 4 screws on the top. There will be two screws on each side of the device.
- Four Torx T5 Screws

Step 5



- Remove the backside panel to expose the internal components.

Step 6



- Unscrew the four T5 Torx screws that are holding the assembly bar in place.

Step 7



- After all screws removed, the assembly bar can be removed and replaced with ease.

To reassemble your device, follow these instructions in reverse order.