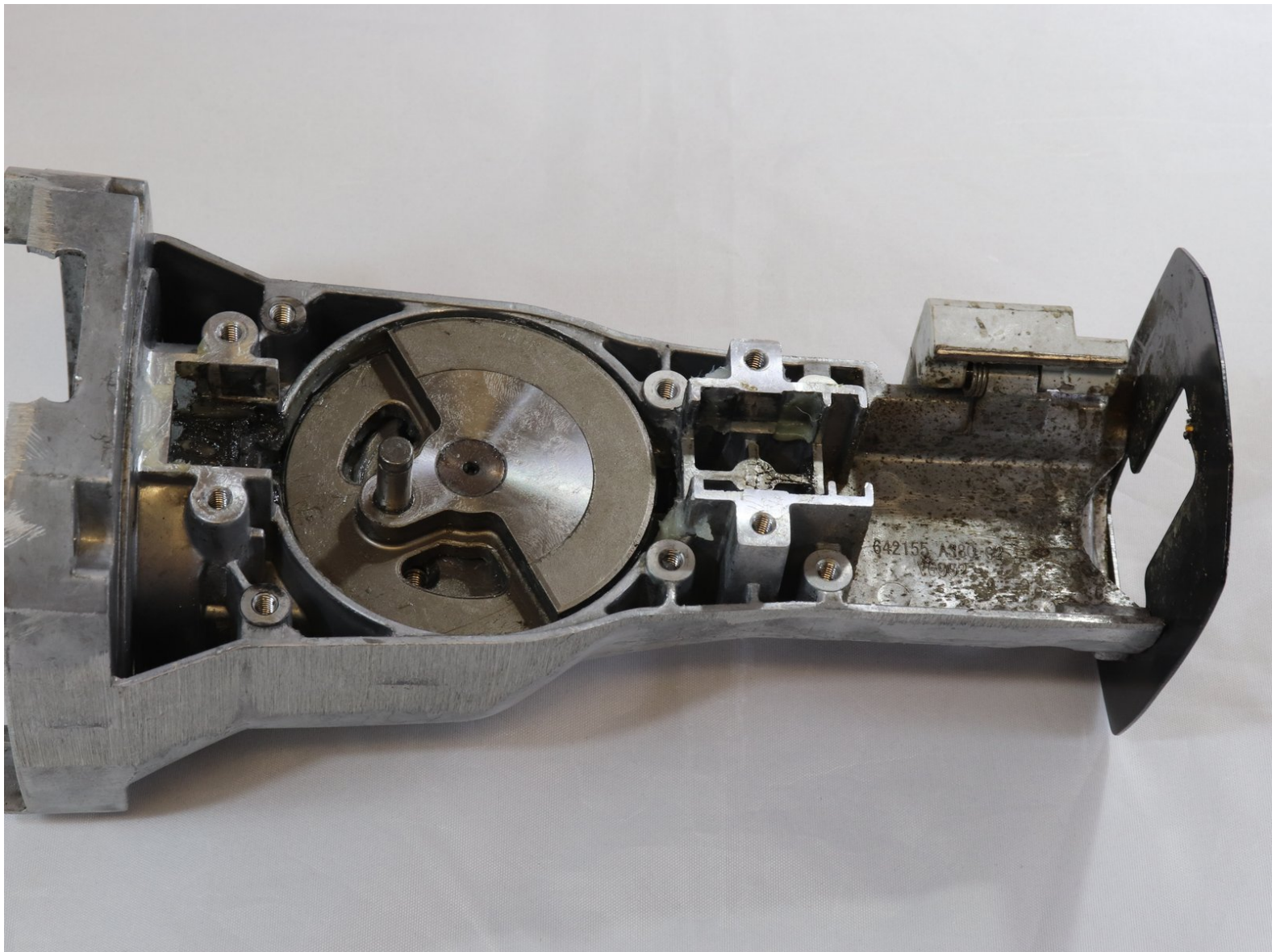




Ryobi RJ1861V Saw Gear Assembly Replacement

This guide will teach users how to replace the gear assembly that attaches the motor to the assembly bar.

Written By: Morgan Doyle





TOOLS:

- [T5 Torx Screwdriver](#) (1)
 - [Tweezers](#) (1)
-

Step 1 — Saw Bar Assembly



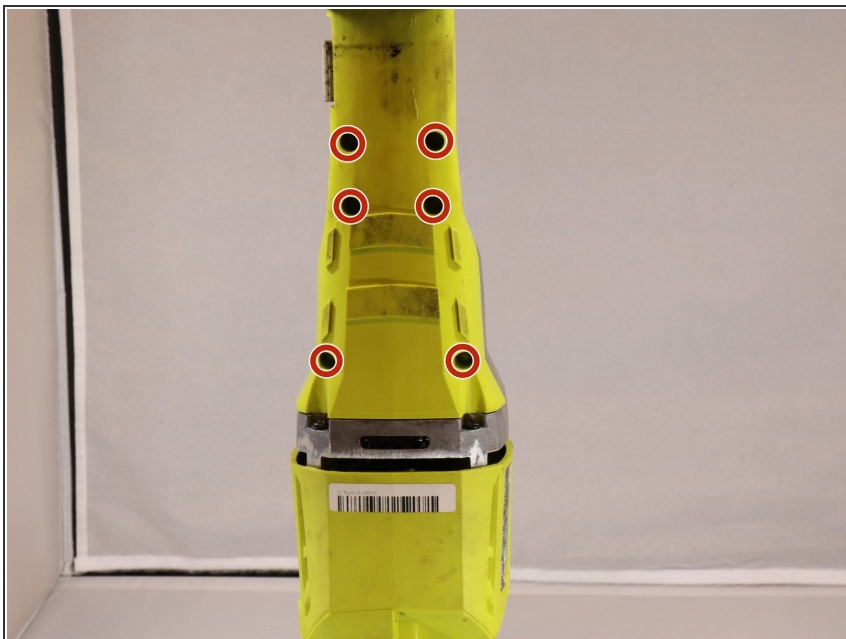
- Unscrew the screw holding the shoe in on the back side:
- One 8 mm Torx T5 screw

Step 2



- Begin to remove rubber sleeve. You may have to use some force as it has a tight fit.
- Indicated in the photo below is the rubber sleeve removed.

Step 3



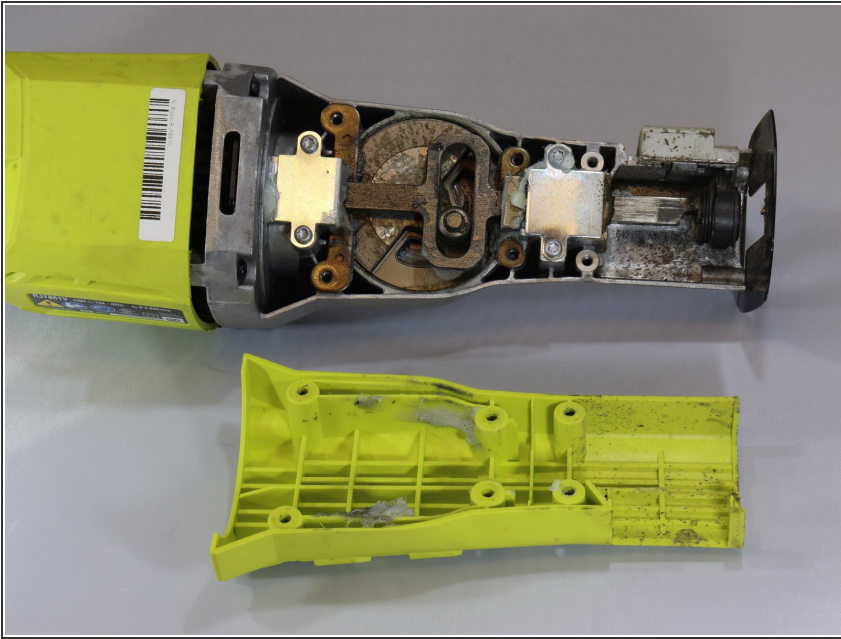
- After sleeve is removed begin to remove the six screws on the back of the device.
- Six Torx T5 Screws

Step 4



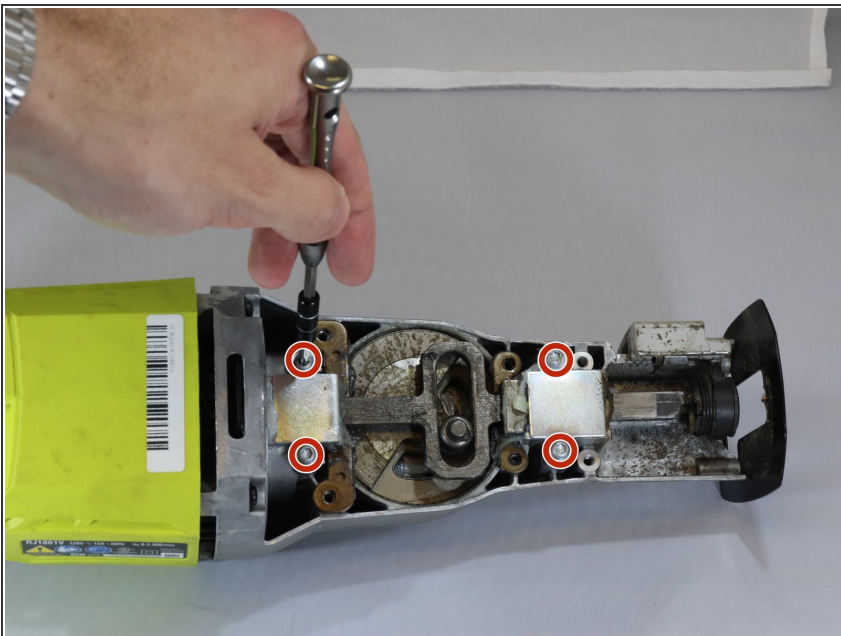
- Using a screw driver begin to unscrew the 4 screws on the top. There will be two screws on each side of the device.
- Four Torx T5 Screws

Step 5



- Remove the backside panel to expose the internal components.

Step 6



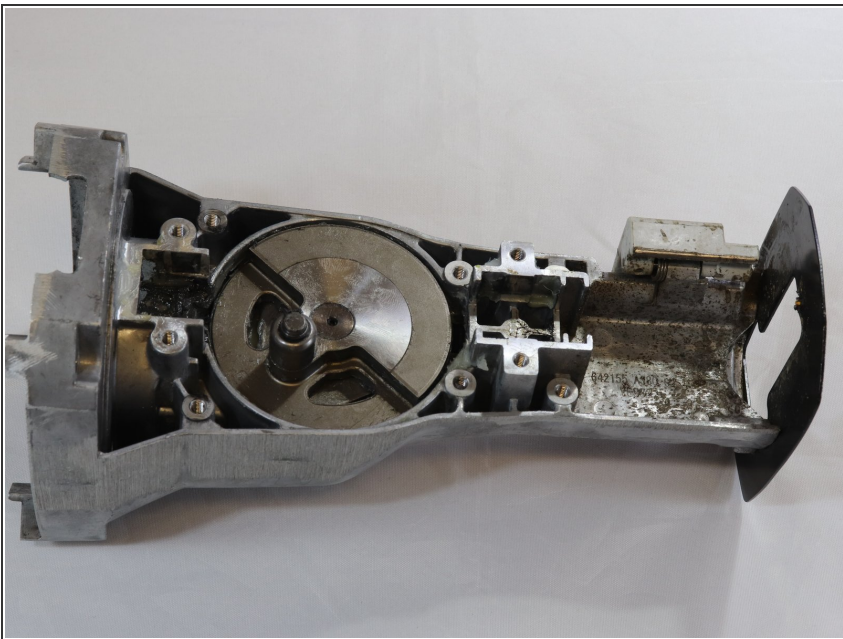
- Unscrew the four T5 Torx screws that are holding the assembly bar in place.

Step 7



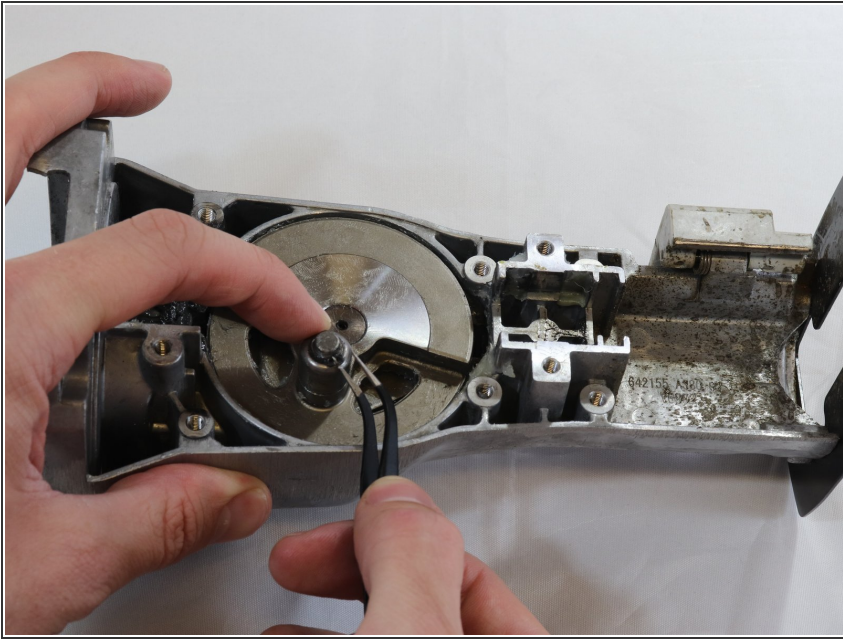
- After all screws removed, the assembly bar can be removed and replaced with ease.

Step 8 — Assembly Bar Bearing



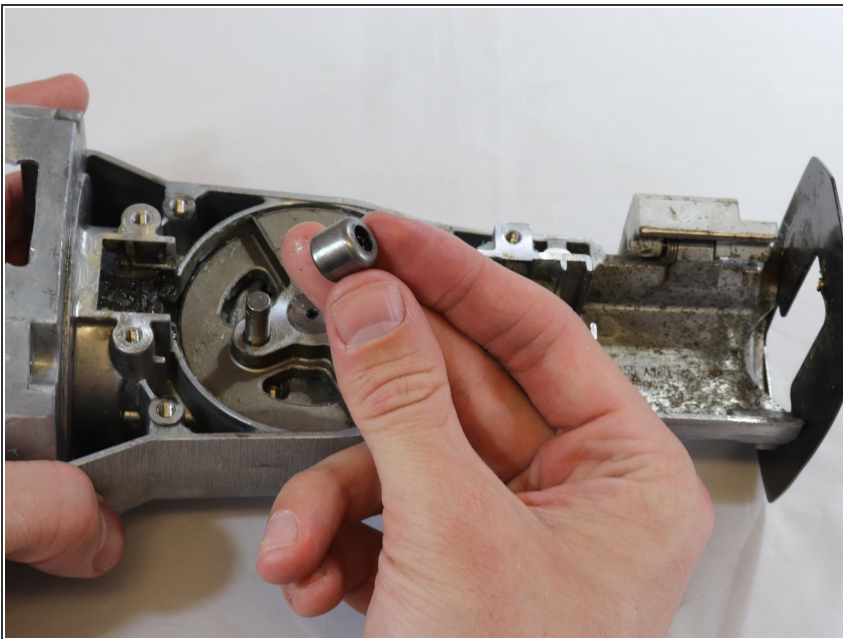
- Begin with the top of the device facing up.

Step 9



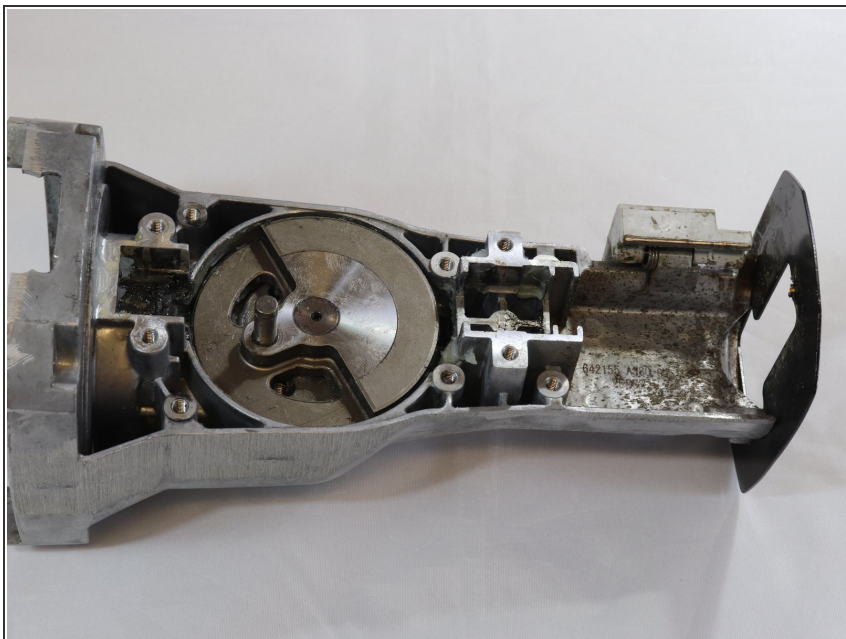
- Insert needle nose pliers to remove the retaining pin at the top of the bearing.

Step 10



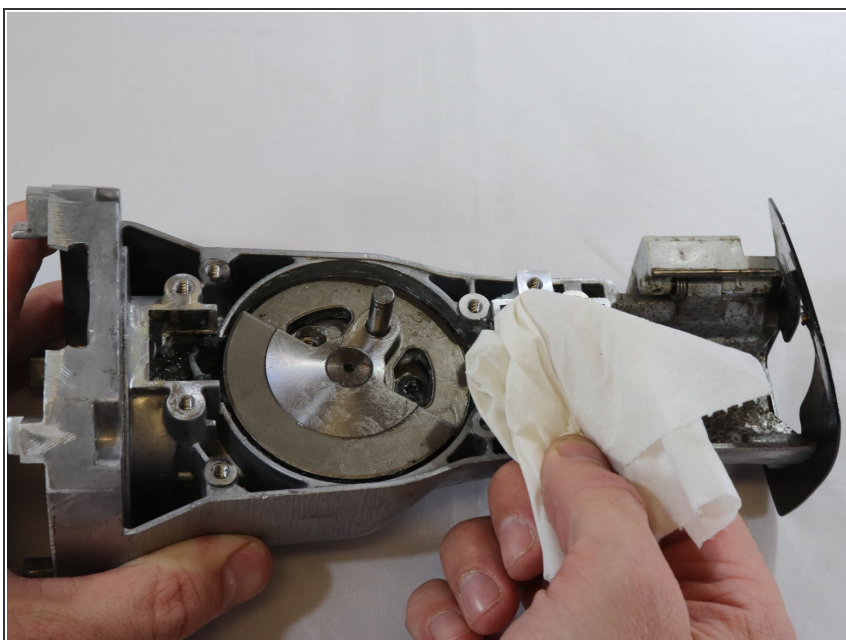
- Once the retaining pin has been removed, pull off the damaged bearing and insert a new one.

Step 11 — Saw Gear Assembly



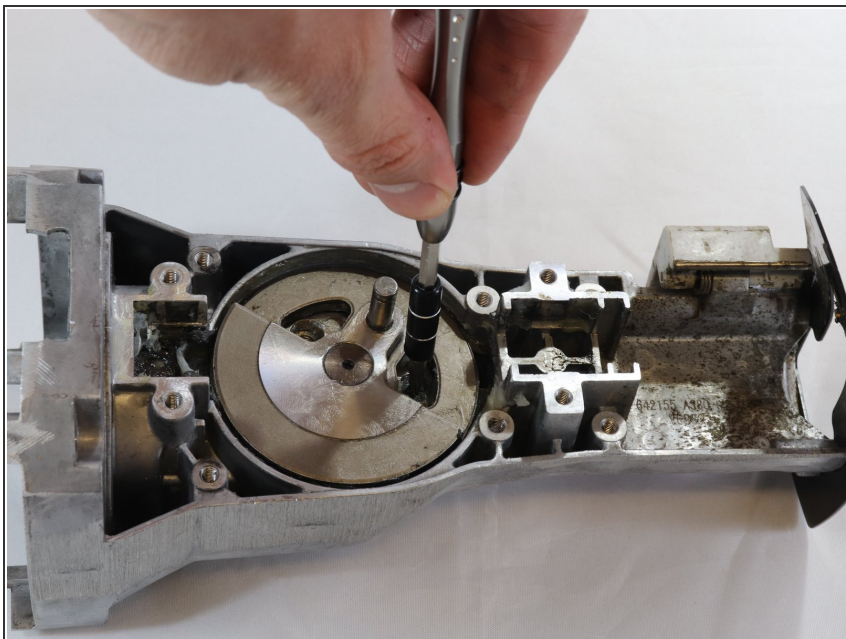
- After you remove the bearing, stand the device with the gear assembly facing up.

Step 12



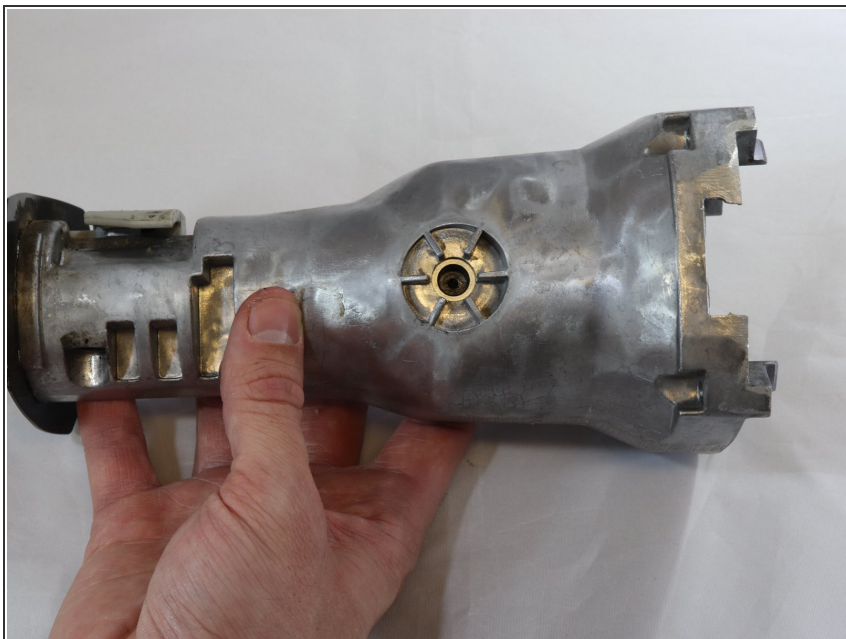
- The gear assembly will be covered in industrial lubricant, so wipe away an excess with a rag to reveal three screws.

Step 13



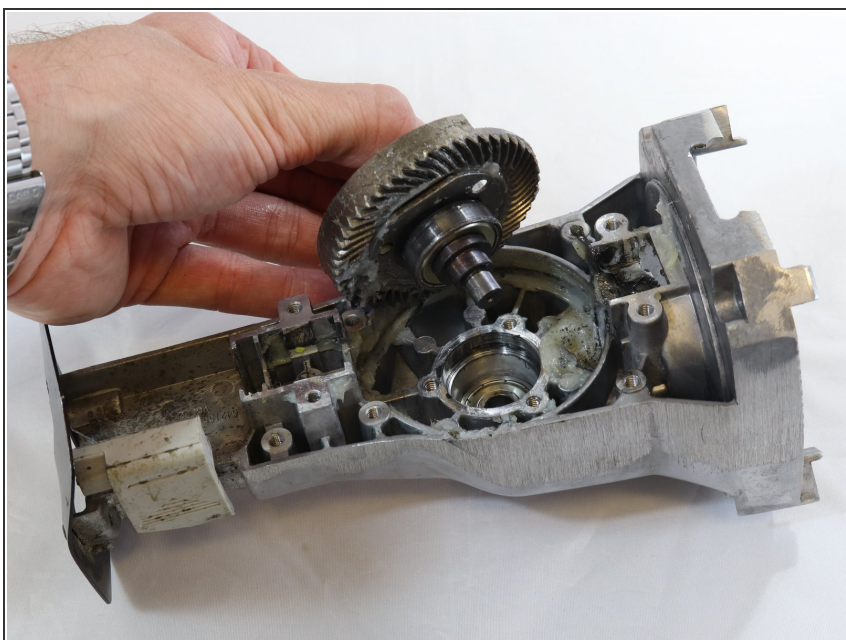
- Remove three screws with a Torx bit and screw driver.

Step 14



- Rotate the device 180 degrees and apply pressure to the gear assembly through the small hole, extra force may be needed in this step to break it loose.

Step 15



- Once the gear assembly has broken free rotate the device again and lift it out of the gear housing.

To reassemble your device, follow these instructions in reverse order.