



Ryobi RS290G Brush Assembly Replacement

How to replace a Ryobi RS290G brush assembly.

Written By: Daniel



INTRODUCTION

If your Ryobi RS290G Brush Assemblies are no longer working, this guide will show you how to successfully replace them.



TOOLS:

- [Phillips #2 Screwdriver](#) (1)



PARTS:

- [Part Number: 039143005002](#) (1)

Step 1 — Top Cap



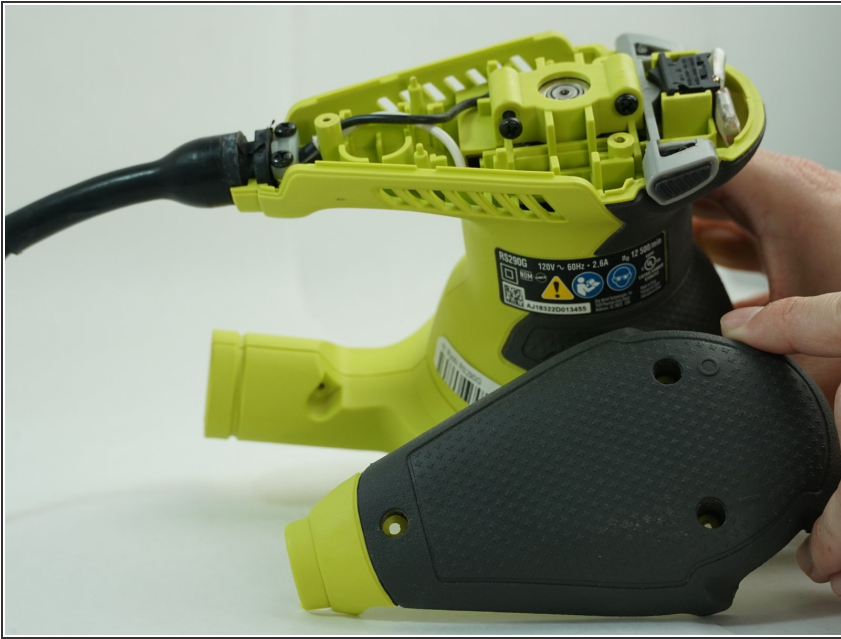
- Remove two 20mm and one 16mm Phillips #2 screws from the housing assembly and exhaust port.

Step 2



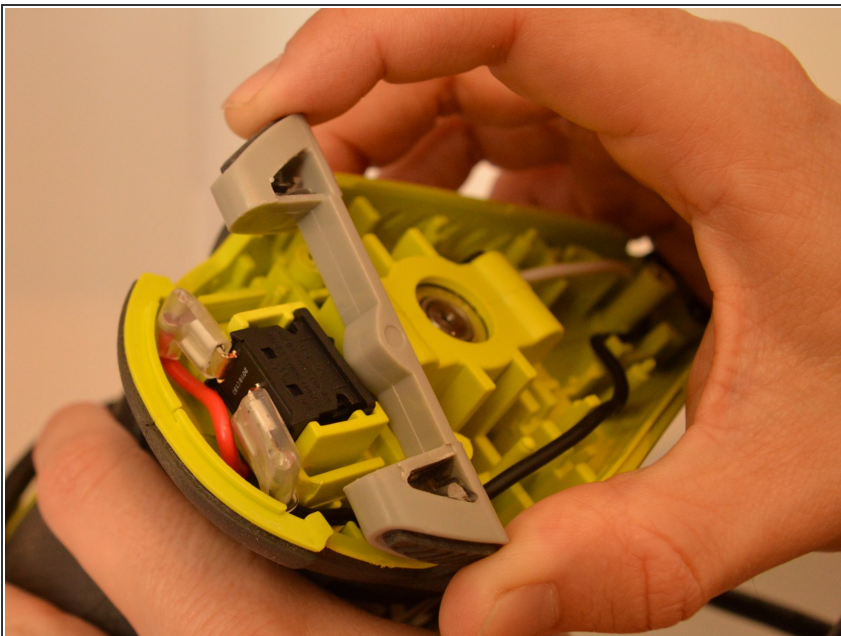
- Remove the three 16mm Phillips #2 screws from the top cap/upper grip.

Step 3



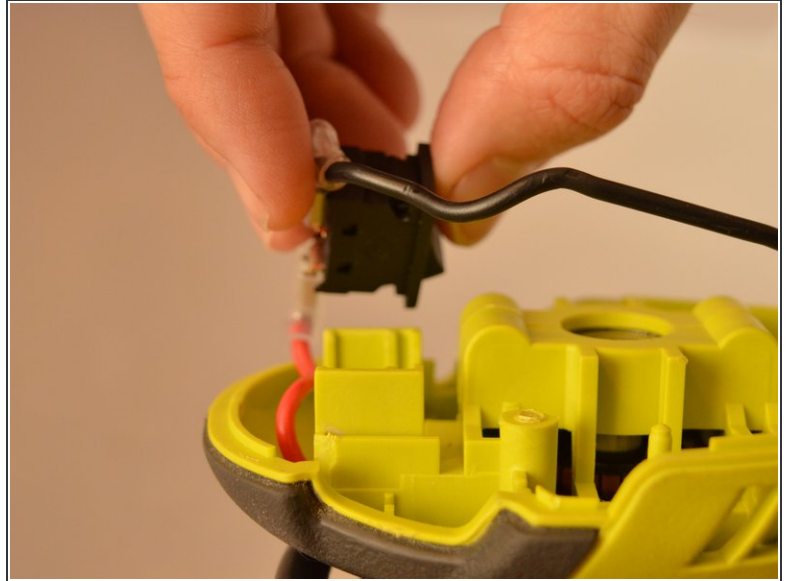
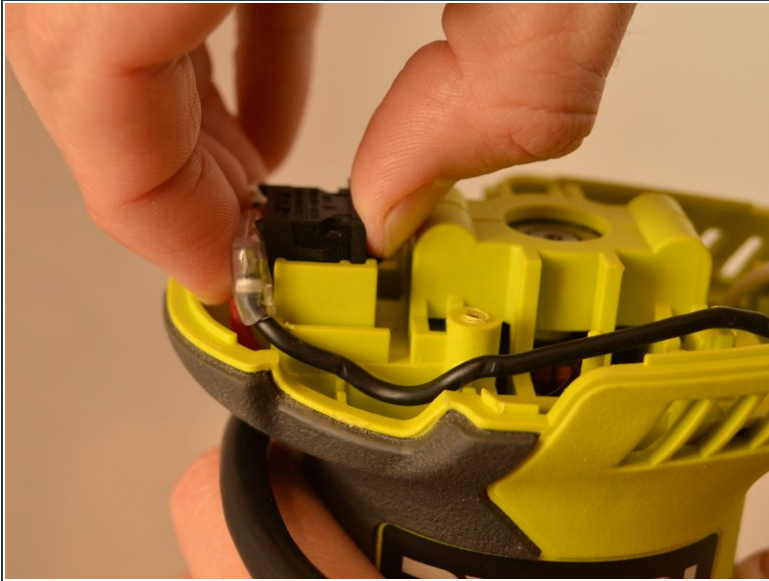
- Remove the top cap.

Step 4 — Switch Trigger



- Remove the switch trigger.

Step 5 — Brush Assembly



- Slide the power switch out of the housing assembly by carefully gripping the power switch and slide upward from the base.

Step 6



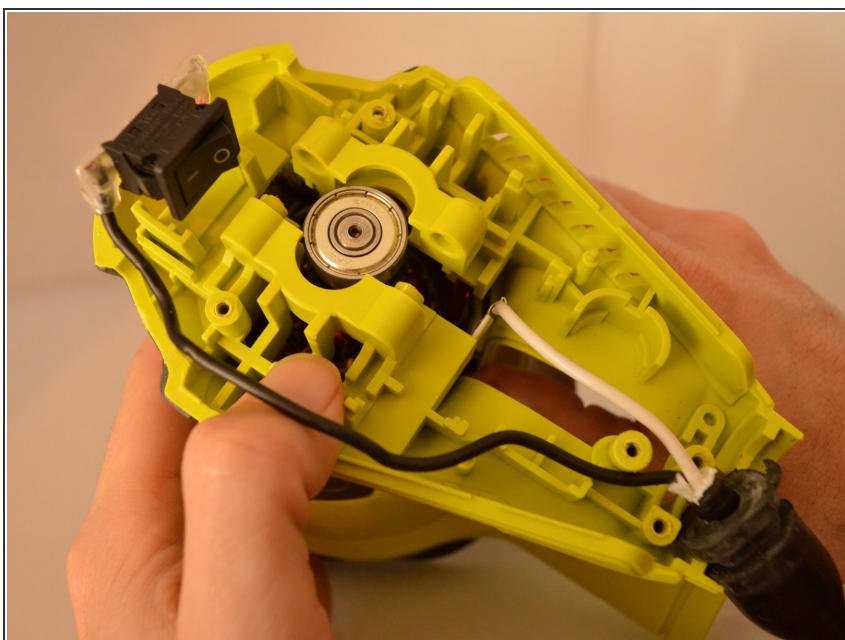
- Remove the two 16mm Phillips #2 screws from the inner housing assembly.

Step 7



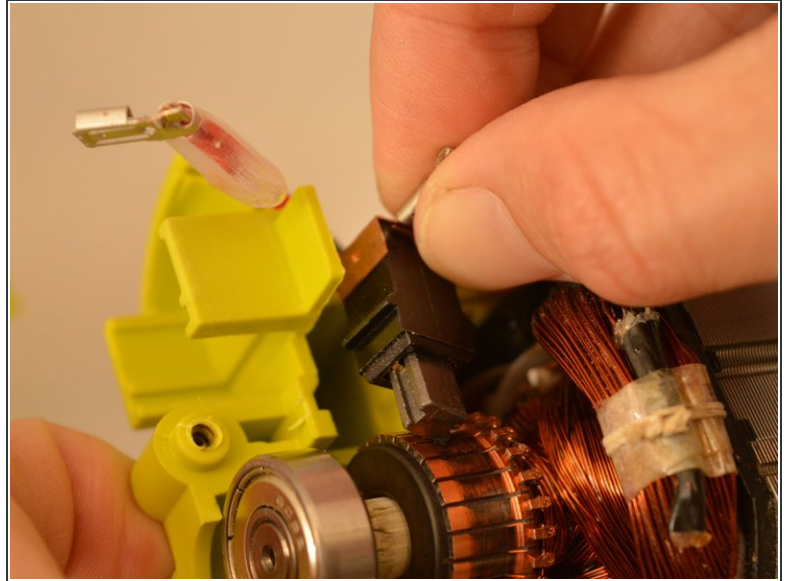
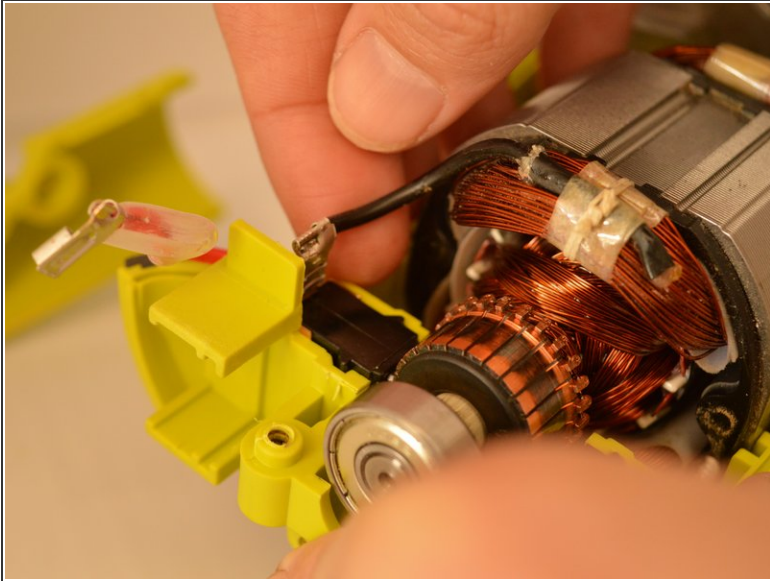
- Remove the two 14mm Phillips #2 screws from the cord clamp.

Step 8



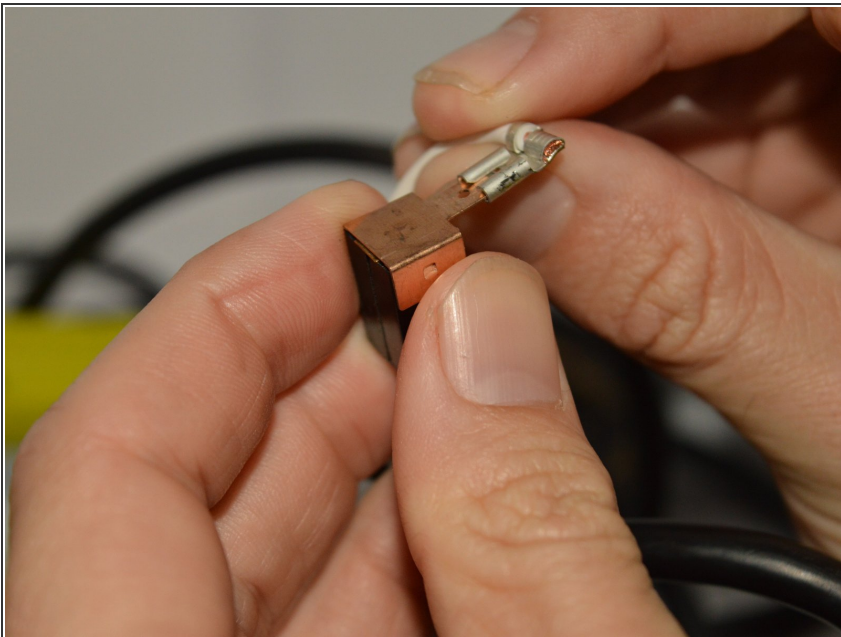
- Carefully slide the housing assembly apart, avoiding damage or pulling on wires.

Step 9



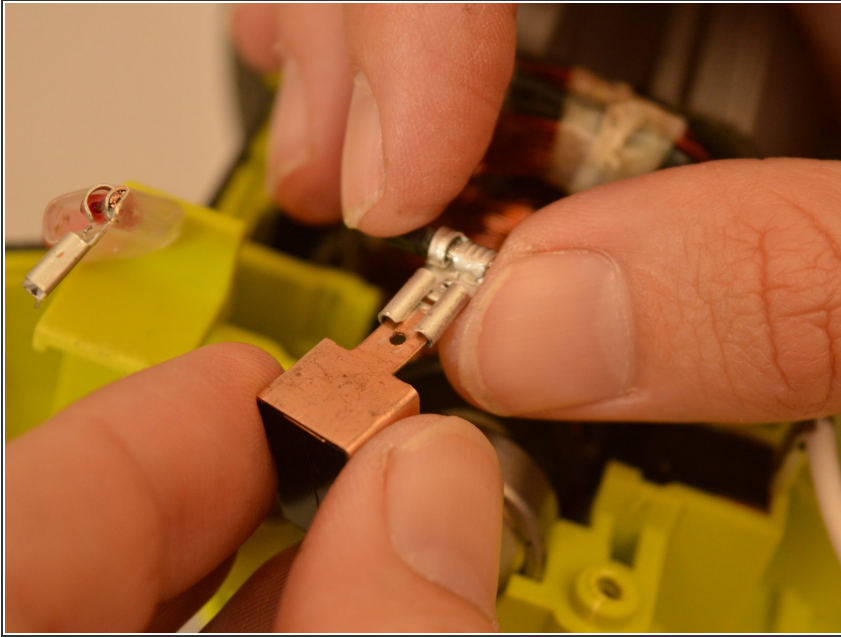
- Slide out both brush assemblies from the inner housing assembly.

Step 10



- Slide off the disconnect terminal for the brush assembly (white lead).

Step 11



- Slide off the disconnect terminal for the brush assembly (black lead).

To reassemble your device, follow these instructions in reverse order.