



Ryobi RS290G Motor Replacement

How to replace a Ryobi RS290G motor.

Written By: Daniel



INTRODUCTION

If your Ryobi RS290G motor is broken or faulty this guide will show you how to successfully replace the motor. If you ordered the correct part, it should have the disconnect terminals already installed/crimped on.



TOOLS:

- [Phillips #2 Screwdriver](#) (1)
- [Spudger](#) (1)



PARTS:

- [Part Number: 039143005042](#) (1)

Step 1 — Top Cap



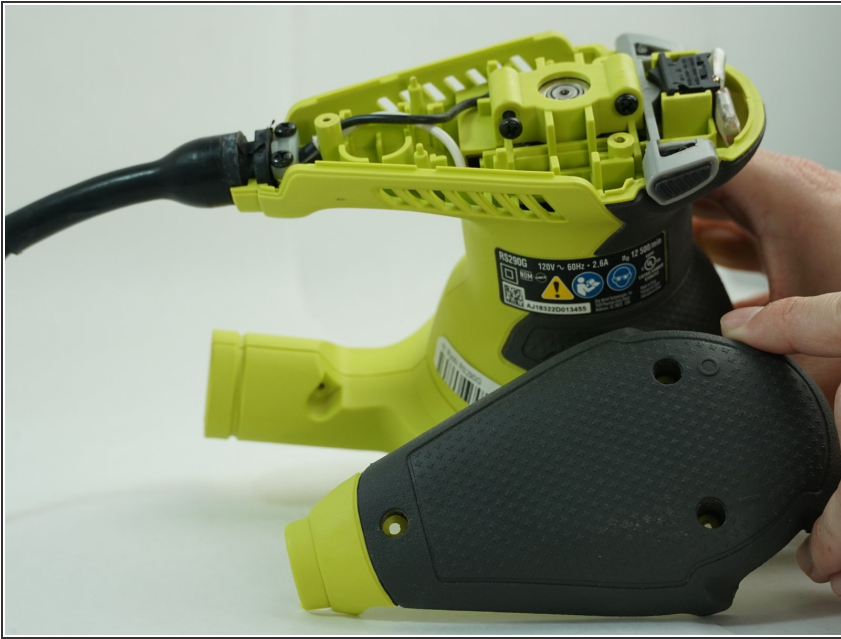
- Remove two 20mm and one 16mm Phillips #2 screws from the housing assembly and exhaust port.

Step 2



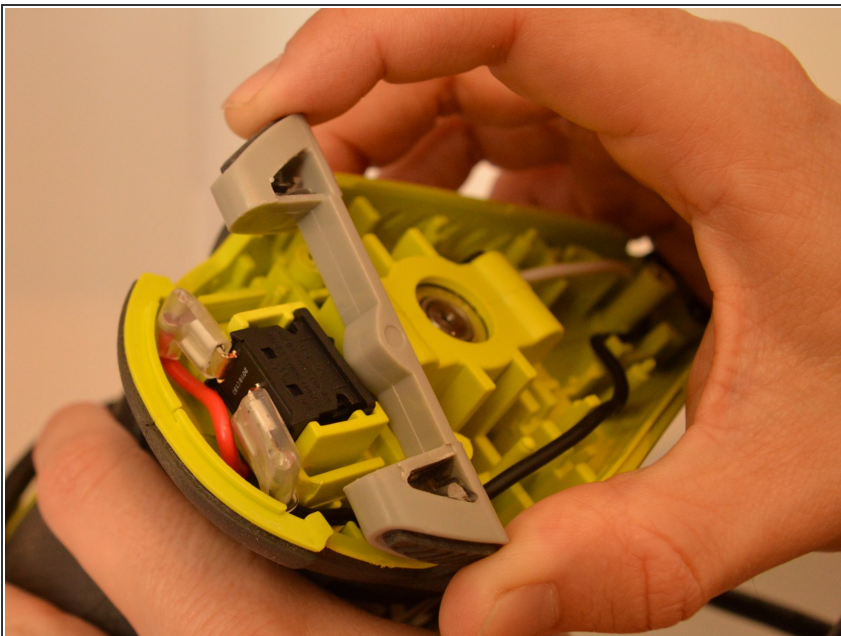
- Remove the three 16mm Phillips #2 screws from the top cap/upper grip.

Step 3



- Remove the top cap.

Step 4 — Switch Trigger



- Remove the switch trigger.

Step 5 — Motor



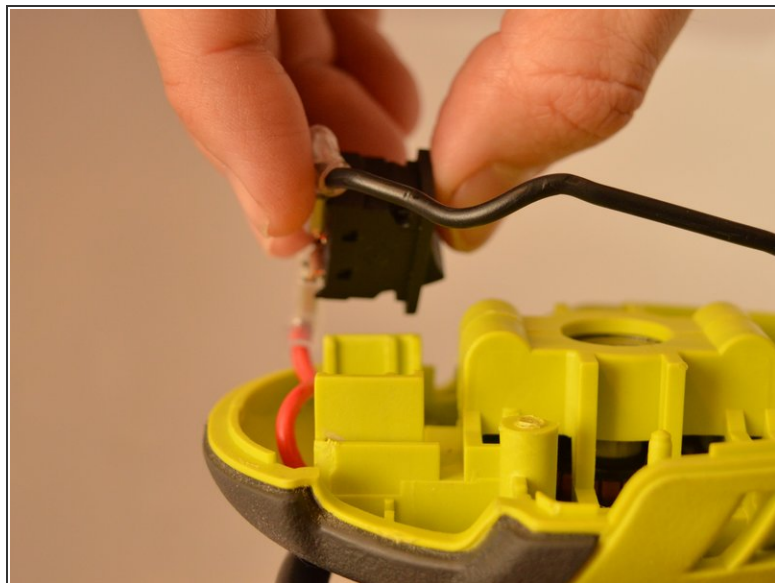
- Remove the two 16mm Phillips #2 screws from the inner housing assembly.

Step 6



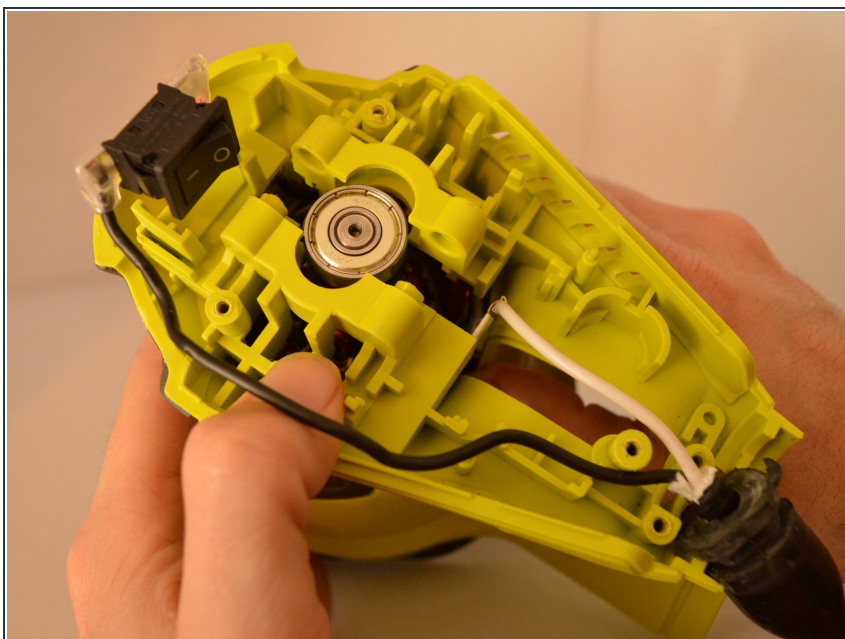
- Remove the two 14mm Phillips #2 screws from the cord clamp.

Step 7



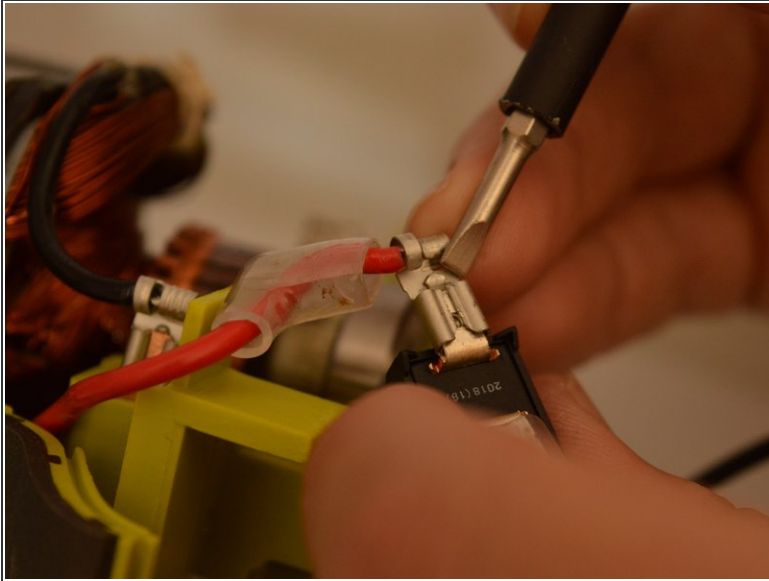
- Slide the power switch out of the housing assembly.

Step 8



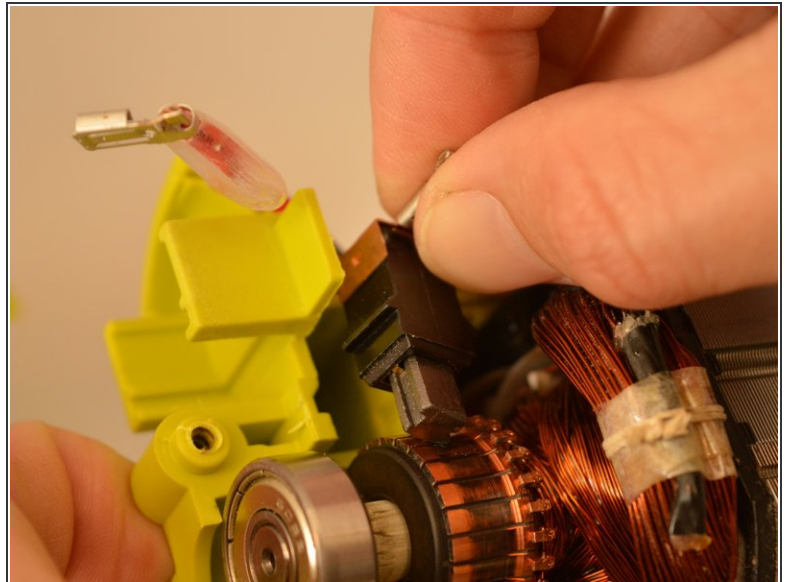
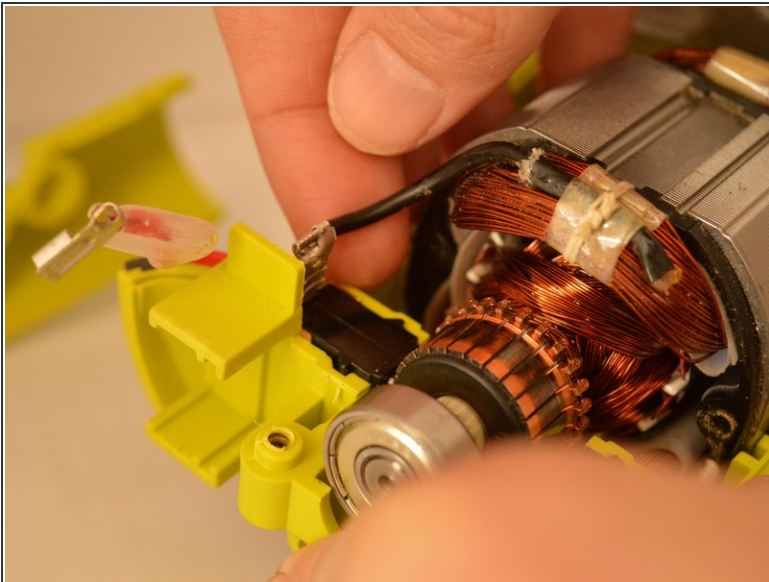
- Carefully slide the housing assembly apart, avoiding damage or pulling on wires.

Step 9



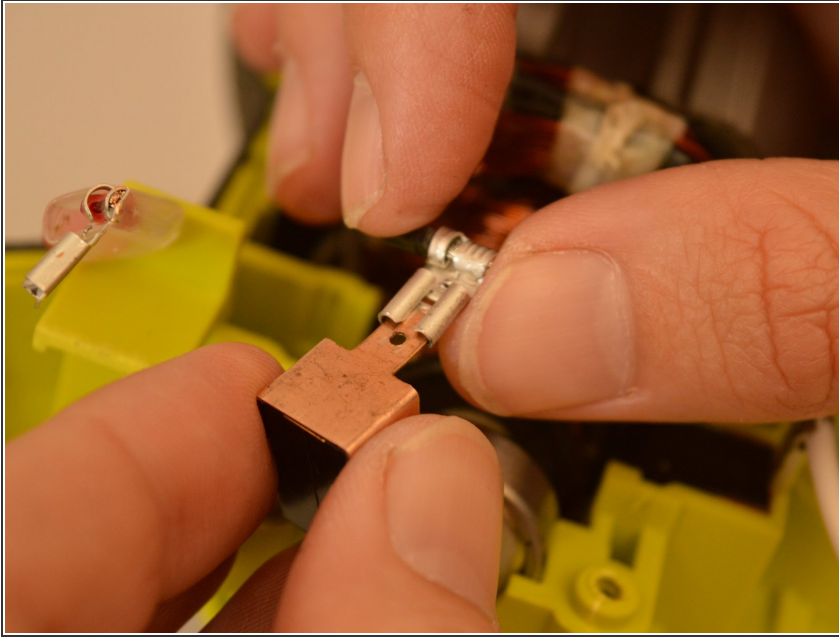
- Slide off the disconnect terminal for the switch (red lead) from the power switch using the flat end of a spudger.

Step 10



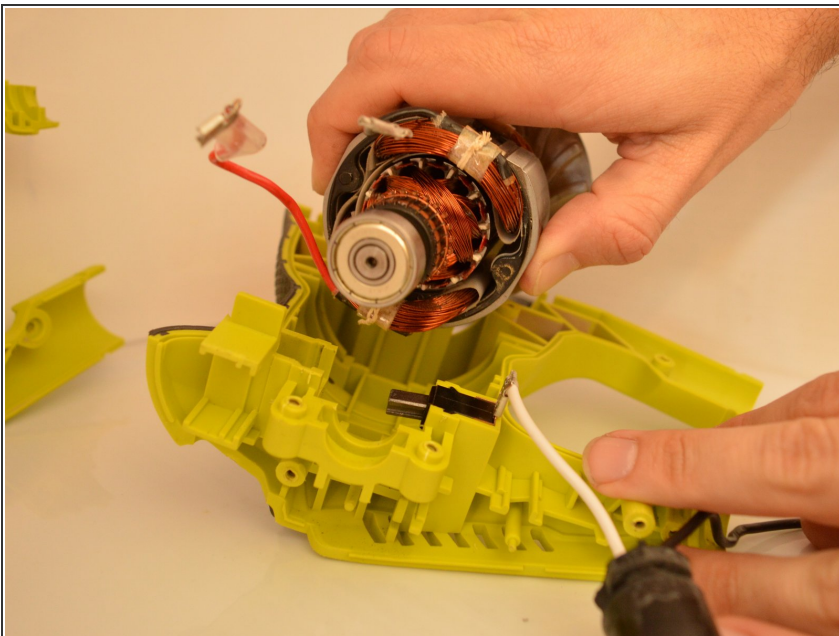
- Slide out the brush assembly with the black lead from the inner housing assembly.

Step 11



- Slide off the disconnect terminal for the brush assembly (black lead) from the brush assembly.
- ⓘ You may need an ESD-safe flat edge tool, such as a spudger, to help slide off the disconnect terminal. Be careful not to damage the pieces or yourself.

Step 12



- Remove the armature assembly, with the motor, out of the inner housing assembly.

Step 13



- Replace the motor (also known as field assembly).

To reassemble your device, follow these instructions in reverse order.