



Ryobi RS290G Power Cord Replacement

How to replace a Ryobi RS290G power cord.

Written By: Daniel



INTRODUCTION

If your Ryobi RS290G power cord is damaged or possibly unsafe due to exposed wires this guide will show you how to successfully replace the power cord.



TOOLS:

- [Phillips #2 Screwdriver](#) (1)



PARTS:

- [Part Number: 039143005087](#) (1)

Step 1 — Top Cap



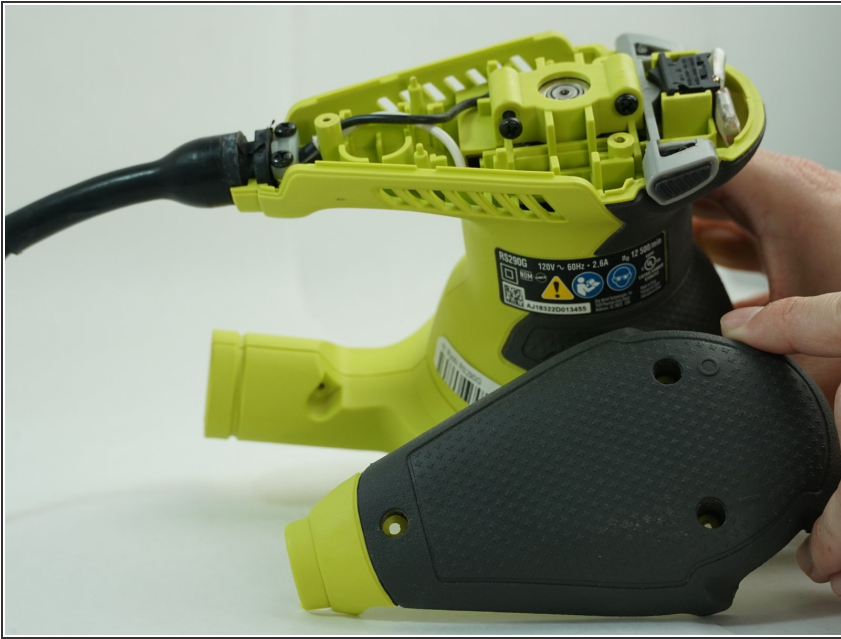
- Remove two 20mm and one 16mm Phillips #2 screws from the housing assembly and exhaust port.

Step 2



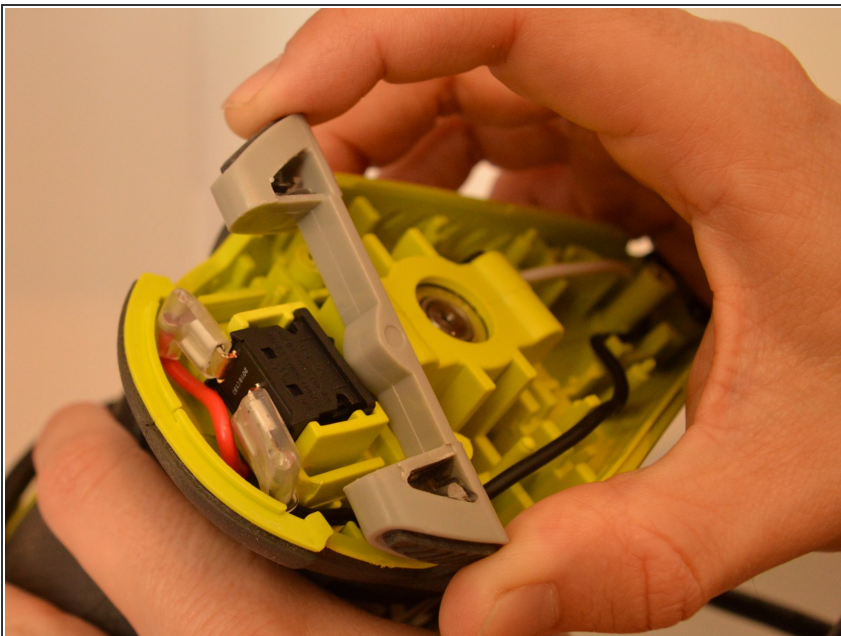
- Remove the three 16mm Phillips #2 screws from the top cap/upper grip.

Step 3



- Remove the top cap.

Step 4 — Switch Trigger



- Remove the switch trigger.

Step 5 — Power Cord



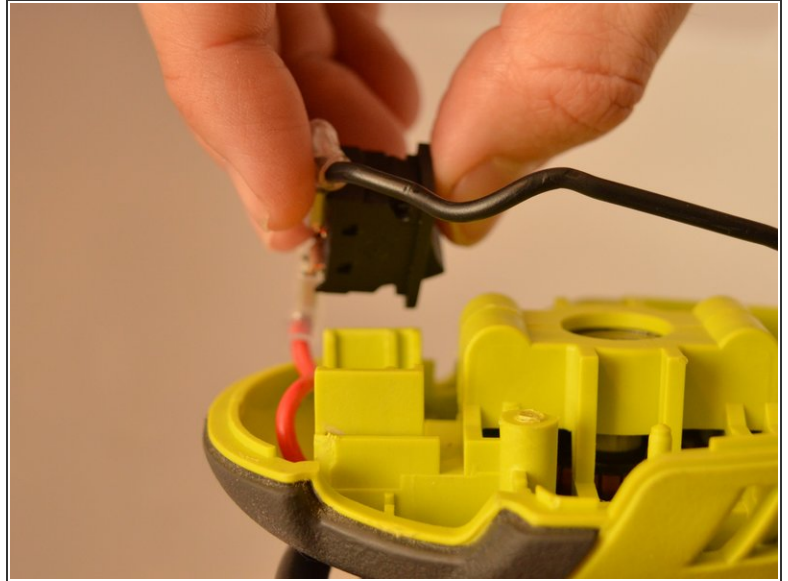
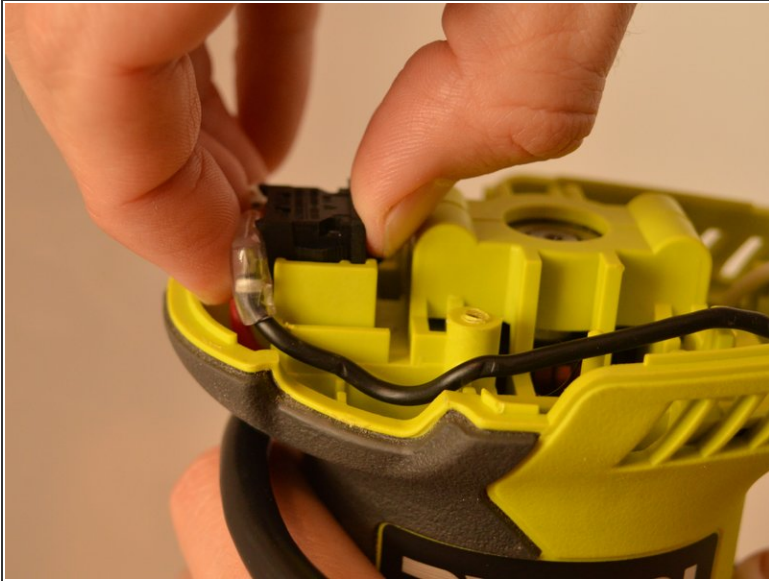
- Remove the two 16mm Phillips #2 screws from the inner housing assembly.

Step 6



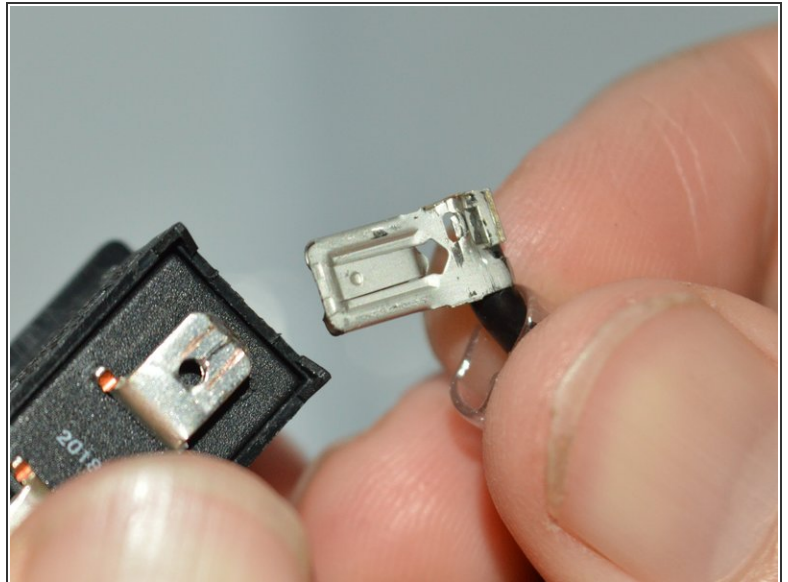
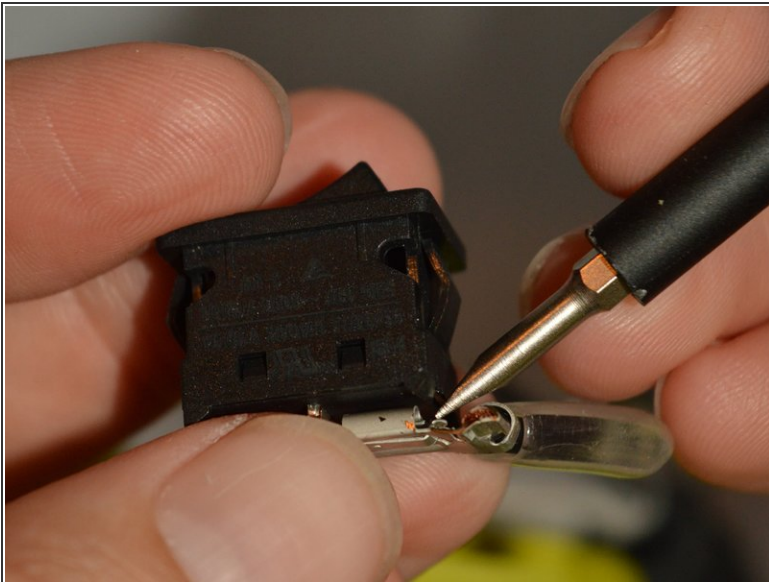
- Remove the two 14mm Phillips #2 screws from the cord clamp.

Step 7



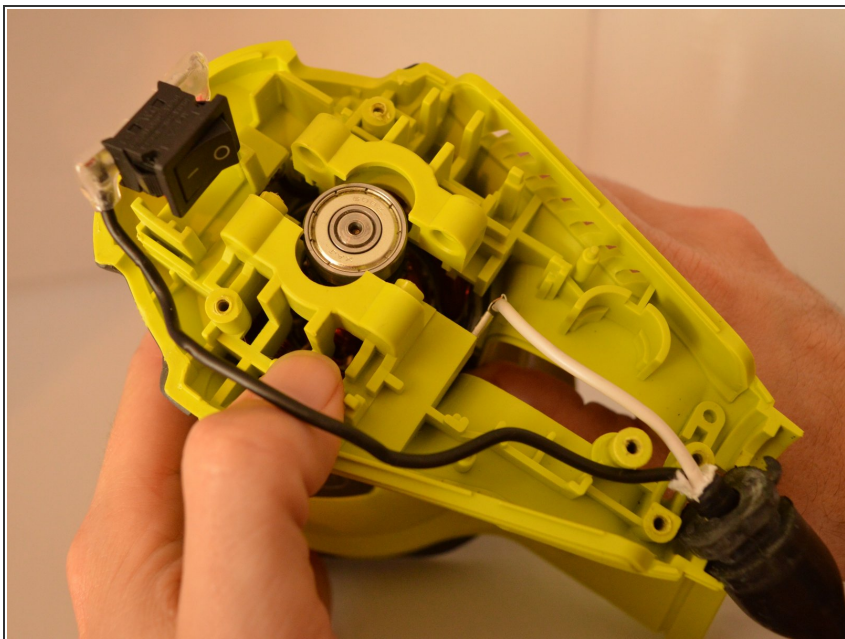
- Slide the power switch out of the housing assembly, carefully gripping the switch and pulling it upward.

Step 8



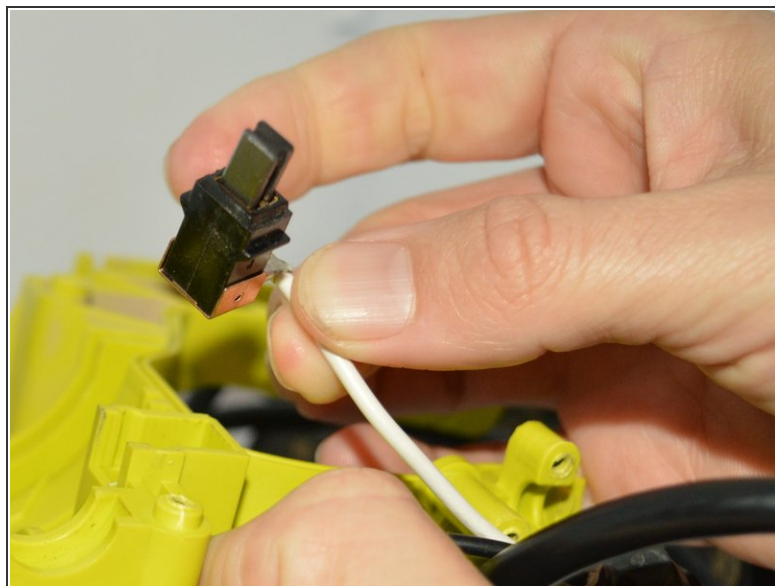
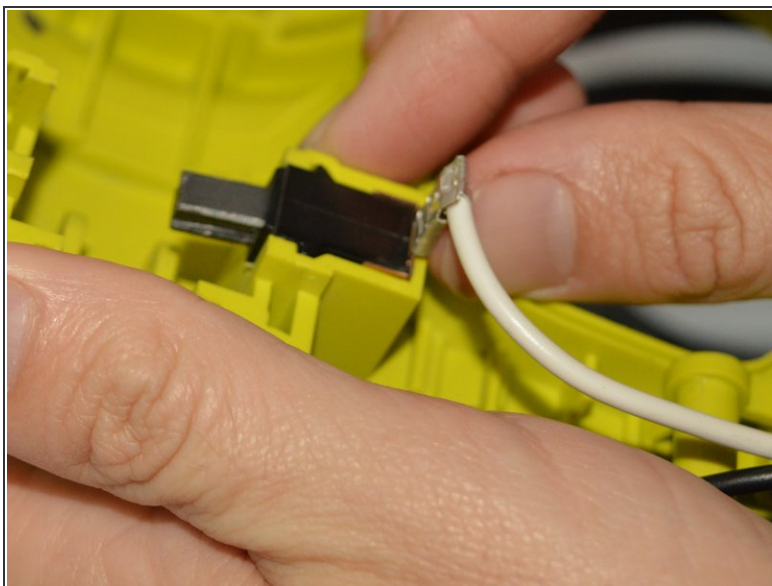
- Remove the black lead from the power switch using a spudger.

Step 9



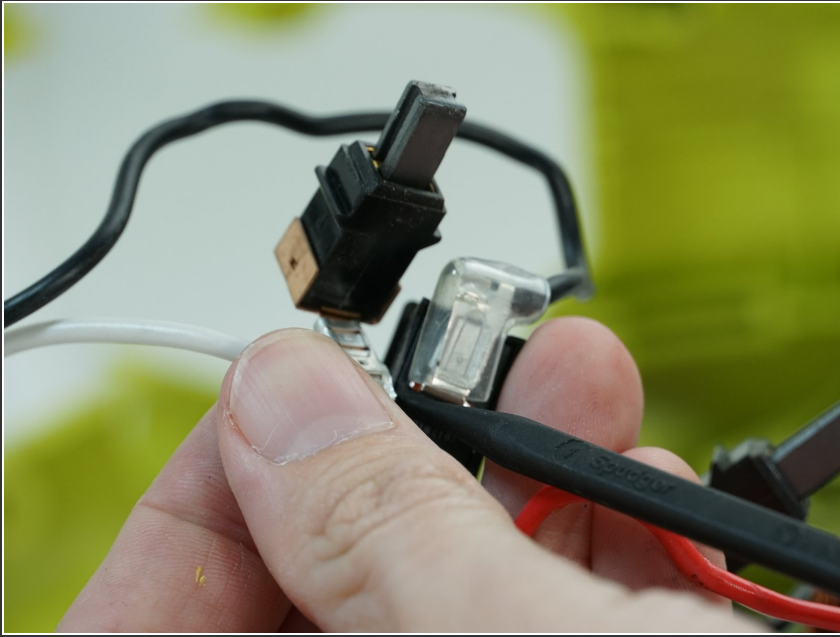
- Carefully slide the housing assembly apart, avoiding damage or pulling on wires.

Step 10



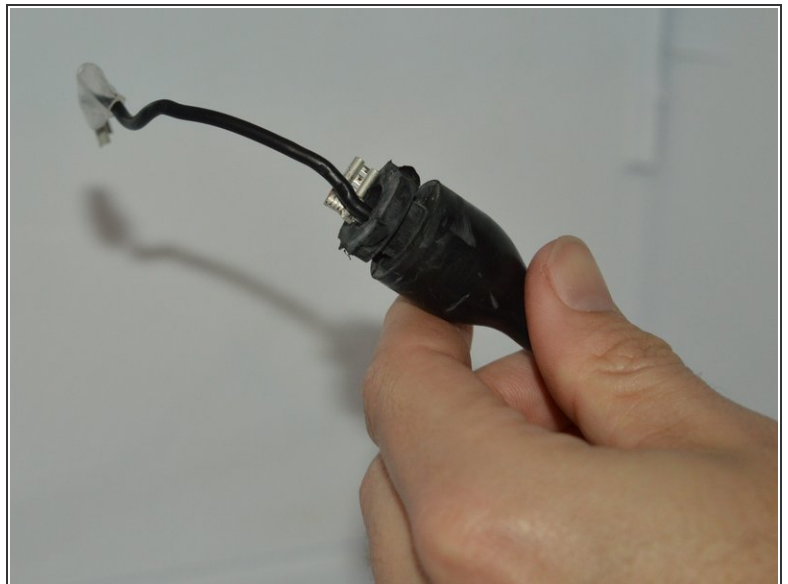
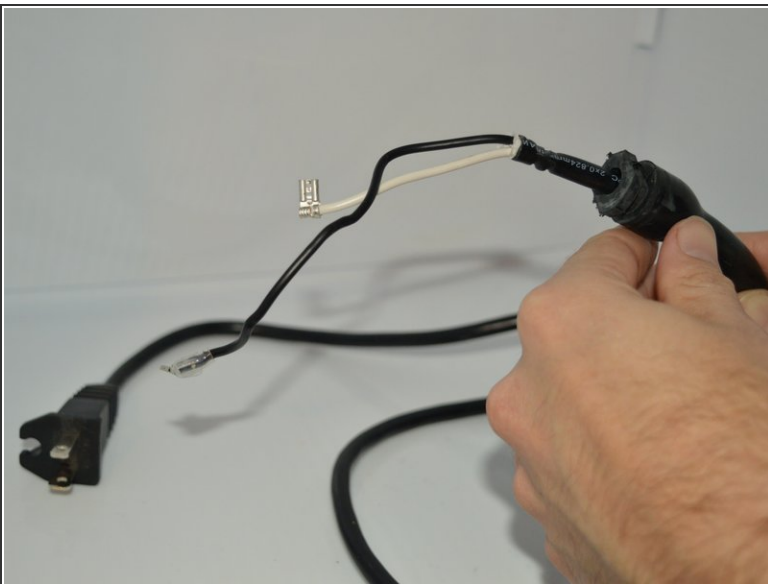
- Slide out the brush assembly with the white lead from the inner housing assembly.

Step 11



- Remove the white lead from the brush assembly.

Step 12



- Slide the bend relief off of the old power cord to reuse on the new power cord if there is no damage.

To reassemble your device, follow these instructions in reverse order. Make sure to perform an operational check after reassembling.