



# Ryobi RS290G Power Switch Replacement

This guide shows the steps of how to replace a Ryobi RS290G power switch.

Written By: Cameron Scott Williams



## INTRODUCTION

If your Ryobi RS290G is having power trouble this guide will show you how to successfully replace the power switch.



### TOOLS:

- [Phillips #2 Screwdriver](#) (1)



### PARTS:

- [Part Number: 030155001035](#) (1)

## Step 1 — Top Cap



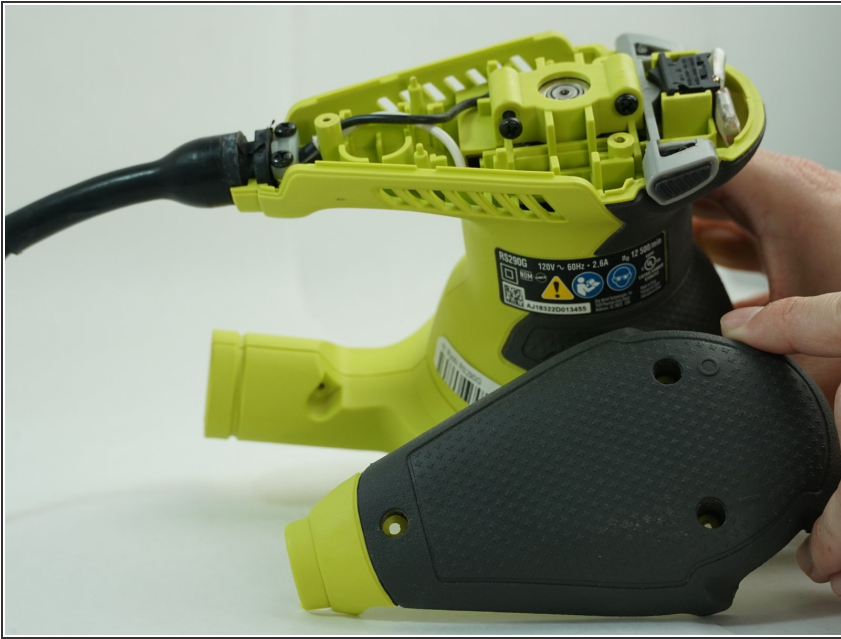
- Remove two 20mm and one 16mm Phillips #2 screws from the housing assembly and exhaust port.

## Step 2



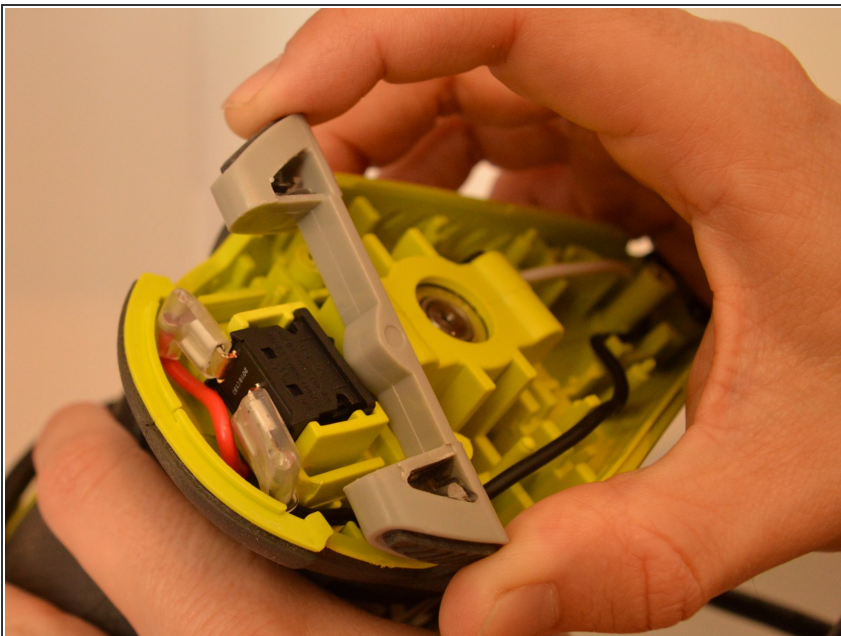
- Remove the three 16mm Phillips #2 screws from the top cap/upper grip.

### Step 3



- Remove the top cap.

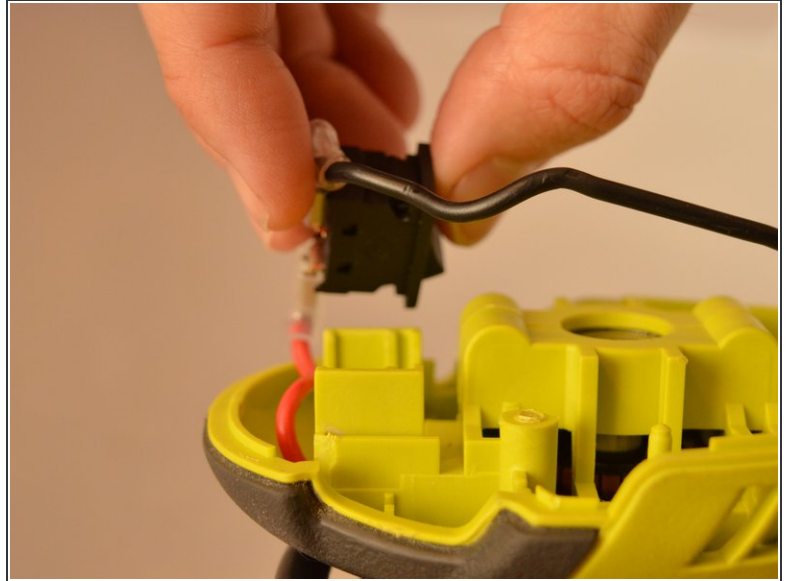
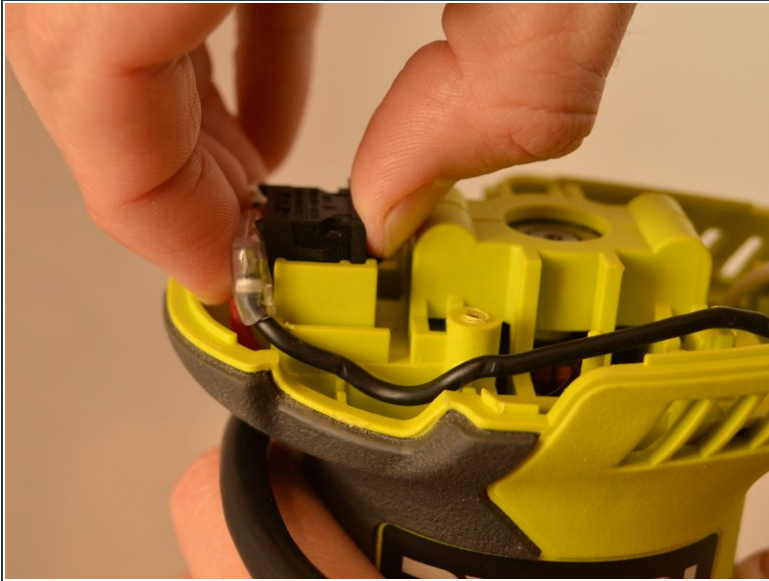
### Step 4 — Switch Trigger



- Remove the switch trigger.

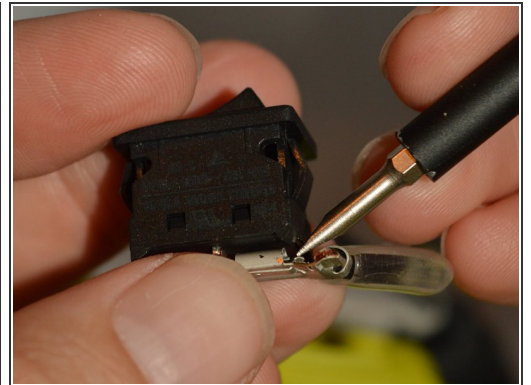
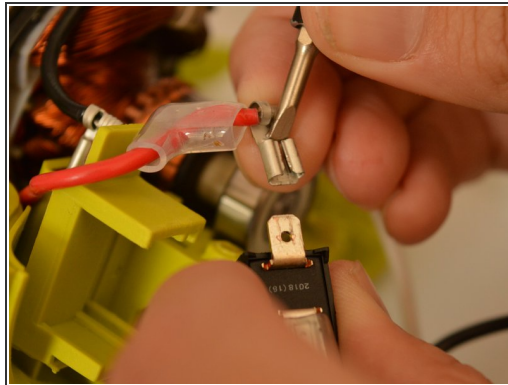
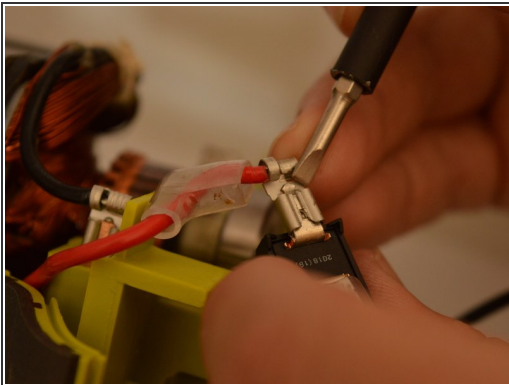


## Step 5 — Power Switch



- Slide the power switch out of the housing assembly by carefully gripping the power switch and sliding upward from the base.

## Step 6



- Slide the red and black leads from the power switch using a spudger.

To reassemble your device, follow these instructions in reverse order. After reassembling, perform an operational check before using.