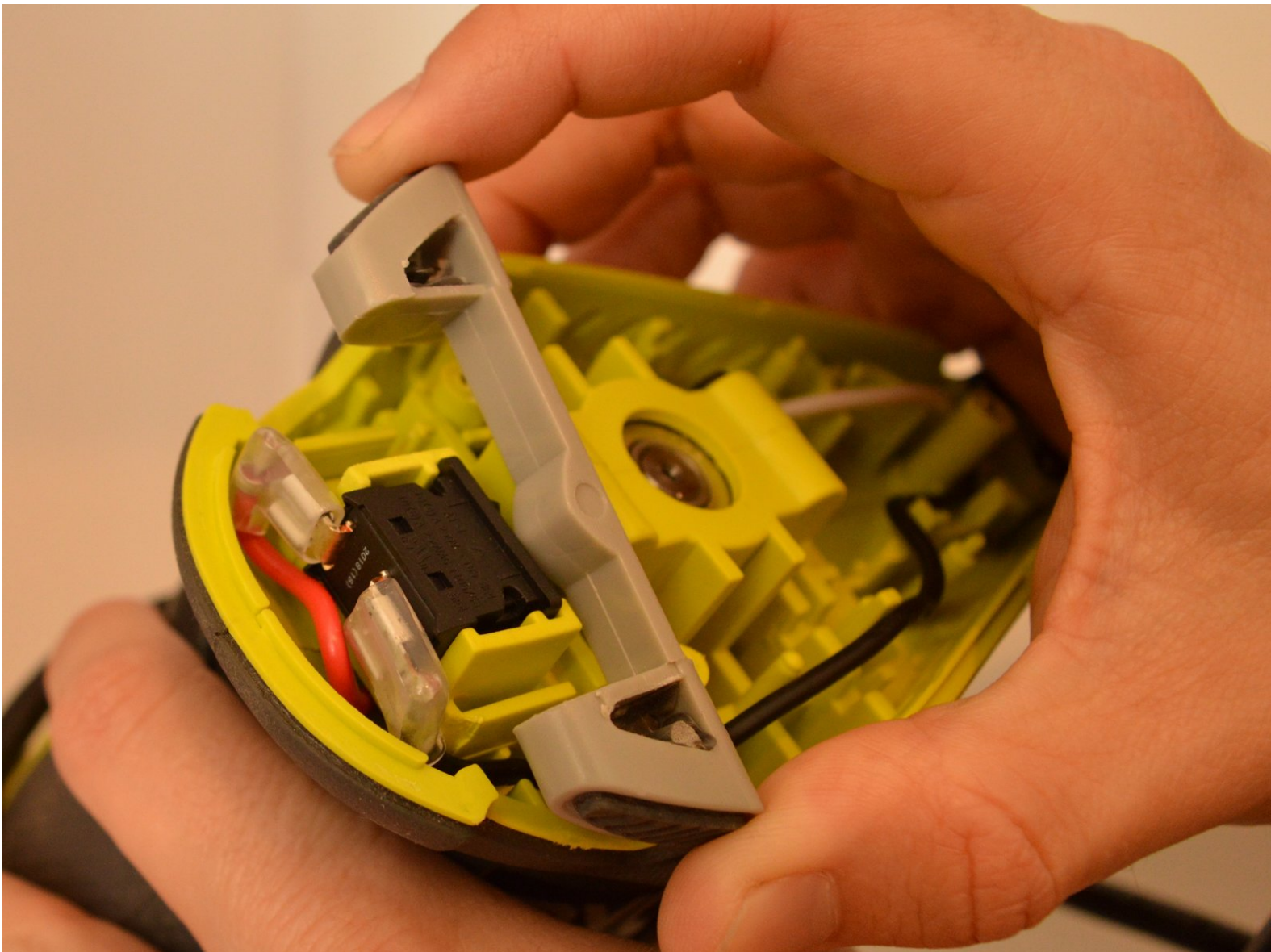




Ryobi RS290G Switch Trigger Replacement

How to replace a Ryobi RS290G switch trigger.

Written By: Kristen Gismondi





TOOLS:

- [Phillips #2 Screwdriver](#) (1)
-

Step 1 — Top Cap



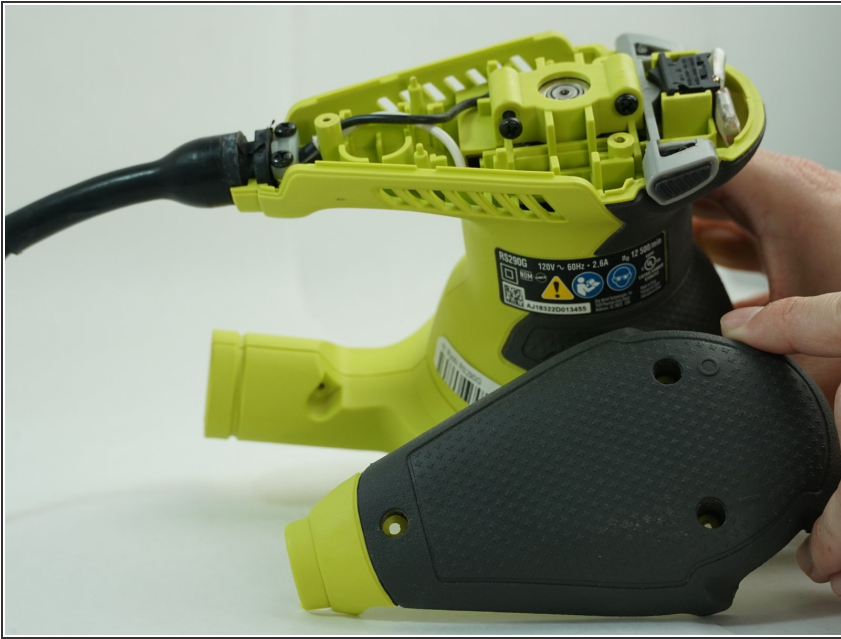
- Remove two 20mm and one 16mm Phillips #2 screws from the housing assembly and exhaust port.

Step 2



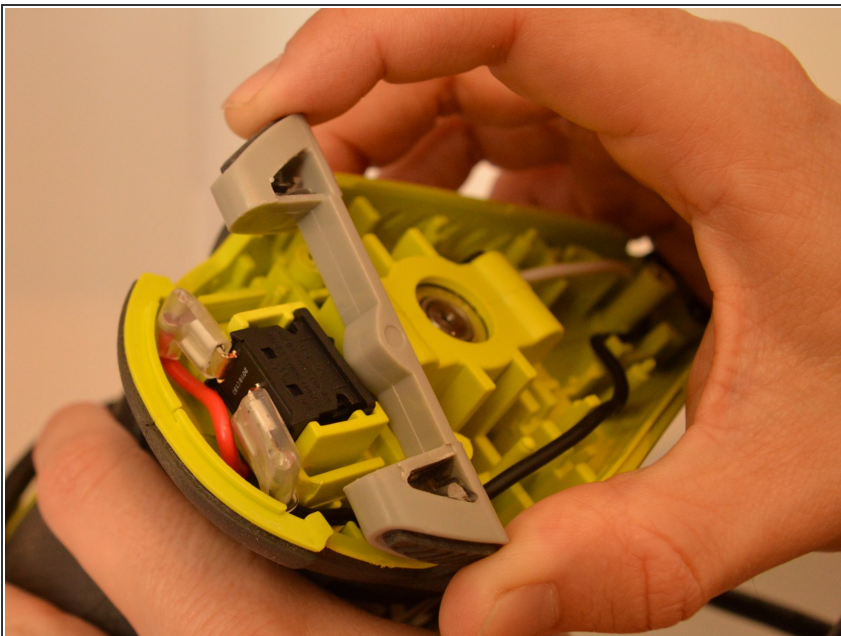
- Remove the three 16mm Phillips #2 screws from the top cap/upper grip.

Step 3



- Remove the top cap.

Step 4 — Switch Trigger



- Remove the switch trigger.

To reassemble your device, follow these instructions in reverse order.