



Ryobi RS290G Top Cap Replacement

How to replace a Ryobi RS290G top cap.

Written By: Kristen Gismondi



INTRODUCTION

If your Ryobi RS290G top cap is worn or broken, use this guide to replace the cap. This guide gives instructions on how to remove and replace the top cap. This top cap is used to gain control of the tool when sanding. If the top cap is worn or broken, you may experience reduced control.



TOOLS:

- [Phillips #2 Screwdriver](#) (1)

Step 1 — Top Cap



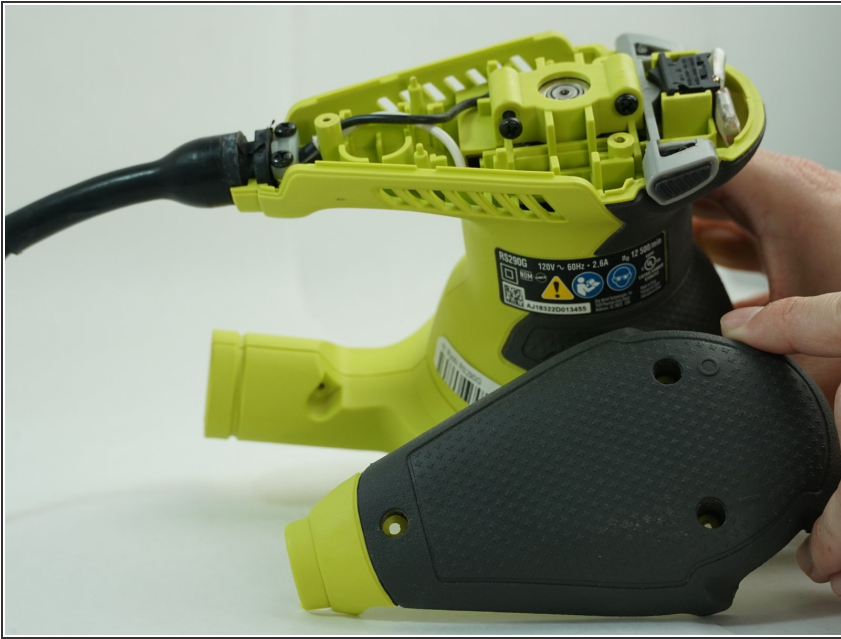
- Remove two 20mm and one 16mm Phillips #2 screws from the housing assembly and exhaust port.

Step 2



- Remove the three 16mm Phillips #2 screws from the top cap/upper grip.

Step 3



- Remove the top cap.

To reassemble your device, follow these instructions in reverse order.