



SELP1650 SELP 1650 Sony Lens Disassembly

Step by step guide for disassembling your Sony SELP1650 Lens

Written By: Sales Cameraparts4you



INTRODUCTION

Step by step guide for disassembling your SELP150 Sony Lens. Great for Jammed Lens repairs.



TOOLS:

- [Phillips PH000 Screwdriver](#) (1)

PH000

Small philips Screwdriver

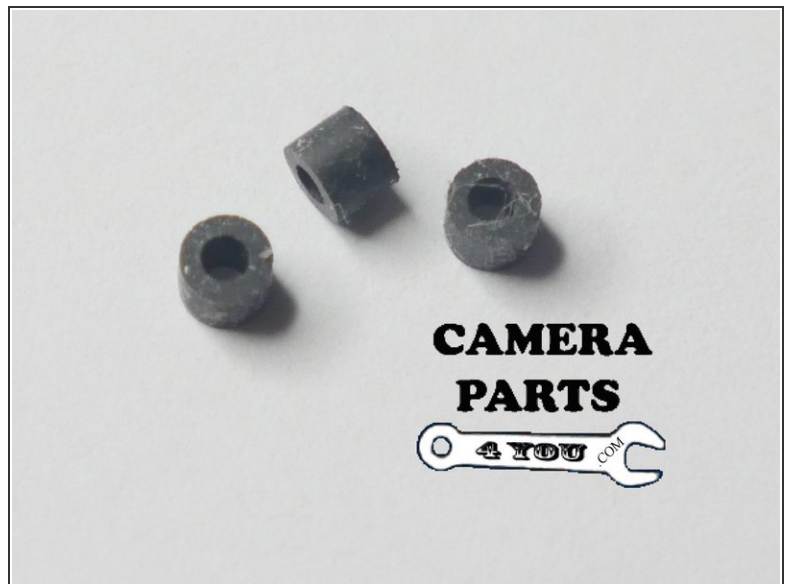
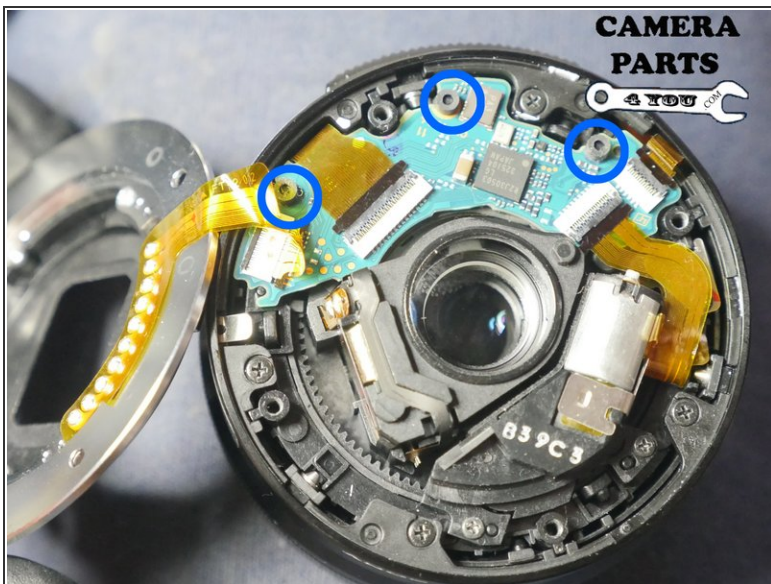
- [Spudger](#) (1)
 - [Latex or nitrile gloves](#) (1)
-

Step 1 — Remove External Screws



- Remove the 4 screws -(4 x 6mm)
- ❗ For reassembly make note of the gold contacts with respect to the serial number for proper positioning.

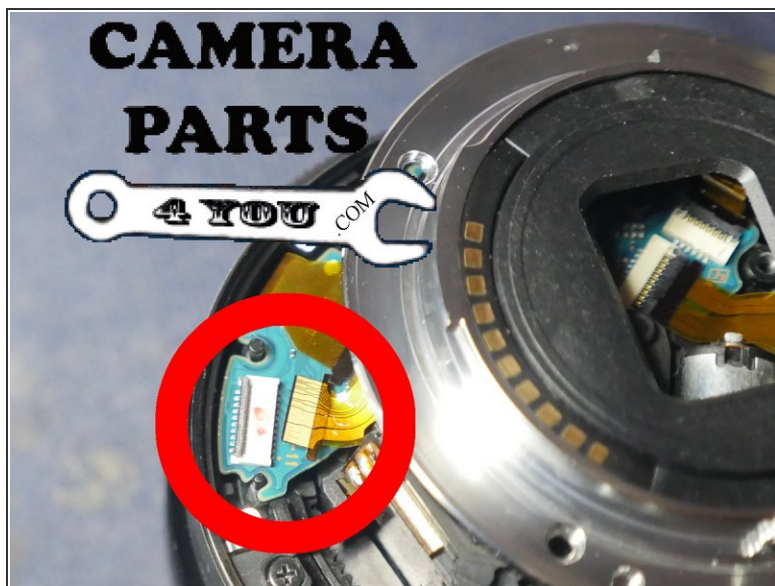
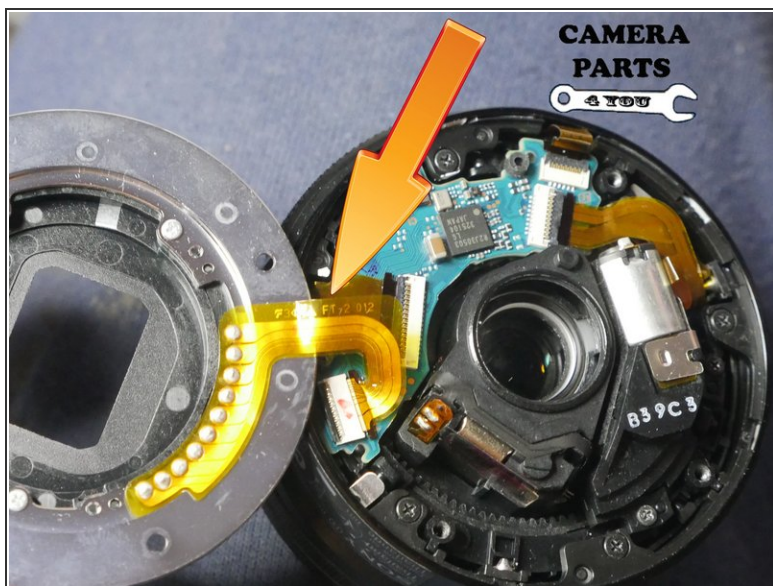
Step 2 — Remove Board Cushions



- Remove the 3 Board Cushions

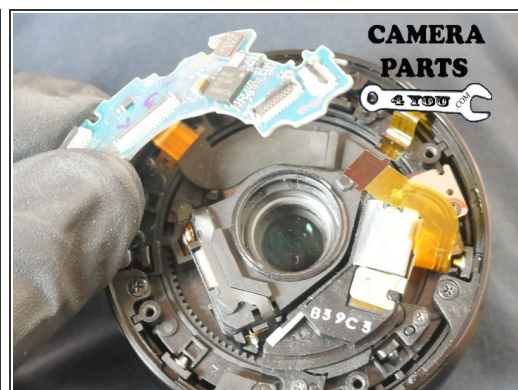
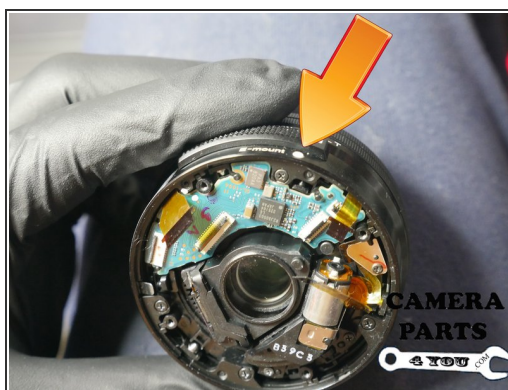
⚠ These can get lost easily and is why we remove these first. Place these in a small plastic bag or in a safe secure location. Be careful with ESD. Static Discharge can short your board.

Step 3 — Remove Rear Contact Ring



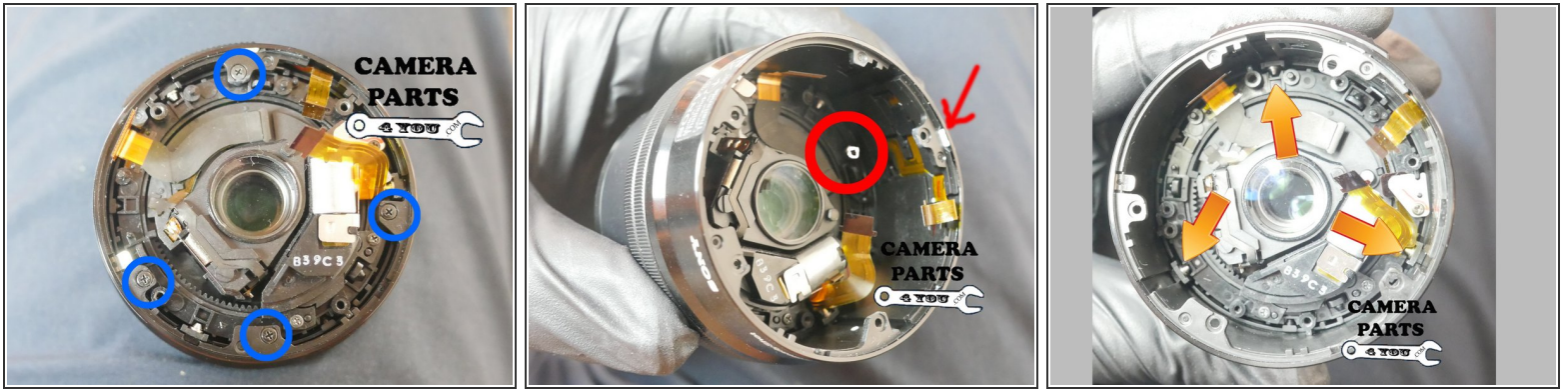
- Notice positioning
 - Use spudger or other method to release ziff clamp and remove flex cable.
- (i) Note: Gold Fingers facing up for reassembly notes. Ziff clamps break easily so be careful.

Step 4 — Remove Main PCB



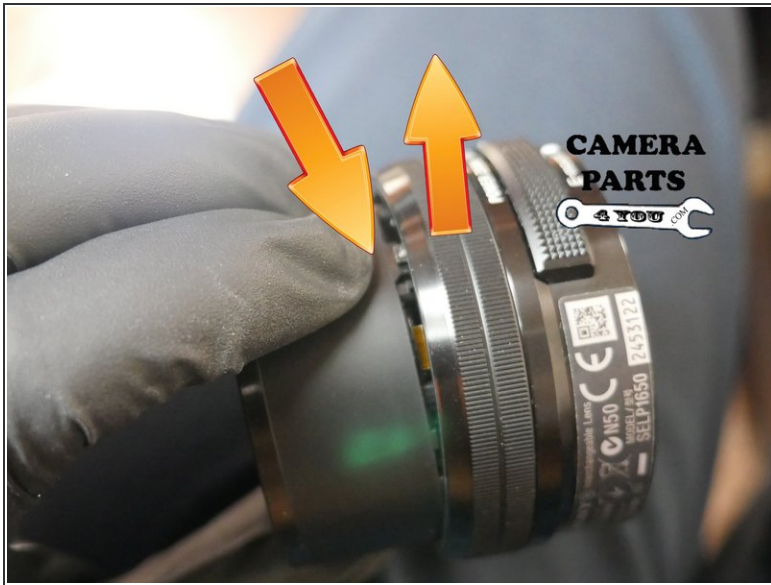
- Open the 3 Ziff clamps carefully and remove the Flex Cables.
- Notice White Mount Dot and Main PCB Orientation to help with re-assembly

Step 5 — Removing the focus ring Step 1



- Remove 4 - 4mm screws. Once removed the barrel will release and extend.
- Make a marking (i used white) to align with the White marking on the Focus ring to make re-assembly easier
- Notice the 3 Grooves. These are the slide grooves where the barrel moves up and down. You will need to release the pins from the grooves at each point - one by one by using pressure.

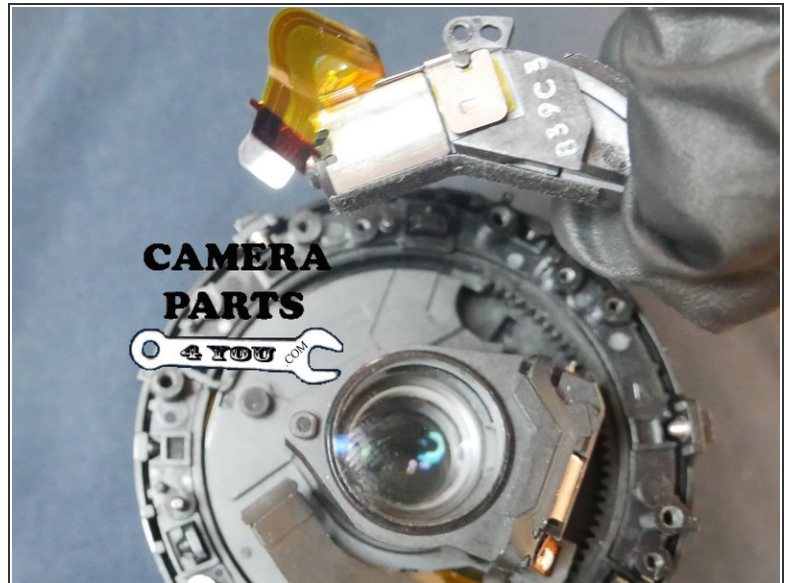
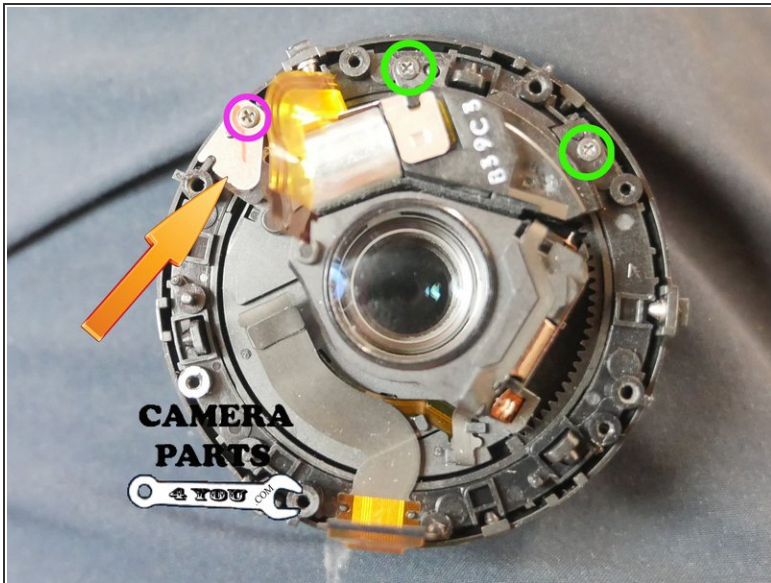
Step 6 — Remove focus ring Step #2



- Apply pressure out the outer tip near pin pushing in slightly and gently release the pin from the barrel. Do this on all three locations where the pins are located.

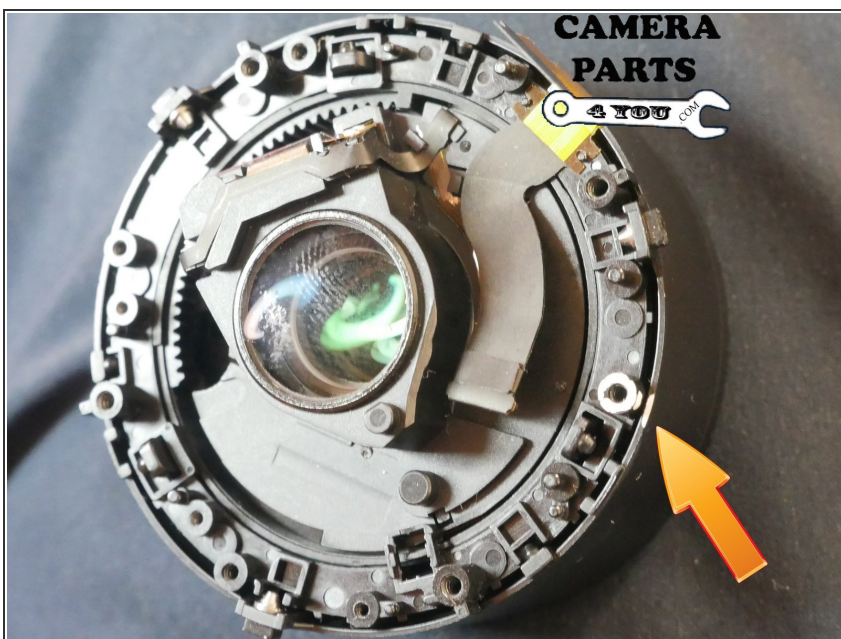
⚠ I have seen people push the focus ring outward to release the pins... which works but you need to be careful because the focus ring is fragile and it can bend easy. If you bend the focus ring then you will have a lens that jams.

Step 7 — Remove Lens Motor



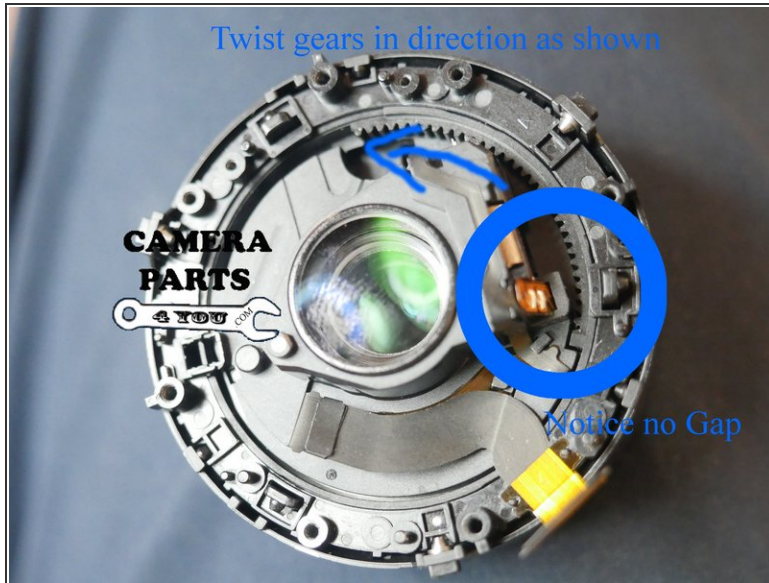
- Remove 2 screws 2 x 4mm (black screws with a tight thread)
- Remove 1 screw 1 x 3mm
- Remove metal plate (see arrow)... review orientation before removing.

Step 8



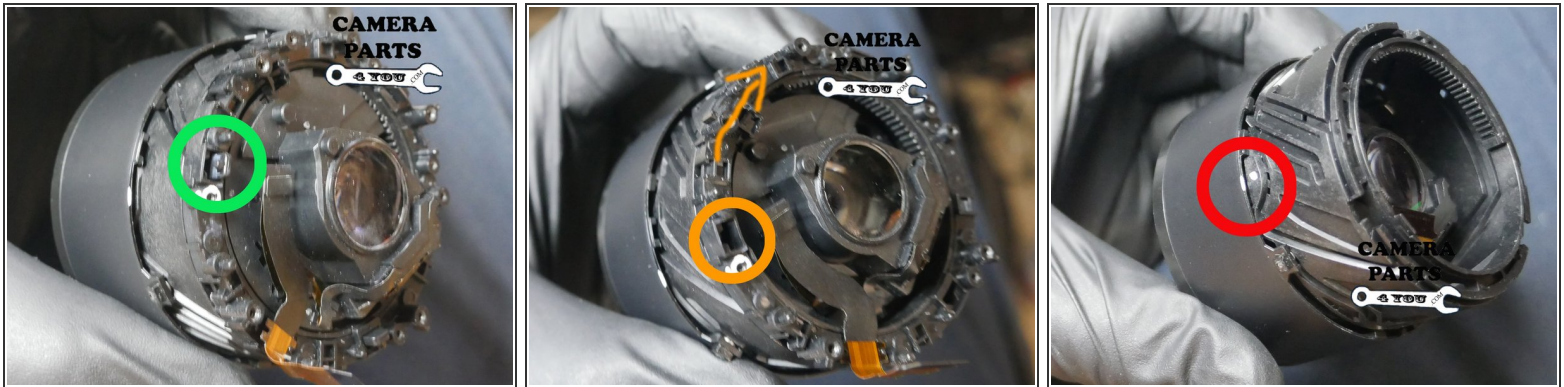
- Next to your previous mark make a mark on the outer barrel to help with re-assembly.. That mark will line up with 0.25m lettering on the front barrel

Step 9



- Ok so here is how to remove the inner barrel. Twist the gear teeth in the direction of the arrow as far as it will go until you get a gap similar to picture #2
- Shows already in twisted position. Now just pull up on the middle barrel (glass housing) until the lens mechanism starts to twist.

Step 10



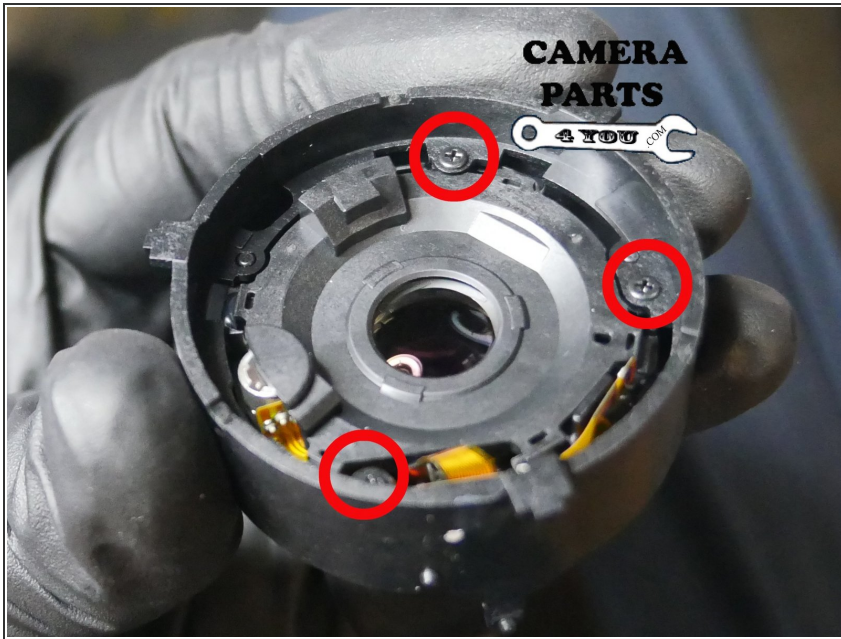
- Pull up on inner part (glass housing). The barrel will begin to twist. Notice Extended notch. Twist until the Notch descends. Stop when notch descends.
- Picture shows notch has descended. Now you can twist rear part until it releases and remove it. Be careful in removing. Make sure it removes freely. There are tabs that can break off if forced.
- Twist until inner barrel releases and drops from groove. Mark the point where barrel releases and remove groove tube.

Step 11



- Remove groove tub
- Mark as shown to line up with previous marks. Remove aperture tube from front glass tube
- Release Flex Cable

Step 12



- Remove 3 Screws 3 x 3mm
- Remove aperture

Step 13 — Reassembly Notes



- For reassembly just re-assemble the aperture unit then attach the groove tube as shown
- There are two groove notches as shown in the photo. Slide the 2 notches into the 2 grooves exactly as shown.. push in until they twist into the groove.
- Line up groove and attach the front tube. Use the marks you made to line everything up and reverse the disassembly to finish assembly. If you need help you can always drop us an email.

To reassemble your device, follow these instructions in reverse order.