



# SHARP spc800 alarm clock Teardown

A teardown of the SHARP SPC800 Alarm Clock

Written By: Travis Magro



# INTRODUCTION

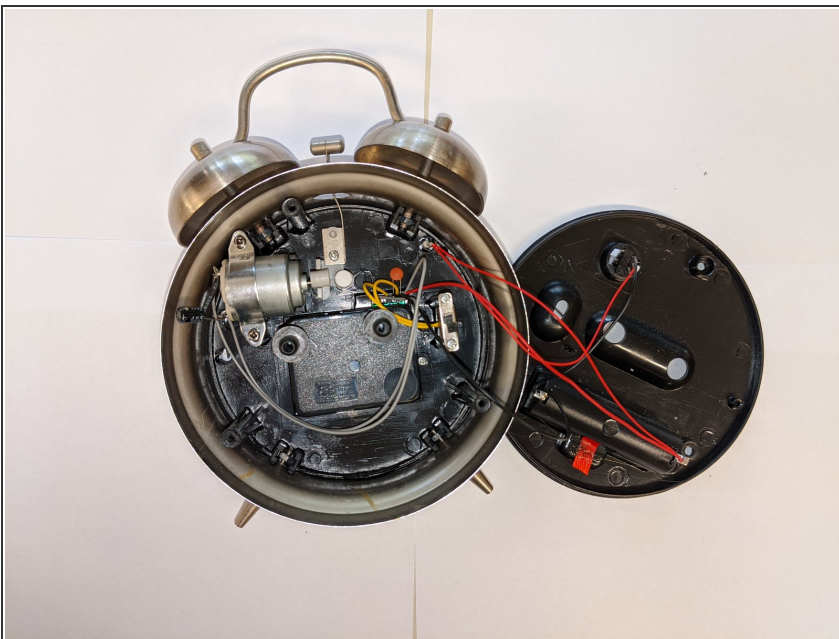
This guide is a general teardown of a SHARP alarm clock. While individual subsystems are not disassembled, you will be able to see how each subsystem works together to make the clock function.

## Step 1 — Whole Alarm Clock



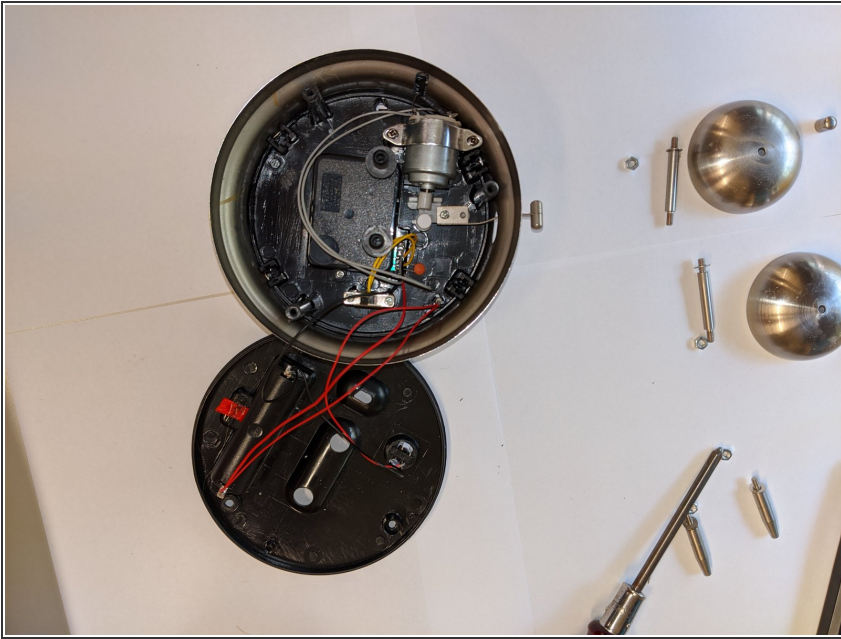
- This is what the alarm clock looks like before any components are removed.

## Step 2 — Remove back of housing



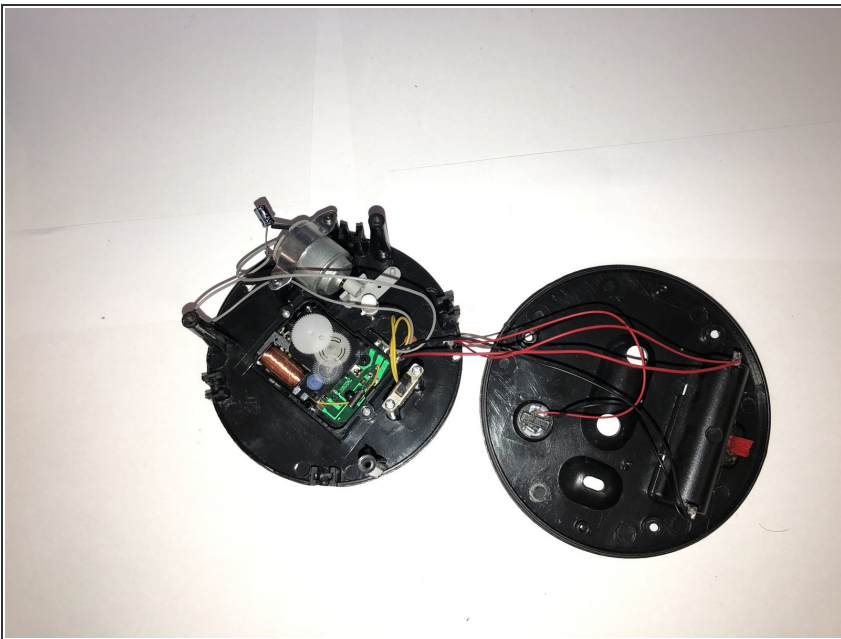
- Remove the back from the clock, exposing the internals.
- Remove the AA battery before attempting this teardown

### Step 3 — Remove bells and legs



- Remove the bells and legs with a screwdriver. This prevents the clock from ringing and from standing up on its own.

### Step 4 — Remove gear cover

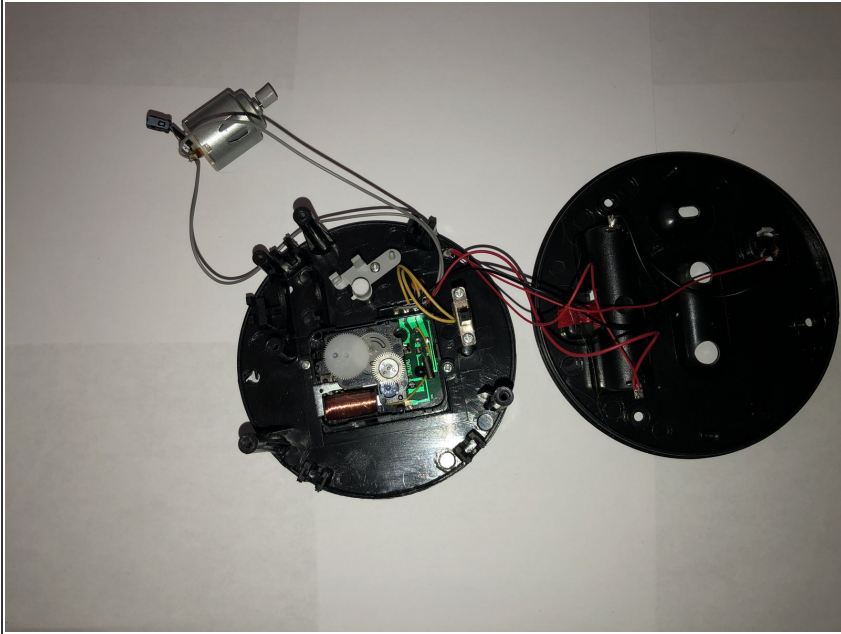


- Use a screwdriver to lever the plastic tabs holding the plastic cover in place. This exposes the gears in



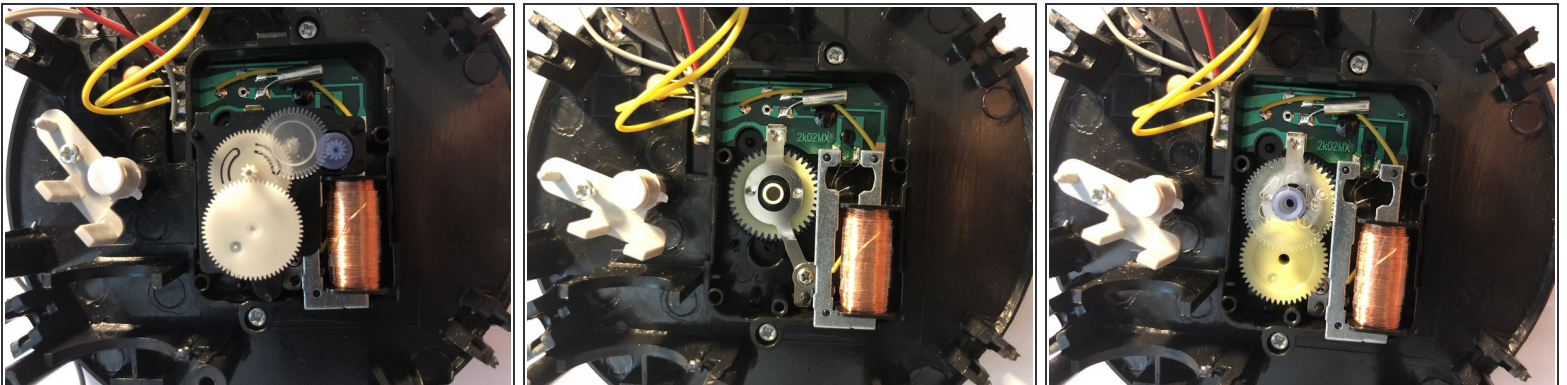
charge of turning the clock hands and the alarm.

## Step 5 — Remove motor



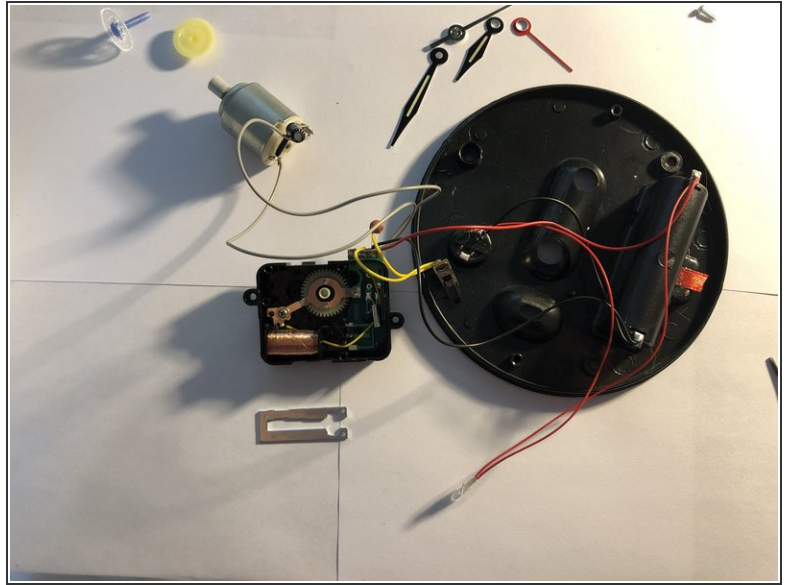
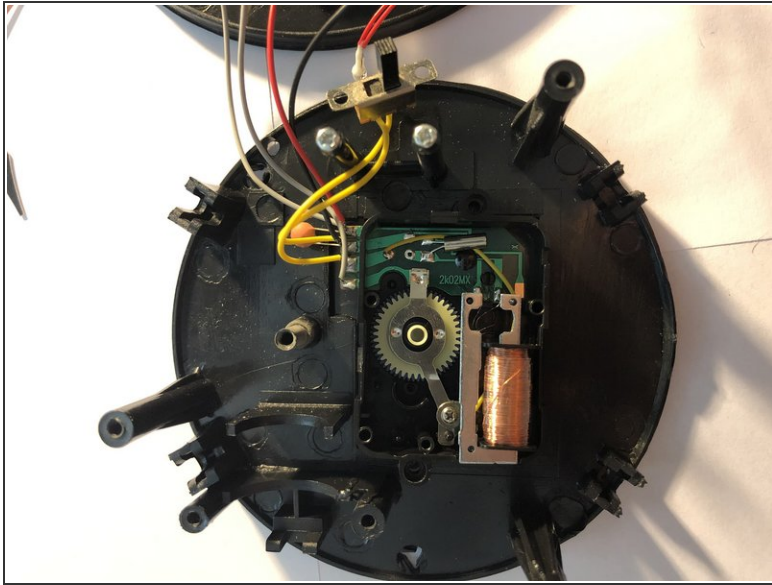
- Unscrew the metal strap holding the motor on

## Step 6 — Remove the gears



- You will need to pull off the clock hands as well, in order to remove all of the gears

## Step 7 — Remove miscellaneous parts



- Remove the switch by unscrewing it
- Remove the LED by pushing it through the clock face
- Remove the gear/circuit box from the clock face by unscrewing it

To reassemble your device, follow these instructions in reverse order.