



SIM Card Replacement

Replace the SIM card of a Samsung Galaxy Express 3. The SIM cards used in this Express 3 are for AT&T GoPhone plans.

Written By: Adrian Eaton



INTRODUCTION

Life happens, and sometimes you need a temporary go-phone to keep your power moves powerful. The Samsung Galaxy Express 3 is a perfect such phone for those who find themselves between cracked screens more than they'd care to admit.

Learn how to replace the SIM card to properly activate and use your new second-string, but smart nonetheless, phone.



TOOLS:

- [Tweezers](#) (1)
-

Step 1 — Battery



- Place the phone face-down on the table.
- Remove the back cover by lifting up on the groove in the upper-left corner of the phone.

Step 2 — Back Cover



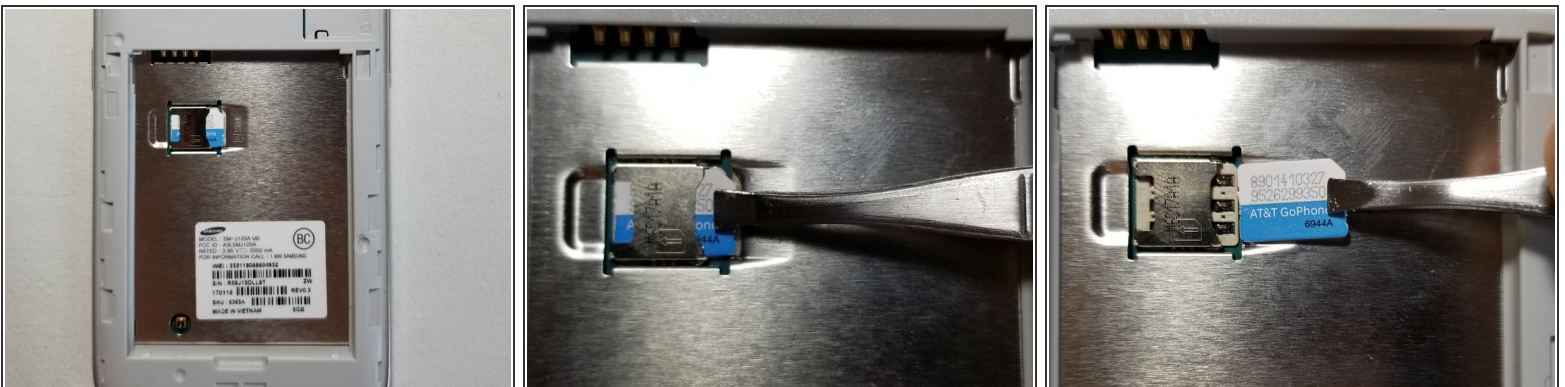
- Run your fingers along the perimeter of the phone to pop up a corner of the back cover.
- Peel slowly to fully remove the back cover.

Step 3



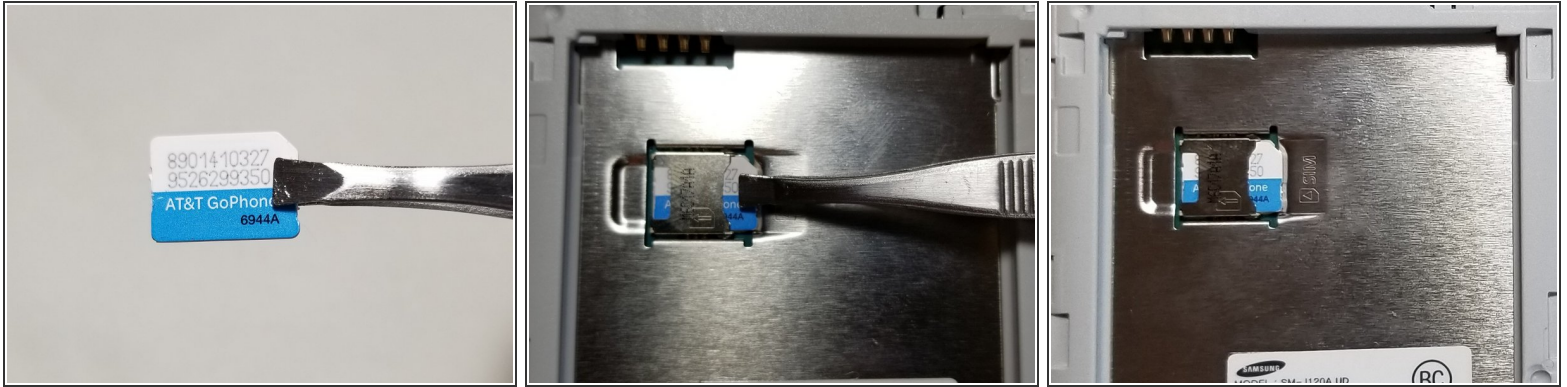
- Press on the bottom of the battery and lift the battery up and out of the phone.

Step 4 — SIM Card



- Locate the sim card in the upper left corner of the battery bracket.
- Slide the SIM card out to the right by pinching it with either fingers or tweezers.

Step 5



- Insert the new SIM card into the slot, ensuring the tabbed corner is on the upper right-hand side.

To reassemble your device, follow these instructions in reverse order.