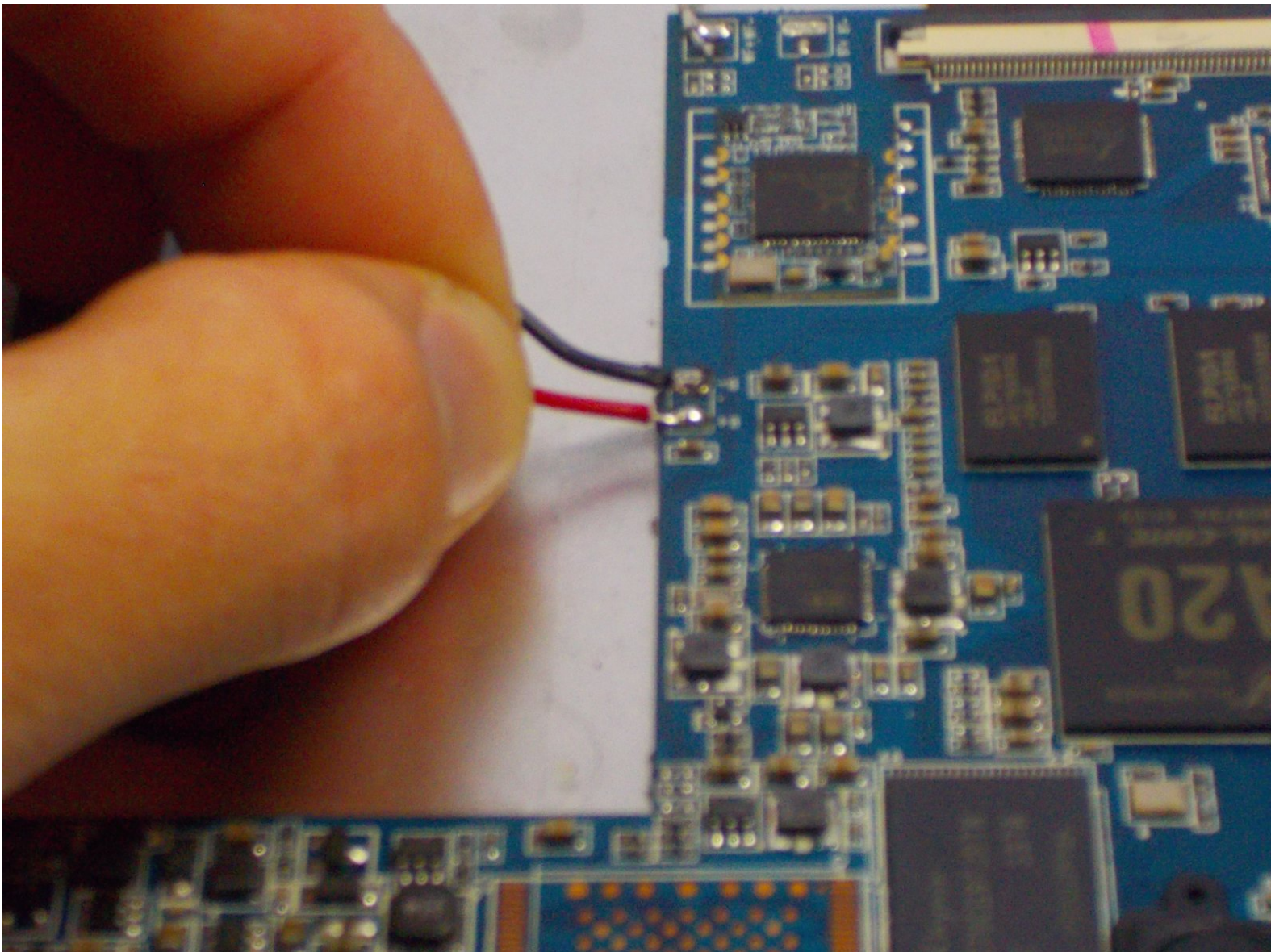




# SKYTEX SP1020 Battery Replacement

You will remove your battery

Written By: Anthony Vitali



---

# INTRODUCTION

This guide will walk you through replacing your battery.



## TOOLS:

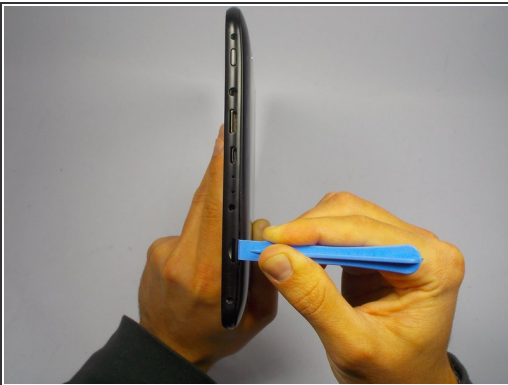
- [iFixit Opening Tools](#) (1)
  - [Soldering Iron](#) (1)
-

## Step 1 — Rear Case



- Prior to any repairs make sure that you are familiar with the device as well as the location of its buttons and ports.
- ⓘ Turn off device prior to continuing to further steps.

## Step 2

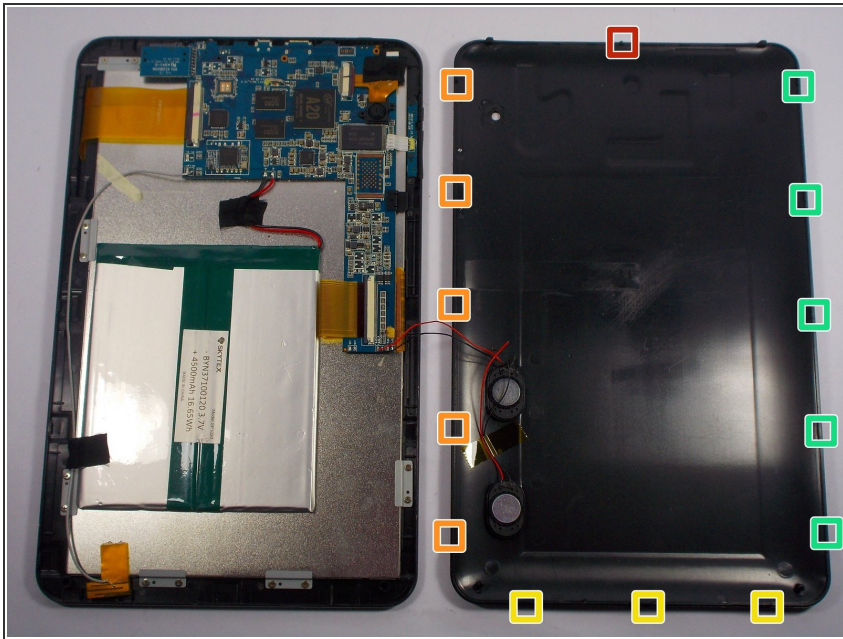


- ⓘ Set the tablet back panel facing down, with the SKYTEX logo facing you. You will find that this step will start from the right side of the device.
- Insert the plastic opening tool between the bottom seam of the back panel and the micro SD port. The tool's edge should point toward the rear panel to prevent any scratching or damage.
- Follow up with the plastic opening tool, releasing the clips as you go all the way around the device.

This document was generated on 2019-09-22 07:49:37 PM (MST).

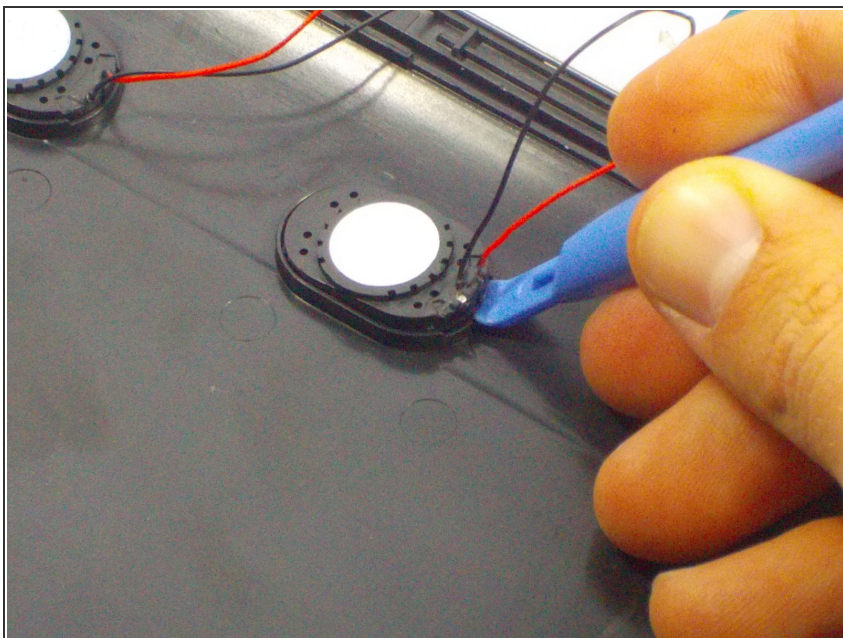


## Step 3



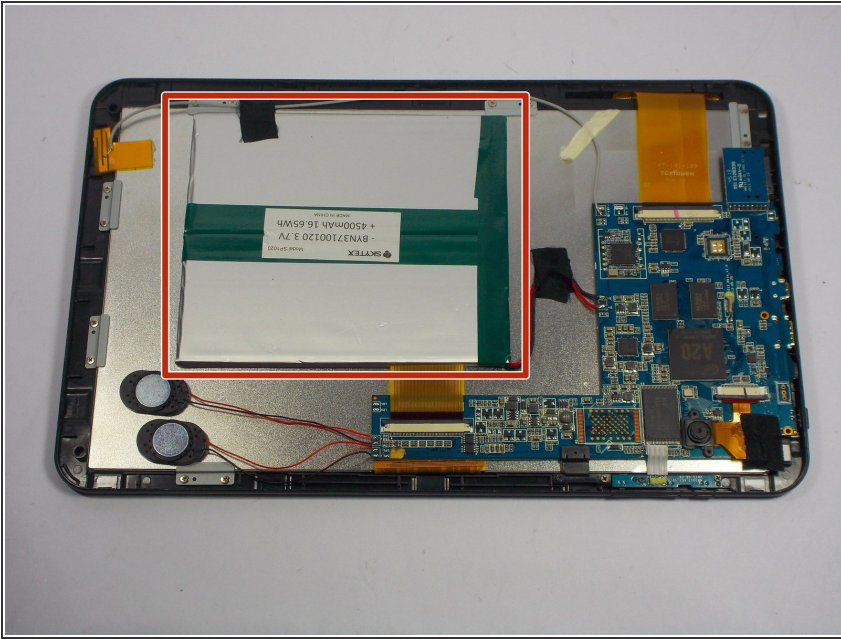
- The clips will be released in the order specified as the spudger tool is moved along the seam around the device.

## Step 4



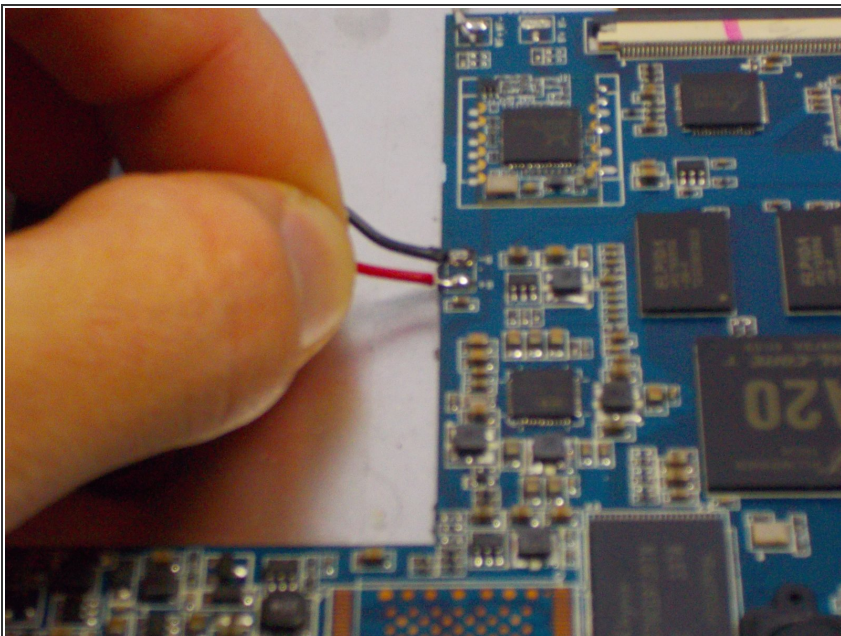
- Use a plastic opening tool to pry the speakers out of the rear case.
- The rear case will now be free from the rest of the device.

## Step 5 — Battery



- Locate the battery.

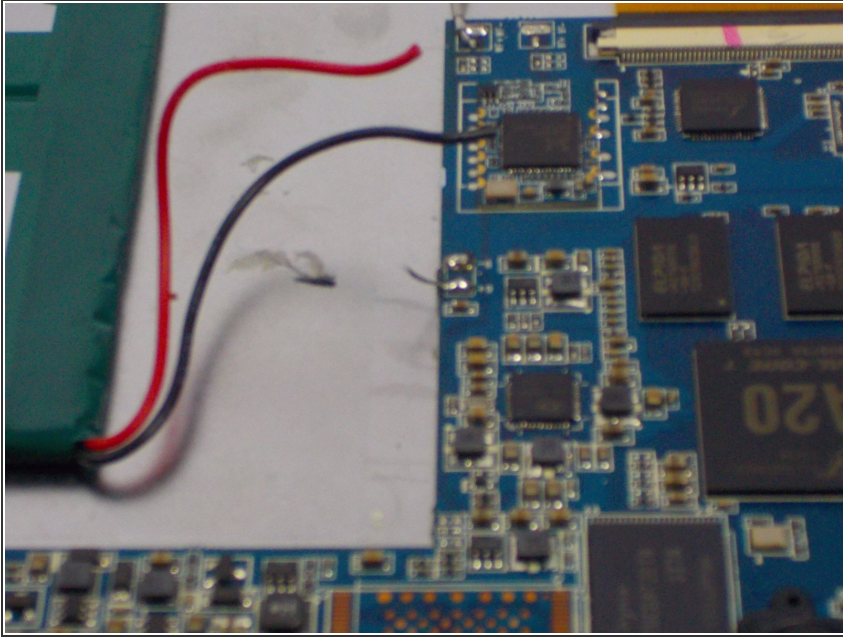
## Step 6



- Use a soldering iron and desoldering braid to desolder the red and black motherboard battery connections.



## Step 7



- Gently lift the battery up and out of the device.

To reassemble your device, follow these instructions in reverse order.